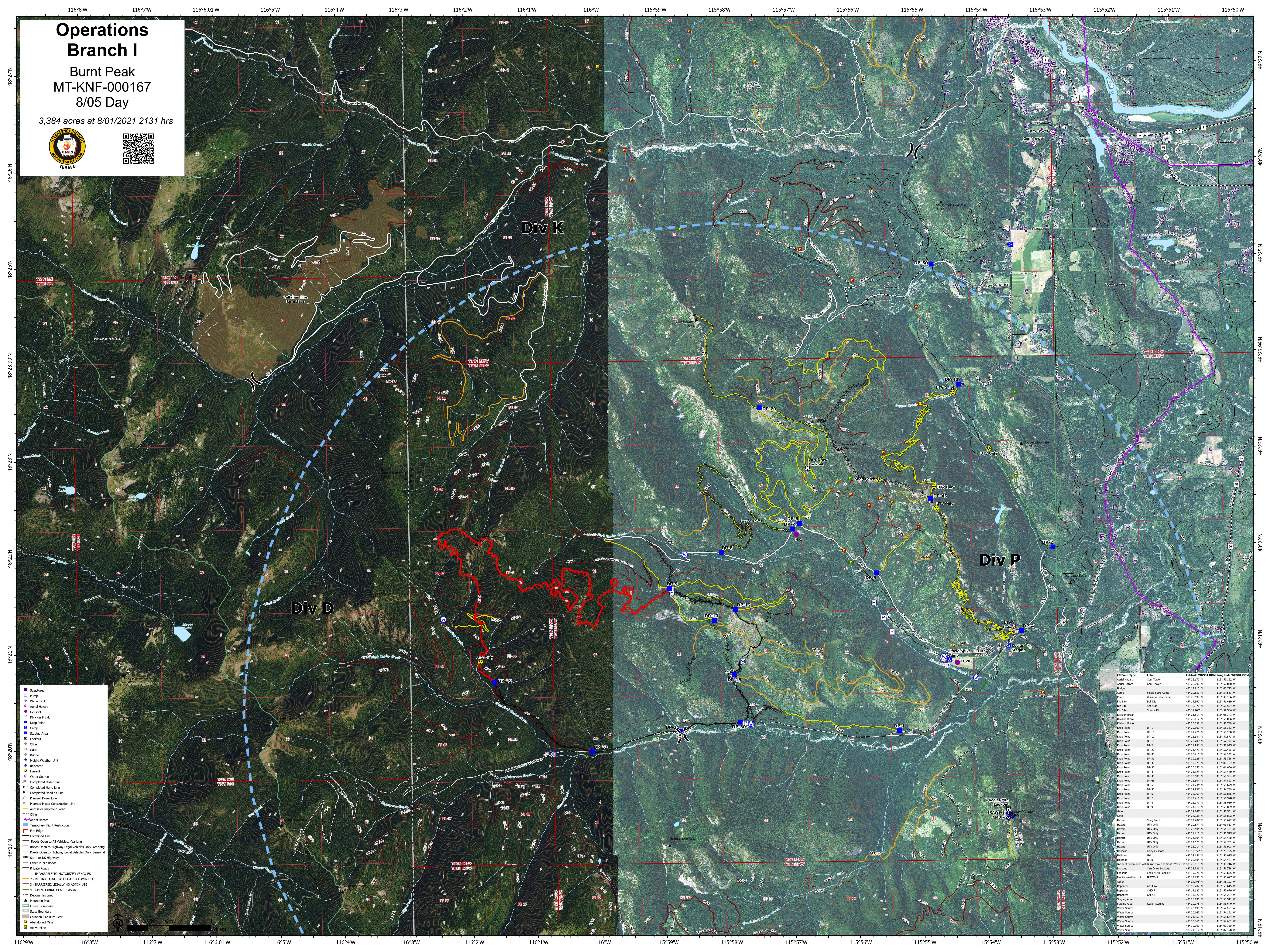


Operations Branch I

Burnt Peak
MT-KNF-000167
8/05 Day

3,384 acres at 8/01/2021 2131 hrs



- Structures
- Pump
- Water Tank
- Aerial Hazard
- Helipoint
- Division Break
- Drop Point
- Camp
- Staging Area
- Lookout
- Other
- Gate
- Bridge
- Mobile Weather Unit
- Repeater
- Hazard
- Water Source
- Completed Doser Line
- Completed Hand Line
- H - Completed Road as Line
- R - Completed Road as Line
- Planned Doser Line
- Planned Hand Construction Line
- Access or Improved Road
- Other
- Aerial Hazard
- Temporary Flight Restriction
- Fire Edge
- Contained Line
- Roads Open to All Vehicles, Yearling
- Roads Open to Highway Legal Vehicles Only, Yearling
- Roads Open to Highway Legal Vehicles Only, Seasonal
- State or US Highway
- Other Public Roads
- Private Roads
- 1 - IMPOSSIBLE TO MOTORIZED VEHICLES
- 2 - RESTRICTED/LEGALLY GATED ADMIN USE
- 3 - BARRIERED/LEGALLY NO ADMIN USE
- 4 - OPEN DURING BEAR SEASON
- Decommissioned
- Mountain Peak
- Forest Boundary
- State Boundary
- Cullahan Fire Burn Scar
- Abandoned Mine
- Active Mine

FC Point Type	Label	Latitude	Longitude	Length	Width	DOH
Aerial Hazard	Com Tower	48°26.170' N	115°53.132' W			
Aerial Hazard	Com Tower	48°26.290' N	115°52.840' W			
Aerial Hazard	Com Tower	48°26.810' N	115°50.620' W			
Camp	Field Spike Camp	48°26.813' N	115°54.561' W			
Camp	Wilderness Base Camp	48°25.499' N	115°49.130' W			
Dip Site	Ball Dip	48°25.860' N	115°51.819' W			
Dip Site	Spur Dip	48°25.970' N	115°56.574' W			
Dip Site	Spur Dip	48°25.960' N	115°56.584' W			
Dip Site	Spur Dip	48°23.814' N	115°05.941' W			
Division Break	Division Break	48°26.112' N	115°55.000' W			
Drop Point	DP-1	48°26.102' N	115°55.353' W			
Drop Point	DP-10	48°25.127' N	115°58.300' W			
Drop Point	DP-12	48°25.289' N	115°57.872' W			
Drop Point	DP-15	48°26.706' N	115°57.608' W			
Drop Point	DP-2	48°25.186' N	115°52.327' W			
Drop Point	DP-20	48°25.472' N	115°57.466' W			
Drop Point	DP-30	48°26.214' N	115°57.823' W			
Drop Point	DP-31	48°26.128' N	115°58.728' W			
Drop Point	DP-33	48°26.829' N	115°00.127' W			
Drop Point	DP-35	48°25.637' N	115°58.214' W			
Drop Point	DP-4	48°26.124' N	115°53.430' W			
Drop Point	DP-40	48°26.889' N	115°54.564' W			
Drop Point	DP-45	48°26.506' N	115°54.532' W			
Drop Point	DP-5	48°26.744' N	115°55.239' W			
Drop Point	DP-50	48°26.588' N	115°54.760' W			
Drop Point	DP-6	48°26.868' N	115°56.867' W			
Drop Point	DP-7	48°26.213' N	115°56.978' W			
Drop Point	DP-8	48°25.107' N	115°56.987' W			
Drop Point	DP-9	48°25.610' N	115°58.899' W			
Gate	Gate	48°26.767' N	115°52.331' W			
Hazard	Hazard	48°26.726' N	115°55.827' W			
Hazard	UTV Only	48°26.707' N	115°55.822' W			
Hazard	UTV Only	48°26.874' N	115°58.850' W			
Hazard	UTV Only	48°26.404' N	115°54.731' W			
Hazard	UTV Only	48°26.112' N	115°53.993' W			
Hazard	UTV Only	48°26.864' N	115°54.940' W			
Hazard	UTV Only	48°26.620' N	115°54.762' W			
Hazard	UTV Only	48°26.074' N	115°53.803' W			
Hazard	Light Helibase	48°26.099' N	115°59.827' W			
Helibase	Helibase	48°26.156' N	115°56.513' W			
Helibase	Helibase	48°26.107' N	115°56.987' W			
Incident Command Post	Incident Command Post Burnt Peak and South Yank ICP	48°25.610' N	115°49.216' W			
Lookout	Com Tower	48°26.836' N	115°56.728' W			
Lookout	Keeler Mt. Lookout	48°26.276' N	115°53.817' W			
Lookout	Keeler Mt. Lookout	48°26.276' N	115°53.817' W			
Mobile Weather Unit	DRWS-9	48°26.793' N	115°53.222' W			
Repeater	Repeater	48°26.189' N	115°53.677' W			
Repeater	A/C Link	48°26.793' N	115°53.222' W			
Repeater	CHD 7	48°26.189' N	115°53.677' W			
Repeater	CHD 8	48°26.189' N	115°53.677' W			
Repeater	CHD 9	48°26.189' N	115°53.677' W			
Staging Area	Keeler Staging	48°26.130' N	115°53.111' W			
Staging Area	Keeler Staging	48°26.075' N	115°53.640' W			
Water Source	Water Source	48°26.195' N	115°53.918' W			
Water Source	Water Source	48°26.643' N	115°54.151' W			
Water Source	Water Source	48°26.960' N	115°56.554' W			
Water Source	Water Source	48°26.866' N	115°54.651' W			
Water Source	Water Source	48°26.809' N	115°00.720' W			
Water Source	Water Source	48°26.117' N	115°52.820' W			