

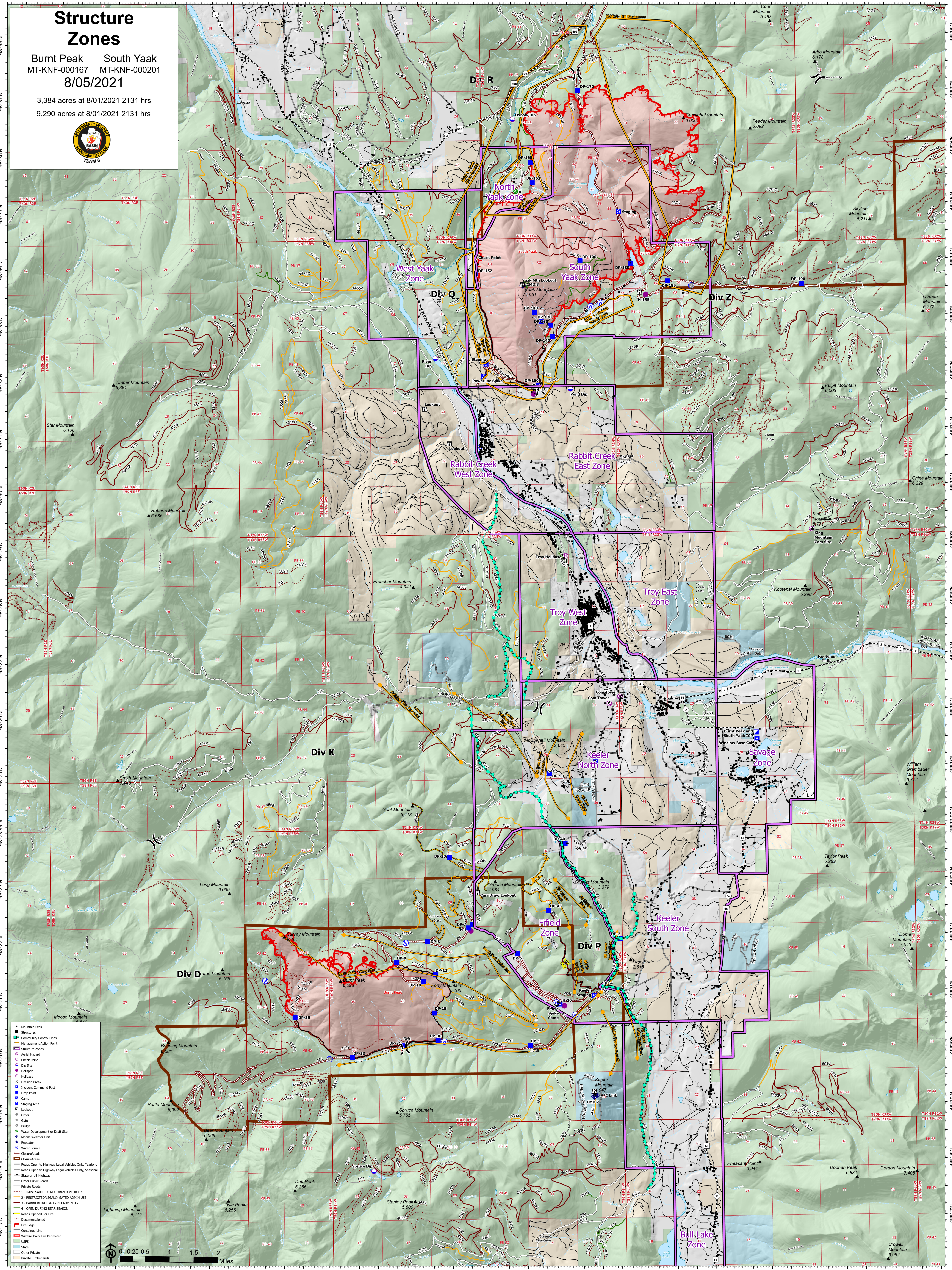
Structure Zones

Burnt Peak South Yaak
MT-KNF-000167 MT-KNF-000201

8/05/2021

3,384 acres at 8/01/2021 2131 hrs

9,290 acres at 8/01/2021 2131 hrs



- Mountain Peak
- Structure
- Structure Control Lines
- Management Action Point
- Structure Hazard
- Aerial Hazard
- Check Point
- Dip Site
- Helispot
- Helibase
- Division Break
- Incident Command Post
- Drop Point
- Camp
- Staging Area
- Lookout
- Other
- Gate
- Bridge
- Water Development or Draft Site
- Mobile Weather Unit
- Repeater
- Water Source
- Closure/Roads
- Closure/Access
- Roads Open to Highway Legal Vehicles Only, Yearlong
- Roads Open to Highway Legal Vehicles Only, Seasonal
- State or US Highway
- Other Public Roads
- Private Roads
- 1 - IMPASSIBLE TO MOTORIZED VEHICLES
- 2 - RESTRICTED/LEGALLY GATED ADMIN USE
- 3 - BARRIERS/LEGALLY NO ADMIN USE
- 4 - OPEN DURING BEAR SEASON
- Roads Opened For Fire
- Decommissioned
- Fire Edge
- Contained Line
- Wildfire Daily Fire Perimeter
- USFS
- State
- Other Private
- Private Timberlands

