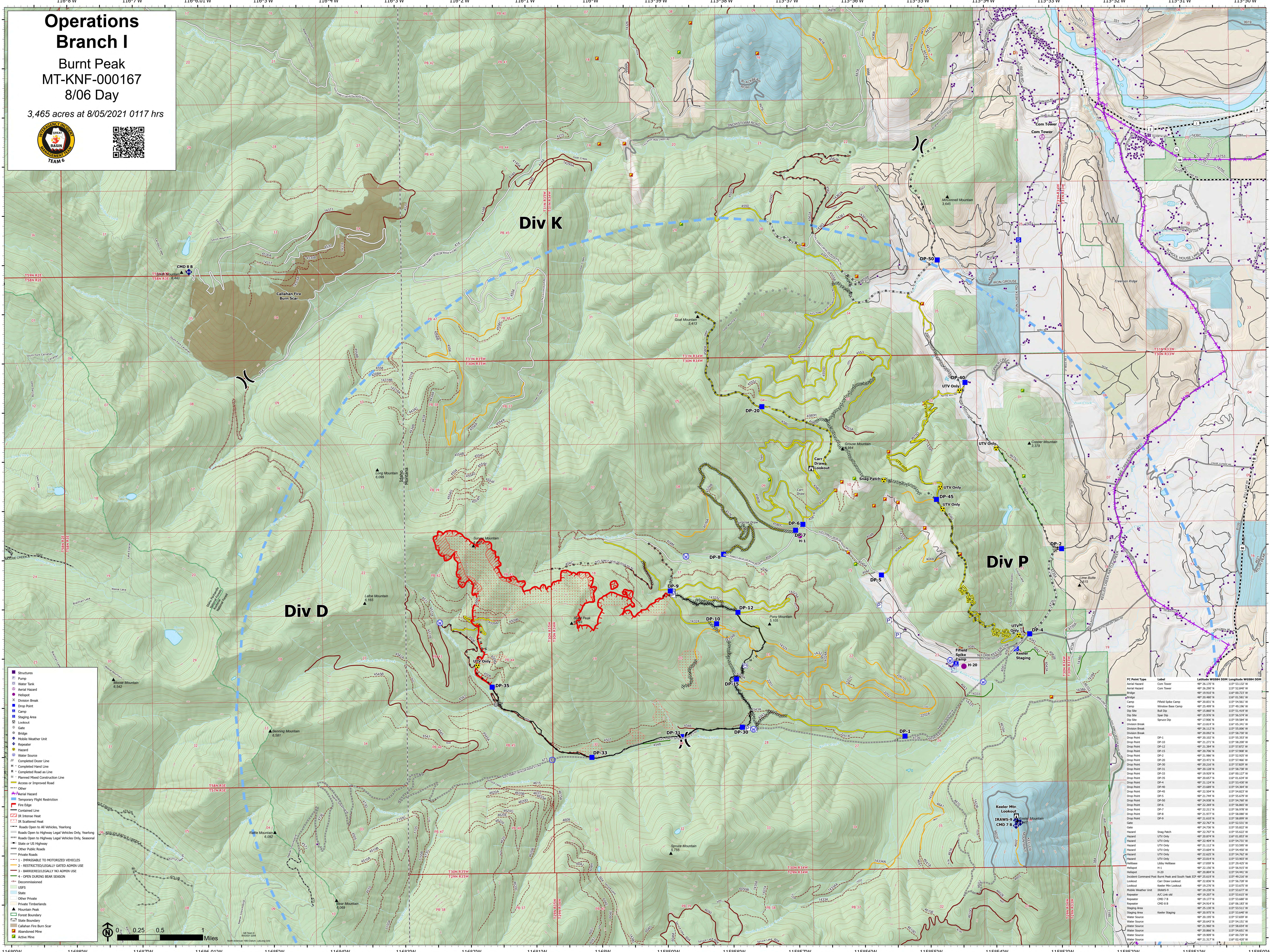


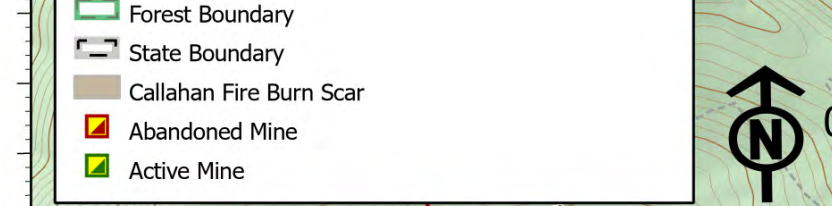
Operations Branch I

Burnt Peak
MT-KNF-000167
8/06 Day

3,465 acres at 8/05/2021 0117 hrs



- Structures
- Pump
- Water Tank
- Aerial Hazard
- Heliport
- Division Break
- Drop Point
- Camp
- Staging Area
- Lookout
- Gate
- Bridge
- Mobile Weather Unit
- Repeater
- Hazard
- Water Source
- Completed Dozer Line
- Completed Hand Line
- Completed Road as Line
- Planned Mined Construction Line
- Access or Improved Road
- Other
- Aerial Hazard
- Temporary Flight Restriction
- Fire Edge
- Controlled Line
- IR Intense Heat
- IR Scattered Heat
- Roads Open to All Vehicles, Yearling
- Roads Open to Highway Legal Vehicles Only, Yearling
- Roads Open to Highway Legal Vehicles Only, Seasonal
- State or US Highway
- Other Public Roads
- Private Roads
- UNINSURABLE TO MOTORIZED VEHICLES
- RESTRICTED/LEGALLY GATED ADMIN USE
- BARRIERED/LEGALLY NO ADMIN USE
- OPEN DURING BEAR SEASON
- Decommission
- USFS
- State
- Other Private
- Private Timberlands
- Mountain Peak
- Forest Boundary
- State Boundary
- Callahan Fire Burn Scar
- Abandoned Mine
- Active Mine



FC Point Type	Label	Latitude	Longitude
Aerial Hazard	Com Tower	48° 26.170' N	115° 53.132' W
Aerial Hazard	Com Tower	48° 26.290' N	115° 52.840' W
Aerial Hazard	Com Tower	48° 26.910' N	115° 50.010' W
Bridge		48° 26.480' N	115° 01.381' W
Camp	Field Site Camp	48° 20.831' N	115° 54.561' W
Camp	Window Bear Camp	48° 26.499' N	115° 49.360' W
Dip Site	Bull Dip	48° 15.860' N	115° 51.419' W
Dip Site	Spur Dip	48° 21.910' N	115° 56.510' W
Dip Site	Spocus Dip	48° 17.900' N	115° 59.984' W
Division Break		48° 21.814' N	115° 09.241' W
Division Break		48° 23.112' N	115° 59.000' W
Drop Point	DP-1	48° 20.892' N	115° 58.730' W
Drop Point	DP-10	48° 26.802' N	115° 53.821' W
Drop Point	DP-11	48° 21.273' N	115° 58.200' W
Drop Point	DP-12	48° 21.384' N	115° 57.872' W
Drop Point	DP-13	48° 26.795' N	115° 52.940' W
Drop Point	DP-2	48° 21.986' N	115° 52.923' W
Drop Point	DP-20	48° 23.471' N	115° 57.466' W
Drop Point	DP-30	48° 26.246' N	115° 53.007' W
Drop Point	DP-31	48° 26.128' N	115° 58.738' W
Drop Point	DP-32	48° 24.028' N	115° 00.327' W
Drop Point	DP-35	48° 20.657' N	115° 01.634' W
Drop Point	DP-4	48° 21.124' N	115° 53.630' W
Drop Point	DP-45	48° 21.869' N	115° 54.584' W
Drop Point	DP-46	48° 21.504' N	115° 54.823' W
Drop Point	DP-5	48° 21.744' N	115° 54.570' W
Drop Point	DP-50	48° 24.938' N	115° 54.907' W
Drop Point	DP-6	48° 22.269' N	115° 58.863' W
Drop Point	DP-7	48° 21.213' N	115° 56.310' W
Drop Point	DP-8	48° 21.977' N	115° 58.800' W
Drop Point	DP-9	48° 21.610' N	115° 58.899' W
Gate		48° 21.767' N	115° 59.000' W
Gate	Snag Patch	48° 24.736' N	115° 53.827' W
Hazard	UTV Only	48° 20.874' N	115° 01.833' W
Hazard	UTV Only	48° 22.494' N	115° 54.731' W
Hazard	UTV Only	48° 21.112' N	115° 53.910' W
Hazard	UTV Only	48° 21.604' N	115° 54.405' W
Hazard	UTV Only	48° 23.625' N	115° 54.762' W
Hazard	UTV Only	48° 21.944' N	115° 53.807' W
Heliport		48° 17.059' N	115° 29.423' W
Heliport		48° 21.218' N	115° 56.317' W
Heliport	H-20	48° 20.894' N	115° 54.441' W
Incident Command Post	Burnt Peak and South Yank ICP	48° 25.619' N	115° 49.218' W
Lookout	Car Draw Lookout	48° 21.816' N	115° 53.010' W
Lookout	Keeler Mtn Lookout	48° 19.276' N	115° 53.473' W
Mobile Weather Unit		48° 19.280' N	115° 53.677' W
Repeater	Keeler Mtn Lookout	48° 19.287' N	115° 53.677' W
Repeater	A/C Link 046	48° 19.177' N	115° 53.680' W
Repeater	CHD 7 B	48° 24.914' N	115° 56.387' W
Repeater	CHD 8 B	48° 25.130' N	115° 53.111' W
Staging Area	Keeler Staging	48° 20.975' N	115° 53.640' W
Water Source		48° 21.915' N	115° 53.810' W
Water Source		48° 20.643' N	115° 54.511' W
Water Source		48° 21.960' N	115° 58.810' W
Water Source		48° 20.866' N	115° 54.651' W
Water Source		48° 19.909' N	115° 00.720' W
Water Source		48° 21.137' N	115° 02.837' W