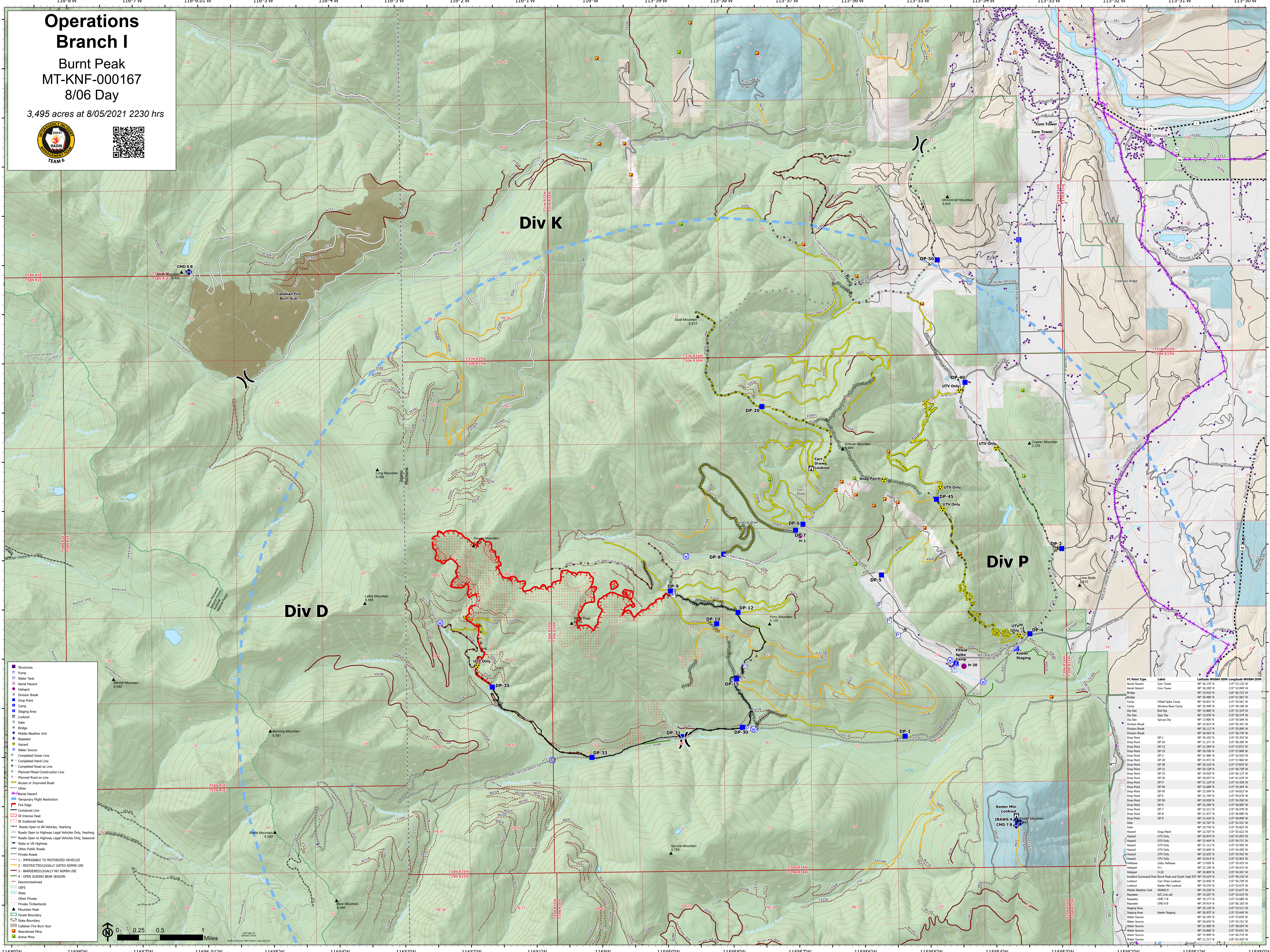


Operations Branch I

Burnt Peak
MT-KNF-000167
8/06 Day

3,495 acres at 8/05/2021 2230 hrs



- Structures
- Pump
- Water Tank
- Aerial Hazard
- Helipoint
- Division Break
- Drop Point
- Camp
- Staging Area
- Lookout
- Gate
- Bridge
- Mobile Weather Unit
- Repeater
- Hazard
- Water Source
- Completed Dozer Line
- Completed Hand Line
- Completed Road as Line
- Planned Road as Line
- Planned Road as Line
- Access or Improved Road
- Other
- Aerial Hazard
- Temporary Flight Restriction
- Fire Edge
- Contained Line
- IR Intense Heat
- IR Scattered Heat
- Roads Open to All Vehicles, Yearling
- Roads Open to Highway Legal Vehicles Only, Yearling
- Roads Open to Highway Legal Vehicles Only, Seasonal
- State or US Highway
- Other Public Roads
- Private Roads
- INACCESSIBLE TO MOTORIZED VEHICLES
- RESTRICTED/LEGALLY GATED ADMIN USE
- BARRIERED/LEGALLY NO ADMIN USE
- OPEN DURING BEAR SEASON
- Decommissioned
- USFS
- State
- Other Private
- Private Timberlands
- Mountain Peak
- Forest Boundary
- State Boundary
- Callahan Fire Burn Scar
- Abandoned Mine
- Active Mine

FC Point Type	Label	Latitude	Longitude
Com Tower	Com Tower	48° 26.170' N	115° 53.137' W
Aerial Hazard	Com Tower	48° 26.200' N	115° 52.940' W
Bridge	Bridge	48° 26.900' N	115° 50.020' W
Field Side Camp	Field Side Camp	48° 26.880' N	115° 50.581' W
Window Bee Camp	Window Bee Camp	48° 26.881' N	115° 54.561' W
Bull Dip	Bull Dip	48° 26.499' N	115° 49.560' W
Spot Dip	Spot Dip	48° 15.860' N	115° 51.439' W
Dip Site	Spot Dip	48° 15.976' N	115° 56.534' W
Dip Site	Spot Dip	48° 17.906' N	115° 59.584' W
Dip Site	Spot Dip	48° 23.854' N	115° 59.341' W
Division Break	Division Break	48° 23.112' N	115° 53.000' W
Drop Point	DP-1	48° 20.692' N	115° 58.730' W
Drop Point	DP-10	48° 26.002' N	115° 53.521' W
Drop Point	DP-12	48° 21.273' N	115° 58.000' W
Drop Point	DP-15	48° 23.384' N	115° 57.872' W
Drop Point	DP-2	48° 26.795' N	115° 52.660' W
Drop Point	DP-2	48° 21.986' N	115° 52.923' W
Drop Point	DP-20	48° 23.471' N	115° 57.466' W
Drop Point	DP-30	48° 26.246' N	115° 57.878' W
Drop Point	DP-31	48° 26.128' N	115° 58.738' W
Drop Point	DP-33	48° 26.028' N	115° 58.327' W
Drop Point	DP-35	48° 20.657' N	115° 01.634' W
Drop Point	DP-4	48° 23.124' N	115° 53.630' W
Drop Point	DP-4	48° 23.689' N	115° 54.544' W
Drop Point	DP-45	48° 23.504' N	115° 54.823' W
Drop Point	DP-5	48° 23.744' N	115° 54.579' W
Drop Point	DP-50	48° 24.038' N	115° 54.760' W
Drop Point	DP-6	48° 22.269' N	115° 56.863' W
Drop Point	DP-7	48° 23.211' N	115° 56.378' W
Drop Point	DP-8	48° 21.977' N	115° 58.000' W
Drop Point	DP-9	48° 23.607' N	115° 58.899' W
Gate	Gate	48° 23.767' N	115° 53.827' W
Gate	Gate	48° 24.738' N	115° 55.822' W
Hazard	Snag Patch	48° 23.112' N	115° 53.000' W
Hazard	UTV Only	48° 20.874' N	115° 01.853' W
Hazard	UTV Only	48° 22.494' N	115° 54.731' W
Hazard	UTV Only	48° 21.112' N	115° 53.800' W
Hazard	UTV Only	48° 23.604' N	115° 54.400' W
Hazard	UTV Only	48° 23.625' N	115° 54.762' W
Hazard	UTV Only	48° 23.824' N	115° 53.800' W
Hazard	UTV Only	48° 22.269' N	115° 56.863' W
Helibase	Helibase	48° 17.099' N	115° 28.423' W
Helipoint	H-1	48° 24.824' N	115° 56.387' W
Helipoint	H-2	48° 20.804' N	115° 54.441' W
Incident Command Post	Incident Command Post Burnt Peak and South Yank ICP	48° 25.619' N	115° 49.218' W
Lookout	Keeler Mtn Lookout	48° 19.276' N	115° 53.673' W
Lookout	Keeler Mtn Lookout	48° 19.276' N	115° 53.673' W
Mobile Weather Unit	Mobile Weather Unit	48° 20.220' N	115° 53.677' W
Repeater	Repeater	48° 19.207' N	115° 53.680' W
Repeater	Repeater	48° 19.177' N	115° 53.680' W
Repeater	Repeater	48° 19.804' N	115° 56.387' W
Repeater	Repeater	48° 25.130' N	115° 53.311' W
Staging Area	Keeler Staging	48° 20.975' N	115° 53.640' W
Water Source	Water Source	48° 23.744' N	115° 54.579' W
Water Source	Water Source	48° 20.643' N	115° 54.551' W
Water Source	Water Source	48° 21.960' N	115° 58.500' W
Water Source	Water Source	48° 20.866' N	115° 54.651' W
Water Source	Water Source	48° 19.809' N	115° 01.729' W
Water Source	Water Source	48° 19.337' N	115° 02.007' W

