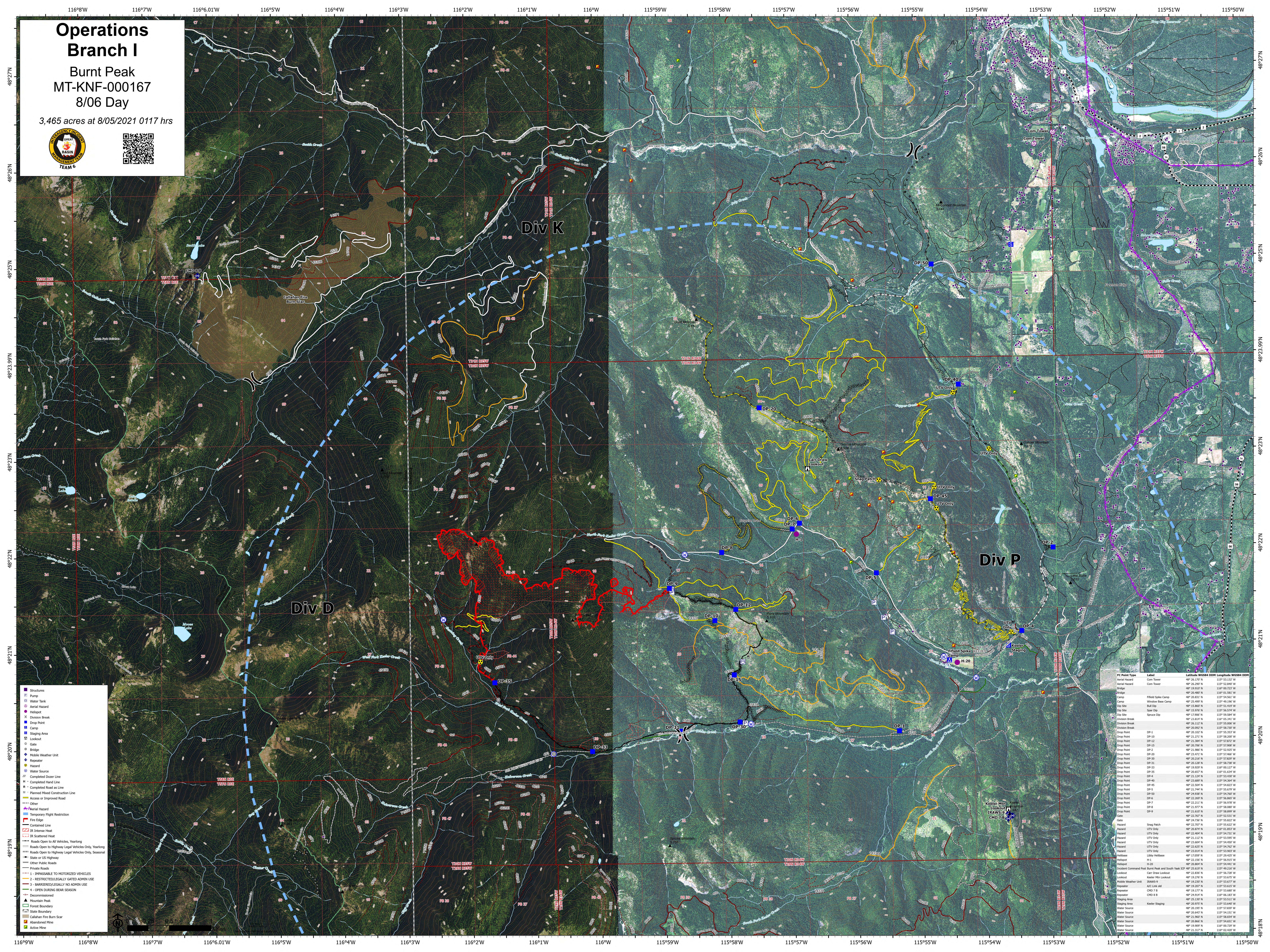


Operations Branch I

Burnt Peak
MT-KNF-000167
8/06 Day

3,465 acres at 8/05/2021 0117 hrs



- Structures
- Runoff
- Water Tank
- Aerial Hazard
- Helispot
- Division Break
- Drop Point
- Camp
- Staging Area
- Lookout
- Gate
- Bridge
- Mobile Weather Unit
- Repeater
- Hazard
- Water Source
- Completed Dozer Line
- Completed Road as Line
- Completed Road as Line
- Planned Mixed Construction Line
- Access or Improved Road
- Other
- Aerial Hazard
- Temporary Flight Restriction
- Fire Edge
- Contained Line
- IR Intense Heat
- IR Scattered Heat
- Roads Open to All Vehicles, Yearling
- Roads Open to Highway Legal Vehicles Only, Yearling
- Roads Open to Highway Legal Vehicles Only, Seasonal
- State or US Highway
- Other Public Roads
- Private Roads
- 1 - IMPOSSIBLE TO MOTORIZED VEHICLES
- 2 - RESTRICTED/LEGALLY GATED ADMIN USE
- 3 - BARRIERED/LEGALLY NO ADMIN USE
- 4 - OPEN DURING BEAR SEASON
- Decommissioned
- Mountain Peak
- Forest Boundary
- State Boundary
- Cullahan Fire Burn Scar
- Abandoned Mine
- Active Mine

FC Point Type	Label	Latitude	Longitude	Length	Width	DOH
Aerial Hazard	Com Tower	48°26.170' N	115°53.132' W			
Aerial Hazard	Com Tower	48°26.290' N	115°52.840' W			
Bridge		48°26.480' N	115°51.881' W			
Camp	Field Site Camp	48°20.833' N	115°54.551' W			
Camp	Window Boer Camp	48°26.499' N	115°51.493' W			
Dip Site	Bull Dip	48°15.860' N	115°51.419' W			
Dip Site	Spot Dip	48°26.976' N	115°56.244' W			
Dip Site	Spouce Dip	48°17.900' N	115°58.584' W			
Division Break		48°21.854' N	115°59.241' W			
Division Break		48°26.122' N	115°55.006' W			
Drop Point	DP-1	48°20.892' N	115°58.730' W			
Drop Point	DP-10	48°21.273' N	115°58.000' W			
Drop Point	DP-12	48°21.384' N	115°57.672' W			
Drop Point	DP-15	48°26.795' N	115°57.947' W			
Drop Point	DP-2	48°21.986' N	115°52.923' W			
Drop Point	DP-20	48°21.471' N	115°57.466' W			
Drop Point	DP-30	48°26.248' N	115°57.927' W			
Drop Point	DP-31	48°26.128' N	115°58.738' W			
Drop Point	DP-33	48°26.628' N	115°58.237' W			
Drop Point	DP-35	48°26.657' N	115°58.634' W			
Drop Point	DP-4	48°21.124' N	115°53.637' W			
Drop Point	DP-40	48°26.889' N	115°54.584' W			
Drop Point	DP-45	48°21.504' N	115°54.823' W			
Drop Point	DP-5	48°21.744' N	115°56.570' W			
Drop Point	DP-50	48°26.438' N	115°54.947' W			
Drop Point	DP-6	48°22.269' N	115°58.863' W			
Drop Point	DP-7	48°21.211' N	115°56.979' W			
Drop Point	DP-8	48°21.977' N	115°58.800' W			
Drop Point	DP-9	48°21.610' N	115°58.899' W			
Gate		48°26.787' N	115°53.311' W			
Gate		48°24.736' N	115°55.822' W			
Hazard	UTV Only	48°26.787' N	115°53.822' W			
Hazard	UTV Only	48°26.874' N	115°51.853' W			
Hazard	UTV Only	48°22.484' N	115°54.731' W			
Hazard	UTV Only	48°21.122' N	115°53.807' W			
Hazard	UTV Only	48°23.604' N	115°54.400' W			
Hazard	UTV Only	48°21.625' N	115°54.762' W			
Hazard	UTV Only	48°26.624' N	115°53.807' W			
Helispot	Libby Helibase	48°17.659' N	115°29.423' W			
Helispot	H-1	48°21.211' N	115°56.979' W			
Helispot	H-20	48°20.894' N	115°54.441' W			
Incident Command Post	Burnt Peak and South Peak ICP	48°26.619' N	115°49.218' W			
Lookout	Car Draw Lookout	48°21.876' N	115°53.673' W			
Lookout	Keeler Mtn Lookout	48°19.276' N	115°53.673' W			
Repeater	Keeler Mtn Lookout	48°19.276' N	115°53.673' W			
Repeater	ARC Link 046	48°19.280' N	115°53.677' W			
Repeater	CHD 7 B	48°19.207' N	115°53.680' W			
Repeater	CHD 8 B	48°19.177' N	115°53.680' W			
Repeater	CHD 9 B	48°19.147' N	115°53.680' W			
Staging Area	Keeler Staging	48°25.130' N	115°53.111' W			
Staging Area	Keeler Staging	48°20.975' N	115°53.640' W			
Water Source		48°26.163' N	115°53.549' W			
Water Source		48°26.643' N	115°54.151' W			
Water Source		48°26.960' N	115°53.554' W			
Water Source		48°26.866' N	115°54.651' W			
Water Source		48°19.809' N	115°00.707' W			
Water Source		48°21.127' N	115°52.822' W			