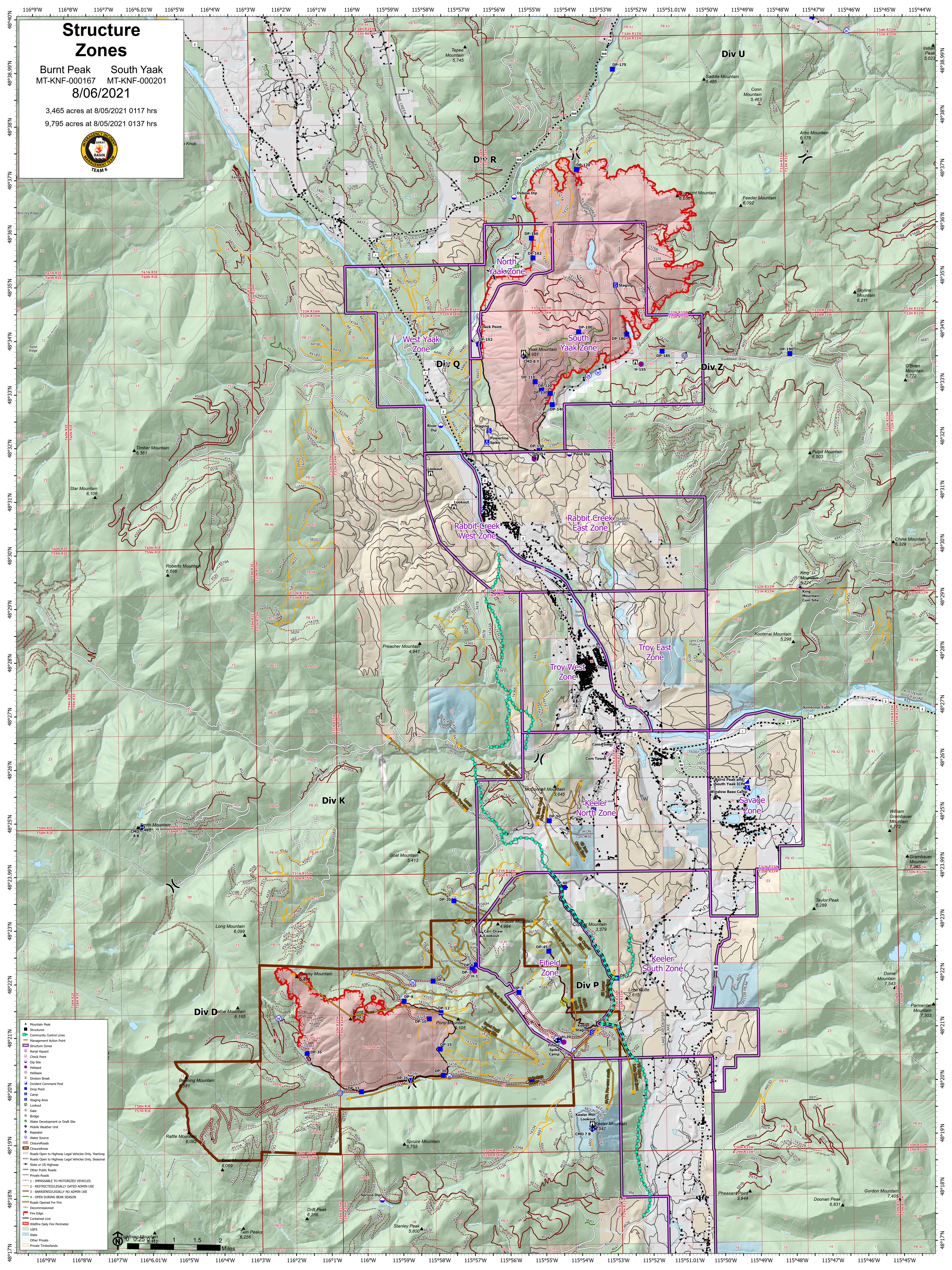


# Structure Zones

Burnt Peak South Yaak  
MT-KNF-000167 MT-KNF-000201  
8/06/2021

3,465 acres at 8/05/2021 0117 hrs  
9,795 acres at 8/05/2021 0137 hrs



- Mountain Peak
  - Structure
  - Community Control Lines
  - Management Action Point
  - Structure Zones
  - Check Point
  - Check Point
  - Dip Site
  - Helicopter
  - Division Break
  - Incident Command Post
  - Drop Point
  - Camp
  - Staging Area
  - Lookout
  - Gate
  - Bridge
  - Water Development or Draft Site
  - Mobile Weather Unit
  - Repeater
  - Water Source
  - State
  - Other Private
  - Private Timbers
- Roads Open to Highway Legal Vehicles Only, Yearlong
- Roads Open to Highway Legal Vehicles Only, Seasonal
- State or US Highway
- Other Public Roads
- Private Roads
- 1 - IMPASSABLE TO MOTORIZED VEHICLES
- 2 - RESTRICTED LEGALLY GATED ADMIN USE
- 3 - BARRIERS LEGALLY NO ADMIN USE
- 4 - OPEN DURING BEAR SEASON
- Roads Opened For Fire
- Decommissioned
- Fire Edge
- Contained Line
- Wildfire Daily Fire Perimeter
- USFS
- Other Private
- Private Timbers

