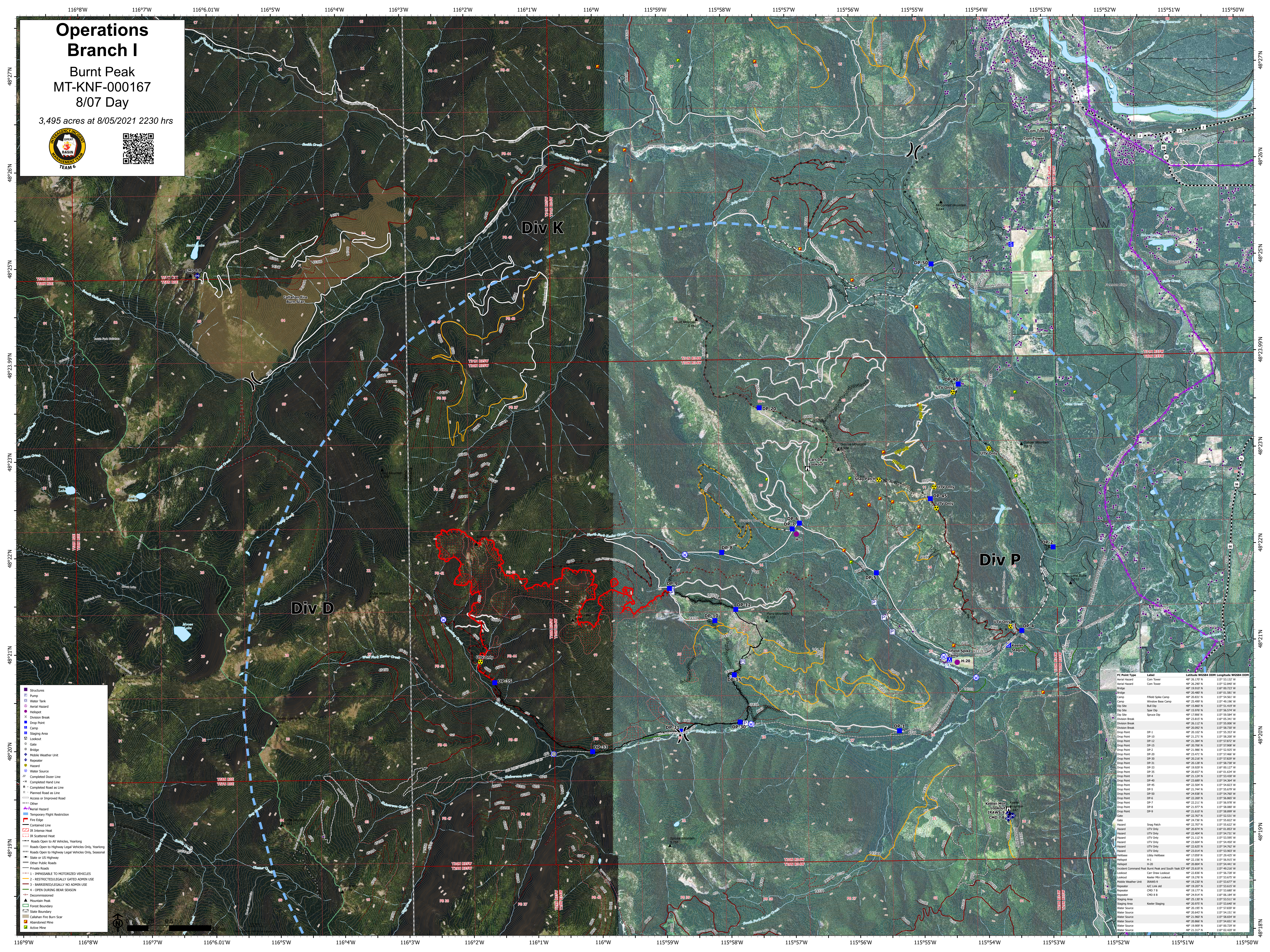


Operations Branch I

Burnt Peak
MT-KNF-000167
8/07 Day

3,495 acres at 8/05/2021 2230 hrs



- Structures
- Runway
- Water Tank
- Aerial Hazard
- Helipoint
- Division Break
- Drop Point
- Camp
- Staging Area
- Lookout
- Gate
- Bridge
- Mobile Weather Unit
- Repeater
- Hazard
- Water Source
- Completed Dozer Line
- Inaccessible to Motorized Vehicles
- Completed Road as Line
- Planned Road as Line
- Access or Improved Road
- Other
- Aerial Hazard
- Temporary Flight Restriction
- Fire Edge
- Contained Line
- IR Intense Heat
- IR Scattered Heat
- Roads Open to All Vehicles, Yearlong
- Roads Open to Highway Legal Vehicles Only, Yearlong
- Roads Open to Highway Legal Vehicles Only, Seasonal
- State or US Highway
- Other Public Roads
- Private Roads
- 1 - INACCESSIBLE TO MOTORIZED VEHICLES
- 2 - RESTRICTED/LEGALLY GATED ADMIN USE
- 3 - BARRIERED/LEGALLY NO ADMIN USE
- 4 - OPEN DURING BEAR SEASON
- Decommissioned
- Mountain Peak
- Forest Boundary
- State Boundary
- Cathlamet Fire Burn Scar
- Abandoned Mine
- Active Mine

FC Point Type	Label	Latitude	Longitude	Length	Width	DOH
Aerial Hazard	Com Tower	48° 26.170' N	115° 53.132' W			
Aerial Hazard	Com Tower	48° 26.200' N	115° 52.840' W			
Bridge		48° 26.480' N	115° 00.000' W			
Bridge		48° 26.480' N	115° 01.581' W			
Camp	Field Site Camp	48° 20.835' N	115° 54.551' W			
Camp	Window Bee Camp	48° 25.499' N	115° 49.390' W			
Dip Site	Bud Dip	48° 15.860' N	115° 51.433' W			
Dip Site	Spot Dip	48° 25.976' N	115° 56.514' W			
Dip Site	Spouce Dip	48° 17.900' N	115° 59.594' W			
Division Break		48° 26.112' N	115° 55.000' W			
Division Break		48° 26.092' N	115° 58.730' W			
Drop Point	DP-1	48° 26.100' N	115° 55.523' W			
Drop Point	DP-10	48° 21.273' N	115° 58.000' W			
Drop Point	DP-12	48° 21.384' N	115° 57.672' W			
Drop Point	DP-15	48° 25.765' N	115° 53.907' W			
Drop Point	DP-2	48° 21.986' N	115° 52.923' W			
Drop Point	DP-20	48° 23.473' N	115° 57.466' W			
Drop Point	DP-30	48° 26.248' N	115° 53.027' W			
Drop Point	DP-31	48° 26.128' N	115° 58.738' W			
Drop Point	DP-33	48° 26.028' N	115° 00.337' W			
Drop Point	DP-35	48° 20.657' N	115° 01.634' W			
Drop Point	DP-4	48° 21.124' N	115° 53.620' W			
Drop Point	DP-40	48° 25.689' N	115° 54.524' W			
Drop Point	DP-45	48° 21.504' N	115° 54.823' W			
Drop Point	DP-5	48° 21.744' N	115° 56.570' W			
Drop Point	DP-50	48° 26.438' N	115° 54.670' W			
Drop Point	DP-6	48° 22.289' N	115° 56.863' W			
Drop Point	DP-7	48° 22.213' N	115° 56.578' W			
Drop Point	DP-8	48° 21.077' N	115° 58.000' W			
Drop Point	DP-9	48° 21.610' N	115° 58.899' W			
Gate		48° 26.787' N	115° 55.822' W			
Gate		48° 20.874' N	115° 01.853' W			
Hazard	UTV Only	48° 22.494' N	115° 54.731' W			
Hazard	UTV Only	48° 21.123' N	115° 53.907' W			
Hazard	UTV Only	48° 23.604' N	115° 54.400' W			
Hazard	UTV Only	48° 23.825' N	115° 54.782' W			
Hazard	UTV Only	48° 23.814' N	115° 53.802' W			
Helibase	Lobby Helibase	48° 17.059' N	115° 29.423' W			
Helipoint	H-1	48° 22.514' N	115° 56.578' W			
Helipoint	H-20	48° 20.804' N	115° 54.441' W			
Incident Command Post	Burnt Peak and South Peak ICP	48° 25.819' N	115° 49.218' W			
Lookout	Car Draw Lookout	48° 25.802' N	115° 54.728' W			
Lookout	Keeler Mtn Lookout	48° 19.276' N	115° 53.675' W			
Lookout	Keeler Mtn Lookout	48° 19.280' N	115° 53.677' W			
Repeater	ARC Link 4d	48° 18.207' N	115° 53.617' W			
Repeater	CHD 7 B	48° 19.177' N	115° 53.680' W			
Repeater	CHD 8 B	48° 18.514' N	115° 56.514' W			
Staging Area		48° 25.130' N	115° 53.111' W			
Staging Area	Keeler Staging	48° 20.975' N	115° 53.642' W			
Water Source		48° 25.195' N	115° 57.919' W			
Water Source		48° 20.643' N	115° 54.151' W			
Water Source		48° 21.960' N	115° 53.854' W			
Water Source		48° 20.866' N	115° 54.651' W			
Water Source		48° 19.809' N	115° 00.707' W			
Water Source		48° 21.117' N	115° 02.402' W			