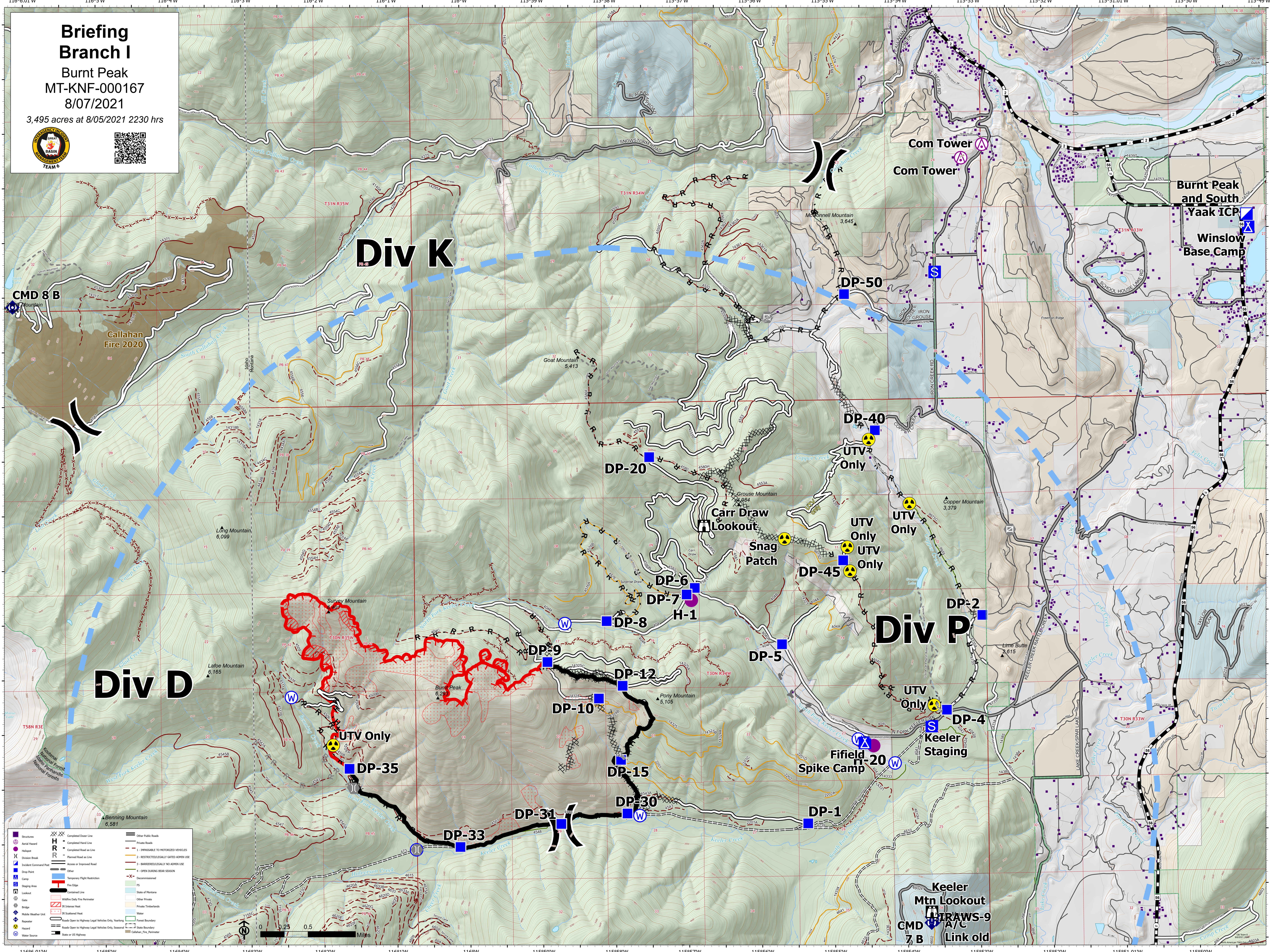


Briefing Branch I
Burnt Peak
MT-KNF-000167
8/07/2021
3,495 acres at 8/05/2021 2230 hrs



	Structures		Completed Drier Line		Other Public Roads
	Aerial Hazard		Completed Hand Line		Private Roads
	Helipoint		Restricted Road as Line		1 - IMPASSIBLE TO MOTORIZED VEHICLES
	Division Break		Planned Road as Line		2 - RESTRICTED/LEGALLY GATED ADHIN USE
	Incident Command Post		Access or Improved Road		3 - BARREDED/LEGALLY NO ADHIN USE
	Drop Point		Other		OPEN DURING BEAR SEASON
	Camp		Decommissioned		FS
	Staging Area		Fire Edge		State of Montana
	Gate		Contained Line		Other Private
	Bridge		Wildfire Daily Fire Perimeter		Private Timberlands
	Public Weather Unit		IR Intense Heat		Forest Boundary
	Responder		IR Scattered Heat		Water
	Hazard		Roads Open to Highway Legal Vehicles Only, Yearling		Roads Open to Highway Legal Vehicles Only, Seasonal
	Water Source		Roads Open to Highway Legal Vehicles Only, Yearling		State Boundary
			State or US Highway		Callahan Fire Perimeter

116°6.01'W 116°5'W 116°4'W 116°3'W 116°2'W 116°1'W 116°W 115°59'W 115°58'W 115°57'W 115°56'W 115°55'W 115°54'W 115°53'W 115°52'W 115°51.01'W 115°50'W