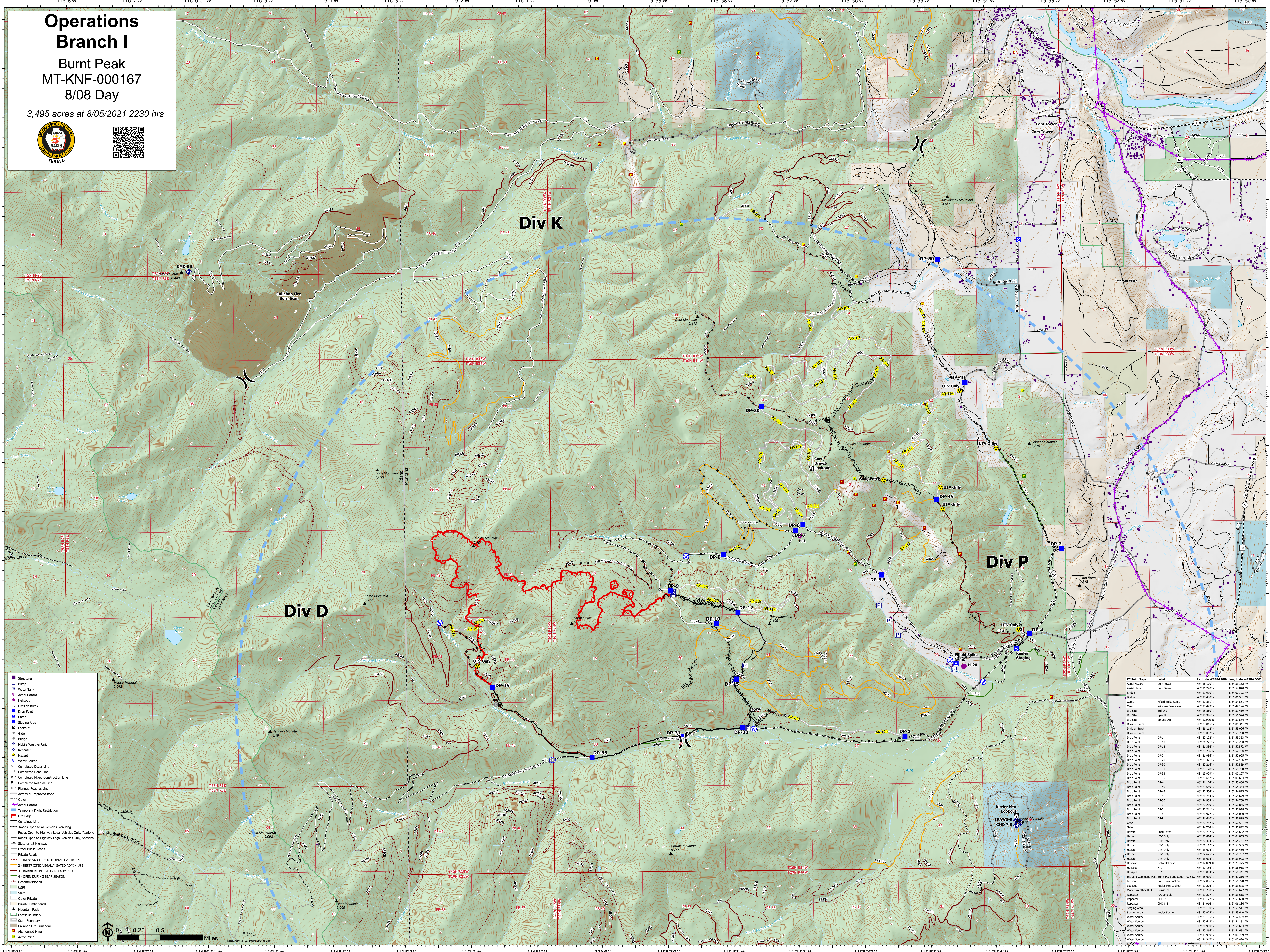


Operations Branch I

Burnt Peak MT-KNF-000167 8/08 Day

3,495 acres at 8/05/2021 2230 hrs



- Structures
- Pump
- Water Tank
- Aerial Hazard
- Helipad
- Division Break
- Drop Point
- Camp
- Staging Area
- Lookout
- Gate
- Bridge
- Mobile Weather Unit
- Repeater
- Hazard
- Water Source
- Completed Road as Line
- Planned Road as Line
- Completed Road as Line
- Planned Road as Line
- Access or Improved Road
- Other
- Aerial Hazard
- Temporary Flight Restriction
- Fire Edge
- Contained Line
- Roads Open to All Vehicles, Yearling
- Roads Open to Highway Legal Vehicles Only, Yearling
- Roads Open to Highway Legal Vehicles Only, Seasonal
- State or US Highway
- Other Public Roads
- Private Roads
- 1 - INACCESSIBLE TO MOTORIZED VEHICLES
- 2 - RESTRICTED/LEGALLY GATED ADMIN USE
- 3 - BARRIERED/LEGALLY NO ADMIN USE
- 4 - OPEN DURING BEAR SEASON
- Decommissioned
- USFS
- State
- Other Private
- Private Timberlands
- Mountain Peak
- Forest Boundary
- State Boundary
- Callahan Fire Burn Scar
- Abandoned Mine
- Active Mine

FC Point Type	Label	Latitude	Longitude
Aerial Hazard	Com Tower	48° 26.170' N	115° 53.137' W
Aerial Hazard	Com Tower	48° 26.200' N	115° 52.840' W
Bridge	Bridge	48° 26.920' N	115° 50.022' W
Bridge	Bridge	48° 26.480' N	115° 51.581' W
Camp	Field Site Camp	48° 20.833' N	115° 54.561' W
Camp	Window Bee Camp	48° 25.499' N	115° 49.390' W
Dip Site	But Dip	48° 15.860' N	115° 51.439' W
Dip Site	Spot Dip	48° 21.970' N	115° 56.510' W
Dip Site	Spouce Dip	48° 17.900' N	115° 59.594' W
Division Break	Division Break	48° 21.815' N	115° 05.241' W
Division Break	Division Break	48° 26.122' N	115° 55.000' W
Drop Point	DP-1	48° 20.892' N	115° 58.730' W
Drop Point	DP-10	48° 21.000' N	115° 55.822' W
Drop Point	DP-11	48° 21.273' N	115° 58.000' W
Drop Point	DP-12	48° 21.384' N	115° 57.872' W
Drop Point	DP-13	48° 20.705' N	115° 52.908' W
Drop Point	DP-2	48° 21.986' N	115° 52.923' W
Drop Point	DP-20	48° 23.473' N	115° 57.466' W
Drop Point	DP-30	48° 20.248' N	115° 57.820' W
Drop Point	DP-31	48° 20.128' N	115° 58.738' W
Drop Point	DP-32	48° 20.029' N	115° 58.327' W
Drop Point	DP-35	48° 20.657' N	115° 01.634' W
Drop Point	DP-4	48° 21.124' N	115° 53.630' W
Drop Point	DP-40	48° 23.869' N	115° 54.584' W
Drop Point	DP-45	48° 22.504' N	115° 54.823' W
Drop Point	DP-5	48° 21.744' N	115° 54.570' W
Drop Point	DP-6	48° 22.438' N	115° 54.700' W
Drop Point	DP-7	48° 22.289' N	115° 56.863' W
Drop Point	DP-8	48° 22.211' N	115° 56.320' W
Drop Point	DP-9	48° 21.077' N	115° 58.800' W
Drop Point	DP-15	48° 21.630' N	115° 58.899' W
Drop Point	DP-16	48° 21.767' N	115° 53.311' W
Gate	Gate	48° 24.738' N	115° 55.822' W
Hazard	Snag Patch	48° 20.874' N	115° 01.853' W
Hazard	UTV Only	48° 22.494' N	115° 54.731' W
Hazard	UTV Only	48° 21.122' N	115° 53.900' W
Hazard	UTV Only	48° 23.604' N	115° 54.400' W
Hazard	UTV Only	48° 23.825' N	115° 54.762' W
Hazard	UTV Only	48° 23.614' N	115° 53.801' W
Helibase	Ledy Helibase	48° 17.099' N	115° 29.423' W
Helipad	H-1	48° 24.514' N	115° 56.384' W
Helipad	H-20	48° 20.804' N	115° 54.441' W
Incident Command Post	Burnt Peak and South Yank ICP	48° 25.619' N	115° 49.218' W
Lookout	Keeler Mtn Lookout	48° 19.276' N	115° 53.675' W
Lookout	Keeler Mtn Lookout	48° 19.276' N	115° 53.675' W
Mobile Weather Unit	Shaw's	48° 19.280' N	115° 53.677' W
Repeater	A/C Link old	48° 19.207' N	115° 53.611' W
Repeater	CHD 7 B	48° 19.177' N	115° 53.680' W
Repeater	CHD 8 B	48° 19.199' N	115° 56.384' W
Staging Area	Keeler Staging	48° 25.130' N	115° 53.311' W
Water Source	Water Source	48° 20.975' N	115° 53.640' W
Water Source	Water Source	48° 21.995' N	115° 53.030' W
Water Source	Water Source	48° 20.643' N	115° 54.551' W
Water Source	Water Source	48° 21.968' N	115° 58.583' W
Water Source	Water Source	48° 20.866' N	115° 54.651' W
Water Source	Water Source	48° 19.809' N	115° 00.700' W
Water Source	Water Source	48° 21.317' N	115° 00.800' W