

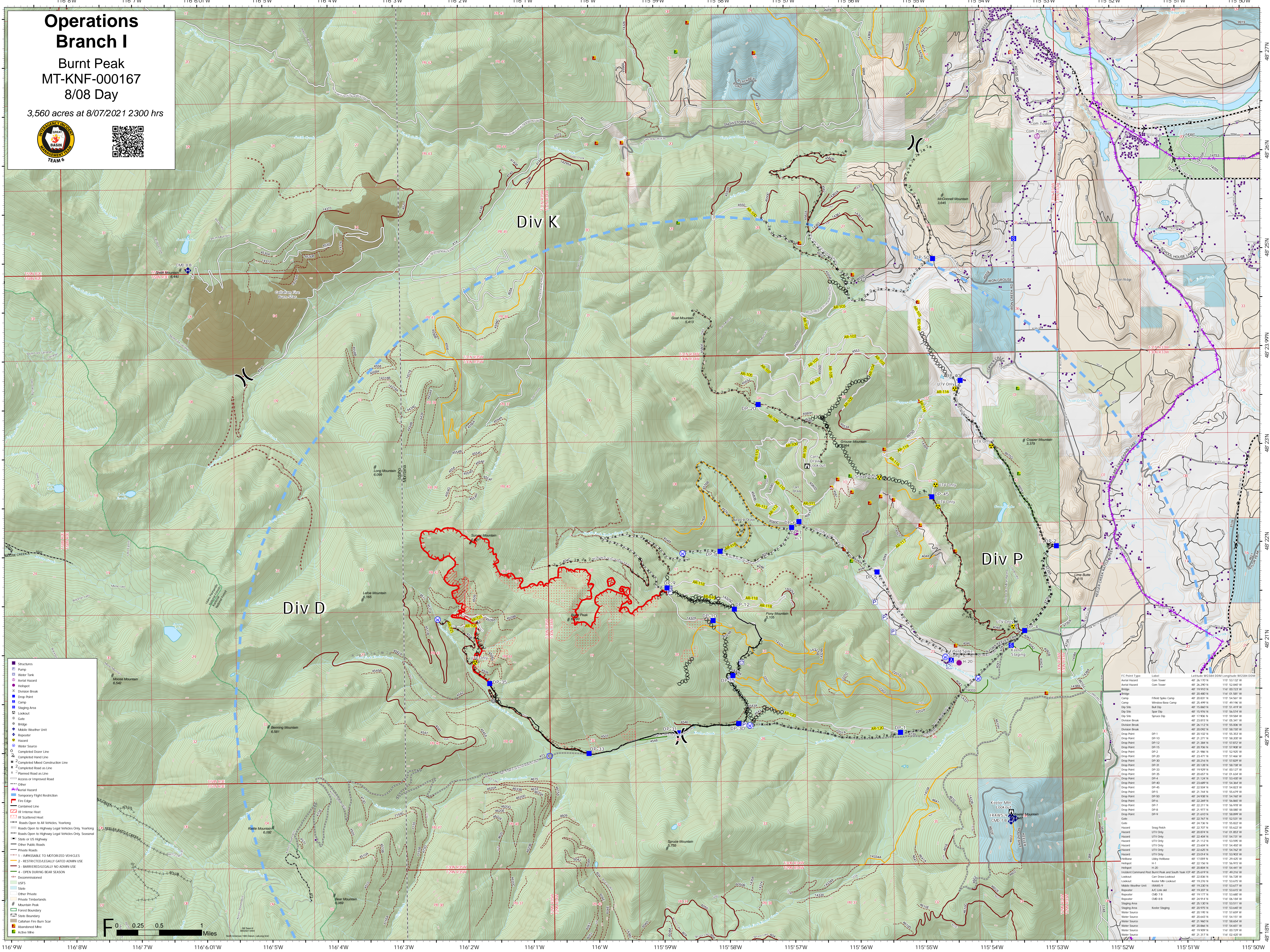


Operations Branch I

Burnt Peak MT-KNF-000167

8/08 Day

3,560 acres at 8/07/2021 2300 hrs

Div K

Div P

Div D

- | Symbol | Description |
|--------|---|
| ■ | Structures |
| ○ | Pump |
| ○ | Water Tank |
| ○ | Aerial Hazard |
| ○ | Holepoint |
| ○ | Division Break |
| ○ | Drop Point |
| ○ | Camp |
| ○ | Staging Area |
| ○ | Lookout |
| ○ | Cave |
| ○ | Bridge |
| ○ | Mobile Weather Unit |
| ○ | Repeater |
| ○ | Hazard |
| ○ | Water Source |
| ○ | Completed Dozer Line |
| ○ | Completed Hand Line |
| ○ | Completed Mead Construction Line |
| ○ | Completed Road as Line |
| ○ | Planned Road as Line |
| ○ | Access or Improved Road |
| ○ | Other |
| ○ | Aerial Hazard |
| ○ | Temporary Flight Restriction |
| ○ | Fire Edge |
| ○ | Completed Line |
| ○ | IR Intersect Heat |
| ○ | IR Scattered Heat |
| ○ | Roads Open to All Vehicles, Yearling |
| ○ | Roads Open to Highway Legal Vehicles Only, Yearling |
| ○ | Roads Open to Highway Legal Vehicles Only, Seasonal |
| ○ | State or US Highway |
| ○ | Other Public Roads |
| ○ | Private Roads |
| ○ | 1 - INACCESSIBLE TO MOTORIZED VEHICLES |
| ○ | 2 - RESTRICTED/LEGALLY GATED ADMIN USE |
| ○ | 3 - BARRIERED/LEGALLY NO ADMIN USE |
| ○ | 4 - OPEN DURING BEAR SEASON |
| ○ | Decommissioned |
| ○ | USFS |
| ○ | State |
| ○ | Other Private |
| ○ | Private Timberlands |
| ○ | Municipal Peak |
| ○ | Forest Boundary |
| ○ | State Boundary |
| ○ | California Fire Burn Scar |
| ○ | Abandoned Mine |
| ○ | Active Mine |

FC Point Type	Label	Lat	Lon
Aerial Hazard	Com Tower	48° 26' 17.0" N	115° 53' 12.0" W
Aerial Hazard	Com Tower	48° 26' 29.0" N	115° 52' 58.0" W
AR-102	AR-102	48° 25' 48.0" N	115° 51' 58.0" W
Camp	Field Spike Camp	48° 25' 03.0" N	115° 54' 50.0" W
Camp	Window Bear Camp	48° 25' 49.0" N	115° 53' 58.0" W
Dip Site	But Dip	48° 15' 00.0" N	115° 53' 41.0" W
Dip Site	Spur Dip	48° 15' 09.0" N	115° 54' 01.0" W
Dip Site	Spur Dip	48° 17' 00.0" N	115° 59' 58.0" W
Division Break	Division Break	48° 25' 05.0" N	115° 55' 51.0" W
Division Break	Division Break	48° 25' 12.0" N	115° 55' 55.0" W
DP-1	DP-1	48° 25' 02.0" N	115° 55' 7.0" W
DP-10	DP-10	48° 25' 10.0" N	115° 55' 25.0" W
DP-12	DP-12	48° 25' 38.0" N	115° 53' 52.0" W
DP-15	DP-15	48° 25' 78.0" N	115° 52' 08.0" W
DP-2	DP-2	48° 25' 06.0" N	115° 52' 9.0" W
DP-20	DP-20	48° 25' 41.0" N	115° 53' 46.0" W
DP-30	DP-30	48° 25' 24.0" N	115° 53' 52.0" W
DP-35	DP-35	48° 25' 12.0" N	115° 58' 7.0" W
DP-4	DP-4	48° 25' 12.0" N	115° 55' 12.0" W
DP-45	DP-45	48° 25' 12.0" N	115° 53' 53.0" W
DP-5	DP-5	48° 25' 49.0" N	115° 54' 54.0" W
DP-55	DP-55	48° 25' 54.0" N	115° 54' 52.0" W
DP-6	DP-6	48° 25' 14.0" N	115° 54' 56.0" W
DP-65	DP-65	48° 25' 12.0" N	115° 54' 56.0" W
DP-7	DP-7	48° 25' 28.0" N	115° 56' 88.0" W
DP-8	DP-8	48° 25' 21.0" N	115° 56' 90.0" W
DP-9	DP-9	48° 25' 10.0" N	115° 56' 90.0" W
DP-95	DP-95	48° 25' 10.0" N	115° 55' 32.0" W
Goat	Goat	48° 24' 7.0" N	115° 55' 52.0" W
Hazard	Smog Presh	48° 25' 10.0" N	115° 55' 32.0" W
Hazard	UTV Only	48° 25' 07.0" N	115° 55' 13.0" W
Hazard	UTV Only	48° 25' 48.0" N	115° 54' 73.0" W
Hazard	UTV Only	48° 25' 11.0" N	115° 53' 54.0" W
Hazard	UTV Only	48° 25' 04.0" N	115° 54' 40.0" W
Hazard	UTV Only	48° 25' 02.0" N	115° 54' 52.0" W
Hazard	UTV Only	48° 25' 12.0" N	115° 53' 80.0" W
Hazard	UTV Only	48° 25' 21.0" N	115° 54' 01.0" W
Hazard	Libby Helibase	48° 17' 09.0" N	115° 29' 43.0" W
Holepoint	Holepoint	48° 25' 12.0" N	115° 54' 12.0" W
Indirect Command Post	Indirect Command Post Burnt Peak and South Fork ICP	48° 25' 49.0" N	115° 49' 21.0" W
Lookout	Keeler Mtn Lookout	48° 25' 38.0" N	115° 53' 08.0" W
Lookout	Keeler Mtn Lookout	48° 19' 27.0" N	115° 53' 47.0" W
Mobile Weather Unit	Mobile Weather Unit	48° 19' 22.0" N	115° 53' 57.0" W
Repeater	CMO Link 66	48° 25' 12.0" N	115° 53' 53.0" W
Repeater	CMO 7 B	48° 19' 17.0" N	115° 53' 68.0" W
Repeater	CMO 8 A	48° 25' 12.0" N	115° 54' 54.0" W
Repeater	CMO 8 B	48° 25' 12.0" N	115° 54' 54.0" W
Staging Area	Keeler Staging	48° 25' 12.0" N	115° 53' 51.0" W
Staging Area	Keeler Staging	48° 25' 09.0" N	115° 53' 63.0" W
Water Source	Water Source	48° 25' 12.0" N	115° 53' 58.0" W
Water Source	Water Source	48° 25' 42.0" N	115° 54' 51.0" W
Water Source	Water Source	48° 25' 46.0" N	115° 54' 51.0" W
Water Source	Water Source	48° 25' 46.0" N	115° 54' 46.0" W
Water Source	Water Source	48° 19' 49.0" N	115° 00' 52.0" W
Water Source	Water Source	48° 19' 51.0" N	115° 00' 52.0" W

Scale: 0, 0.25, 0.5, 1 Miles