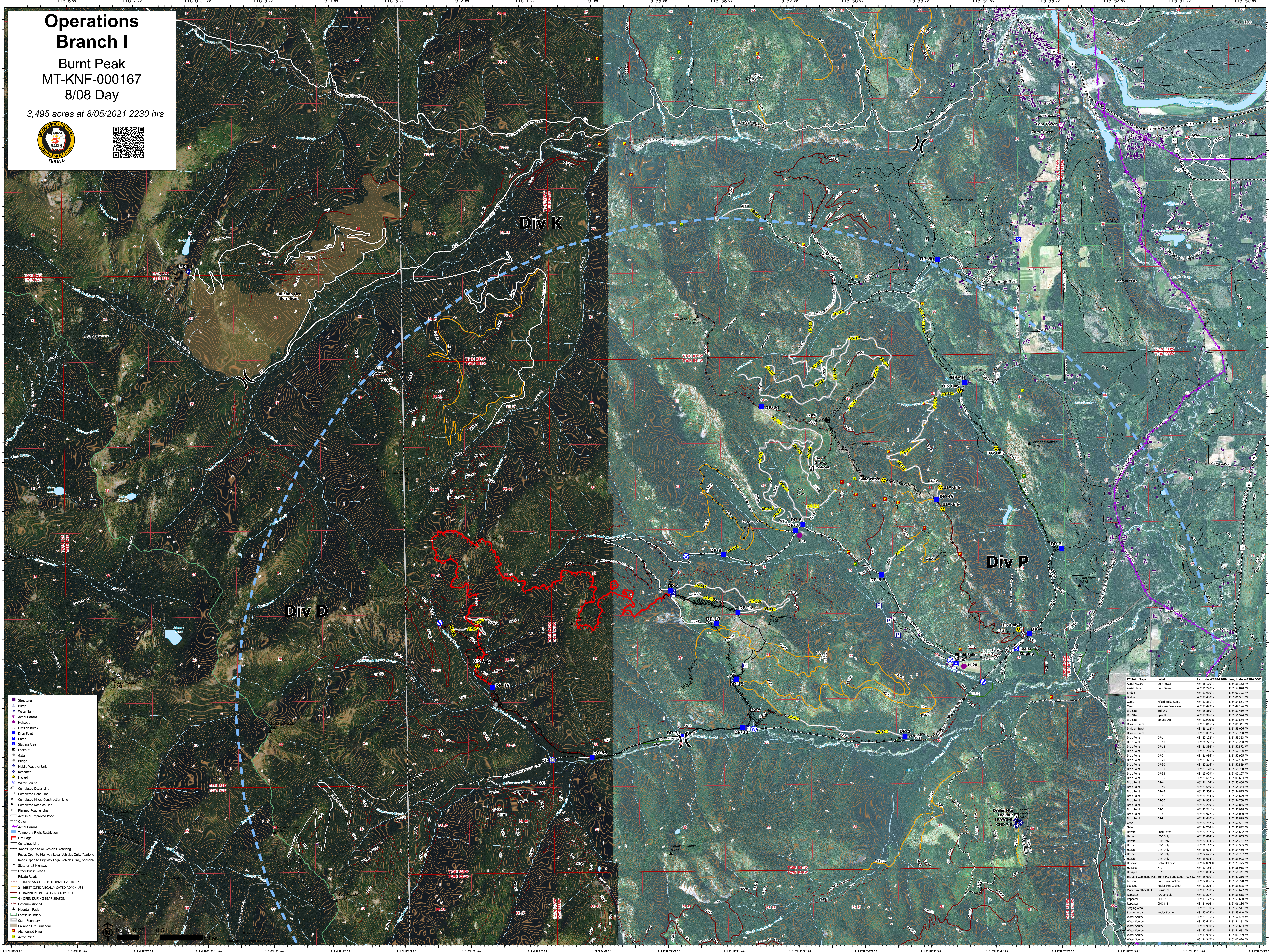


# Operations Branch I

Burnt Peak  
MT-KNF-000167  
8/08 Day

3,495 acres at 8/05/2021 2230 hrs



- Structures
- Pump
- Water Tank
- Aerial Hazard
- Helipad
- Division Break
- Drop Point
- Camp
- Staging Area
- Lookout
- Gate
- Bridge
- Mobile Weather Unit
- Repeater
- Hazard
- Water Source
- Completed Door Line
- Completed Hand Line
- Completed Mixed Construction Line
- Completed Road as Line
- Planned Road as Line
- Access or Improved Road
- Other
- Aerial Hazard
- Temporary Flight Restriction
- Fire Edge
- Contained Line
- Roads Open to All Vehicles, Yearling
- Roads Open to Highway Legal Vehicles Only, Yearling
- Roads Open to Highway Legal Vehicles Only, Seasonal
- State or US Highway
- Other Public Roads
- Private Roads
- 1 - IMPASSIBLE TO MOTORIZED VEHICLES
- 2 - RESTRICTED/LEGALLY GATED ADMIN USE
- 3 - BARRIERED/LEGALLY NO ADMIN USE
- 4 - OPEN DURING BEAR SEASON
- Decommissioned
- Mountain Peak
- Forest Boundary
- State Boundary
- Catalina Fire Burn Scar
- Abandoned Mine
- Active Mine

FC Point Type	Label	Latitude	Longitude	Length	Width	DOH
Aerial Hazard	Com Tower	48° 26.170' N	115° 53.132' W			
Aerial Hazard	Com Tower	48° 26.200' N	115° 52.840' W			
Bridge		48° 26.480' N	115° 01.581' W			
Camp	Field Site Camp	48° 20.835' N	115° 54.561' W			
Camp	Window Bear Camp	48° 25.499' N	115° 49.390' W			
Dip Site	Bull Dip	48° 15.800' N	115° 51.410' W			
Dip Site	Spot Dip	48° 25.970' N	115° 56.210' W			
Dip Site	Spouce Dip	48° 17.900' N	115° 59.594' W			
Division Break		48° 21.815' N	115° 05.341' W			
Division Break		48° 26.122' N	115° 55.000' W			
Drop Point	DP-1	48° 20.892' N	115° 58.730' W			
Drop Point	DP-10	48° 21.275' N	115° 58.000' W			
Drop Point	DP-12	48° 21.384' N	115° 57.872' W			
Drop Point	DP-15	48° 25.700' N	115° 53.900' W			
Drop Point	DP-2	48° 21.986' N	115° 52.925' W			
Drop Point	DP-20	48° 23.473' N	115° 57.466' W			
Drop Point	DP-30	48° 26.248' N	115° 53.020' W			
Drop Point	DP-31	48° 26.128' N	115° 58.738' W			
Drop Point	DP-33	48° 26.028' N	115° 02.370' W			
Drop Point	DP-35	48° 26.657' N	115° 01.634' W			
Drop Point	DP-4	48° 21.124' N	115° 53.630' W			
Drop Point	DP-45	48° 23.689' N	115° 54.560' W			
Drop Point	DP-46	48° 23.504' N	115° 54.823' W			
Drop Point	DP-5	48° 21.740' N	115° 56.570' W			
Drop Point	DP-50	48° 26.438' N	115° 54.700' W			
Drop Point	DP-6	48° 22.289' N	115° 56.865' W			
Drop Point	DP-7	48° 22.211' N	115° 56.570' W			
Drop Point	DP-8	48° 21.077' N	115° 58.800' W			
Drop Point	DP-9	48° 21.610' N	115° 58.890' W			
Gate		48° 26.787' N	115° 53.311' W			
Gate	Sharp Patch	48° 24.730' N	115° 55.820' W			
Hazard	UTV Only	48° 20.874' N	115° 01.853' W			
Hazard	UTV Only	48° 22.404' N	115° 54.731' W			
Hazard	UTV Only	48° 21.122' N	115° 53.800' W			
Hazard	UTV Only	48° 23.604' N	115° 54.400' W			
Hazard	UTV Only	48° 23.825' N	115° 54.782' W			
Hazard	UTV Only	48° 23.814' N	115° 53.800' W			
Helibase	Libby Helibase	48° 17.059' N	115° 29.423' W			
Helipad	H-1	48° 21.914' N	115° 56.570' W			
Helipad	H-20	48° 20.804' N	115° 54.441' W			
Incident Command Post	Burnt Peak and South Peak ICP	48° 25.819' N	115° 49.218' W			
Lookout	Car Drive Lookout	48° 23.828' N	115° 54.728' W			
Lookout	Keeler Mtn Lookout	48° 19.276' N	115° 53.875' W			
Mobile Weather Unit	Shaw's	48° 19.280' N	115° 53.877' W			
Repeater	A-1 Link 46	48° 18.207' N	115° 53.817' W			
Repeater	CHD 7 B	48° 19.177' N	115° 53.880' W			
Repeater	CHD 8 B	48° 18.914' N	115° 56.591' W			
Staging Area	Keeler Staging	48° 25.130' N	115° 53.111' W			
Staging Area	Keeler Staging	48° 20.975' N	115° 53.840' W			
Water Source		48° 21.980' N	115° 53.554' W			
Water Source		48° 20.643' N	115° 54.151' W			
Water Source		48° 21.980' N	115° 53.554' W			
Water Source		48° 20.866' N	115° 54.651' W			
Water Source		48° 19.809' N	115° 00.700' W			
Water Source		48° 21.107' N	115° 02.400' W			