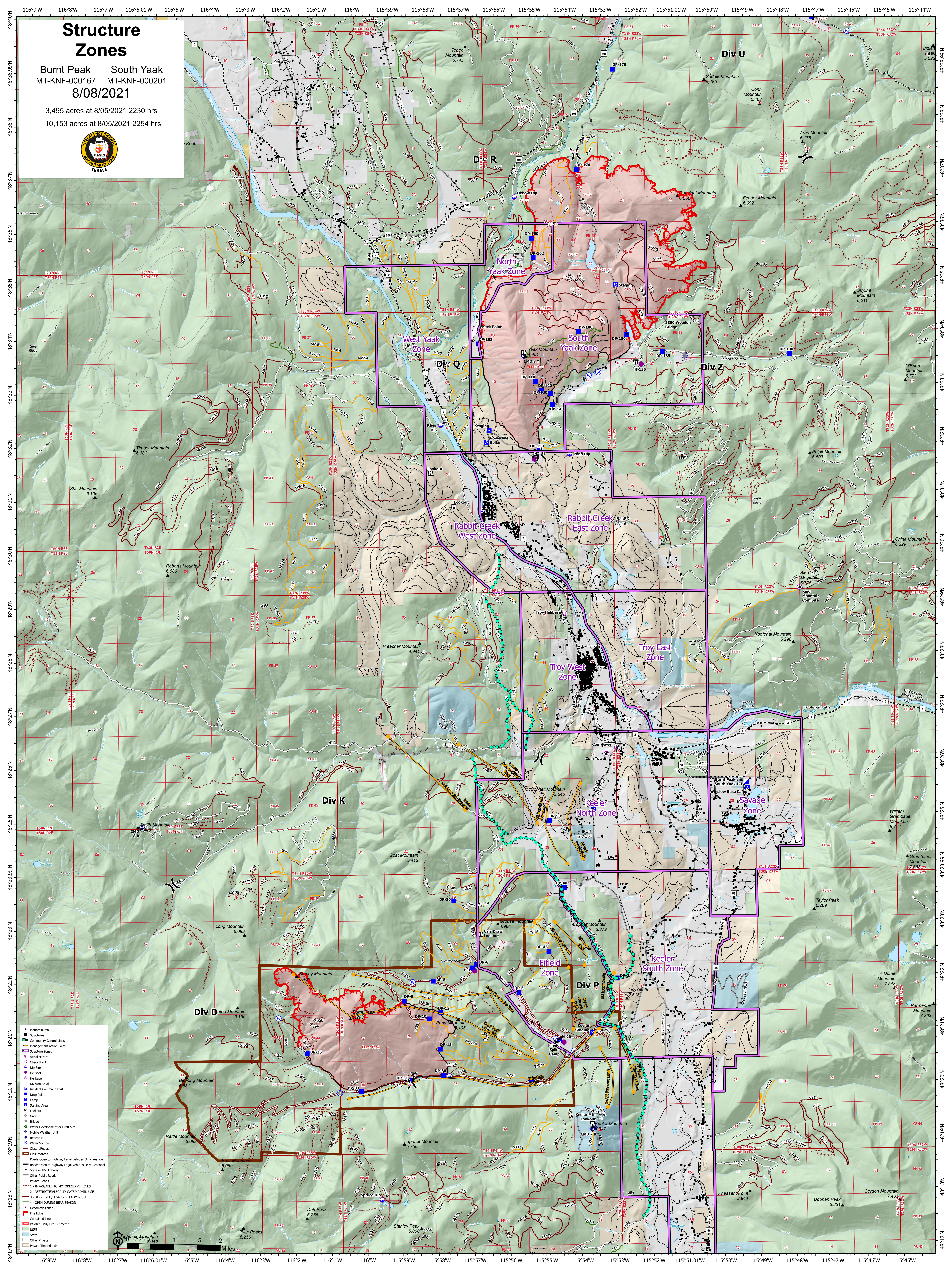


Structure Zones

Burnt Peak South Yaak
MT-KNF-000167 MT-KNF-000201
8/08/2021

3,495 acres at 8/05/2021 2230 hrs
10,153 acres at 8/05/2021 2254 hrs



- ▲ Mountain Peak
- Structures
- Community Control Lines
- Management Action Point
- Structure Zones
- Aerial Hazard
- Check Point
- Dip Site
- Helipad
- Helibase
- Incident Command Post
- Drop Point
- Camp
- Staging Area
- Lookout
- Gate
- Bridge
- Water Development or Draft Site
- Mobile Weather Unit
- Repeater
- State
- Closure/Roads
- Closure/Areas
- Roads Open to Highway Legal Vehicles Only, Yearlong
- Roads Open to Highway Legal Vehicles Only, Seasonal
- State or US Highway
- Other Public Roads
- Private Roads
- 1 - RESPONSIBLE TO MOTORIZED VEHICLES
- 2 - RESTRICTED/LEGALLY GATED ADMIN USE
- 3 - BARRIERED/LEGALLY NO ADMIN USE
- 4 - OPEN DURING BEAR SEASON
- Decommissioned
- Contained Line
- Wildfire Daily Fire Perimeter
- USFS
- State
- Other Private
- Private Timberlands

