

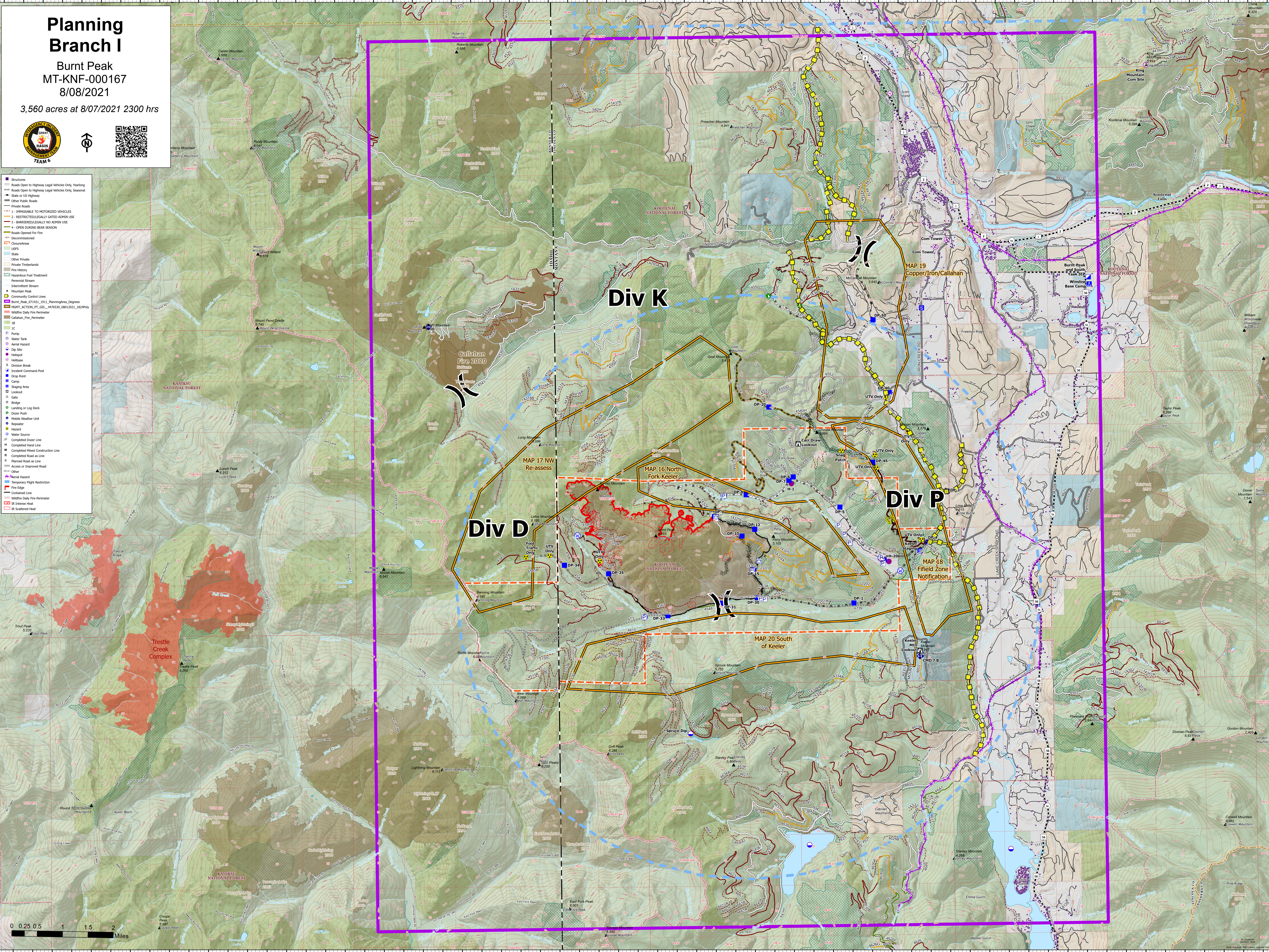
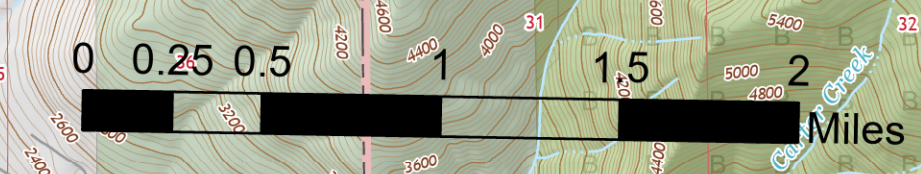
Planning Branch I

Burnt Peak
MT-KNF-000167
8/08/2021

3,560 acres at 8/07/2021 2300 hrs



- Structures
- Roads Open to Highway Legal Vehicles Only, Yearling
- Roads Open to Highway Legal Vehicles Only, Seasonal
- State or US Highway
- Other Public Roads
- Private Roads
- 1 - RESPONSIBLE TO MOTORIZED VEHICLES
- 2 - RESTRICTED/LEGALLY GATED ADMIN USE
- 3 - BARRIERS/LEGALLY NO ADMIN USE
- 4 - OPEN DURING BURN SEASON
- Roads Opened For Fire
- Decommissioned
- Closure/Access
- USFS
- State
- Other Private
- Private Timberlands
- Fire History
- Hazardous Fuel Treatment
- Perennial Stream
- Intermittent Stream
- Mountain Peak
- Community Control Lines
- Burnt Peak 07/421_1911_PlanningArea_Degrees
- MAP ACTION #7 GIS_443030_08/12/21_1424194
- Wildfire Daily Fire Perimeter
- Callahan_Fire_Perimeter
- IB
- IC
- Pump
- Water Tank
- Aerial Hazard
- Dip Site
- Hillspot
- Hillbase
- Division Break
- Incident Command Post
- Drop Point
- Camp
- Staging Area
- Lookout
- Gate
- Bridge
- Landing or Log Deck
- Dozer Push
- Mobile Weather Unit
- Reporter
- Hazard
- Water Source
- Completed Dozer Line
- H
- Completed Hand Line
- M
- Completed Mixed Construction Line
- R
- Completed Road as Line
- Hatched Road as Line
- Access or Improved Road
- Other
- Mental Hazard
- Temporary Flight Restriction
- Fire Edge
- Contained Line
- Wildfire Daily Fire Perimeter
- IR Intense Heat
- IR Scattered Heat



Div D

Div K

Div P

Callahan Fire 2020

MAP 19
Copper/Iron/Callahan

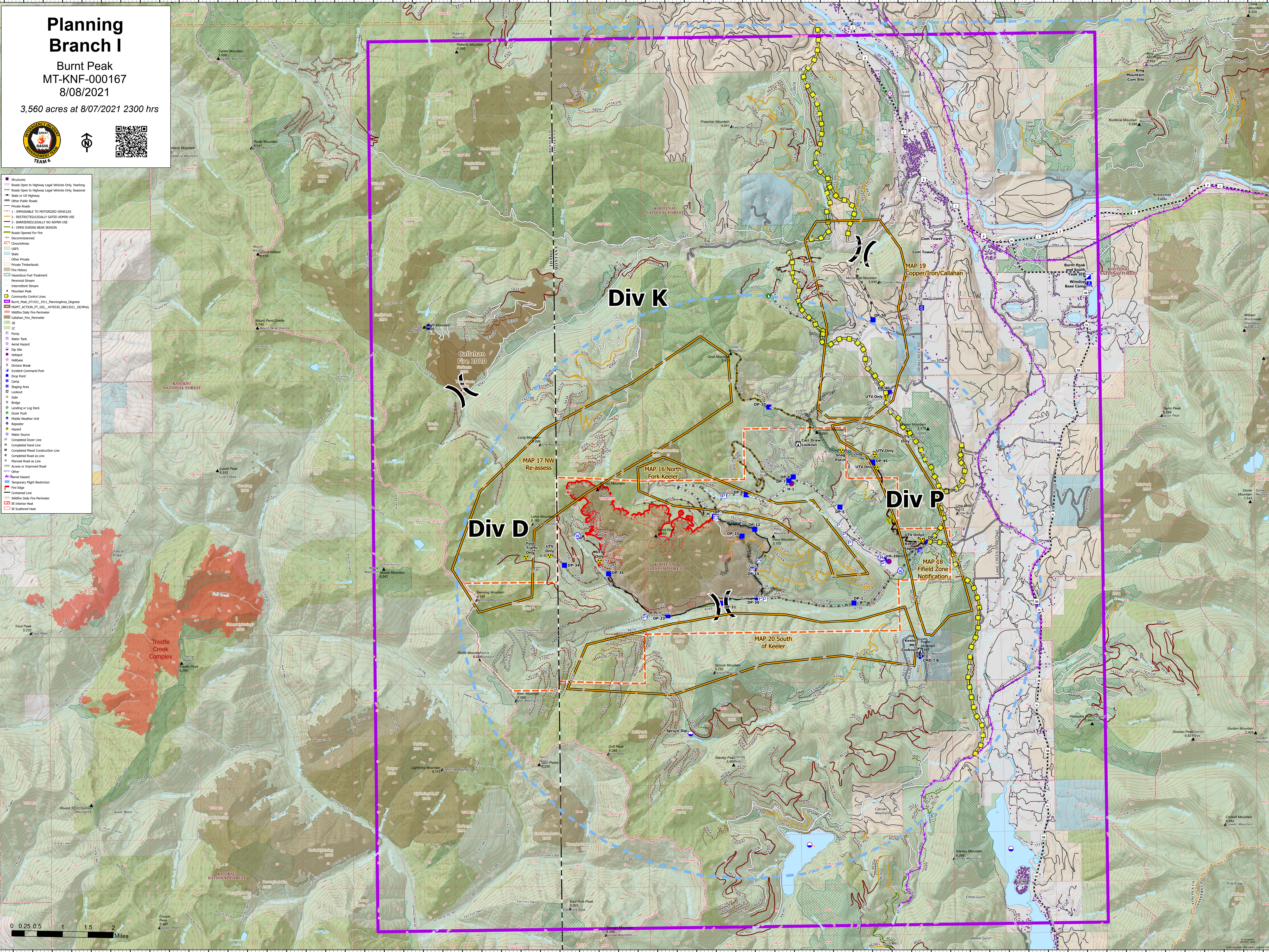
Burnt Peak
and South
Peak TEP

MAP 17 NW
Re-assess

MAP 16 North
Fork Keeler

MAP 18
Field Zone
Notification

MAP 20 South
of Keeler



116°17'W 116°16'W 116°15'W 116°14'W 116°13'W 116°12'W 116°11'W 116°10'W 116°9'W 116°8'W 116°7'W 116°6.01'W 116°5'W 116°4'W 116°3'W 116°2'W 116°1'W 116°W 115°59'W 115°58'W 115°57'W 115°56'W 115°55'W 115°54'W 115°53'W 115°52'W 115°51.01'W 115°50'W 115°49'W 115°48'W 115°47'W 115°46'W 115°45'W

48°30'N 48°29'N 48°28'N 48°27'N 48°26'N 48°25'N 48°24'N 48°23.99'N 48°23'N 48°22'N 48°21'N 48°20'N 48°19'N 48°18'N 48°17'N 48°16'N 48°15'N