

Briefing Branch I
Burnt Peak
 MT-KNF-000167
 8/08/2021
 3,560 acres at 8/07/2021 2300 hrs



Div K

Div D

Div P

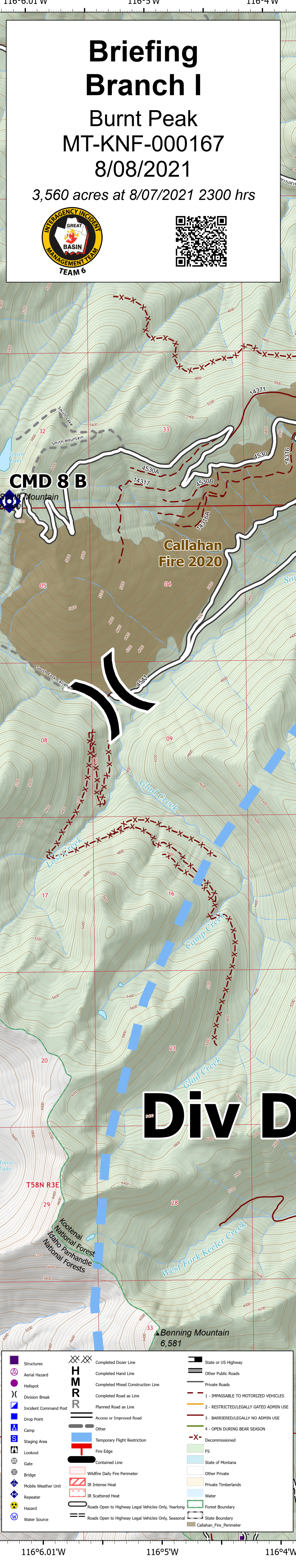
	Structure		Completed Duster Line		State or US Highway
	Aerial Hazard		Completed Hand Line		Other Public Roads
	Helipad		Completed Hand Construction Line		Private Roads
	Division Break		Planned Road as Line		1 - IMPASSIBLE TO MOTORIZED VEHICLES
	Incident Command Post		Access or Improved Road		2 - RESTRICTED TO LEGALLY GATED ADHOC USE
	Camp		Other		3 - BARBERED/LEGALLY NO ADHOC USE
	Staging Area		Temporary Flight Restriction		4 - OPEN DURING BEAR SEASON
	Lookout		Fire Emitter		Decommissioned
	Gate		Fire Permit		Fire
	Hazard		Hazardous Daily Fire Permit		State of Phospor
	Weather Unit		Hazardous Heat		Other Phospor
	Hazard		Hazardous Heat		Private Timberlands
	Water Source		Roads Open to Highway Legal Vehicles Only, Working		Water
			Roads Open to Highway Legal Vehicles Only, Seasonal		Fire Permit
			Roads Open to Highway Legal Vehicles Only, Seasonal		Callahan, Fire, Permit

0 0.25 0.5 Miles

116°6.01'W 116°5'W 116°4'W 116°3'W 116°2'W 116°1'W 116°W 115°59'W 115°58'W 115°57'W 115°56'W 115°55'W 115°54'W 115°53'W 115°52'W 115°51.01'W 115°50'W

116°6.01'W 116°5'W 116°4'W 116°3'W 116°2'W 116°1'W 116°W 115°59'W 115°58'W 115°57'W 115°56'W 115°55'W 115°54'W 115°53'W 115°52'W 115°51.01'W 115°50'W

48°27'N 48°26'N 48°25'N 48°24'N 48°23'N 48°22'N 48°21'N 48°20'N 48°19'N



48°27'N 48°26'N 48°25'N 48°24'N 48°23'N 48°22'N 48°21'N 48°20'N 48°19'N