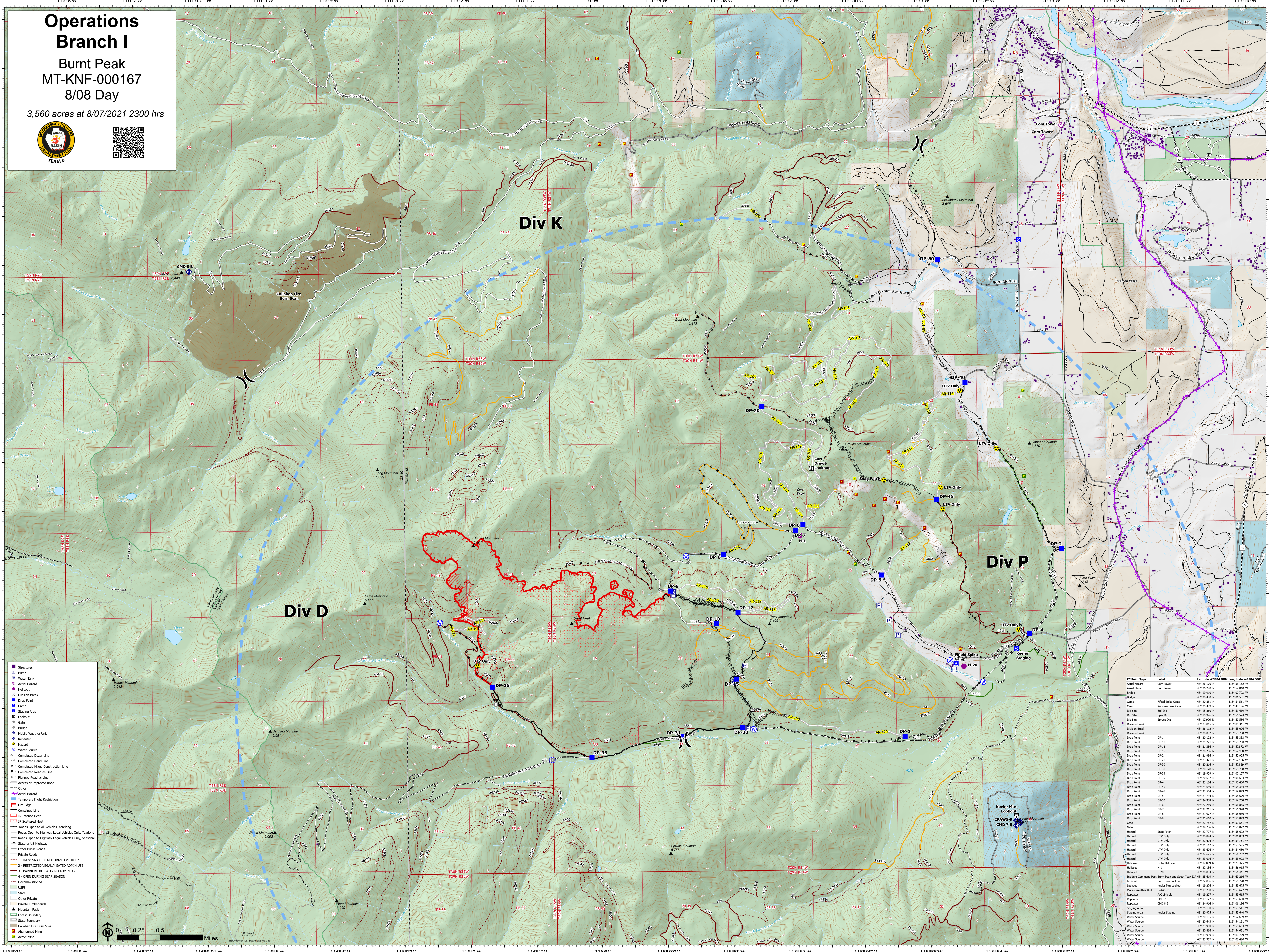


Operations Branch I

Burnt Peak
MT-KNF-000167
8/08 Day

3,560 acres at 8/07/2021 2300 hrs



- Structures
- Pump
- Water Tank
- Aerial Hazard
- Helipoint
- Division Break
- Drop Point
- Camp
- Staging Area
- Lookout
- Gate
- Bridge
- Mobile Weather Unit
- Repeater
- Hazard
- Water Source
- Completed Dozer Line
- Completed Hand Line
- Completed Hand Construction Line
- Completed Road as Line
- Planned Road as Line
- Access or Improved Road
- Other
- Aerial Hazard
- Temporary Flight Restriction
- Fire Edge
- Contained Line
- IR Intense Heat
- IR Scattered Heat
- Roads Open to All Vehicles, Yearling
- Roads Open to Highway Legal Vehicles Only, Yearling
- Roads Open to Highway Legal Vehicles Only, Seasonal
- State or US Highway
- Other Public Roads
- Private Roads
- INACCESSIBLE TO MOTORIZED VEHICLES
- RESTRICTED/LEGALLY GATED ADMIN USE
- BARRIERED/LEGALLY NO ADMIN USE
- OPEN DURING BEAR SEASON
- Decommissioned
- USFS
- State
- Other Private
- Private Timberlands
- Mountain Peak
- Forest Boundary
- State Boundary
- Callahan Fire Burn Scar
- Abandoned Mine
- Active Mine

| FC Point Type | Label | Latitude | Longitude |
|-----------------------|-------------------------------|---------------|----------------|
| Aerial Hazard | Com Tower | 48° 26.170' N | 115° 53.137' W |
| Aerial Hazard | Com Tower | 48° 26.200' N | 115° 52.940' W |
| Bridge | Field Spike Camp | 48° 26.800' N | 115° 54.561' W |
| Bridge | Window Bee Camp | 48° 26.899' N | 115° 54.561' W |
| Camp | But Dip | 48° 15.860' N | 115° 51.439' W |
| Dip Site | Spot Dip | 48° 15.976' N | 115° 56.534' W |
| Dip Site | Service Dip | 48° 17.906' N | 115° 59.584' W |
| Division Break | DP-1 | 48° 23.815' N | 115° 59.541' W |
| Division Break | DP-2 | 48° 23.122' N | 115° 59.000' W |
| Drop Point | DP-1 | 48° 20.692' N | 115° 58.730' W |
| Drop Point | DP-10 | 48° 26.002' N | 115° 55.521' W |
| Drop Point | DP-11 | 48° 21.273' N | 115° 58.000' W |
| Drop Point | DP-12 | 48° 21.384' N | 115° 57.872' W |
| Drop Point | DP-13 | 48° 26.705' N | 115° 52.600' W |
| Drop Point | DP-2 | 48° 21.986' N | 115° 52.923' W |
| Drop Point | DP-20 | 48° 23.471' N | 115° 57.466' W |
| Drop Point | DP-30 | 48° 26.246' N | 115° 57.830' W |
| Drop Point | DP-31 | 48° 26.128' N | 115° 58.738' W |
| Drop Point | DP-32 | 48° 24.028' N | 115° 58.327' W |
| Drop Point | DP-35 | 48° 20.657' N | 115° 61.634' W |
| Drop Point | DP-4 | 48° 23.124' N | 115° 53.630' W |
| Drop Point | DP-40 | 48° 23.689' N | 115° 54.564' W |
| Drop Point | DP-45 | 48° 23.504' N | 115° 54.823' W |
| Drop Point | DP-5 | 48° 23.744' N | 115° 54.579' W |
| Drop Point | DP-50 | 48° 24.038' N | 115° 54.760' W |
| Drop Point | DP-6 | 48° 22.269' N | 115° 56.863' W |
| Drop Point | DP-7 | 48° 21.211' N | 115° 56.378' W |
| Drop Point | DP-8 | 48° 21.977' N | 115° 58.000' W |
| Drop Point | DP-9 | 48° 21.607' N | 115° 58.899' W |
| Gate | Gate | 48° 23.767' N | 115° 53.517' W |
| Hazard | Snag Patch | 48° 20.874' N | 115° 61.853' W |
| Hazard | UTV Only | 48° 20.894' N | 115° 54.731' W |
| Hazard | UTV Only | 48° 21.122' N | 115° 53.807' W |
| Hazard | UTV Only | 48° 23.604' N | 115° 54.400' W |
| Hazard | UTV Only | 48° 23.625' N | 115° 54.762' W |
| Hazard | UTV Only | 48° 23.634' N | 115° 53.807' W |
| Helibase | Lobby Helibase | 48° 17.099' N | 115° 28.423' W |
| Helipoint | H-1 | 48° 24.024' N | 115° 56.317' W |
| Helipoint | H-2 | 48° 20.804' N | 115° 54.441' W |
| Incident Command Post | Burnt Peak and South Yank ICP | 48° 25.619' N | 115° 49.218' W |
| Lookout | Keeler Mtn Lookout | 48° 19.276' N | 115° 53.673' W |
| Lookout | Keeler Mtn Lookout | 48° 19.280' N | 115° 53.677' W |
| Mobile Weather Unit | AWC Link 6d | 48° 19.177' N | 115° 53.680' W |
| Repeater | CHD 7 B | 48° 24.024' N | 115° 56.317' W |
| Repeater | CHD 8 B | 48° 25.130' N | 115° 53.311' W |
| Staging Area | Keeler Staging | 48° 20.975' N | 115° 53.640' W |
| Water Source | Water Source | 48° 20.647' N | 115° 54.551' W |
| Water Source | Water Source | 48° 21.960' N | 115° 58.800' W |
| Water Source | Water Source | 48° 20.866' N | 115° 54.651' W |
| Water Source | Water Source | 48° 19.809' N | 115° 60.729' W |
| Water Source | Water Source | 48° 19.317' N | 115° 62.007' W |

