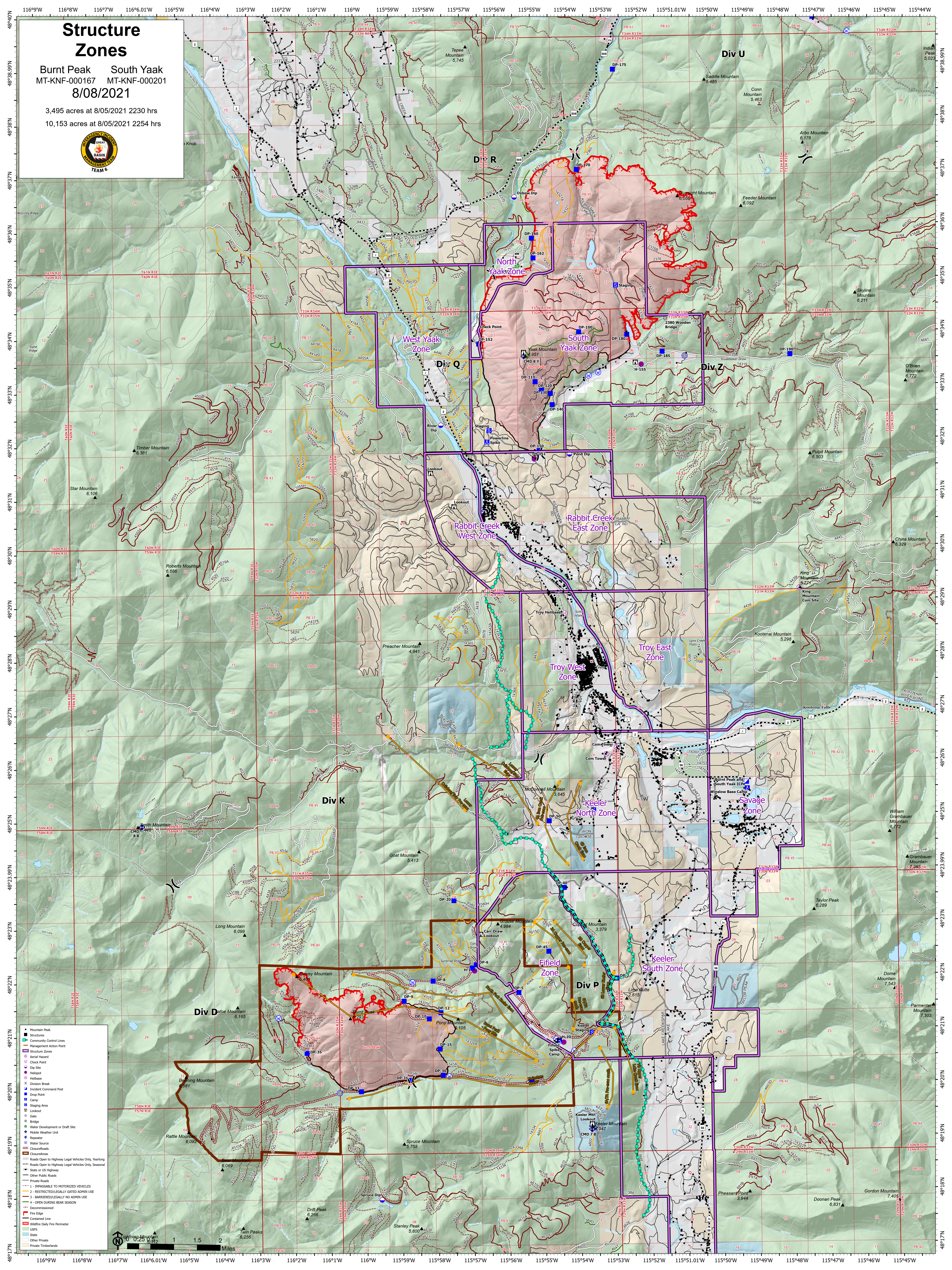


Structure Zones

Burnt Peak South Yaak
MT-KNF-000167 MT-KNF-000201
8/08/2021

3,495 acres at 8/05/2021 2230 hrs
10,153 acres at 8/05/2021 2254 hrs



- ▲ Mountain Peak
 - Structures
 - Community Control Lines
 - Management Action Point
 - Structure Zones
 - Aerial Hazard
 - Check Point
 - Dip Site
 - Helibase
 - Helipoint
 - Incident Command Post
 - Drop Point
 - Camp
 - Staging Area
 - Lookout
 - Gate
 - Bridge
 - Water Development or Draft Site
 - Mobile Weather Unit
 - Repeater
 - State
 - Other Private
 - Private Timbers
- Legend for road types:
- Roads Open to Highway Legal Vehicles Only, Yearlong
 - Roads Open to Highway Legal Vehicles Only, Seasonal
 - State or US Highway
 - Other Public Roads
 - Private Roads
 - 1 - INACCESSIBLE TO MOTORIZED VEHICLES
 - 2 - RESTRICTED/LEGALLY GATED ADMIN USE
 - 3 - BARRIERED/LEGALLY NO ADMIN USE
 - 4 - OPEN DURING BEAR SEASON
 - Decommissioned
 - Contained Line
 - Wildfire Daily Fire Perimeter
 - USFS
 - Other Private
 - Private Timbers

