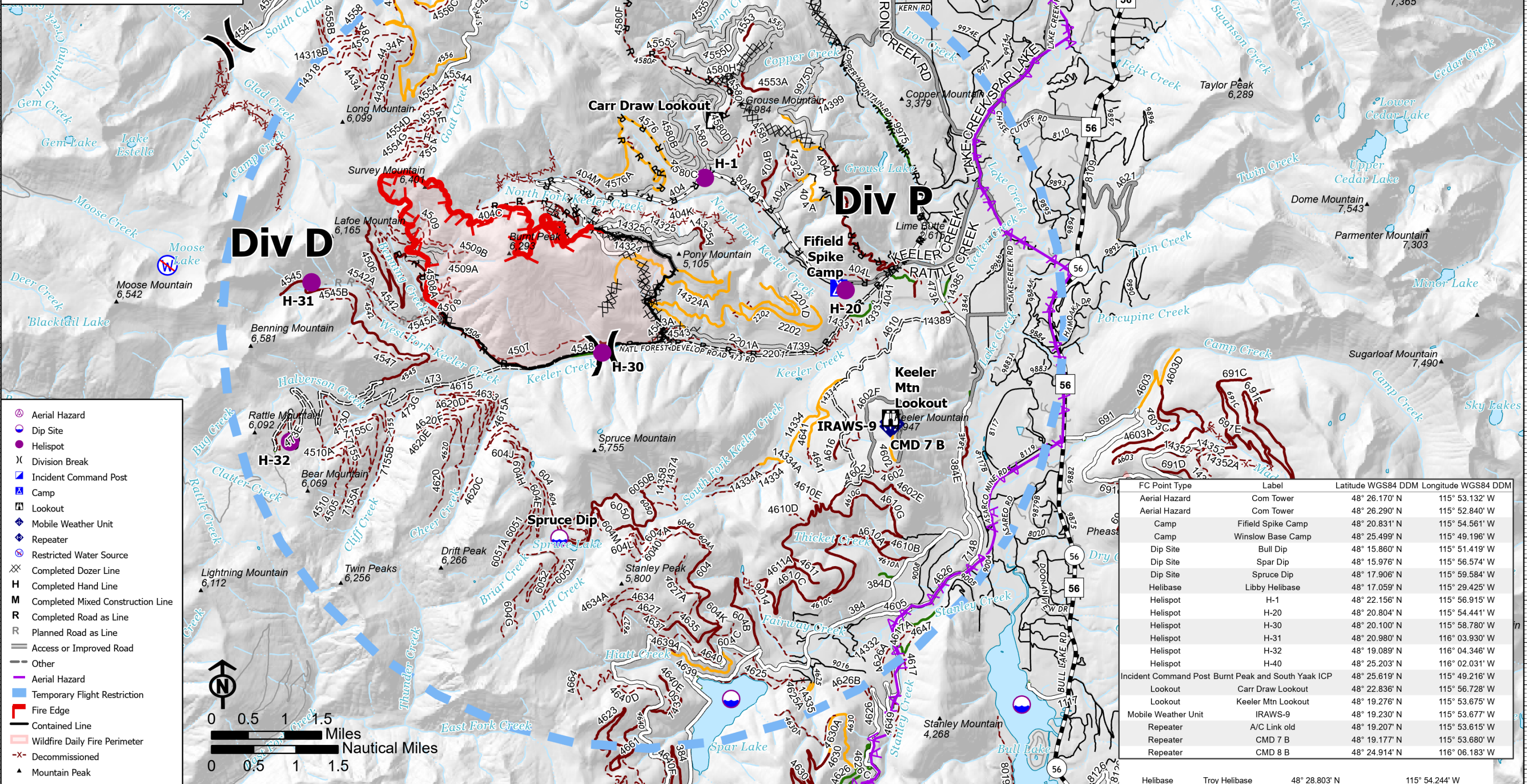
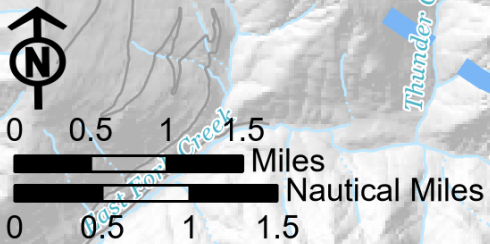


Air Ops
Burnt Peak
MT-KNF-000167
8/09/2021
 3,560 acres at 8/07/2021 2300 hrs





- Aerial Hazard
- Dip Site
- Helispot
- Division Break
- Incident Command Post
- Camp
- Lookout
- Mobile Weather Unit
- Repeater
- Restricted Water Source
- Completed Dozer Line
- Completed Hand Line
- Completed Mixed Construction Line
- Completed Road as Line
- Planned Road as Line
- Access or Improved Road
- Other
- Aerial Hazard
- Temporary Flight Restriction
- Fire Edge
- Contained Line
- Wildfire Daily Fire Perimeter
- Decommissioned
- Mountain Peak



FC Point Type	Label	Latitude WGS84 DDM	Longitude WGS84 DDM
Aerial Hazard	Com Tower	48° 26.170' N	115° 53.132' W
Aerial Hazard	Com Tower	48° 26.290' N	115° 52.840' W
Camp	Fifield Spike Camp	48° 20.831' N	115° 54.561' W
Camp	Winslow Base Camp	48° 25.499' N	115° 49.196' W
Dip Site	Bull Dip	48° 15.860' N	115° 51.419' W
Dip Site	Spar Dip	48° 15.976' N	115° 56.574' W
Dip Site	Spruce Dip	48° 17.906' N	115° 59.584' W
Helibase	Libby Helibase	48° 17.059' N	115° 29.425' W
Helispot	H-1	48° 22.156' N	115° 56.915' W
Helispot	H-20	48° 15.860' N	115° 54.441' W
Helispot	H-30	48° 20.100' N	115° 58.780' W
Helispot	H-31	48° 20.980' N	116° 03.930' W
Helispot	H-32	48° 19.089' N	116° 04.346' W
Helispot	H-40	48° 25.203' N	116° 02.031' W
Incident Command Post	Burnt Peak and South Yaak ICP	48° 25.619' N	115° 49.216' W
Lookout	Carr Draw Lookout	48° 22.836' N	115° 56.728' W
Lookout	Keeler Mtn Lookout	48° 19.276' N	115° 53.675' W
Mobile Weather Unit	IRAWS-9	48° 19.230' N	115° 53.677' W
Repeater	A/C Link old	48° 19.207' N	115° 53.615' W
Repeater	CMD 7 B	48° 19.177' N	115° 53.680' W
Repeater	CMD 8 B	48° 24.914' N	116° 06.183' W

Helibase Troy Helibase 48° 28.803' N 115° 54.244' W