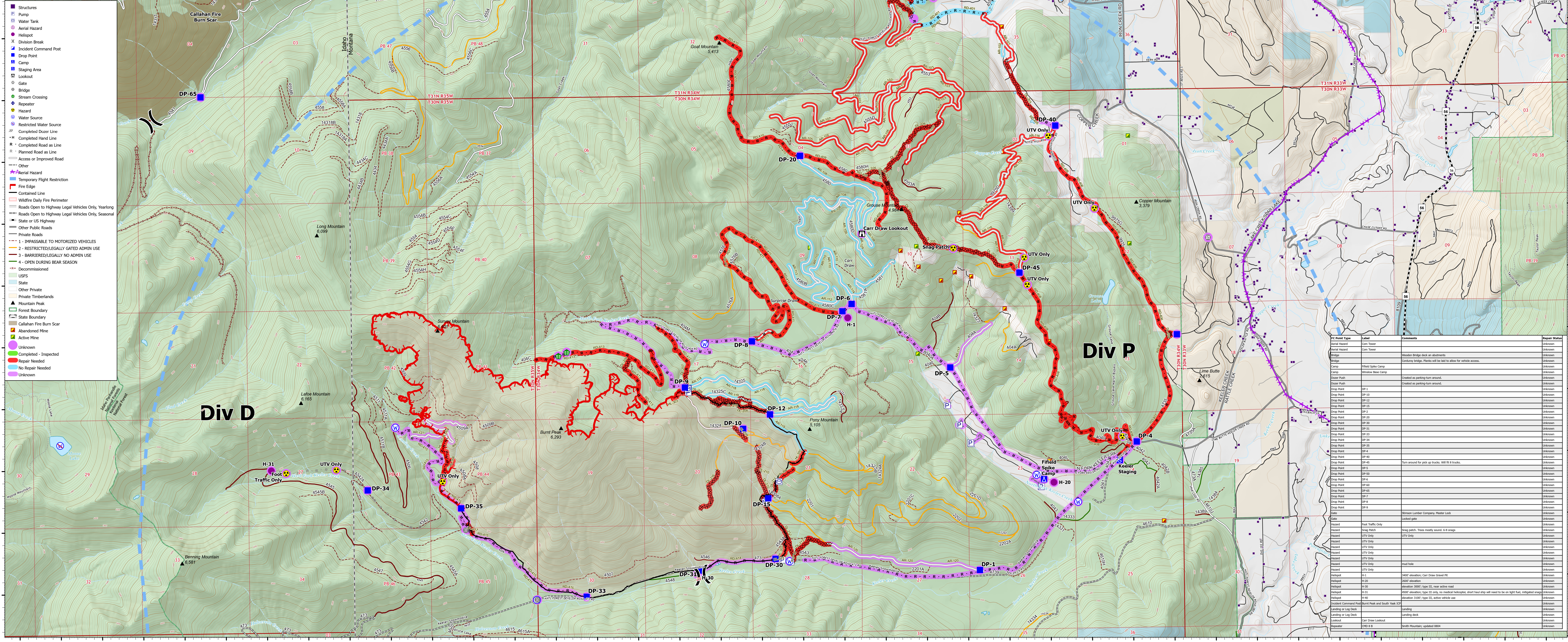


Suppression Repair Branch I

Burnt Peak
MT-KNF-000167
8/10 Day
3,583 acres at 8/08/2021 2125 hrs



- Structures
- Pump
- Water Tank
- Aerial Hazard
- Hillside
- Division Break
- Incident Command Post
- Drop Point
- Camp
- Staging Area
- Lockout
- Gate
- Bridge
- Stream Crossing
- Repeater
- Hazard
- Water Source
- Restricted Water Source
- Completed Dozer Line
- Completed Hand Line
- Completed Road as Line
- Planned Road as Line
- Access or Improved Road
- Other
- Facial Hazard
- Temporary Flight Restriction
- Fire Edge
- Contained Line
- Weather Daily Fire Perimeter
- Roads Open to Highway Legal Vehicles Only, Yearling
- Roads Open to Highway Legal Vehicles Only, Seasonal
- State or US Highway
- Open Public Roads
- Private Roads
- 1 - IMPASSABLE TO MOTORIZED VEHICLES
- 2 - RESTRICTED/LEGALLY GATED ADMIN USE
- 3 - BARRIQUADED/LEGALLY NO ADMIN USE
- 4 - OPEN DURING BEAR SEASON
- Decommissioned
- USFS
- State
- Other Private
- Private Timberlands
- Mountain Peak
- Forest Boundary
- State Boundary
- Callahan Fire Burn Scar
- Abandoned Mine
- Active Mine
- Unknown
- Completed - Inspected
- Repair Needed
- No Repair Needed
- Unknown



FC Line Type	Label	Repair Status	Comments	Repair Comments
Access or Improved Road	AR-100	Repair Needed	Masticated existing road (barren) heavily masticated. Small blem in spots from masticated tracks on south side of road.	
Access or Improved Road	AR-101	Repair Needed	Existing road that was improved with mastication.	Existing private road that was improved with mastication. No dozer blade dropped on this section. No repair needed.
Access or Improved Road	AR-102	No Repair Needed	No blade dropped, opened an existing private road with some limbing work.	Existing road opened with some limbing work.
Access or Improved Road	AR-103	Repair Needed	existing road, mastication both sides 30'	
Access or Improved Road	AR-104	Repair Needed	existing road, mastication both sides 30'	
Access or Improved Road	AR-105	Repair Needed	existing road, mastication both sides 30'	
Access or Improved Road	AR-106	Repair Needed	existing road, mastication both sides 30'	
Access or Improved Road	AR-107	Repair Needed	existing road but overgrown, not drivable even after heavy mastication both sides 30'	
Access or Improved Road	AR-108	No Repair Needed	for transportation reference, no suppression impacts	
Access or Improved Road	AR-109	No Repair Needed	for transportation reference, no suppression impacts	
Access or Improved Road	AR-110	No Repair Needed	for transportation reference, no suppression impacts	
Access or Improved Road	AR-111	No Repair Needed	for transportation reference, no suppression impacts	
Access or Improved Road	AR-112	No Repair Needed	for transportation reference, no suppression impacts	
Access or Improved Road	AR-113	No Repair Needed	for transportation reference, no suppression impacts	

FC Line Type	Label	Repair Status	Comments	Repair Comments
Access or Improved Road	AR-114	No Repair Needed	for transportation reference, no suppression impacts	
Access or Improved Road	AR-115	Unknown		
Access or Improved Road	AR-116	Repair Needed	Masticated to be open enough for pickup truck access only. Road is very thin thru turn arounds.	
Access or Improved Road	AR-117	Unknown		
Access or Improved Road	AR-118	No Repair Needed	for transportation reference, no suppression impacts	
Access or Improved Road	AR-119	No Repair Needed	for transportation reference, no suppression impacts	
Access or Improved Road	AR-120	Unknown		
Access or Improved Road	AR-121	Unknown		
Completed Dozer Line	DL-200	Repair Needed	Newly constructed dozer line, mastication both side 30'	
Completed Dozer Line	DL-201	Repair Needed	Newly constructed dozer line, mastication both side 30'	
Completed Dozer Line	DL-203	Repair Needed	One blade new doze, then masticated on the west side 30'	
Completed Dozer Line	DL-204	Repair Needed	One blade wide with 30-foot mastication.	
Completed Dozer Line	DL-205	Repair Needed	New dozer line	
Completed Dozer Line	DL-206	Repair Needed	single blade, mastication	

FC Line Type	Label	Repair Status	Comments	Repair Comments
Completed Dozer Line	DL-207	Repair Needed	one blade, mastication 30'	
Completed Dozer Line	DL-208	Repair Needed	New dozer line	
Completed Dozer Line	DL-209	Repair Needed	New dozer line	
Completed Dozer Line	DL-209	Repair Needed	New dozer line	
Completed Hand Line	HL-304	Repair Needed	New dozer line	
Completed Dozer Line	DL-211	Repair Needed	New dozer line	
Completed Dozer Line	DL-212	Repair Needed	New dozer line	
Completed Dozer Line	DL-213	Repair Needed	dozer line on previously closed road	
Completed Dozer Line	DL-214	Repair Needed	New dozer line	
Completed Dozer Line	DL-215	Repair Needed	New dozer line	
Completed Dozer Line	DL-216	Repair Needed	dozer line on previously closed road	
Completed Dozer Line	DL-217	Repair Needed	New dozer line	
Completed Dozer Line	DL-218	Repair Needed	New dozer line	
Completed Hand Line	HL-300	Repair Needed	Line is plumb with a hose lay	

FC Line Type	Label	Repair Status	Comments	Repair Comments
Completed Hand Line	HL-301	Repair Needed		
Completed Hand Line	HL-302	Repair Needed		
Completed Hand Line	HL-303	Repair Needed		
Completed Hand Line	HL-303	Completed - Inspected	30' saw cut with 2' scrape	
Completed Hand Line	HL-304	Repair Needed		
Completed Hand Line	HL-305	Repair Needed		
Completed Hand Line	HL-306	Repair Needed		
Completed Road as Line	RD-400	Unknown	Road with 30' masticator prep.	
Completed Road as Line	RD-401	Unknown	Road with 20' masticator prep.	
Completed Road as Line	RD-402	Unknown	Existing road with 30' masticator prep.	
Completed Road as Line	RD-403	Unknown	Existing road with 30' masticator prep.	
Completed Road as Line	RD-404	Unknown	Road with 20' masticator prep.	
Completed Road as Line	RD-400	Unknown	County Road, mastication	

FC Line Type	Label	Repair Status	Comments	Repair Comments
Completed Road as Line	RD-402	Repair Needed	previously closed road, single blade doze, mastication both sides 30'	
Completed Road as Line	RD-403	No Repair Needed	Existing logging road, dozed and masticated 30 feet both sides	
Completed Road as Line	RD-403	Unknown	Existing logging road, dozed and masticated 30 feet both sides	
Completed Road as Line	RD-404	Repair Needed	Masticated existing road. About 30' feet wide at the start. narrow as it progresses north.	
Completed Road as Line	RD-405	Unknown	One blade on existing private road, then masticated on the west side one boom length.	
Completed Road as Line	RD-406	Repair Needed	same sections previously dozed road, some sections previously mastication both side 30'	
Completed Road as Line	RD-407	Repair Needed	mastication both sides of road 30'	
Completed Road as Line	RD-408	Repair Needed	previously closed road, Road between DP 45 South to new DP accessible by pick up truck. Use only downhill from there. c	
Completed Road as Line	RD-409	Repair Needed	previously closed road opened with doze, prepped	
Completed Road as Line	RD-410	Repair Needed	previously closed road, single blade doze, mastication 30'	
Completed Road as Line	RD-411	Repair Needed	single blade doze, previously closed road, Line completed 7/19/21	
Completed Road as Line	RD-411	Repair Needed	single blade doze, previously closed road, Line completed 7/19/21	
Completed Road as Line	RD-412	Repair Needed	single blade, previously closed road	

FC Line Type	Label	Repair Status	Comments	Repair Comments
Access or Improved Road	AR-122	Unknown		
Access or Improved Road	AR-123	Unknown		
Access or Improved Road	AR-124	Unknown		
Access or Improved Road	AR-125	Unknown		
Access or Improved Road	AR-126	Unknown		
Access or Improved Road	AR-127	Unknown		
Access or Improved Road	AR-128	Unknown		
Access or Improved Road	AR-129	Unknown		
Access or Improved Road	AR-130	Unknown		
Access or Improved Road	AR-131	Unknown		
Access or Improved Road	AR-132	Unknown		
Access or Improved Road	AR-133	Unknown		
Access or Improved Road	AR-134	Unknown		
Access or Improved Road	AR-135	Unknown		
Access or Improved Road	AR-136	Unknown		
Access or Improved Road	AR-137	Unknown		
Access or Improved Road	AR-138	Unknown		
Access or Improved Road	AR-139	Unknown		
Access or Improved Road	AR-140	Unknown		
Access or Improved Road	AR-141	Unknown		
Access or Improved Road	AR-142	Unknown		
Access or Improved Road	AR-143	Unknown		
Access or Improved Road	AR-144	Unknown		
Access or Improved Road	AR-145	Unknown		
Access or Improved Road	AR-146	Unknown		
Access or Improved Road	AR-147	Unknown		
Access or Improved Road	AR-148	Unknown		
Access or Improved Road	AR-149	Unknown		
Access or Improved Road	AR-150	Unknown		
Access or Improved Road	AR-151	Unknown		
Access or Improved Road	AR-152	Unknown		
Access or Improved Road	AR-153	Unknown		
Access or Improved Road	AR-154	Unknown		
Access or Improved Road	AR-155	Unknown		
Access or Improved Road	AR-156	Unknown		
Access or Improved Road	AR-157	Unknown		
Access or Improved Road	AR-158	Unknown		
Access or Improved Road	AR-159	Unknown		
Access or Improved Road	AR-160	Unknown		
Access or Improved Road	AR-161	Unknown		
Access or Improved Road	AR-162	Unknown		
Access or Improved Road	AR-163	Unknown		
Access or Improved Road	AR-164	Unknown		
Access or Improved Road	AR-165	Unknown		
Access or Improved Road	AR-166	Unknown		
Access or Improved Road	AR-167	Unknown		
Access or Improved Road	AR-168	Unknown		
Access or Improved Road	AR-169	Unknown		
Access or Improved Road	AR-170	Unknown		
Access or Improved Road	AR-171	Unknown		
Access or Improved Road	AR-172	Unknown		
Access or Improved Road	AR-173	Unknown		
Access or Improved Road	AR-174	Unknown		
Access or Improved Road	AR-175	Unknown		
Access or Improved Road	AR-176	Unknown		
Access or Improved Road	AR-177	Unknown		
Access or Improved Road	AR-178	Unknown		
Access or Improved Road	AR-179	Unknown		
Access or Improved Road	AR-180	Unknown		
Access or Improved Road	AR-181	Unknown		
Access or Improved Road	AR-182	Unknown		
Access or Improved Road	AR-183	Unknown		
Access or Improved Road	AR-184	Unknown		
Access or Improved Road	AR-185	Unknown		
Access or Improved Road	AR-186	Unknown		
Access or Improved Road	AR-187	Unknown		
Access or Improved Road	AR-188	Unknown		
Access or Improved Road	AR-189	Unknown		
Access or Improved Road	AR-190	Unknown		
Access or Improved Road	AR-191	Unknown		
Access or Improved Road	AR-192	Unknown		
Access or Improved Road	AR-193	Unknown		
Access or Improved Road	AR-194	Unknown		
Access or Improved Road	AR-195	Unknown		
Access or Improved Road	AR-196	Unknown		
Access or Improved Road	AR-197	Unknown		
Access or Improved Road	AR-198	Unknown		
Access or Improved Road	AR-199	Unknown		
Access or Improved Road	AR-200	Unknown		
Access or Improved Road	AR-201	Unknown		
Access or Improved Road	AR-202	Unknown		
Access or Improved Road	AR-203	Unknown		
Access or Improved Road	AR-204	Unknown		
Access or Improved Road	AR-205	Unknown		
Access or Improved Road	AR-206	Unknown		
Access or Improved Road	AR-207	Unknown		
Access or Improved Road	AR-208	Unknown		
Access or Improved Road	AR-209	Unknown		
Access or Improved Road	AR-210	Unknown		
Access or Improved Road	AR-211	Unknown		
Access or Improved Road	AR-212	Unknown		
Access or Improved Road	AR-213	Unknown		
Access or Improved Road	AR-214	Unknown		
Access or Improved Road	AR-215	Unknown		
Access or Improved Road	AR-216	Unknown		
Access or Improved Road	AR-217	Unknown		
Access or Improved Road	AR-218	Unknown		
Access or Improved Road	AR-219	Unknown		
Access or Improved Road	AR-220	Unknown		
Access or Improved Road	AR-221	Unknown		
Access or Improved Road	AR-222	Unknown		
Access or Improved Road	AR-223	Unknown		
Access or Improved Road	AR-224	Unknown		
Access or Improved Road	AR-225	Unknown		
Access or Improved Road	AR-226	Unknown		
Access or Improved Road	AR-227	Unknown		
Access or Improved Road	AR-228	Unknown		
Access or Improved Road	AR-229	Unknown		
Access or Improved Road	AR-230	Unknown		
Access or Improved Road	AR-231	Unknown		
Access or Improved Road	AR-232	Unknown		
Access or Improved Road	AR-233	Unknown		
Access or Improved Road	AR-234	Unknown		
Access or Improved Road	AR-235	Unknown		
Access or Improved Road	AR-236	Unknown		
Access or Improved Road	AR-237	Unknown		
Access or Improved Road	AR-238	Unknown		
Access or Improved Road	AR-239	Unknown		
Access or Improved Road	AR-240	Unknown		
Access or Improved Road	AR-241	Unknown		
Access or Improved Road	AR-242	Unknown		
Access or Improved Road	AR-243	Unknown		
Access or Improved Road	AR-244	Unknown		
Access or Improved Road	AR-245	Unknown		
Access or Improved Road	AR-246	Unknown		
Access or Improved Road	AR-247	Unknown		
Access or Improved Road	AR-248	Unknown		
Access or Improved Road	AR-249	Unknown		
Access or Improved Road	AR-250	Unknown		
Access or Improved Road	AR-251	Unknown		
Access or Improved Road	AR-252	Unknown		
Access or Improved Road	AR-253	Unknown		
Access or Improved Road	AR-254	Unknown		
Access or Improved Road	AR-255	Unknown		
Access or Improved Road	AR-256	Unknown		
Access or Improved Road	AR-257	Unknown		
Access or Improved Road	AR-258	Unknown		
Access or Improved Road	AR-259	Unknown		
Access or Improved Road	AR-260	Unknown		
Access or Improved Road	AR-261	Unknown		
Access or Improved Road	AR-262	Unknown		
Access or Improved Road	AR-263	Unknown		
Access or Improved Road	AR-264	Unknown		
Access or Improved Road	AR-265	Unknown		
Access or Improved Road	AR-266	Unknown		
Access or Improved Road	AR-267	Unknown		
Access or Improved Road	AR-268	Unknown		
Access or Improved Road	AR-269	Unknown		
Access or Improved Road	AR-270	Unknown		
Access or Improved Road	AR-271	Unknown		
Access or Improved Road	AR-272	Unknown		
Access or Improved Road	AR-273	Unknown		
Access or Improved Road	AR-274	Unknown		
Access or Improved Road	AR-275	Unknown		