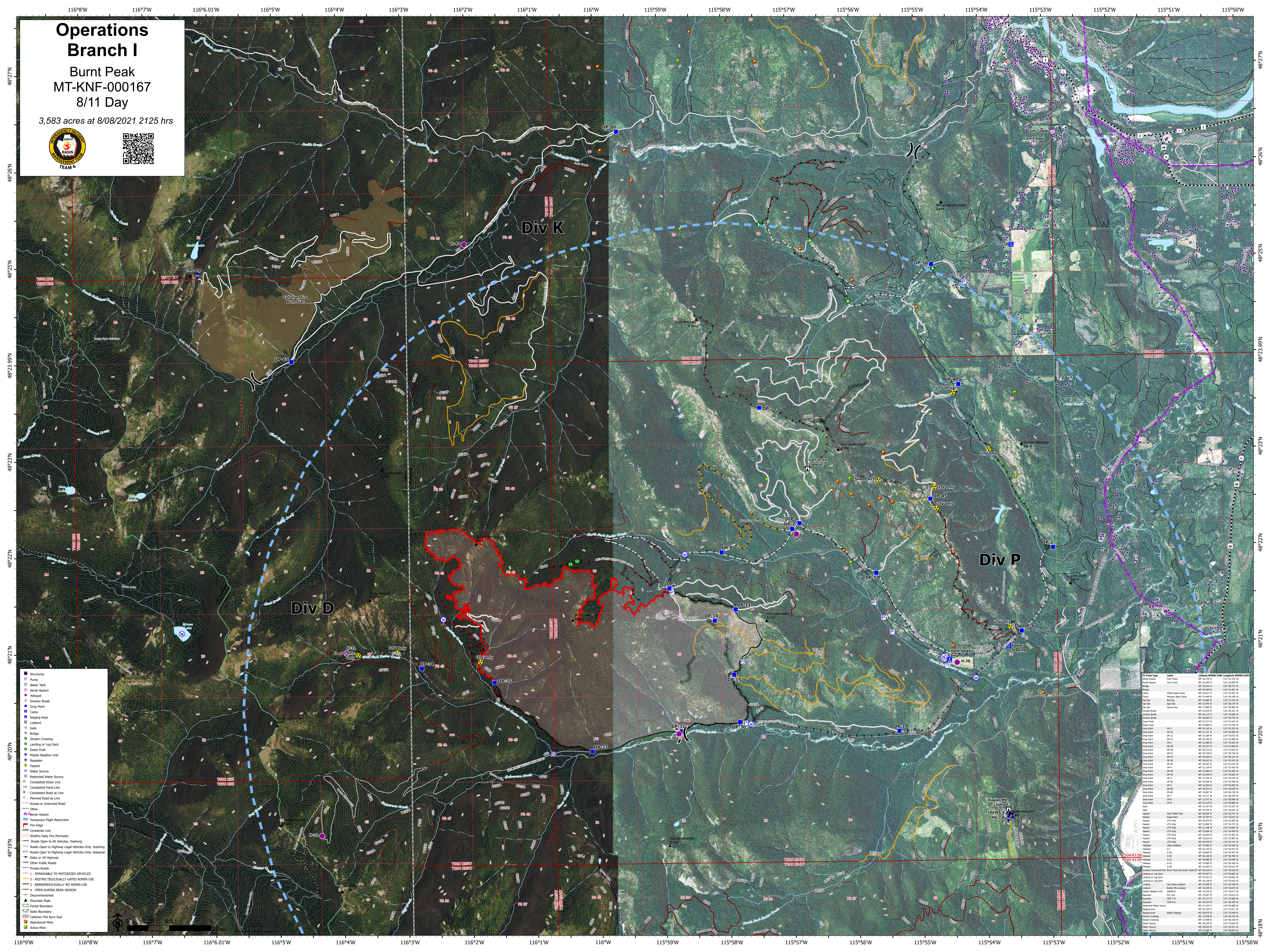


Operations Branch I

Burnt Peak MT-KNF-000167 8/11 Day

3,583 acres at 8/08/2021 2125 hrs



- Structures
- Pump
- Water Tank
- Aerial Hazard
- Helipad
- Division Break
- Drop Point
- Camp
- Staging Area
- Lookout
- Gate
- Bridge
- Stream Crossing
- Landing or Log Deck
- Dozer Push
- Mobile Weather Unit
- Regulator
- Hazard
- Water Source
- Restricted Water Source
- Completed Dozer Line
- H - Completed Hand Line
- R - Planned Road as Line
- R - Planned Road as Line
- Access or Improved Road
- Other
- Aerial Hazard
- Temporary Flight Restriction
- Fire Edge
- Contained Line
- Wildfire Daily Fire Perimeter
- Roads Open to All Vehicles, Yearlong
- Roads Open to Highway Legal Vehicles Only, Yearlong
- Roads Open to Highway Legal Vehicles Only, Seasonal
- State or US Highway
- Other Public Roads
- Private Roads
- 1 - IMPELABLE TO MOTORIZED VEHICLES
- 2 - RESTRICTED/LEGALLY GATED ADMIN USE
- 3 - BARRIRED/LEGALLY NO ADMIN USE
- 4 - OPEN DURING BEAR SEASON
- Decommissioned
- Mountain Peak
- Forest Boundary
- State Boundary
- Cathlamet Fire Burn Scar
- Abandoned Mine
- Active Mine

Drop Point	Lat	Long	Drop Point	Lat	Long
DP-1	48° 23' 50" N	115° 51' 30" W	DP-10	48° 23' 50" N	115° 51' 30" W
DP-2	48° 23' 50" N	115° 51' 30" W	DP-11	48° 23' 50" N	115° 51' 30" W
DP-3	48° 23' 50" N	115° 51' 30" W	DP-12	48° 23' 50" N	115° 51' 30" W
DP-4	48° 23' 50" N	115° 51' 30" W	DP-13	48° 23' 50" N	115° 51' 30" W
DP-5	48° 23' 50" N	115° 51' 30" W	DP-14	48° 23' 50" N	115° 51' 30" W
DP-6	48° 23' 50" N	115° 51' 30" W	DP-15	48° 23' 50" N	115° 51' 30" W
DP-7	48° 23' 50" N	115° 51' 30" W	DP-16	48° 23' 50" N	115° 51' 30" W
DP-8	48° 23' 50" N	115° 51' 30" W	DP-17	48° 23' 50" N	115° 51' 30" W
DP-9	48° 23' 50" N	115° 51' 30" W	DP-18	48° 23' 50" N	115° 51' 30" W
DP-19	48° 23' 50" N	115° 51' 30" W	DP-19	48° 23' 50" N	115° 51' 30" W
DP-20	48° 23' 50" N	115° 51' 30" W	DP-20	48° 23' 50" N	115° 51' 30" W
DP-21	48° 23' 50" N	115° 51' 30" W	DP-21	48° 23' 50" N	115° 51' 30" W
DP-22	48° 23' 50" N	115° 51' 30" W	DP-22	48° 23' 50" N	115° 51' 30" W
DP-23	48° 23' 50" N	115° 51' 30" W	DP-23	48° 23' 50" N	115° 51' 30" W
DP-24	48° 23' 50" N	115° 51' 30" W	DP-24	48° 23' 50" N	115° 51' 30" W
DP-25	48° 23' 50" N	115° 51' 30" W	DP-25	48° 23' 50" N	115° 51' 30" W
DP-26	48° 23' 50" N	115° 51' 30" W	DP-26	48° 23' 50" N	115° 51' 30" W
DP-27	48° 23' 50" N	115° 51' 30" W	DP-27	48° 23' 50" N	115° 51' 30" W
DP-28	48° 23' 50" N	115° 51' 30" W	DP-28	48° 23' 50" N	115° 51' 30" W
DP-29	48° 23' 50" N	115° 51' 30" W	DP-29	48° 23' 50" N	115° 51' 30" W
DP-30	48° 23' 50" N	115° 51' 30" W	DP-30	48° 23' 50" N	115° 51' 30" W
DP-31	48° 23' 50" N	115° 51' 30" W	DP-31	48° 23' 50" N	115° 51' 30" W
DP-32	48° 23' 50" N	115° 51' 30" W	DP-32	48° 23' 50" N	115° 51' 30" W
DP-33	48° 23' 50" N	115° 51' 30" W	DP-33	48° 23' 50" N	115° 51' 30" W
DP-34	48° 23' 50" N	115° 51' 30" W	DP-34	48° 23' 50" N	115° 51' 30" W
DP-35	48° 23' 50" N	115° 51' 30" W	DP-35	48° 23' 50" N	115° 51' 30" W
DP-36	48° 23' 50" N	115° 51' 30" W	DP-36	48° 23' 50" N	115° 51' 30" W
DP-37	48° 23' 50" N	115° 51' 30" W	DP-37	48° 23' 50" N	115° 51' 30" W
DP-38	48° 23' 50" N	115° 51' 30" W	DP-38	48° 23' 50" N	115° 51' 30" W
DP-39	48° 23' 50" N	115° 51' 30" W	DP-39	48° 23' 50" N	115° 51' 30" W
DP-40	48° 23' 50" N	115° 51' 30" W	DP-40	48° 23' 50" N	115° 51' 30" W
DP-41	48° 23' 50" N	115° 51' 30" W	DP-41	48° 23' 50" N	115° 51' 30" W
DP-42	48° 23' 50" N	115° 51' 30" W	DP-42	48° 23' 50" N	115° 51' 30" W
DP-43	48° 23' 50" N	115° 51' 30" W	DP-43	48° 23' 50" N	115° 51' 30" W
DP-44	48° 23' 50" N	115° 51' 30" W	DP-44	48° 23' 50" N	115° 51' 30" W
DP-45	48° 23' 50" N	115° 51' 30" W	DP-45	48° 23' 50" N	115° 51' 30" W
DP-46	48° 23' 50" N	115° 51' 30" W	DP-46	48° 23' 50" N	115° 51' 30" W
DP-47	48° 23' 50" N	115° 51' 30" W	DP-47	48° 23' 50" N	115° 51' 30" W
DP-48	48° 23' 50" N	115° 51' 30" W	DP-48	48° 23' 50" N	115° 51' 30" W
DP-49	48° 23' 50" N	115° 51' 30" W	DP-49	48° 23' 50" N	115° 51' 30" W
DP-50	48° 23' 50" N	115° 51' 30" W	DP-50	48° 23' 50" N	115° 51' 30" W
DP-51	48° 23' 50" N	115° 51' 30" W	DP-51	48° 23' 50" N	115° 51' 30" W
DP-52	48° 23' 50" N	115° 51' 30" W	DP-52	48° 23' 50" N	115° 51' 30" W
DP-53	48° 23' 50" N	115° 51' 30" W	DP-53	48° 23' 50" N	115° 51' 30" W
DP-54	48° 23' 50" N	115° 51' 30" W	DP-54	48° 23' 50" N	115° 51' 30" W
DP-55	48° 23' 50" N	115° 51' 30" W	DP-55	48° 23' 50" N	115° 51' 30" W
DP-56	48° 23' 50" N	115° 51' 30" W	DP-56	48° 23' 50" N	115° 51' 30" W
DP-57	48° 23' 50" N	115° 51' 30" W	DP-57	48° 23' 50" N	115° 51' 30" W
DP-58	48° 23' 50" N	115° 51' 30" W	DP-58	48° 23' 50" N	115° 51' 30" W
DP-59	48° 23' 50" N	115° 51' 30" W	DP-59	48° 23' 50" N	115° 51' 30" W
DP-60	48° 23' 50" N	115° 51' 30" W	DP-60	48° 23' 50" N	115° 51' 30" W