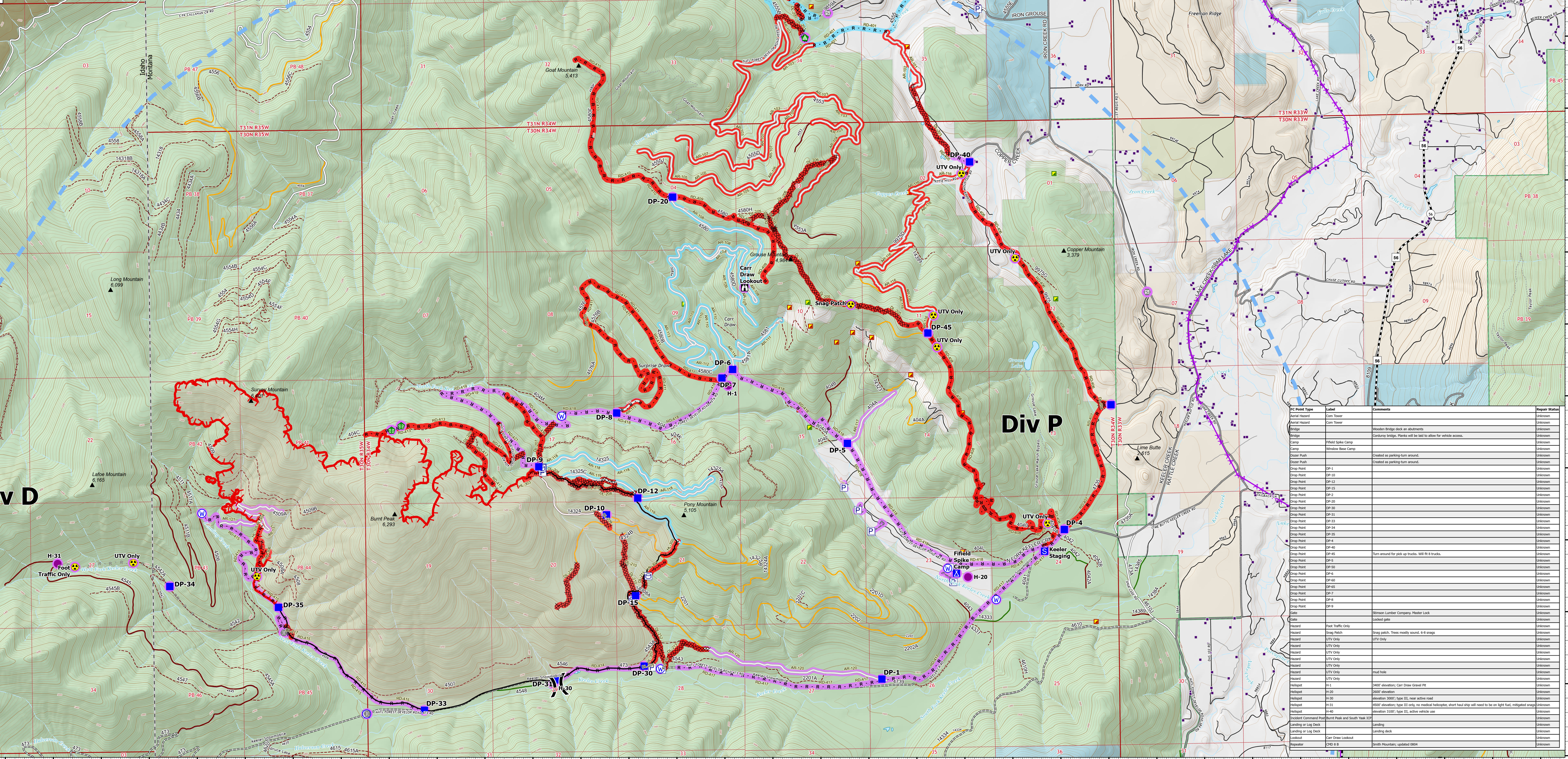
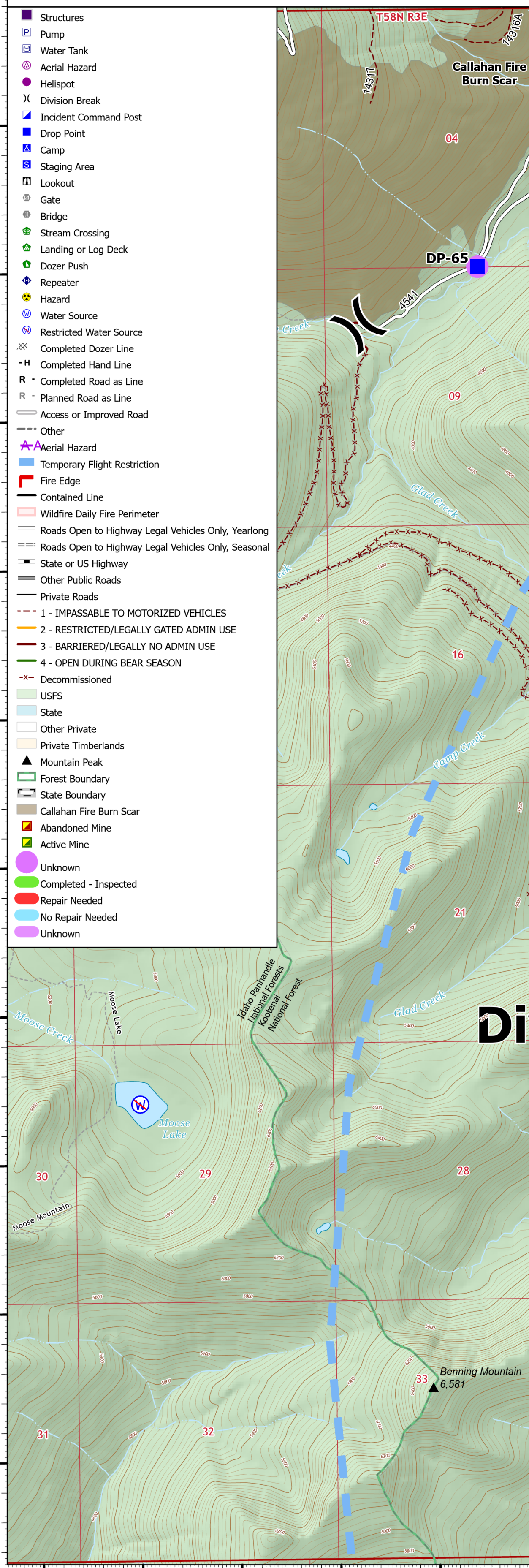


Suppression Repair Branch I

Burnt Peak
MT-KNF-000167
8/11 Day

3,583 acres at 8/08/2021 2125 hrs



FC Line Type	Label	Repair Status	Comments	Repair Comments
Access or Improved Road	AR-100	Repair Needed	Masticated existing road (barren) - heavily masticated. Small berm in north from masticated tracks on south side of road.	
Access or Improved Road	AR-101	Repair Needed	Existing road that was improved with mastication.	Existing private road that was improved with mastication.
Access or Improved Road	AR-102	No Repair Needed	No blade dropped, opened an existing private road with some limbing work.	Existing road opened with some limbing work.
Access or Improved Road	AR-103	Repair Needed	existing road, mastication both sides 30'	
Access or Improved Road	AR-104	Repair Needed	existing road, mastication both sides 30'	
Access or Improved Road	AR-105	Repair Needed	existing road, mastication both sides 30'	
Access or Improved Road	AR-106	Repair Needed	existing road but overgrown, not drivable even after heavy mastication both sides 30'	
Access or Improved Road	AR-108	No Repair Needed	for transportation reference, no suppression impacts	
Access or Improved Road	AR-109	No Repair Needed	for transportation reference, no suppression impacts	
Access or Improved Road	AR-110	No Repair Needed	for transportation reference, no suppression impacts	
Access or Improved Road	AR-111	No Repair Needed	for transportation reference, no suppression impacts	
Access or Improved Road	AR-112	No Repair Needed	for transportation reference, no suppression impacts	
Access or Improved Road	AR-113	No Repair Needed	for transportation reference, no suppression impacts	

FC Line Type	Label	Repair Status	Comments	Repair Comments
Access or Improved Road	AR-114	No Repair Needed	for transportation reference, no suppression impacts	
Access or Improved Road	AR-115	Unknown		
Access or Improved Road	AR-116	Repair Needed	Masticated to be open enough for pickup truck access only. Road is very narrow with turn arounds.	
Access or Improved Road	AR-117	Unknown		
Access or Improved Road	AR-118	No Repair Needed	for transportation reference, no suppression impacts	
Access or Improved Road	AR-119	No Repair Needed	for transportation reference, no suppression impacts	
Access or Improved Road	AR-120	Unknown		
Access or Improved Road	AR-121	Unknown		
Completed Dozer Line	DL-200	Repair Needed	Standard dozer line rehab	
Completed Dozer Line	DL-201	Repair Needed	Newly constructed dozer line, mastication both sides 30'	
Completed Dozer Line	DL-203	Repair Needed	One blade new dozer, then masticated on the west side 30'	

FC Line Type	Label	Repair Status	Comments	Repair Comments
Completed Dozer Line	DL-204	Repair Needed	One blade wide with 30 foot mastication	
Completed Dozer Line	DL-205	Repair Needed	New dozer line	
Completed Dozer Line	DL-206	Repair Needed	single blade, mastication	
Completed Dozer Line	DL-207	Repair Needed	one blade, mastication 30'	
Completed Dozer Line	DL-208	Repair Needed	New dozer line	
Completed Dozer Line	DL-209	Repair Needed	New dozer line	
Completed Dozer Line	DL-209	Repair Needed	New dozer line	
Completed Dozer Line	DL-210	Repair Needed	New dozer line	
Completed Dozer Line	DL-211	Repair Needed	New dozer line	
Completed Dozer Line	DL-212	Repair Needed	New dozer line	
Completed Dozer Line	DL-213	Repair Needed	dozer line on previously closed road	
Completed Dozer Line	DL-214	Repair Needed	New dozer line	
Completed Dozer Line	DL-215	Repair Needed	New dozer line	
Completed Dozer Line	DL-216	Repair Needed	dozer line on previously closed road	

FC Line Type	Label	Repair Status	Comments	Repair Comments
Completed Dozer Line	DL-217	Repair Needed	New dozer line	
Completed Dozer Line	DL-218	Repair Needed	New dozer line	
Completed Hand Line	HL-300	Repair Needed	Line is plumbred with a hose lay	
Completed Hand Line	HL-301	Repair Needed		
Completed Hand Line	HL-302	Repair Needed		
Completed Hand Line	HL-303	Repair Needed		
Completed Hand Line	HL-303	Completed - Inspected	30' saw cut with 2" scrape	
Completed Hand Line	HL-304	Repair Needed		
Completed Hand Line	HL-305	Repair Needed		
Completed Hand Line	HL-306	Repair Needed		
Completed Road as Line	RD-400	Unknown	Existing logging road, dozed and masticated 30 feet both sides	
Completed Road as Line	RD-401	No Repair Needed	County Road, mastication	
Completed Road as Line	RD-402	Repair Needed	previously closed road, single blade dozer, mastication both sides 30'	
Completed Road as Line	RD-403	No Repair Needed	Existing logging road, dozed and masticated 30 feet both sides	

FC Line Type	Label	Repair Status	Comments	Repair Comments
Completed Road as Line	RD-403	Unknown	Existing logging road, opened with masticator. Only the roadbed is cleared. No mastication on either side.	
Completed Road as Line	RD-404	Repair Needed	Masticated existing road. About 30 feet wide at the start, narrows as it progresses north.	
Completed Road as Line	RD-405	Unknown	One blade on existing private road, then masticated on the west side one boom length.	
Completed Road as Line	RD-406	Repair Needed	some sections previously closed road, some sections private, mastication both sides 30'	
Completed Road as Line	RD-407	Repair Needed	mastication both sides of road 30'	
Completed Road as Line	RD-408	Repair Needed	previously closed road, Road between DP-45, Southeast to new DP accessible by pick up truck. Lv only downhill from there. C	
Completed Road as Line	RD-409	Repair Needed	previously closed road opened with dozer, prepiped	
Completed Road as Line	RD-410	Repair Needed	previously closed road, single blade dozer, mastication 30'	
Completed Road as Line	RD-411	Repair Needed	single blade dozer, previously closed road; Line completed 7/19/21	
Completed Road as Line	RD-411	Repair Needed	single blade dozer, previously closed road; Line completed 7/19/21	
Completed Road as Line	RD-412	Repair Needed	single dozer, previously closed road	
Completed Road as Line	RD-413	Repair Needed	single blade dozer, mastication both sides, previously closed road	
Completed Road as Line	RD-413	Repair Needed	2 wide blade dozer line, previously closed road	
Completed Road as Line	RD-413	Repair Needed		

FC Line Type	Label	Repair Status	Comments	Repair Comments
Completed Road as Line	RD-414	Unknown		
Completed Road as Line	RD-415	Unknown		
Completed Road as Line	RD-416	Repair Needed	previously closed road, single blade dozer, mastication both sides 30'	
Completed Road as Line	RD-417	Unknown	Existing road with 30' masticator prep.	
Completed Road as Line	RD-418	Unknown	Existing road with 30' masticator prep.	
Completed Road as Line	RD-419	Unknown	Road with 20' masticator prep.	
Completed Road as Line	RD-420	Unknown	Road with 30' masticator prep.	
Completed Road as Line	RD-421	Unknown	Road with 20' masticator prep.	
Other		Unknown	Hose lay and Sprinkler kit set up	
Other		Unknown	Hose lay and Sprinkler kit set up	
Other		Unknown	Hose lay and Sprinkler kit set up	
Other		Unknown	Hose lay and Sprinkler kit set up	
Other		Unknown	Chained vegetation from a green in existing access road. No blade work, undesirable, narrow with no ability to turn around.	

FC Line Type	Label	Repair Status	Comments	Repair Comments
Access or Improved Road	AR-100	Repair Needed	Masticated existing road (barren) - heavily masticated. Small berm in north from masticated tracks on south side of road.	
Access or Improved Road	AR-101	Repair Needed	Existing road that was improved with mastication.	Existing private road that was improved with mastication.
Access or Improved Road	AR-102	No Repair Needed	No blade dropped, opened an existing private road with some limbing work.	Existing road opened with some limbing work.
Access or Improved Road	AR-103	Repair Needed	existing road, mastication both sides 30'	
Access or Improved Road	AR-104	Repair Needed	existing road, mastication both sides 30'	
Access or Improved Road	AR-105	Repair Needed	existing road, mastication both sides 30'	
Access or Improved Road	AR-107	Repair Needed	existing road but overgrown, not drivable even after heavy mastication both sides 30'	
Access or Improved Road	AR-108	No Repair Needed	for transportation reference, no suppression impacts	
Access or Improved Road	AR-109	No Repair Needed	for transportation reference, no suppression impacts	
Access or Improved Road	AR-110	No Repair Needed	for transportation reference, no suppression impacts	
Access or Improved Road	AR-111	No Repair Needed	for transportation reference, no suppression impacts	
Access or Improved Road	AR-112	No Repair Needed	for transportation reference, no suppression impacts	
Access or Improved Road	AR-113	No Repair Needed	for transportation reference, no suppression impacts	
Access or Improved Road	AR-114	No Repair Needed	for transportation reference, no suppression impacts	
Access or Improved Road	AR-115	Unknown		
Access or Improved Road	AR-116	Repair Needed	Masticated to be open enough for pickup truck access only. Road is very narrow with turn arounds.	
Access or Improved Road	AR-117	Unknown		
Access or Improved Road	AR-118	No Repair Needed	for transportation reference, no suppression impacts	
Access or Improved Road	AR-119	No Repair Needed	for transportation reference, no suppression impacts	
Access or Improved Road	AR-120	Unknown		
Access or Improved Road	AR-121	Unknown		
Completed Dozer Line	DL-200	Repair Needed	Standard dozer line rehab	
Completed Dozer Line	DL-201	Repair Needed	Newly constructed dozer line, mastication both sides 30'	
Completed Dozer Line	DL-203	Repair Needed	One blade new dozer, then masticated on the west side 30'	