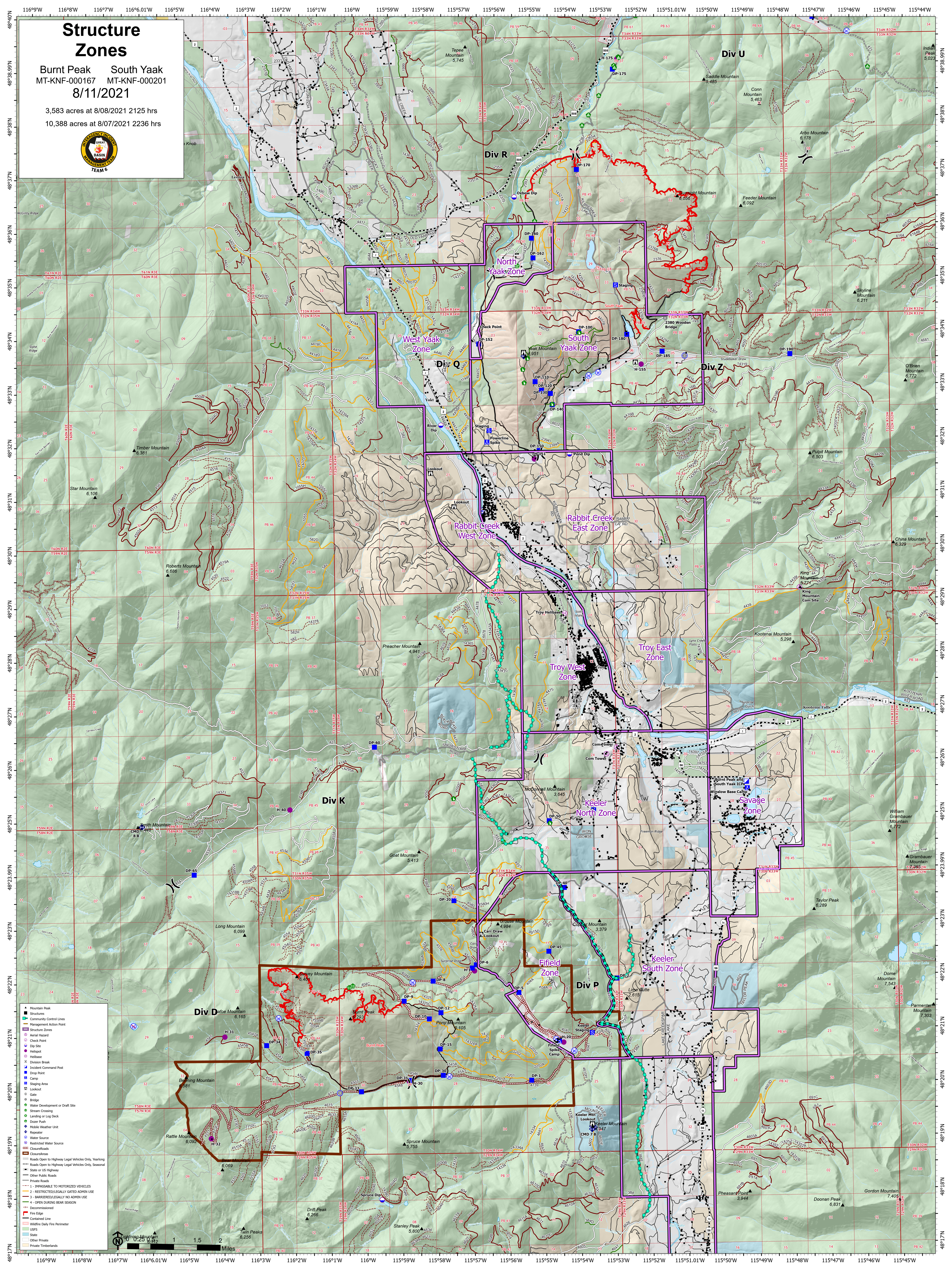


# Structure Zones

Burnt Peak South Yaak  
MT-KNF-000167 MT-KNF-000201  
8/11/2021

3,583 acres at 8/08/2021 2125 hrs  
10,388 acres at 8/07/2021 2236 hrs



- Mountain Peak
- Structures
- Community Control Lines
- Management Action Point
- Structure Zones
- Aerial Hazard
- Check Point
- Dip Site
- Hillbase
- Hillbase
- Division Break
- Incident Command Post
- Drop Point
- Camp
- Staging Area
- Lookout
- Gate
- Bridge
- Water Development or Draft Site
- Stream Crossing
- Landing or Log Deck
- Discus Path
- Mobile Weather Unit
- Repeater
- Water Source
- Restricted Water Source
- Closure/Roads
- Roads Open to Highway Legal Vehicles Only, Yearlong
- Roads Open to Highway Legal Vehicles Only, Seasonal
- State or US Highway
- Other Public Roads
- Private Roads
- 1 - IMPROBABLE TO MOTORIZED VEHICLES
- 2 - RESTRICTED/LEGALLY GATED ADMIN USE
- 3 - BARRIERED/LEGALLY NO ADMIN USE
- 4 - OPEN DURING BEAR SEASON
- Decommissioned
- Fire Edge
- Wildfire Daily Fire Perimeter
- USFS
- State
- Other Private
- Private Timberlands

