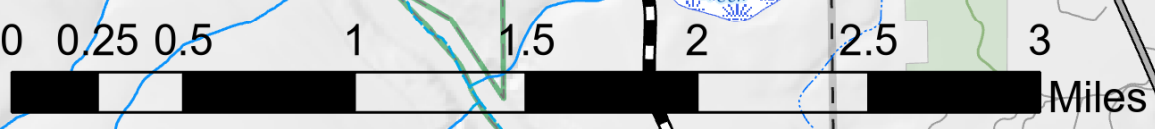
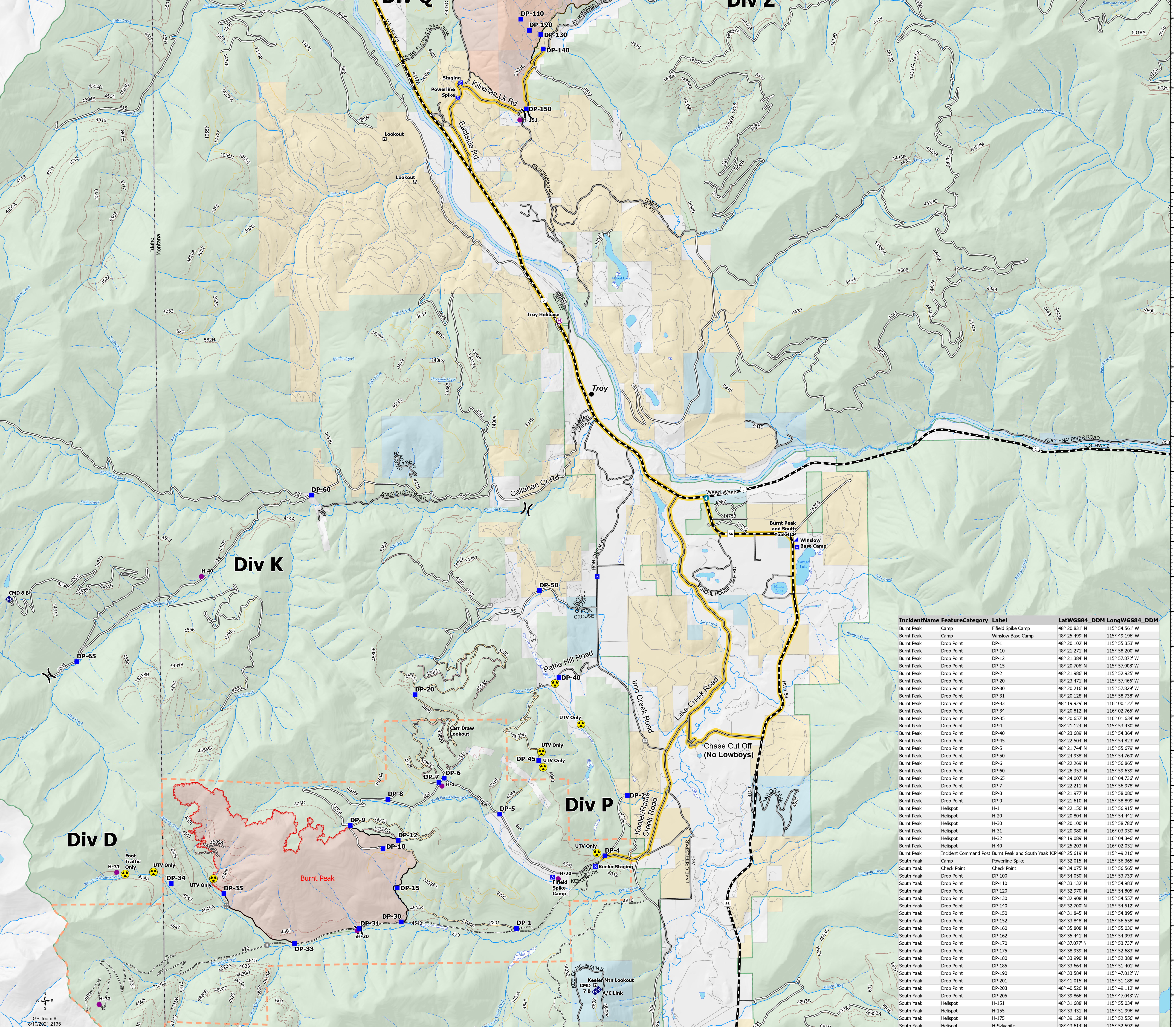


Transportation

Burnt Peak MT-KNF-000167
South Yaak MT-KNF-000201
8/11/2021



- Fire Perimeter
- Label Point
- Helispot
- Helibase
- Division Break
- Incident Command Post
- Drop Point
- Camp
- Staging Area
- Lookout
- Gate
- Bridge
- Repeater
- Hazard
- Access or Improved Road
- Fire Edge
- Contained Line
- Weed Wash Station
- Closure Area
- Roads Open to Highway Legal Vehicles
- Only, Yearling
- Roads Open to Highway Legal Vehicles
- Only, Seasonal
- State or US Highway
- Other Public Roads
- Private Roads
- 1 - IMPASSABLE TO MOTORIZED VEHICLES
- 2 - RESTRICTED/LEGALLY GATED ADMIN USE
- 3 - BARRIERED/LEGALLY NO ADMIN USE
- 4 - OPEN DURING BEAR SEASON
- Travel Route
- FS
- MT State
- Other Private
- Private Timberlands
- Water
- Cities
- Forest Boundary
- State Boundary



IncidentName	FeatureCategory	Label	LatWGS84_DDM	LongWGS84_DDM
Burnt Peak	Camp	Field Spike Camp	48° 20.831' N	115° 54.561' W
Burnt Peak	Camp	Winslow Base Camp	48° 25.499' N	115° 49.196' W
Burnt Peak	Drop Point	DP-1	48° 20.107' N	115° 55.353' W
Burnt Peak	Drop Point	DP-10	48° 21.271' N	115° 58.200' W
Burnt Peak	Drop Point	DP-12	48° 21.384' N	115° 57.872' W
Burnt Peak	Drop Point	DP-15	48° 20.706' N	115° 57.908' W
Burnt Peak	Drop Point	DP-2	48° 21.986' N	115° 52.925' W
Burnt Peak	Drop Point	DP-20	48° 23.471' N	115° 57.466' W
Burnt Peak	Drop Point	DP-30	48° 22.216' N	115° 57.829' W
Burnt Peak	Drop Point	DP-31	48° 20.128' N	115° 58.738' W
Burnt Peak	Drop Point	DP-33	48° 19.929' N	116° 00.127' W
Burnt Peak	Drop Point	DP-34	48° 20.812' N	116° 02.765' W
Burnt Peak	Drop Point	DP-35	48° 20.657' N	116° 01.634' W
Burnt Peak	Drop Point	DP-4	48° 21.124' N	115° 53.430' W
Burnt Peak	Drop Point	DP-40	48° 22.689' N	115° 54.364' W
Burnt Peak	Drop Point	DP-45	48° 22.504' N	115° 54.823' W
Burnt Peak	Drop Point	DP-5	48° 21.744' N	115° 55.679' W
Burnt Peak	Drop Point	DP-50	48° 24.938' N	115° 54.760' W
Burnt Peak	Drop Point	DP-6	48° 22.269' N	115° 56.865' W
Burnt Peak	Drop Point	DP-60	48° 26.353' N	115° 59.639' W
Burnt Peak	Drop Point	DP-65	48° 24.007' N	115° 54.726' W
Burnt Peak	Drop Point	DP-7	48° 22.211' N	115° 56.978' W
Burnt Peak	Drop Point	DP-8	48° 21.977' N	115° 58.080' W
Burnt Peak	Drop Point	DP-9	48° 21.610' N	115° 58.899' W
Burnt Peak	Drop Point	DP-11	48° 21.156' N	115° 56.815' W
Burnt Peak	Drop Point	DP-170	48° 20.809' N	115° 54.412' W
Burnt Peak	Drop Point	DP-175	48° 20.107' N	115° 58.780' W
Burnt Peak	Drop Point	DP-180	48° 20.980' N	115° 53.930' W
Burnt Peak	Drop Point	DP-185	48° 19.089' N	116° 04.346' W
Burnt Peak	Drop Point	DP-190	48° 25.203' N	116° 02.031' W
Burnt Peak	Drop Point	DP-201	48° 25.619' N	115° 49.216' W
South Yaak	Camp	Powerline Spike	48° 22.015' N	115° 56.365' W
South Yaak	Check Point	Check Point	48° 34.075' N	115° 56.565' W
South Yaak	Drop Point	DP-100	48° 31.132' N	115° 53.739' W
South Yaak	Drop Point	DP-110	48° 31.132' N	115° 54.983' W
South Yaak	Drop Point	DP-120	48° 32.970' N	115° 54.805' W
South Yaak	Drop Point	DP-130	48° 32.908' N	115° 54.557' W
South Yaak	Drop Point	DP-140	48° 32.700' N	115° 54.512' W
South Yaak	Drop Point	DP-150	48° 31.845' N	115° 54.895' W
South Yaak	Drop Point	DP-152	48° 33.848' N	115° 56.558' W
South Yaak	Drop Point	DP-160	48° 35.808' N	115° 55.030' W
South Yaak	Drop Point	DP-162	48° 35.441' N	115° 54.993' W
South Yaak	Drop Point	DP-170	48° 37.077' N	115° 53.737' W
South Yaak	Drop Point	DP-175	48° 38.939' N	115° 52.683' W
South Yaak	Drop Point	DP-180	48° 33.990' N	115° 52.388' W
South Yaak	Drop Point	DP-185	48° 33.664' N	115° 51.401' W
South Yaak	Drop Point	DP-190	48° 33.584' N	115° 47.812' W
South Yaak	Drop Point	DP-201	48° 41.015' N	115° 51.188' W
South Yaak	Drop Point	DP-203	48° 40.526' N	115° 49.412' W
South Yaak	Drop Point	DP-205	48° 38.866' N	115° 47.943' W
South Yaak	Helispot	H-151	48° 31.688' N	115° 55.034' W
South Yaak	Helispot	H-155	48° 33.431' N	115° 51.996' W
South Yaak	Helispot	H-175	48° 39.128' N	115° 52.556' W
South Yaak	Helispot	H-Sylvanite	48° 43.614' N	115° 52.592' W