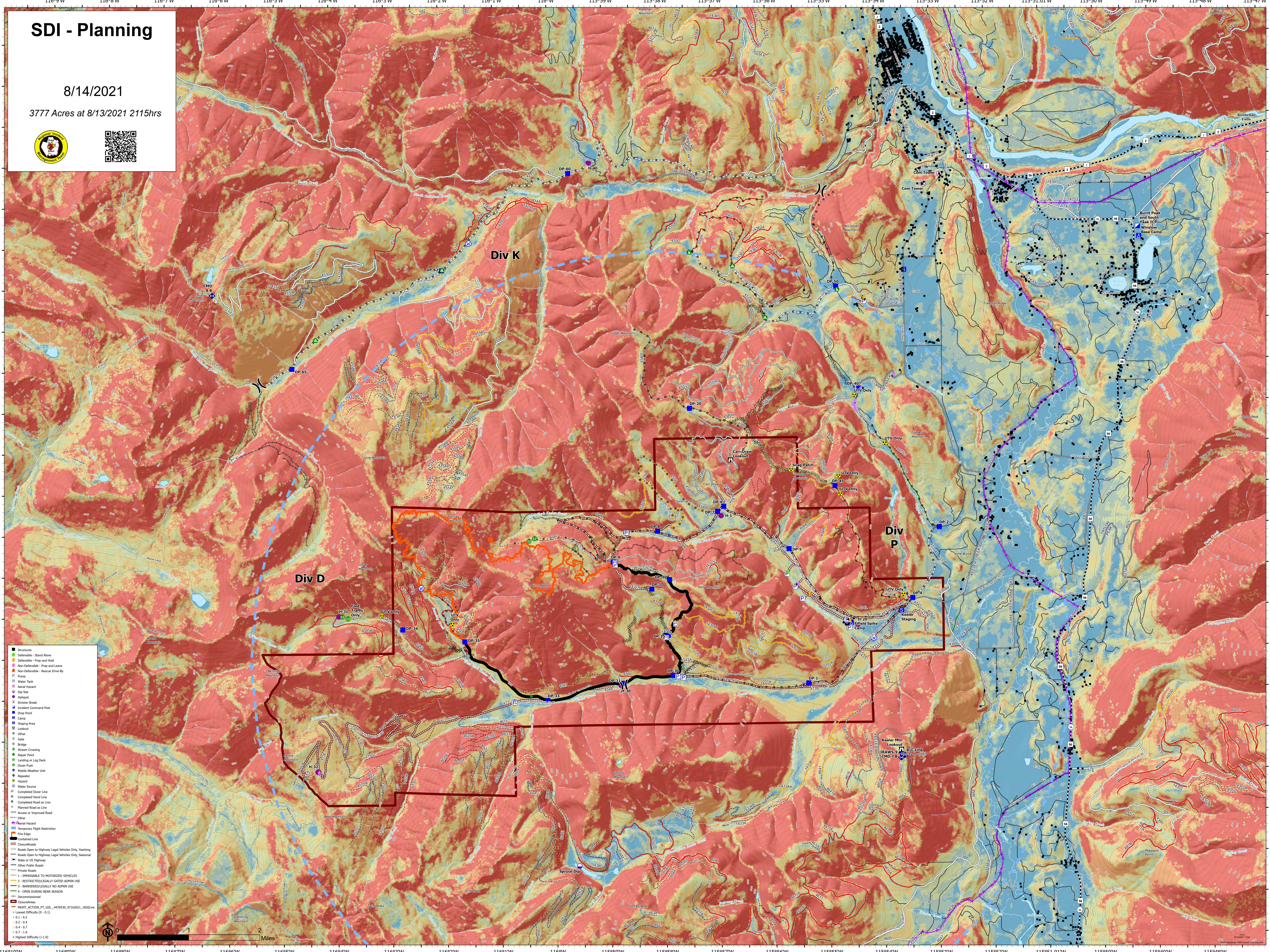


# SDI - Planning

8/14/2021

3777 Acres at 8/13/2021 2115hrs



- Structure
- Defensible - Stand Alone
- Defensible - Trap and Hold
- Non-Defensible - Trap and Leave
- Non-Defensible - Rescue Driveway
- Pump
- Water Tank
- Aerial Hazard
- Dip Site
- Helipad
- Division Break
- Incident Command Post
- Drop Point
- Camp
- Sleeping Area
- Lookout
- Other
- Gate
- Bridge
- Stream Crossing
- Repair Point
- Landing or Log Deck
- Chain Pull
- Mobile Weather Unit
- Repeater
- Heard
- Water Source
- Completed Dicer Line
- Completed Hand Line
- Completed Road as Line
- Planned Road as Line
- Access or Improved Road
- Other
- Permit Hazard
- Temporary Flight Restriction
- Fire Edge
- Contaminated Line
- Closure/roads
- Roads Open to Highway Legal Vehicles Only, Yearling
- Roads Open to Highway Legal Vehicles Only, Seasonal
- State or US Highway
- Other Public Roads
- Private Roads
- 1 - IMPROVABLE TO MOTORIZED VEHICLES
- 2 - RESTRICTED/LEGALLY GATED ADMIN USE
- 3 - BARRIERS/LEGALLY NO ADMIN USE
- 4 - OPEN DURING BEAR SEASON
- Disseminated
- Closure/area
- HGMT\_ACTION\_PT\_GIS\_4476530\_07162021\_1820Line
- Lower Difficulty (0 - 0.1)
- 0.1 - 0.2
- 0.2 - 0.4
- 0.4 - 0.7
- 0.7 - 1.0
- Highest Difficulty (>1.0)