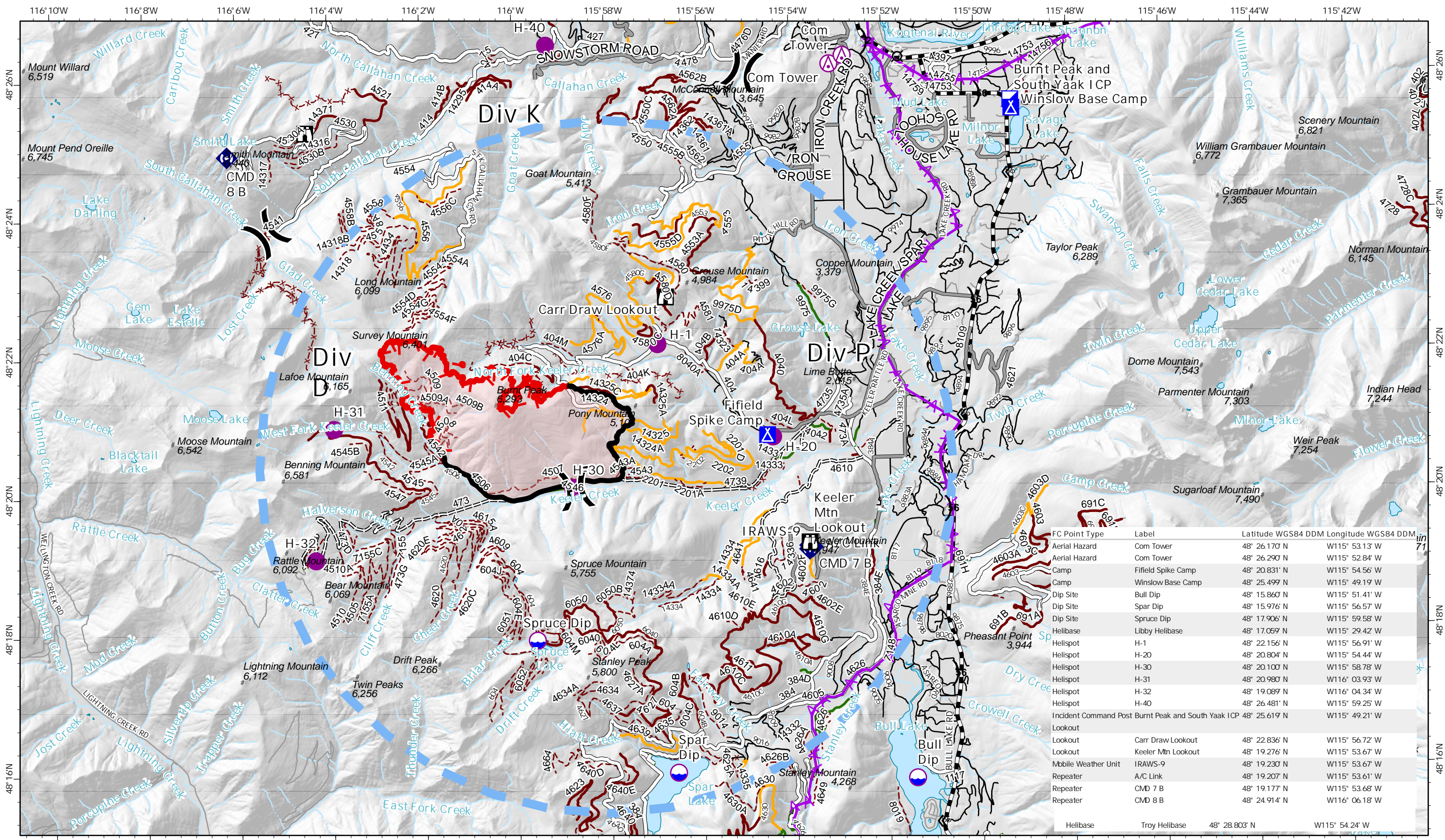


# PILOT MAP

## BURNT PEAK

## MT-KNF-000167

8/15/2021



FC Point Type	Label	Latitude WGS84 DDM	Longitude WGS84 DDM
Aerial Hazard	Com Tower	48° 26.170' N	W115° 53.13' W
Aerial Hazard	Com Tower	48° 26.290' N	W115° 52.84' W
Camp	Fifield Spike Camp	48° 20.831' N	W115° 54.56' W
Camp	Winflow Base Camp	48° 25.499' N	W115° 49.19' W
Dip Site	Bull Dip	48° 15.860' N	W115° 51.41' W
Dip Site	Spar Dip	48° 15.976' N	W115° 56.57' W
Dip Site	Spruce Dip	48° 17.906' N	W115° 59.58' W
Helibase	Libby Helibase	48° 17.059' N	W115° 29.42' W
Helispot	H-1	48° 22.156' N	W115° 56.91' W
Helispot	H-20	48° 20.804' N	W115° 54.44' W
Helispot	H-30	48° 20.100' N	W115° 58.78' W
Helispot	H-31	48° 20.980' N	W116° 03.93' W
Helispot	H-32	48° 19.089' N	W116° 04.34' W
Helispot	H-40	48° 26.481' N	W115° 59.25' W
Incident Command Post	Burnt Peak and South Yaak ICP	48° 25.619' N	W115° 49.21' W
Lookout	Carr Draw Lookout	48° 22.836' N	W115° 56.72' W
Lookout	Keeler Mtn Lookout	48° 19.276' N	W115° 53.67' W
Mobile Weather Unit	IRAWS-9	48° 19.230' N	W115° 53.67' W
Repeater	A/C Link	48° 19.207' N	W115° 53.61' W
Repeater	CMD 7 B	48° 19.177' N	W115° 53.68' W
Repeater	CMD 8 B	48° 24.914' N	W116° 06.18' W
Helibase	Troy Helibase	48° 28.803' N	W115° 54.24' W

3777 est. acres  
Acres from IR 8/13/2021 2115 hrs  
2 Miles

# Mountain Peak	) Division Break	Lookout	Aerial Hazard	Contained Line	Roads Open to Highway Legal Vehicles Only, Seasonal	Private Roads	3 - BARRIERED/LEGALLY NO ADMN USE	Wildfire Daily Fire Perimeter
⊕ Aerial Hazard	⊕ Incident Command Post	⊕ Mobile Weather Unit	⊕ Temporary Flight Restriction	-X- Decommissioned	⊕ State or US Highway	⊕ 1 - IMPASSABLE TO MOTORIZED VEHICLES	4 - OPEN DURING BEAR SEASON	
⊕ Dip Site	⊕ Camp	⊕ Repeater	⊕ Fire Edge	⊕ Roads Open to Highway Legal Vehicles Only, Yearlong	⊕ Other Public Roads	⊕ 2 - RESTRICTED/LEGALLY GATED ADMN USE		
⊕ Helispot								

8/14/2021 10:01 AM