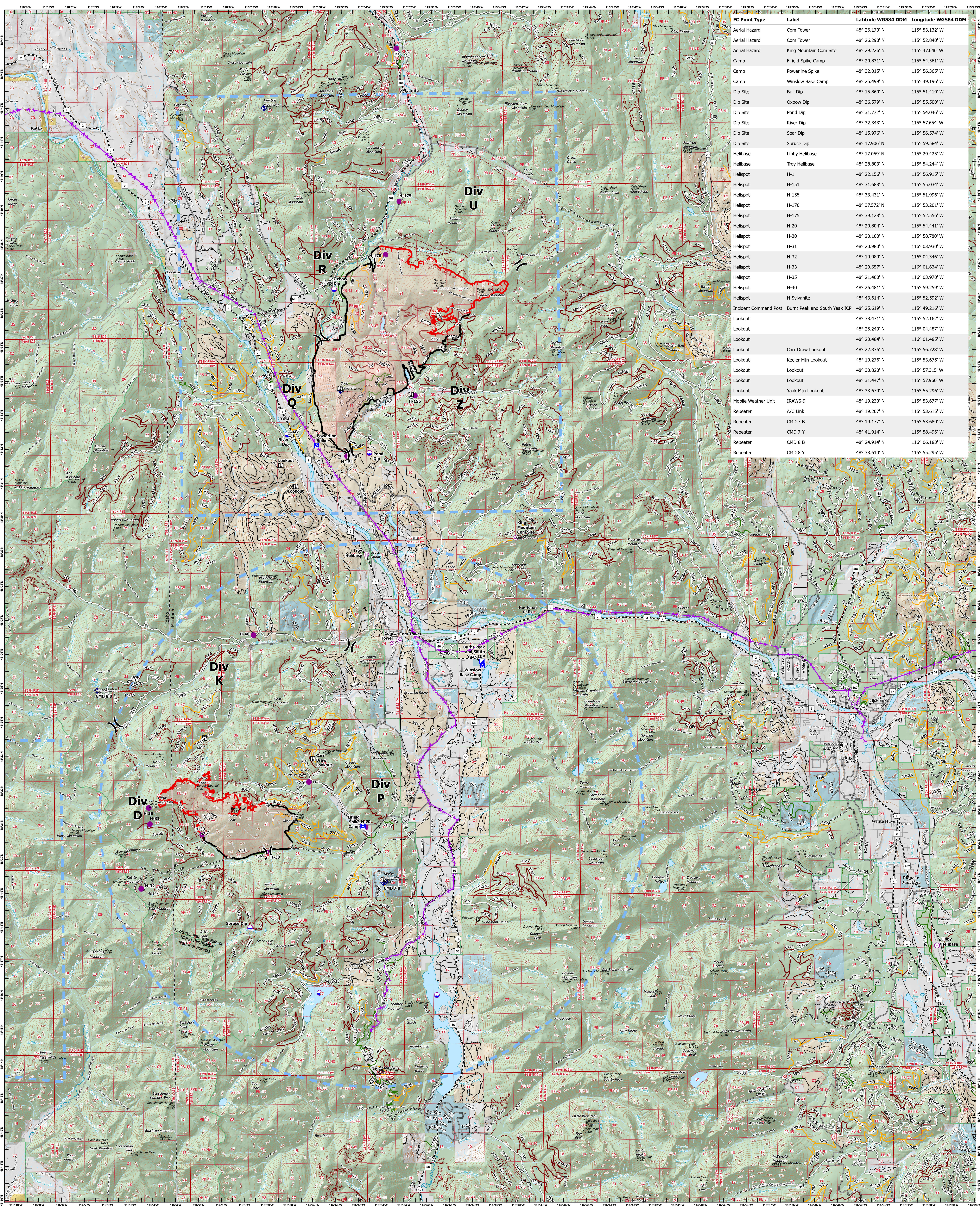


AIR OPS

BURNT PEAK MT-KNF-00167

SOUTH YAAK MT-KNF-00201



FC Point Type	Label	Latitude WGS84 DDM	Longitude WGS84 DDM
Aerial Hazard	Com Tower	48° 26.170' N	115° 53.132' W
Aerial Hazard	Com Tower	48° 26.290' N	115° 52.840' W
Aerial Hazard	King Mountain Com Site	48° 29.226' N	115° 47.646' W
Camp	Field Spike Camp	48° 20.831' N	115° 54.561' W
Camp	Powerline Spike	48° 32.015' N	115° 56.365' W
Camp	Winslow Base Camp	48° 25.499' N	115° 49.196' W
Dip Site	Bull Dip	48° 15.860' N	115° 51.419' W
Dip Site	Oxbow Dip	48° 36.579' N	115° 55.500' W
Dip Site	Pond Dip	48° 31.772' N	115° 54.046' W
Dip Site	River Dip	48° 32.343' N	115° 57.654' W
Dip Site	Spar Dip	48° 15.976' N	115° 56.574' W
Dip Site	Spruce Dip	48° 17.906' N	115° 59.584' W
Helibase	Libby Helibase	48° 17.059' N	115° 29.425' W
Helibase	Troy Helibase	48° 28.803' N	115° 54.244' W
Helispot	H-1	48° 22.156' N	115° 56.915' W
Helispot	H-151	48° 31.688' N	115° 55.034' W
Helispot	H-155	48° 33.431' N	115° 51.996' W
Helispot	H-170	48° 37.572' N	115° 53.201' W
Helispot	H-175	48° 39.128' N	115° 52.556' W
Helispot	H-20	48° 20.804' N	115° 54.441' W
Helispot	H-30	48° 20.100' N	115° 58.780' W
Helispot	H-31	48° 20.980' N	116° 03.930' W
Helispot	H-32	48° 19.089' N	116° 04.346' W
Helispot	H-33	48° 20.657' N	116° 01.634' W
Helispot	H-35	48° 21.460' N	116° 03.970' W
Helispot	H-40	48° 26.481' N	115° 59.259' W
Helispot	H-Sylvante	48° 43.614' N	115° 52.592' W
Incident Command Post	Burnt Peak and South Yaak ICP	48° 25.619' N	115° 49.216' W
Lookout		48° 33.471' N	115° 52.162' W
Lookout		48° 25.249' N	116° 04.487' W
Lookout		48° 23.484' N	116° 01.485' W
Lookout	Carr Draw Lookout	48° 22.836' N	115° 56.728' W
Lookout	Keeler Mtn Lookout	48° 19.276' N	115° 53.675' W
Lookout		48° 30.820' N	115° 57.315' W
Lookout		48° 31.447' N	115° 57.960' W
Lookout	Yaak Mtn Lookout	48° 33.679' N	115° 55.296' W
Mobile Weather Unit	IRAWS-9	48° 19.230' N	115° 53.677' W
Repeater	A/C Link	48° 19.207' N	115° 53.615' W
Repeater	CMD 7 B	48° 19.177' N	115° 53.680' W
Repeater	CMD 7 Y	48° 41.914' N	115° 58.496' W
Repeater	CMD 8 B	48° 24.914' N	116° 06.183' W
Repeater	CMD 8 Y	48° 33.610' N	115° 55.295' W

8/23/2021

0 1 2 4 Miles

- Aerial Hazard
- Incident Command Post
- Temporary Flight Restriction
- 4 - OPEN DURING BEAR SEASON
- Private
- Dip Site
- Camp
- Fire Edge
- <Null>
- Helispot
- Contained Line
- Index
- Helibase
- Lookout
- 1 - IMPASSABLE TO MOTORIZED VEHICLES
- Bureau of Land Management (BLM)
- Division Break
- Mobile Weather Unit
- 2 - RESTRICTED/LEGALLY GATED ADMIN USE
- State
- Repeater
- 3 - BARRIERED/LEGALLY NO ADMIN USE
- US Forest Service (USFS)
- Aerial Hazard

Air Ops
8/23/2021 8:40 PM Hrs