

# PROGRESSION

BURNT PEAK  
MT-KNF-000167  
7/29/2021

3,097 acres at 7/28/2021 2126 hrs



July 09, 2021: 120 ac
July 10, 2021: 363 ac
July 11, 2021: 582 ac
July 12, 2021: 908 ac
July 14, 2021: 1350 ac
July 15, 2021: 1697 ac
July 16, 2021: 1864 ac
July 17, 2021: 1954 ac
July 19, 2021: 2050 ac
July 20, 2021: 2089 ac
July 21, 2021: 2121 ac
July 22, 2021: 2185 ac
July 23, 2021: 2240 ac
July 24, 2021: 2413 ac
July 25, 2021: 2713 ac
July 26, 2021: 2878 ac
July 27, 2021: 3000 ac
July 28, 2021: 3097 ac

## DIV K

## DIV P

## DIV D

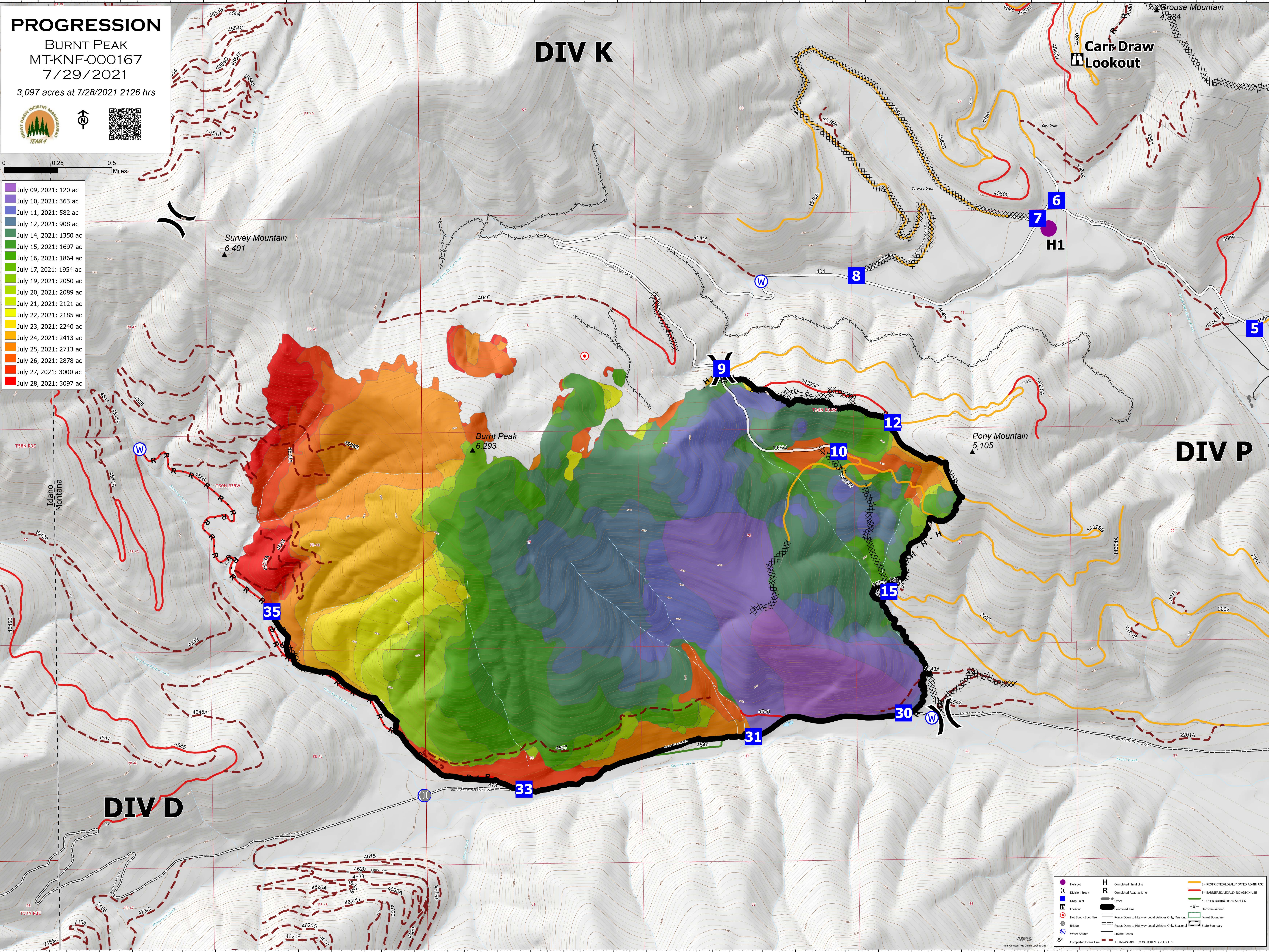
Survey Mountain  
6,401

Burnt Peak  
6,293

Pony Mountain  
5,105

Carr Draw  
Lookout

Grouse Mountain  
4,984



	Hotspot		Completed Hand Line		RESTRICTIVELY LEGALLY GATED ADMIN USE
	Division Break		Other		BARRED/LEGALLY NO ADMIN USE
	Drop Point		Completed Road as Line		OPEN DURING BEAR SEASON
	Lookout		Contoured Line		Decommissioned
	Hot Spot - Spot Fire		Roads Open to Highway Legal Vehicles Only, Yearlong		Forest boundary
	Bridge		Roads Open to Highway Legal Vehicles Only, Seasonal		State boundary
	Water Source		Private Roads		IMPASSIBLE TO MOTORIZED VEHICLES
	Completed Dism Line		IMPASSIBLE TO MOTORIZED VEHICLES		