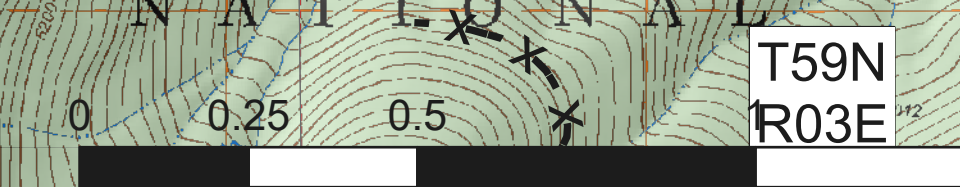


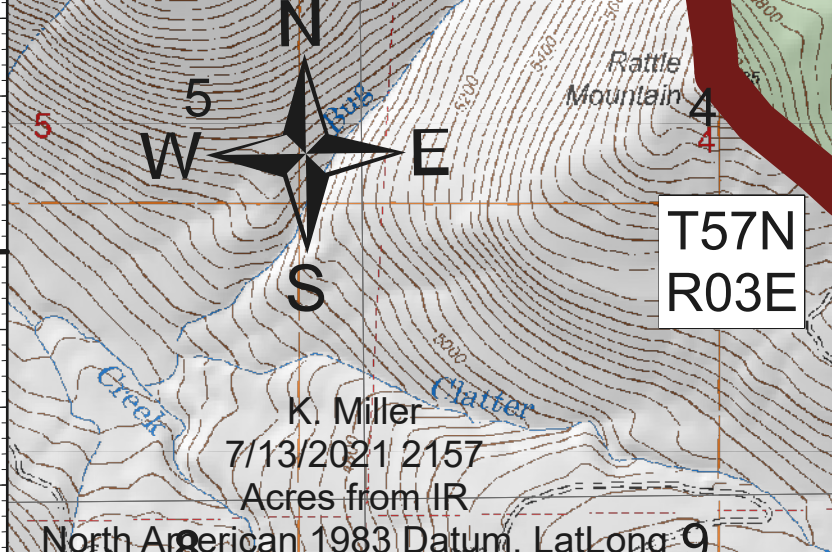
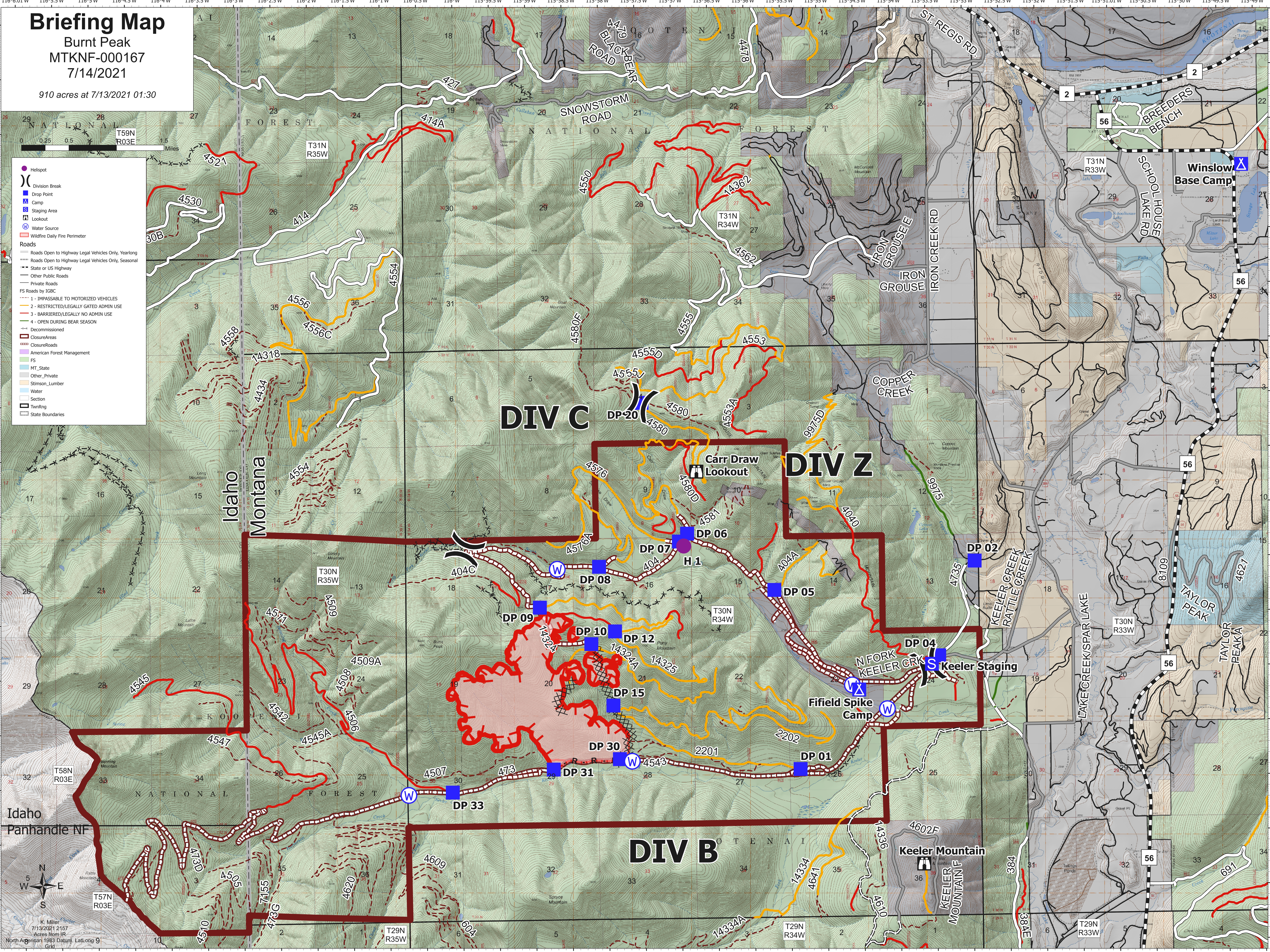
# Briefing Map

Burnt Peak  
MTKNF-000167  
7/14/2021

910 acres at 7/13/2021 01:30



- Helispot
  - ( ) Division Break
  - Drop Point
  - Camp
  - Staging Area
  - Lookout
  - Water Source
  - ▭ Wildfire Daily Fire Perimeter
- Roads**
- Roads Open to Highway Legal Vehicles Only, Yearlong
  - - - Roads Open to Highway Legal Vehicles Only, Seasonal
  - State or US Highway
  - Other Public Roads
  - Private Roads
- FS Roads by IGBC**
- 1 - IMPASSABLE TO MOTORIZED VEHICLES
  - 2 - RESTRICTED/LEGALLY GATED ADMIN USE
  - 3 - BARRIERED/LEGALLY NO ADMIN USE
  - 4 - OPEN DURING BEAR SEASON
- ▭ Decommissioned
- ▭ ClosureAreas
- ▭ ClosureRoads
- ▭ American Forest Management
- ▭ FS
- ▭ MT\_State
- ▭ Other\_Private
- ▭ Stimson\_Lumber
- ▭ Water
- ▭ Section
- ▭ TownRing
- ▭ State Boundaries



K. Miller  
7/13/2021 2157  
Acres from IR  
North American 1983 Datum, Lat/Long 9