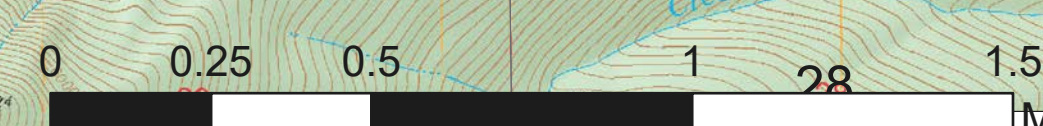


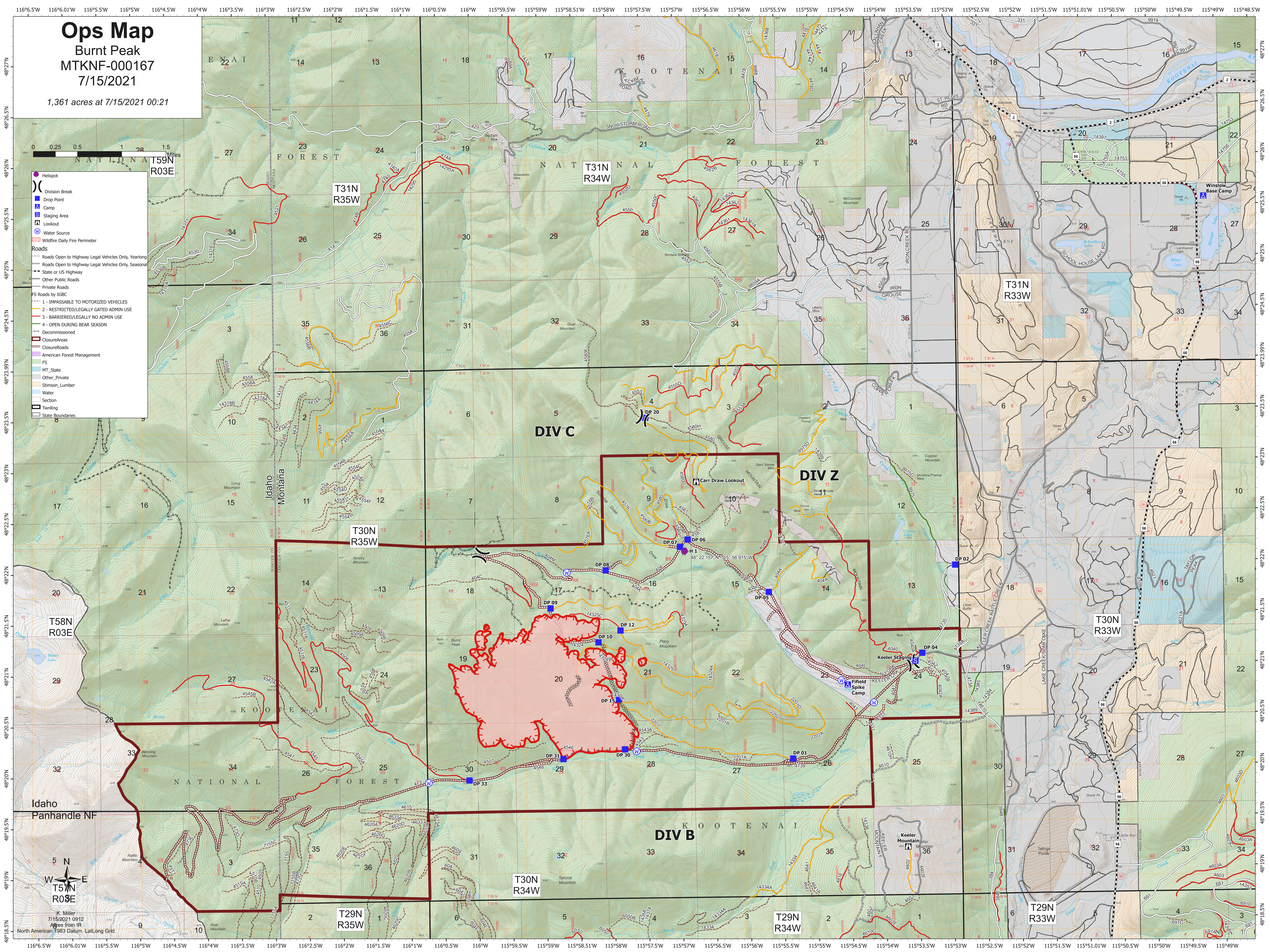
Ops Map

Burnt Peak
MTKNF-000167
7/15/2021

1,361 acres at 7/15/2021 00:21



- Helispot
- () Division Break
- Drop Point
- ▲ Camp
- Staging Area
- Lookout
- Water Source
- Wildfire Daily Fire Perimeter
- Roads**
 - Roads Open to Highway Legal Vehicles Only, Yearlong
 - Roads Open to Highway Legal Vehicles Only, Seasonal
 - State or US Highway
 - Other Public Roads
 - Private Roads
 - FS Roads by IGBC**
 - 1 - IMPASSABLE TO MOTORIZED VEHICLES
 - 2 - RESTRICTED/LEGALLY GATED ADMIN USE
 - 3 - BARRIERED/LEGALLY NO ADMIN USE
 - 4 - OPEN DURING BEAR SEASON
 - - - Decommissioned
- ClosureAreas**
 - ClosureRoads
 - American Forest Management
 - FS
 - MT_State
 - Other_Private
 - Stimson_Lumber
- Water
- Section
- TownRng
- State Boundaries



K. Miller
7/15/2021 09:12
Acres from IR
North American 1983 Datum - LattLong Grid