

# Cougar Rock Complex



## Incident Action Plan

**Saturday**

**July 10, 2021**

**Operational Period 0600 - 2200**

*Virtual Check-In QR Code*



# INCIDENT OBJECTIVES

1. Incident Name  
Cougar Rock Complex

2. Date Prepared  
07/09/2021

3. Time Prepared  
2000

## 4. Objectives

### High Value Assets and Resources to be Protected:

- Timber resources
- Historic, cultural, and heritage sites
- Threatened, endangered and sensitive species' habitat.

### Leader's Intent:

- Protect human life. Firefighter and public safety will be given the highest priority at all times. Risks to firefighters and the public will be managed by utilizing a risk-based approach to decision making.
- Minimize the exposure of the public and responders to transmission or infection from COVID-19 by following agency guidance, and established CDC, local, state and national guidance to ensure a healthy work environment.
- Communicate proactively with adjacent agency staffs, cooperators, permittees and stakeholders through effective and timely dialogues, meetings and comprehensive information sharing.
- Inform the Forest PAO of any public meetings and media contacts and coordinate with the Forest PAO to ensure that we build on existing relationships, contacts and key messages..
- Utilize appropriate fire strategies to minimize fire impacts to residences, commercial properties, critical community infrastructure and natural resources, and critical watersheds.
- Implement appropriate measures to limit the spread of noxious weeds, including washing all vehicles and equipment upon arrival at the incident and departure from the incident.
- Work with agency staff and cooperators to assess wildfire effects to infrastructure and watersheds and develop and implement short-term actions to address high-risk watershed impacts.
- Commit incident resources only where there is a high probability of meeting reasonable objectives or when the risk of injury or death can be mitigated.
- Follow and adhere to the 10 standard orders. Continually evaluate the 18 watch out situations through clear concise direction and understanding of assignments and necessary mitigations.
- Maintain and foster relationships with users of public lands, landowners, agencies and local communities.
- Adhere to applicable work-rest guidelines to reduce fatigue and ensure that assigned fire-fighting personnel receive adequate rest.
- Maintain a workplace and atmosphere of mutual respect and free of any harassment. There will be no tolerance for any unethical, illegal drug or alcohol related incidents.
- Effectively manage costs commensurate with the high value assets and resources to be protected and risks.
- Efficiently demobilize resources in a manner that will ensure safe travel and "right-sizing" consistent with demobilization glidepath direction.

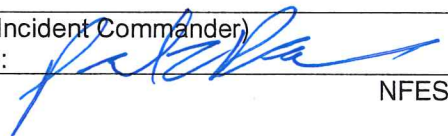
### Operational Objectives:

- Scout for and measure for prioritization potential fire suppression and values at risk protection opportunities.
- Gather intelligence on personnel and equipment on scene.
- Respond as appropriate and commensurate with prioritization to new/emerging incidents

5. Prepared By (Planning Section Chief)  
Mike Rubenstein:



6. Approved By (Incident Commander)  
Paul Roose (t):



ORGANIZATION ASSIGNMENT LIST		9. Operations Section	
1. Incident Name  Cougar Rock Complex		Branch I Chief - Line	Joe Brabender, Danny Lemer (t)
		Branch II Chief- Line	Don Hammack, Manny Mendoza (t)
		Chief - Planning	Ron Naber
		<b>a. Branch I</b>	
2. Date 07/09/2021	3. Time 2000	Director	Ben Wagner, Jerod Russell (t)
4. Operational Period 07/10/2021 0600 - 2200		Deputy	
		Division/Group	
		Division/Group	
		Division/Group	
<b>5. Incident Commander and Staff</b>		Division/Group	
Incident Commander	Jay Winfield, Paul Roose (t)	Division/Group	
Deputy Incident Commander	Bob Fry	Division/Group	
Safety Officers	Marvin Carpenter, Jim Freestone	<b>b. Branch II</b>	
Information Officer	Jill Cobb, Nick Cronquist, Joe Holzinger (t)	Director	Mike West, RJ Hannah
Liaison Officer	Chris Grove, Keith Brink	Deputy	
<b>6. Agency Representatives</b>		Division/Group	
Agency	Name	Division/Group	
CPTPA Agency Admin	Rich McMillan	Division/Group	
IDL Agency Admin	Rick Arcano	Division/Group	
ARMY Agency Admin	Ken Marshall	Division/Group	
NCF FS Agency Admin	Stefani Spencer	Division/Group	
		<b>c.</b>	
		Director	
		Deputy	
<b>7. Planning Section</b>		Division/Group	
Chief	Will Bernard, Mike Rubenstein	Division/Group	
Deputy		Division/Group	
Resources Unit	Jody Pettit	Division/Group	
Demobilization Unit	John Noneman (t)	Division/Group	
Documentation Unit	Janice Fleming	Division/Group	
Situation Unit	Chad Ramsey, Roger Jackson	Division/Group	
Fire Behavior Analyst	Eric Trimble, Nate Lancaster	<b>d. Air Operations Branch</b>	
Incident Technology Support	Ed Yeager Bryce Nodgren	Air Operations Branch Director	Sal Garcia
GISS	Andrew Mock, Sam Tripp (t)	Air Attack Supervisor	
Status Check-In Recorder	Cynthia Wharton (t)	Air Support Supervisor	
		Helicopter Coordinator	
		Air Tanker Coordinator	
		<b>10. Finance Section</b>	
		Chief	Bertalee Mottern
<b>8. Logistics Section</b>		Time Unit	Annette Hoyer
Chief	Tyler Rae, Jeremy Walla	Equipment Time Recorder	Lisa Hawdon
Supply Unit	Bryan Connelly	Personnel Time Recorder	Mary Dykstra, Nolan Baldwin (t)
Facilities Unit	AJ Amadeo (t)	Cost Unit	Lisa Dickinson (t)
Ground Support Unit		Comp Claims	Suzanne Vernon (t)
Communications Unit	Thomas Robbins	INBA	Wanemah Hulett
Medical Unit	Teri Miller	Prepared by (Resource Unit Leader)  Jody Pettit - RESL	
Security Unit			
Food Unit	Tyre Holfeltz		

## Fire Weather Forecast

FORECAST NO: 1  
PREDICTION FOR: Day SHIFT  
SHIFT DATE: Saturday, 07-10-2021

NAME OF FIRE: Cougar Rock Complex  
UNIT: CPTPA  
SIGNED: Nathan Lancaster, FBAN

### TIME AND DATE

FORECAST ISSUED: 1900 08-29-2013

---

**WEATHER DISCUSSION:** For Cougar Rock Complex Branch II

Stronger high pressure will result in a generally warmer airmass with surface cooling and stabilization after sunset. Smoke cover from regional fires will also thicken overnight and persist through at least late morning which will hold low level inversions in place. Weak terrain winds expected.

### **Today Saturday July 10:**

WEATHER: Sunny

TEMPERATURES: Fire: 68-78

HUMIDITY: Fire: 27-37 percent

WINDS: Variable around 5 mph.

HAINES INDEX: 4 Low LAL: 1 CWR: 0%

---

**WEATHER DISCUSSION:** For Cougar Rock Complex Branch I

High confidence exists for a warming and drying trend Saturday as high pressure strengthens across central Idaho. Southwest winds will develop by the late morning to the early afternoon hours Saturday. Gusts up to 11 mph are expected on midslopes and ridges Saturday afternoon and early evening. Thermal belts will lead to poor RH recovery tonight and Saturday night onridges and midslopes.

### **Today Saturday July 10:**

WEATHER: Sunny

TEMPERATURES: Fire: 88 to 93

HUMIDITY: Fire: 10 to 15 percent

WINDS: RIDGETOP: upslope 3-7 mph in the afternoon with gusts to 11 mph.

HAINES INDEX: 4 Low LAL: 1 CWR: 0%

---

### **EXTENDED FORECAST: Sunday-Thursday**

Sunday...Sunny. Highs 91. Calm becoming West around 5 mph in afternoon.

Sunday Night..... Lows 62. West northwest wind 5 to 7 mph becoming calm in the evening.

Monday...Sunny. Lows 64. Highs 93.

Tuesday... Sunny. Lows 64. Highs 92.

Wednesday... Sunny. Lows 64. Highs 93.

Thursday... Sunny. Lows 61. Highs 88.

---

## FIRE BEHAVIOR FORECAST

<b>FORECAST NUMBER:</b> 01	<b>INCIDENT TYPE:</b> Wildfire
<b>FIRE NAME:</b> Cougar Rock Complex	<b>OPERATIONAL PERIOD:</b> July 10, 2021 Saturday
<b>DATE ISSUED:</b> July 09, 2021	<b>TIME ISSUED:</b> 1800
<b>UNIT:</b> ID-CPTPA	<b>PREPARED BY:</b> Eric Trimble/Nate Lancaster – FBAN

### INPUTS

**WEATHER SUMMARY:**

**Sky Weather:** Hot, Sunny

**CWR (>0.10"): 0%**

**Max Temps:** 88-92°

**Min RH:** 15-20% **Haines:** 4 (Low). **LAL:** 1

**Winds (20 ft):** SW 3-7 mph w/gusts up to 10 mph on ridges.

**FUELS:****Cougar Rock Complex:**

Mixed conifer forest dominated by DF, WL, GF and WRC. All age and size classes of conifer fuels with relatively high crown bulk density and low crown base heights. Light to moderate amounts of dead fine fuels and logging/thinning slash will contribute to surface fire spread. Herbaceous and live woody fuels are green and will generally not contribute to fire spread.

**Fine Fuels:** 4-6%; **10-hr:** 8%; **100hr:** 13%; **1000hr:** 14%

**ERC:** >98<sup>th</sup> percentile.

### OUTPUTS - FIRE BEHAVIOR

**Specific:****Cougar Rock Complex:**

Terrain and fuel-driven fire. Expect active surface fire activity within surface and ground fuels with single to small group-tree torching and short-range spotting. Highest activity to occur on the steeper slopes (>60%) with 70-80% consumption of the 1-hr, 10-hr and 100-hr fuels. On and off-site smoke, live hardwood fuels and young conifer plantations will generally discourage crown fire growth.

Backing/flanking spread 1-2 ft/min with flames 2-4 ft. Head fire with possible 5-8 ft. flame lengths and 8-12 ft/min rates of spread on the steeper sites, higher with torching. Spotting will significantly increase by afternoon as the inversion breaks and as receptive fuels continue to warm and dry.

**Probability of Ignition (PIG): 75-85%** during the peak of the burning period.


**AIR OPERATIONS:** Expect poor visibility in the morning. Inversion expected to lift by early afternoon

**SAFETY:** Maintain good situational awareness as conditions become conducive for moderate fire growth.

ASSIGNMENT LIST		1. Branch	2. Division/Group			
3. Incident Name Cougar Rock Complex		4. Operational Period Date: 07/10/2021 Time: 0600-2200				
5. Operations Personnel						
Operations Chief - Line	Joe Brabender, Danny Lemer (t)	Branch Director	Ben Wagner, Jerod Russell (t)			
Operations Chief - Planning	Ron Naber	Air Branch Director	Sal Garcia			
6. Resources Assigned This Period						
Strike Team/Task Force/ Resource Designator	Last Shift	Leader	No. Pers.	Trans. Needed	Drop Off PT./Time	Pick Up PT./Time
Jumpers			18	N		
Safety Jim Freestone			1	N		
7. Control Operations						
<p><b>Task:</b> Scout Hobbit 1, Hobbit 2, Goat Creek, Scott, Merrimix and Trapper Saddle fires for potential fire suppression and values at risk protection opportunities.            Gather accurate intel on personnel and equipment on scene.  <b>Purpose:</b> Prioritize fire suppression and values at risk protection efforts with limited resource availability.  <b>End State:</b> All fires within the Branch I area have a viable fire suppression/values at risk protection plan.</p>						
8. Special Instructions						
Utilize LCES prior to engaging fires.						
9. Division/Group Communication Summary						
Function	Frequency - RX	Frequency - TX	Tone	Channel	Comments	
					SEE COMM PLAN	
Prepared by (RESL) Jody Pettit		Approved by (PSC2) Mike Rubenstein		Date 07/09/2021	Time 2000	

ASSIGNMENT LIST		1. Branch	II		2. Division/Group	
3. Incident Name Cougar Rock Complex		4. Operational Period Date: 07/10/2021		Time: 0600-2200		
5. Operations Personnel						
Operations Chief - Line	Don Hammack, Manny Mendoza (t)		Branch Director	Mike West, RJ Hannah		
Operations Chief - Planning	Ron Naber		Air Branch Director	Sal Garcia		
6. Resources Assigned This Period						
Strike Team/Task Force/ Resource Designator	Last Shift	Leader	No. Pers.	Trans. Needed	Drop Off PT./Time	Pick Up PT./Time
Rappelers			8	N		
Timber Crew			4	N		
Safety Jim Freestone			1	N		
7. Control Operations						
<p><b>Task:</b> Scout Butte Creek, Lovell Knob, Crampton Creek, Benton Ridge and Benton Rock Pit fires for potential fire suppression and values at risk protection opportunities. Scout Owl, Sheep, Washington and Smith fire for potential values at risk protection opportunities. Gather accurate intel on personnel and equipment on scene.</p> <p><b>Purpose:</b> Prioritize fire suppression and values at risk protection efforts with limited resource availability.</p> <p><b>End State:</b> All fires within the Branch II area have a viable fire suppression/values at risk protection plan.</p>						
8. Special Instructions						
<p>4 FS fires are prioritized as follows: Owl (1), Sheep (2), Washington (3) and Smith (4). Utilize LCES prior to engaging fires.</p>						
9. Division/Group Communication Summary						
Function	Frequency - RX	Frequency - TX	Tone	Channel	Comments	
					SEE COMM PLAN	
Prepared by (RESL) Jody Pettit		Approved by (PSC2) Mike Rubenstein		Date 07/09/2021	Time 2000	



INCIDENT RADIO COMMUNICATIONS PLAN		Incident Name Cougar Rock Complex				Date/Time Prepared 7/9/2021 1500		Operational Period Date/Time 7/10/2021 0700 – 7/11/2021 0700	
Ch #	Function	Channel Name	Assignment	RX Freq N or W	RX Tone	TX Freq N or W	Tx Tone	Mode	Remarks
1	REPEATER	CPTPA 1	All Resources	159.2700 N	97.4	151.2050 N	97.4	A	PRIMARY ELK BUTTE GRANGEVILLE DISPATCH
2	DIRECT	CT DIR 1	All Resources	159.2700 N	97.4	159.2700 N	97.4	A	PRIMARY DIRECT
3	REPEATER	CPTPA 2	All Resources	153.0650 N	97.4	158.1600 N	97.4	A	2ND REPEATER ELK BUTTE
4	DIRECT	CT DIR 2	All Resources	153.0650 N	97.4	153.0650 N	97.4	A	2ND DIRECT
5	REPEATER	CPTPA 3	All Resources	153.3200 N	192.8	158.2950 N	192.8	A	3RD REPEATER BALD MOUNTAIN
6	DIRECT	CT DIR 3	All Resources	153.3200 N	136.5	153.3200 N	136.5	A	3RD DIRECT
7	REPEATER	FIRE DISP	All Resources	155.1000 N		152.9050 N	100.0	A	FIRE DISPATCH CLEARWATER
8	REPEATER	FIRE NET	All Resources	154.0400 N		156.0825 N	114.8	A	CLEARWATER COUNTY 2ND
9	DIRECT	IDL A2GS	All Resources	151.1450 N		151.1450 N	100.0	A	STATEWIDE AIR/GUARD
10	Tactical	ILD DIR2	All Resources	159.2850 N	77.0	159.2850 N	77.0	A	ILD STATEWIDE TACTICAL
11	REPEATER	COTTON	All Resources	159.4650 N	136.5	151.2650 N	136.5	A	ILD CM COTTONWOOD BUTTE
12	REPEATER	TEAKEAN	All Resources	159.3000 N	123	151.3250 N	100.0	A	IDL ORO TEAKEAN BUTTE
13	REPEATER	WOODRAT	All Resources	159.4500 N	136.5	151.3100 N	100.0	A	IDL MC ON WOODRAT
14	DIRECT	BLUE	All Resources	154.2950 N		154.2950 N			CLEARWATER MUTUAL AID
15	REPEATER	CCSO NRT	All Resources	155.0250 N	141.3	151.4000 N	141.3	A	CLEARWATER NORTON KNOB
16		NOAA 500	All Resources	162.5000 N				W	NOAA WEATHERON NORTON KNOB
Prepared By (Communications Unit)		Thomas Robbins COML 		Incident Location		OROFINO, ID			

The convention calls for frequency lists to show four digits after the decimal place, followed by either an "N" or a "W", depending on whether the frequency is narrow or wide band. Mode refers to either "A" or "D" indicating analog or digital (e.g. Project 25) or "M" indicating mixed mode. All channels are shown as if programmed in a control station, mobile or portable radio. Repeater and base stations must be programmed with the Rx and Tx reversed.



# HEALTH AND SAFETY MESSAGE

*SAFETY* starts with *YOU*

We are ALL accountable for SAFE behaviors

INCIDENT:  
**Cougar Rock Complex**

DATE: July 10, 2021  
TIME: Day 0600-2000

## Major Hazards and Risks:

Fire weakened trees  
Poor excess

Steep terrain with rolling material  
Narrow canyons

Animals on roadways  
Vehicle travel

## Quote of the Day

“Your first duty and highest obligation is safety, for your crew and others”  
by unknown

## HAZARDOUS ATTITUDES

Invulnerable – That can't happen to us

Anti-authority – Disregard of the team effort

Impulsive – Do something even if it's wrong

Macho – Trying to impress or prove something

Resigned – We can't make a difference

Group Think – Afraid to speak up or disagree

**Attitude is 10% what happens to us,**

**and 90% is how we react to it.**

## TRANSITION DAY!!

### CHANGE of COMMAND

- Risks to fireline personnel increase significantly during change of command.
- There is a high potential for fatalities, serious injuries or incidents during the transfer.
- Mitigate risks thru proper mitigation methods.
- Know who you work for at all times. Be extra alert during the change of command.

## QUESTIONS THAT COULD SAVE YOUR LIFE

- Who is in charge?
- Are all hazards identified, and have you made them known?
- Communications?
- Weather? Hot and Dry/Wet.
- Confusion?
- Is there a safer way to do it?
- Can you justify your actions?
- Is this flight necessary?

## Your Safety Team

Marvin Carpenter, and Jim Freestone.

Remember Each of **You** are safety Officers!!

## MEDICAL PLAN (ICS 206 WF)

<b>1. Incident/ project name and address:</b>	<b>2. Operational Period: Date/Time</b>
Cougar Rock Complex	7-10-2021 0700-1900

### 3. Ambulance Services

Name	Complete address	Phone & EMS Frequency	ALS ✓
Clearwater County Ambulance	1195 Riverside Ave, Orofino	911 208-476-3771	X
Boat transport- Ken Marshal	Army Corp Engineers Orofino	208-716-0910	

### 4. Air Ambulance Services

Name	Location/remarks	Phone & EMS Frequency	ALS ✓	hoist ✓	night ✓
Life Flight Network	Lewiston ID	911 800-232-0911	X		
Two Bear air	Whitefish , MT	406-297-2121		X	X



### 5. Hospitals

cougar	Phone	Level of care	Heli Pad ✓	Lat long	Travel time to hosp: min's Air      Ground	
Clearwater Valley Hospital	208-476-4555	Critical access	x	N 46 29.191 W 116 15.576'		4
Sacred Heart Medical center	509-455-3131	Level 2 trauma	X	N 47 38.947' W 117 24.778'		160
St. Joseph Regional Medical Center	208-743-2511	Level 2 trauma		N 46 25.016' W 117 01.449'		59
Harborview burn center	206-744-5735	Burn center	x	47.6034° N 122.3236° W		365

### 6. Area Location Capability

Branch, Div, Group	Aid Station Name; Responders	Equipment available	Emergency frequency	Ambulance ETA to site: min's Air      Ground		Nearby Helispot &/or DP	Helispot &/or DP lat/long (DD mm.mmm') Datum WGS 84
ICP	MEDL/EMP Teri Miller	ALS			4		

**7. Notes, special procedures:** Use Medical Incident Report for medical response and Medical Incident Pre-Planning worksheet for briefing. Medical Emergencies should be reported in accordance with Lolo/Kootenai Forest procedures.

8. Prepared by (Medical Unit Leader)	9. Date/Time	10. Reviewed by (Safety Officer)	11. Date/Time
 Teri Miller	7/9/21 2100	 Marvin Carpenter	7/9/21 1700

## ASSIGNMENT-SPECIFIC MEDICAL EMERGENCY ACTION PLAN

### Pre-Planning for today's assignment

What are the likely hazards that could cause injuries? What kind of severe injuries?		
Who is the likely in-charge DIVS or overhead for an emergency in your assigned area today? (i.e. "Division Zulu")		
Who are the Medical personnel assigned to your part of the incident? What are their capabilities?		
Other Emergency Responders: fire dept., crash rescue, ambulance?		
Communications: Command channel, Air to Ground, Medical helicopters, local rescue/medical?		
Transportation methods available	Ground vehicle, drop point, coordinates, travel route?	
	Aircraft I.D, Helispot names, coordinates? Hoist capable, internal transport	
	Other available methods - contingency	
Most likely workforce for evacuation		

### Response checklist

#### **Who takes charge?**

- DIVS or designated Overhead manages the overall scene and evacuation process.
- Medical personnel and emergency responders manage patients and assist in rescue/extrication.
- OPS and IC make command decisions so the emergency can be given full attention and management. They continue to manage ongoing incident operations.

#### **Response sequence:**

- First, secure the scene and protect responders and patients from further injury. Render first aid.
- Clear the Command channel for "Emergency Traffic only" if this is a critical emergency. If not, inform Communications of non-critical-emergency status and use normal communications.
- Contact closest Medical personnel and DIVS or designated Overhead for response.

**Information for Communications:** Medical Incident Report – See last page of IAP and IRPG pages 118 and 119.

**Helicopter Extraction Operations:** See IRPG pages 116 and 117.

**Severe Weather:** In the event of forecasted severe weather, implement Incident Severe Weather Plan.

**Incident Within Incident:** Upon arriving at the incident, all overhead should obtain and review the team's Incident Within Incident Plan.

**BUTTE CREEK FIRE  
ID-CTS-000485  
CHECK-IN PROCESS**

A virtual check-in process has been established for all resources checking into the Butte Fire (ID-CTS-000485). **IF YOU HAVE NOT CHECKED INTO THE BUTTE CREEK FIRE, PLEASE DO SO IMMEDIATELY.** You will need a cell or internet connection to fill out the check-in form.



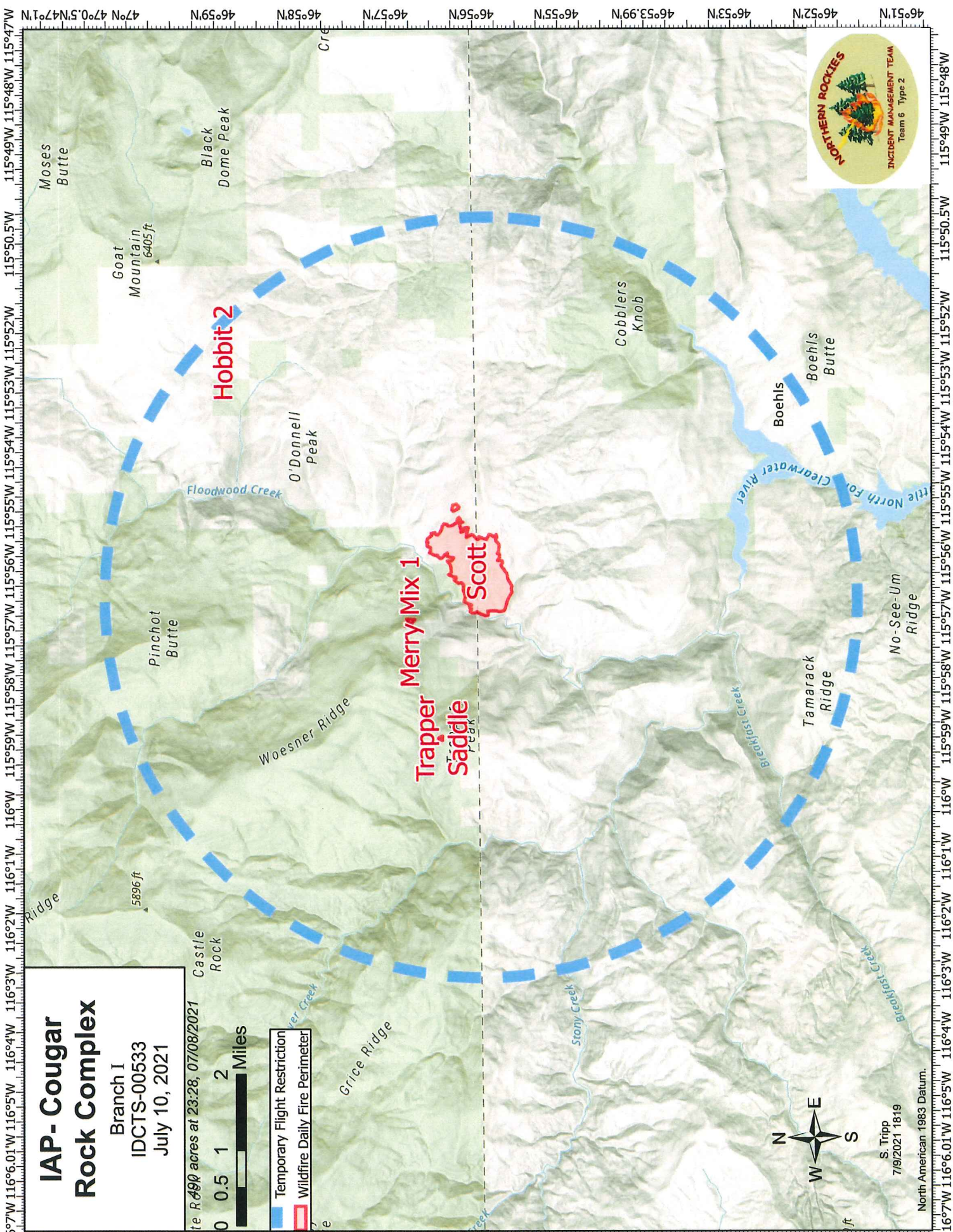
Scan this QR code or use the following link to access the check-in form:

[https://forms.office.com/Pages/ResponsePage.aspx?id=4F2CSwVwPUuaFHhBHyhmA0gTTqHWRNxOia\\_q3fHR5whUME45MVRTSVdBUIZHMFo2MjBPOVZEUII5SiQIQCN0PWcu](https://forms.office.com/Pages/ResponsePage.aspx?id=4F2CSwVwPUuaFHhBHyhmA0gTTqHWRNxOia_q3fHR5whUME45MVRTSVdBUIZHMFo2MjBPOVZEUII5SiQIQCN0PWcu)

If you have questions or cannot fill out the virtual check-in form for any reason, send an email to [2021.idcts\\_buttecreek\\_resources@firenet.gov](mailto:2021.idcts_buttecreek_resources@firenet.gov) or call the incident Status Check-In Recorder at 423-341-1243 between the hours of 0600 - 2200.

**ALSO CONTACT FINANCE** at [2021.idcts\\_buttecreek\\_finance@firenet.gov](mailto:2021.idcts_buttecreek_finance@firenet.gov) or at 208-820-4661 between the hours of 0600 - 2200.





# IAP- Cougar Rock Complex

Branch I  
IDCTS-00533  
July 10, 2021

1990 acres at 23:28, 07/08/2021

- ▬ Temporary Flight Restriction
- Wildfire Daily Fire Perimeter



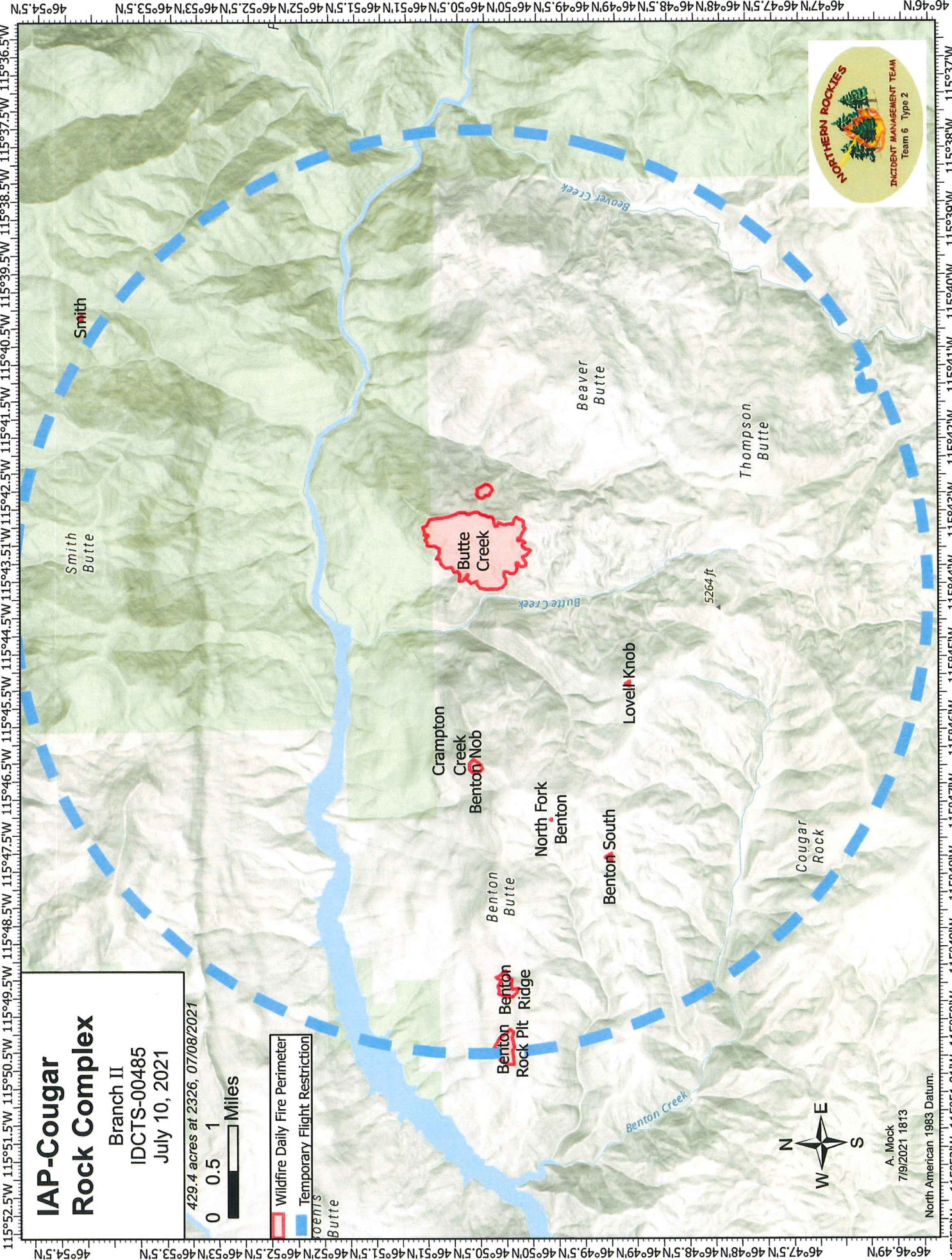
S. Tripp  
7/9/2021 18:19

North American 1983 Datum.



46°51'N 115°49'W 115°48'W 115°47'W  
46°52'N 115°50'W 115°49'W 115°48'W  
46°53'N 115°51'W 115°50'W 115°49'W  
46°53.99'N 115°52'W 115°51'W 115°50'W  
46°55'N 115°53'W 115°52'W 115°51'W  
46°56'N 115°54'W 115°53'W 115°52'W  
46°57'N 115°55'W 115°54'W 115°53'W  
46°58'N 115°56'W 115°55'W 115°54'W  
46°59'N 115°57'W 115°56'W 115°55'W  
47°N 47°0.5'N 47°1'N 115°58'W 115°57'W 115°56'W 115°55'W 115°54'W 115°53'W 115°52'W 115°51'W 116°W 116°1'W 116°2'W 116°3'W 116°4'W 116°5'W 116°6'W 116°7'W 116°8'W 116°9'W 116°10'W 116°11'W 116°12'W 116°13'W 116°14'W 116°15'W 116°16'W 116°17'W 116°18'W 116°19'W 116°20'W 116°21'W 116°22'W 116°23'W 116°24'W 116°25'W 116°26'W 116°27'W 116°28'W 116°29'W 116°30'W 116°31'W 116°32'W 116°33'W 116°34'W 116°35'W 116°36'W 116°37'W 116°38'W 116°39'W 116°40'W 116°41'W 116°42'W 116°43'W 116°44'W 116°45'W 116°46'W 116°47'W 116°48'W 116°49'W 116°50'W 116°51'W 116°52'W 116°53'W 116°54'W 116°55'W 116°56'W 116°57'W 116°58'W 116°59'W 117°W

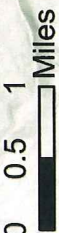




# IAP-Cougar Rock Complex

Branch II  
IDCTS-00485  
July 10, 2021

429.4 acres at 2326, 07/08/2021



- Wildfire Daily Fire Perimeter
- Temporary Flight Restriction



A. Mock  
7/9/2021 1813

North American 1983 Datum.

46°46'N 115°52'W 115°51'W 115°50'W 115°49'W 115°48'W 115°47'W 115°46'W 115°45'W 115°44'W 115°43'W 115°42'W 115°41'W 115°40'W 115°39'W 115°38'W 115°37'W 115°36'W 115°35'W 115°34'W

46°46'N 115°52'W 115°51'W 115°50'W 115°49'W 115°48'W 115°47'W 115°46'W 115°45'W 115°44'W 115°43'W 115°42'W 115°41'W 115°40'W 115°39'W 115°38'W 115°37'W 115°36'W 115°35'W 115°34'W

# ACTIVITY LOG (ICS 214)

<b>1. Incident Name:</b>	<b>2. Operational Period:</b>	Date From: Date Time From: HHMM	Date To: Date Time To: HHMM
<b>3. Name:</b>	<b>4. ICS Position:</b>	<b>5. Home Agency (and Unit):</b>	
<b>6. Resources Assigned:</b>			
Name	ICS Position	Home Agency (and Unit)	
<b>7. Activity Log:</b>			
Date/Time	Notable Activities		
<b>8. Prepared by:</b> Name:	Position/Title:	Signature: _____	
ICS 214, Page 1	Date/Time: Date		



# MEDICAL PLAN (ICS 206 WF)

Controlled Unclassified Information//Basic

Medical Incident Report					
<b>FOR A NON-EMERGENCY INCIDENT, WORK THROUGH CHAIN OF COMMAND TO REPORT AND TRANSPORT INJURED PERSONNEL AS NECESSARY.</b>					
<b>FOR A MEDICAL EMERGENCY: IDENTIFY ON SCENE INCIDENT COMMANDER BY NAME AND POSITION AND ANNOUNCE "MEDICAL EMERGENCY" TO INITIATE RESPONSE FROM IMT COMMUNICATIONS/DISPATCH.</b>					
<b>Use the following items to communicate situation to communications/dispatch.</b>					
<b>1. CONTACT COMMUNICATIONS / DISPATCH</b> (Verify correct frequency prior to starting report) <i>Ex: "Communications, Div. Alpha. Stand-by for Emergency Traffic."</i>					
<b>2. INCIDENT STATUS:</b> Provide incident summary (including number of patients) and command structure. <i>Ex: "Communications, I have a Red priority patient, unconscious, struck by a falling tree. Requesting air ambulance to Forest Road 1 at (Lat./Long.) This will be the Trout Meadow Medical, IC is TFLD Jones. EMT Smith is providing medical care."</i>					
Severity of Emergency / Transport Priority	<input type="checkbox"/> <b>RED / PRIORITY 1 Life or limb threatening injury or illness. Evacuation need is IMMEDIATE</b> <i>Ex: Unconscious, difficulty breathing, bleeding severely, 2° – 3° burns more than 4 palm sizes, heat stroke, disoriented.</i> <input type="checkbox"/> <b>YELLOW / PRIORITY 2 Serious Injury or illness. Evacuation may be DELAYED if necessary.</b> <i>Ex: Significant trauma, unable to walk, 2° – 3° burns not more than 1-3 palm sizes.</i> <input type="checkbox"/> <b>GREEN / PRIORITY 3 Minor Injury or illness. Non-Emergency transport</b> <i>Ex: Sprains, strains, minor heat-related illness.</i>				
Nature of Injury or Illness & Mechanism of Injury			<i>Brief Summary of Injury or Illness (Ex: Unconscious, Struck by Falling Tree)</i>		
Transport Request			<i>Air Ambulance / Short Haul/Hoist Ground Ambulance / Other</i>		
Patient Location			<i>Descriptive Location &amp; Lat. / Long. (WGS84)</i>		
Incident Name			<i>Geographic Name + "Medical" (Ex: Trout Meadow Medical)</i>		
On-Scene Incident Commander			<i>Name of on-scene IC of Incident within an Incident (Ex: TFLD Jones)</i>		
Patient Care			<i>Name of Care Provider (Ex: EMT Smith)</i>		
<b>3. INITIAL PATIENT ASSESSMENT:</b> Complete this section for each patient as applicable (start with the most severe patient)					
Patient Assessment: See IRPG page 106					
Treatment:					
<b>4. TRANSPORT PLAN:</b>					
Evacuation Location (if different): (Descriptive Location (drop point, intersection, etc.) or Lat. / Long.) Patient's ETA to Evacuation Location:					
Helispot / Extraction Site Size and Hazards:					
<b>5. ADDITIONAL RESOURCES / EQUIPMENT NEEDS:</b>					
<i>Example: Paramedic/EMT, Crews, Immobilization Devices, AED, Oxygen, Trauma Bag, IV/Fluid(s), Splints, Rope rescue, Wheeled litter, HAZMAT, Extrication</i>					
<b>6. COMMUNICATIONS: Identify State Air/Ground EMS Frequencies and Hospital Contacts as applicable</b>					
Function	Channel Name/Number	Receive (RX)	Tone/NAC *	Transmit (TX)	Tone/NAC *
COMMAND					
AIR-TO-GRND					
TACTICAL					
<b>7. CONTINGENCY: Considerations:</b> If primary options fail, what actions can be implemented in conjunction with primary evacuation method? Be thinking ahead.					
<b>8. ADDITIONAL INFORMATION:</b> Updates/Changes, etc.					
<b>REMEMBER:</b> Confirm ETA's of resources ordered. Act according to your level of training. Be Alert. Keep Calm. Think Clearly. Act Decisively.					