

IAP
Graham Ridge
IDCAS-000377
07/12/2021, Day
10 acres at 07/09 21:00 hrs

- Helispot
- Drop Point
- Hot Spot - Spot Fire
- Fire Origin
- Other
- Water Source
- Wildfire Daily Fire Perimeter

Coal Spot 1

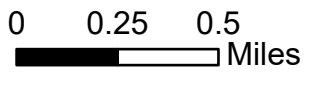
July 7, 0730

Coal Spot 2

Turn Around

Road Closure

Graham Mountain



JB
7/11/2021 2010
Acres from GPS
North American 1983 Datum. LatLong
Grid, State Plane

Geospatial Technology and A

Service
VERA

IAP - Character Complex

Deceitful IDIPF-000421
Appx 1044 ac as of 7/10 at 2030 hrs

Prichard IDIPF-000392
Appx 183 ac as of 7/10 at 2030 hrs

7/12, Day

Div B

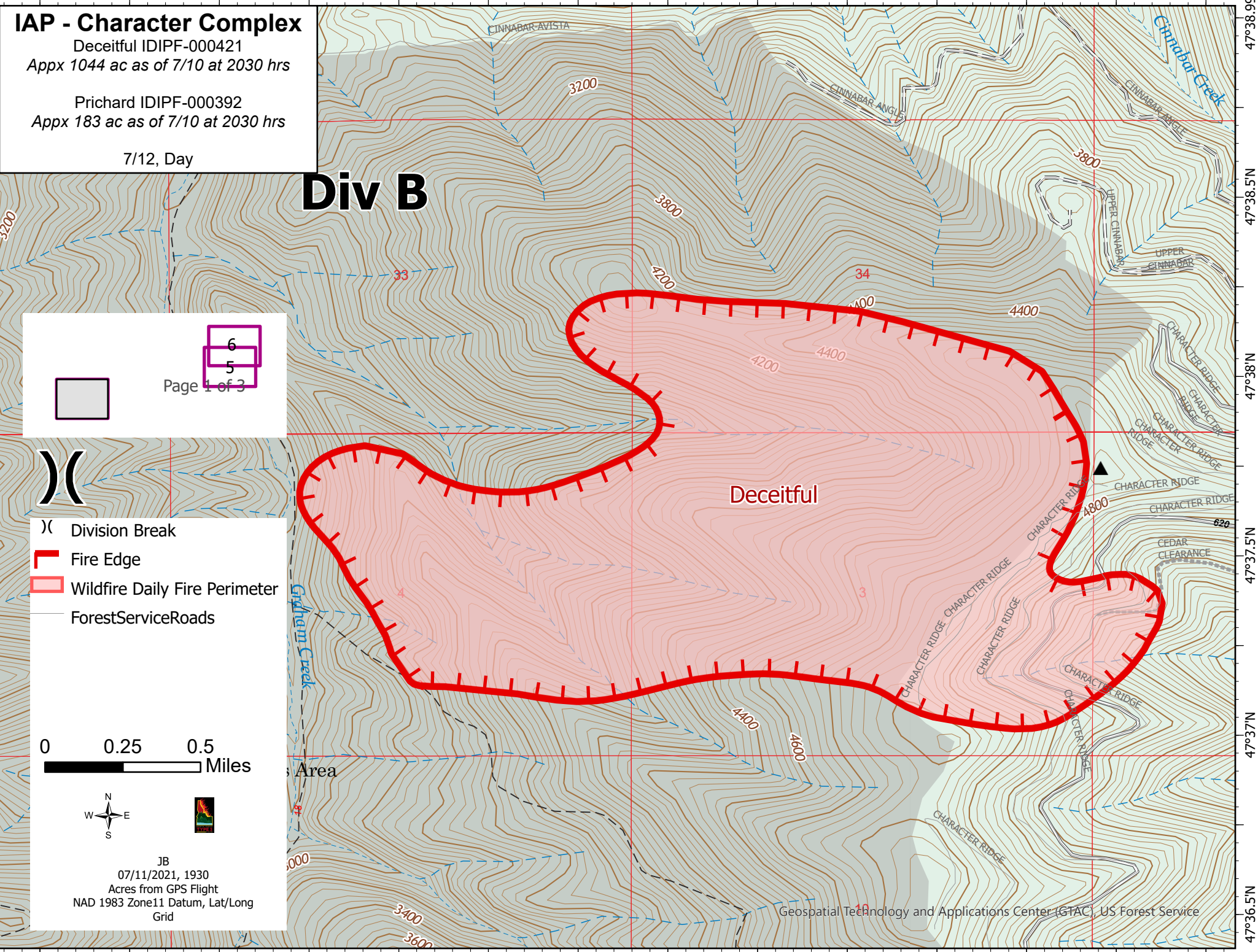
Page 1 of 3

- Division Break
- Fire Edge
- Wildfire Daily Fire Perimeter
- Forest Service Roads

0 0.25 0.5 Miles



JB
07/11/2021, 1930
Acres from GPS Flight
NAD 1983 Zone11 Datum, Lat/Long
Grid



IAP - Character Complex

Deceitful IDIPF-000421
Appx 1044 ac as of 7/10 at 2030 hrs

Prichard IDIPF-000392
Appx 183 ac as of 7/10 at 2030 hrs

7/12, Day

Div D

Prichard

10

2

Eagle Spike

Page 2 of 3

4 5 6

- Helispot
- Division Break
- Drop Point
- Camp
- Fire Edge
- Wildfire Daily Fire Perimeter
- ForestServiceRoads

0 0.25 0.5 Miles



JB
07/11/2021, 1930
Acres from GPS Flight
NAD 1983 Zone11 Datum, Lat/Long
Grid

IAP - Character Complex

Deceitful IDIPF-000421
Appx 1044 ac as of 7/10 at 2030 hrs

Prichard IDIPF-000392
Appx 183 ac as of 7/10 at 2030 hrs

7/12, Day

4

Page 3 of 3

- Helispot
- ⌘ Division Break
- Other
- ▬ Fire Edge
- ▬ Wildfire Daily Fire Perimeter
- ▬ ForestServiceRoads

0 0.25 0.5 Miles



JB
07/11/2021, 1930
Acres from GPS Flight
NAD 1983 Zone11 Datum, Lat/Long
Grid

Div D

Prichard

Road Closed

Clee Creek Rd

W Fork Eagle Creek Rd

W Fork Eagle Creek Rd