

Character Complex
ID-IPF-000458

Deceitful ID-IPF-000431
 Fire Perimeter as of
 08/14/2021 0015 hrs
 7,832 Acres
 North American 1983 Datum

- Pump
- Dip Site
- Drop Point
- Fire Edge

- Contained Line
- Transmission Line
- Paved Roads
- Trail
- Roads (IDL)
- Forest Service Land

Geospatial Technology and Applications Center (GTAC), US Forest Service

Page 1

Page 2

Page 6

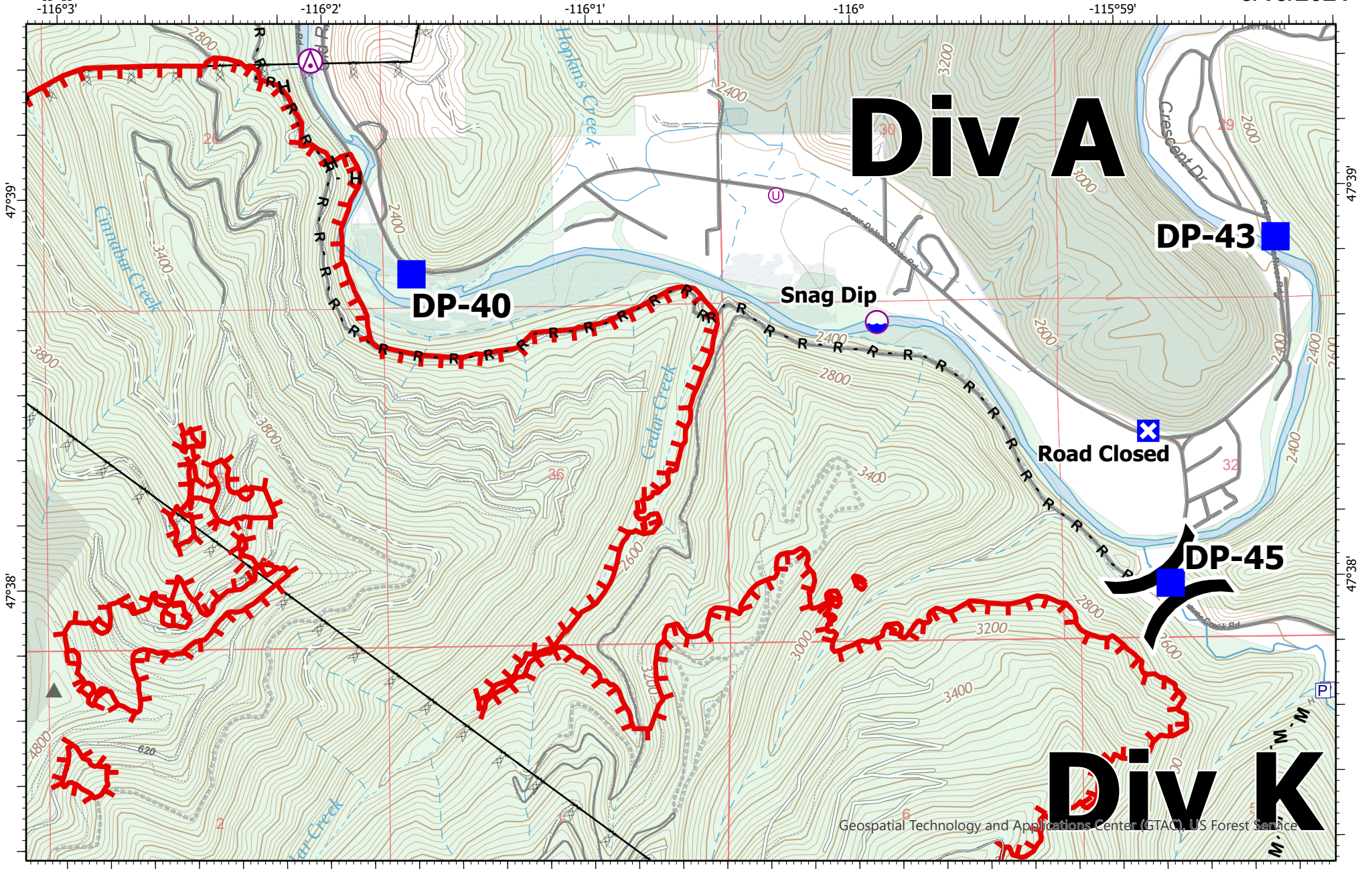
Page 5

Page 3

Page 7

Page 8

Page 1 of 8



Character Complex
ID-IPF-000458
 Deceitful ID-IPF-000431
 Fire Perimeter as of
 08/14/2021 0015 hrs
 7,832 Acres
 North American 1983 Datum

- Pump
- Aerial Hazard
- Dip Site
- Unimproved Landing Area
- Division Break

- Drop Point
- Closure
- Completed Hand Line
- Completed Mixed Construction Line
- Completed Road as Line

- H - Planned Hand Line
- Access or Improved Road
- Fire Edge
- Contained Line
- Transmission Line

- Paved Roads
- Trail
- Roads (IDL)
- Forest Service Land



Page 1 Page 2
 Page 6 Page 5
 Page 4 Page 3
 Page 7 Page 8
 Page 2 of 8

-115°58'

-115°57'

-115°56'

-115°55'

47°37'

47°37'

47°36'

47°36'

-115°59'














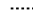


-115°58'

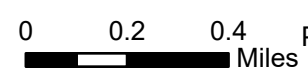
-115°57'

-115°56'

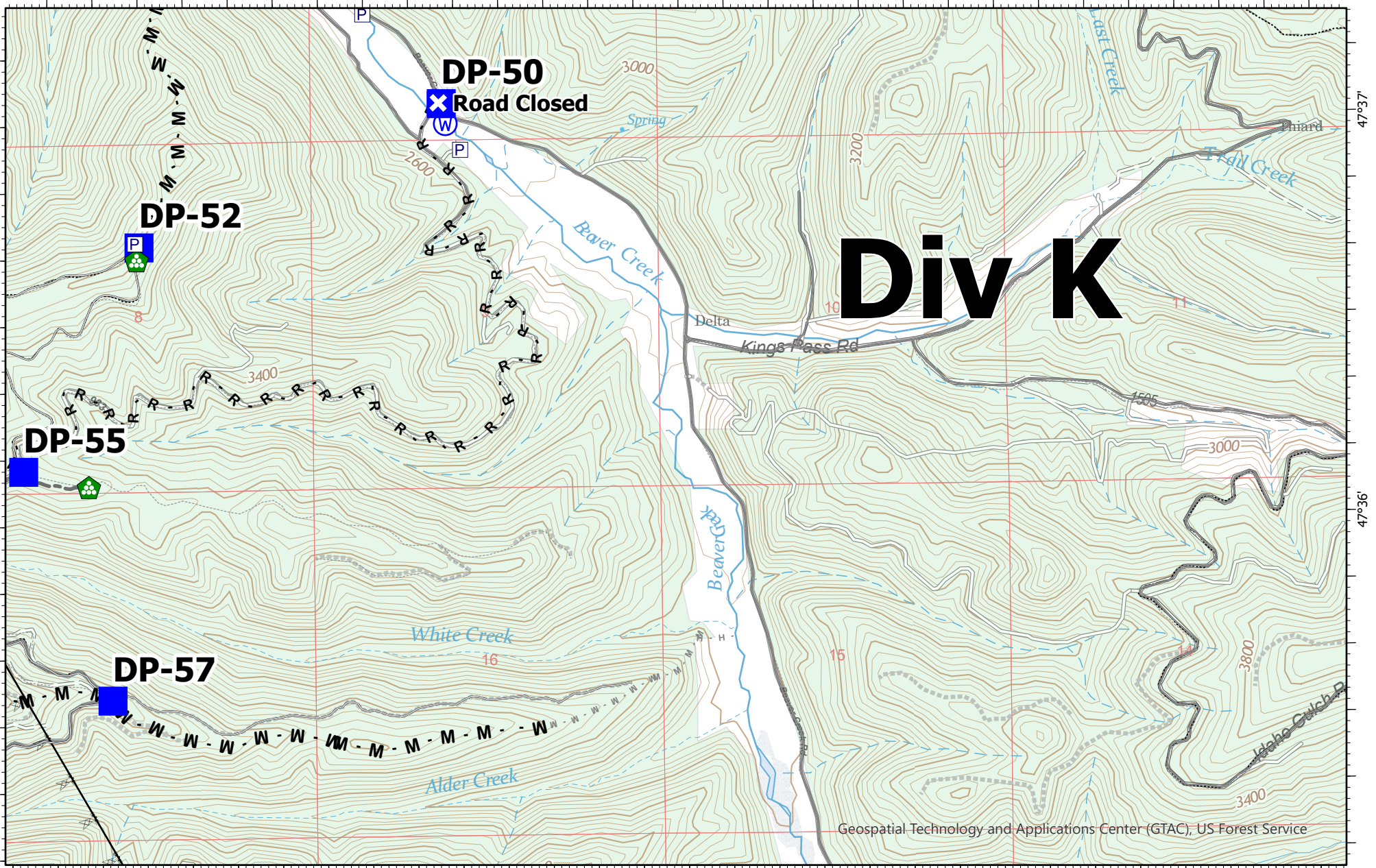
-115°55'

Character Complex
ID-IPF-000458
 Deceitful ID-IPF-000431
 Fire Perimeter as of
 08/14/2021 0015 hrs
 7,832 Acres
 North American 1983 Datum

-  Pump
-  Drop Point
-  Closure
-  Landing or Log Deck
-  Water Source
-  Completed Mixed Construction Line
-  Completed Road as Line
-  Planned Hand Line
-  Planned Mixed Construction Line
-  Access or Improved Road
-  Other
-  Transmission Line
-  Paved Roads
-  Trail
-  Roads (IDL)
-  Forest Service Land

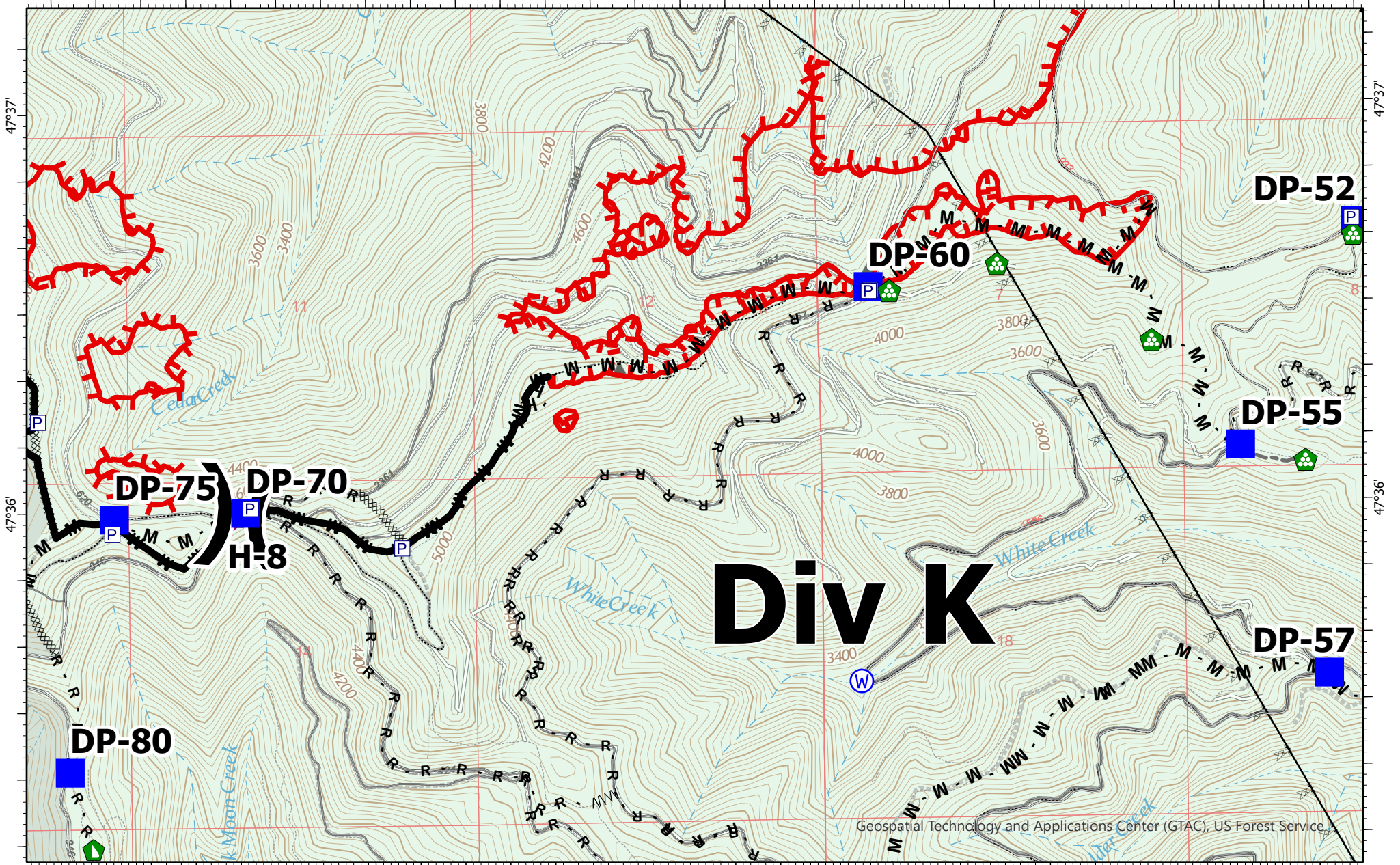


Page 1 Page 2
 Page 6 Page 5
 Page 4 Page 3
 Page 7 Page 8



Geospatial Technology and Applications Center (GTAC), US Forest Service

-116°3' -116°2' -116°1' -116° -115°59'

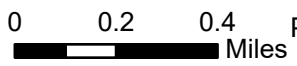


Character Complex
ID-IPF-000458
 Deceitful ID-IPF-000431
 Fire Perimeter as of
 08/14/2021 0015 hrs
 7,832 Acres
 North American 1983 Datum

- Pump
- Helispot
- Division Break
- Drop Point
- Other
- Landing or Log Deck
- Dozer Push
- Water Source
- Completed Dozer Line
- Completed Fuel Break
- Completed Hand Line
- Completed Mixed Construction Line
- Completed Road as Line
- Access or Improved Road
- Other
- Fire Edge
- Contained Line
- Transmission Line
- Paved Roads
- Trail
- Roads (IDL)
- Forest Service Land

Div K

Geospatial Technology and Applications Center (GTAC), US Forest Service



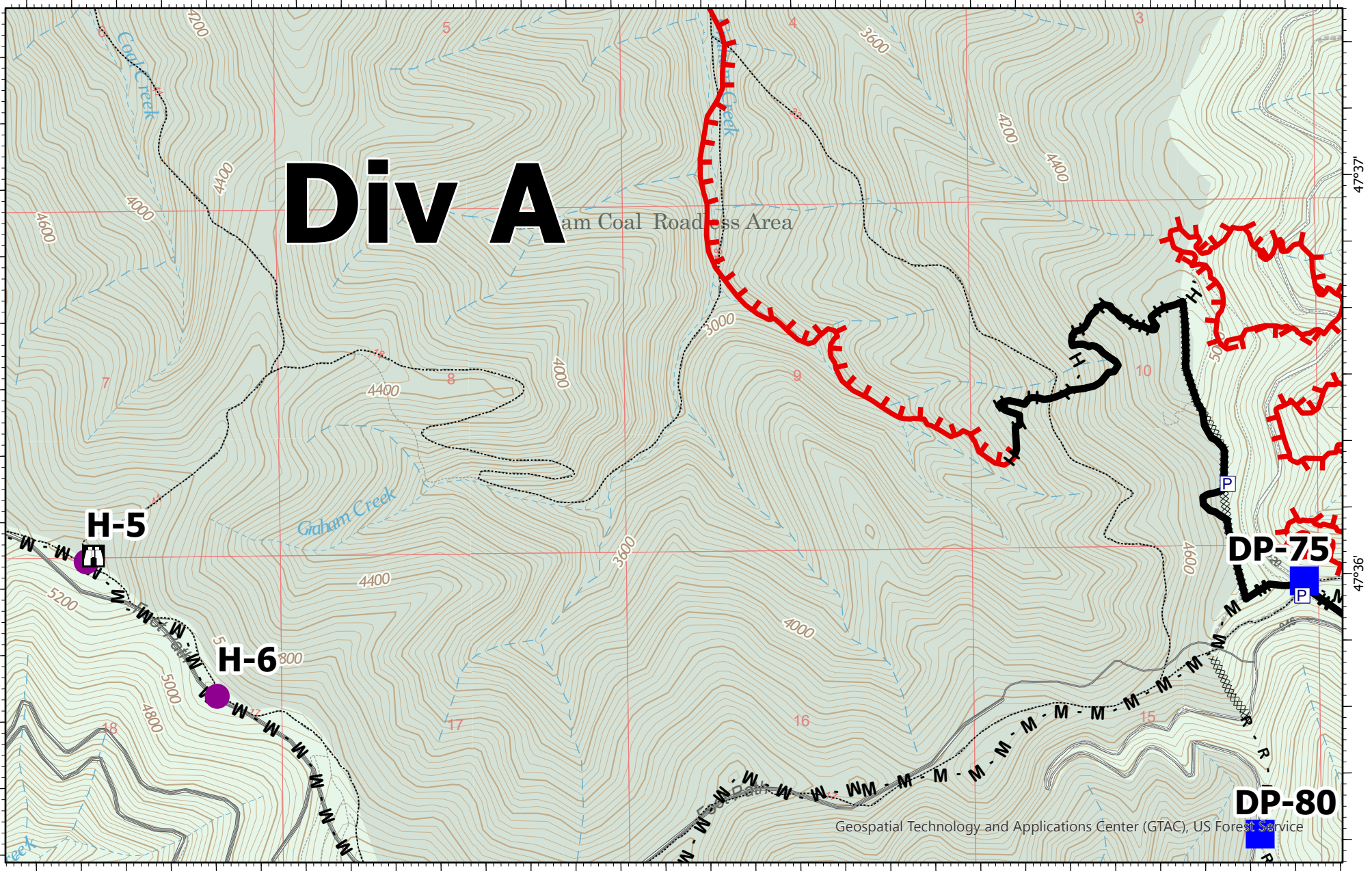
-116°7' -116°6' -116°5' -116°4' -116°3'

47°37' 47°36'

47°37' 47°36'

Div A

am Coal Roadless Area



Geospatial Technology and Applications Center (GTAC), US Forest Service

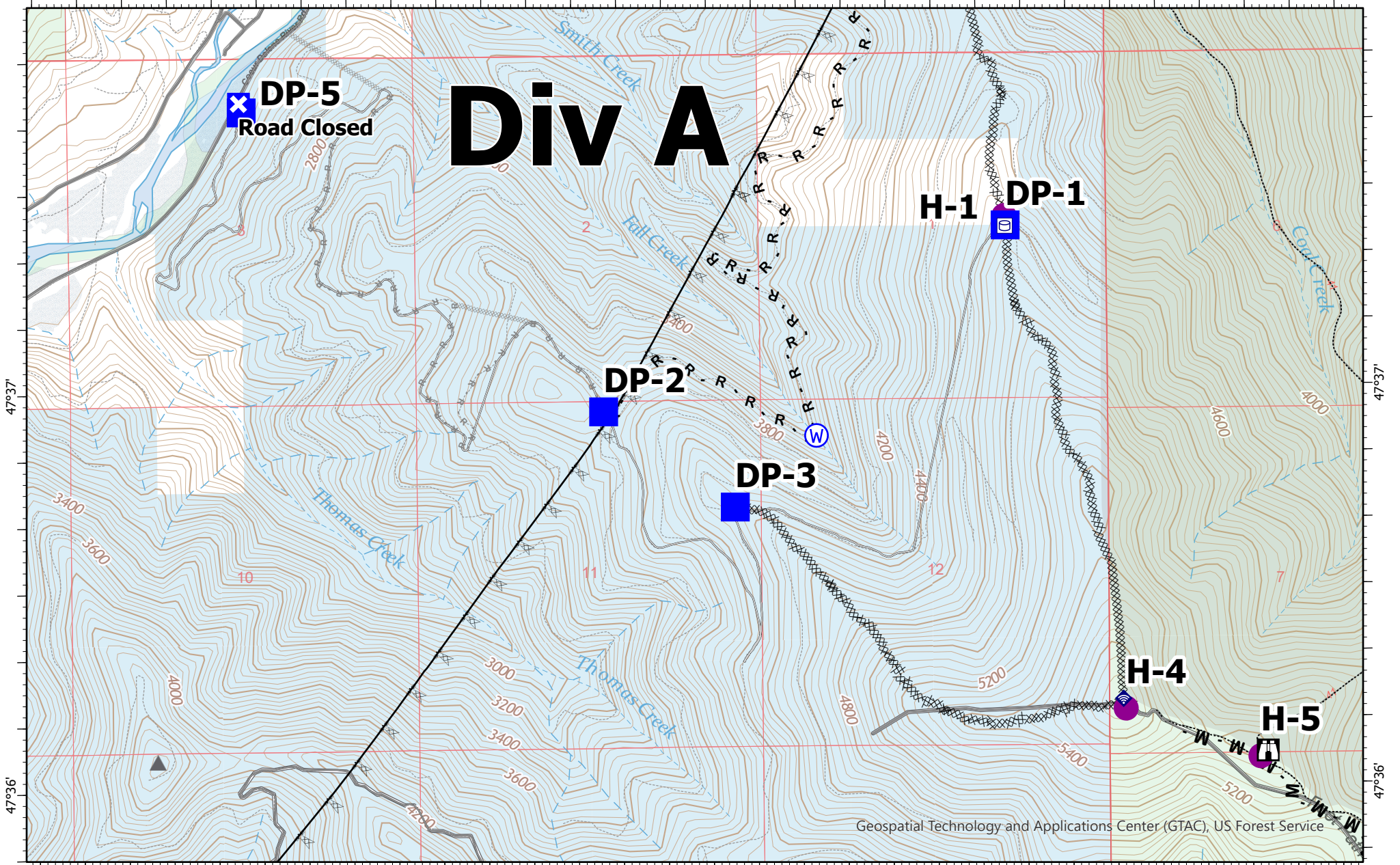
Character Complex
ID-IPF-000458
 Deceitful ID-IPF-000431
 Fire Perimeter as of
 08/14/2021 0015 hrs
 7,832 Acres
 North American 1983 Datum

- Pump
- Helispot
- Drop Point
- Lookout
- Dozer Push
- Internet Access

- Completed Dozer Line
- Completed Hand Line
- Completed Mixed Construction Line
- Completed Road as Line
- Access or Improved Road
- Fire Edge
- Contained Line
- Paved Roads
- Trail
- Roads (IDL)
- Forest Service Land

0 0.2 0.4 Miles

-116°12' -116°11' -116°10' -116°9' -116°8'



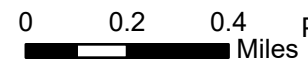
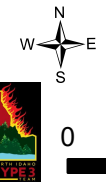
Character Complex
ID-IPF-000458
 Deceitful ID-IPF-000431
 Fire Perimeter as of
 08/14/2021 0015 hrs
 7,832 Acres
 North American 1983 Datum

- Water Tank
- Helispot
- Drop Point
- Closure
- Lookout

- Internet Access
- Water Source
- Completed Dozer Line
- Completed Mixed Construction Line
- Completed Road as Line

- Planned Dozer Line
- Planned Road as Line
- Access or Improved Road
- Transmission Line
- Paved Roads

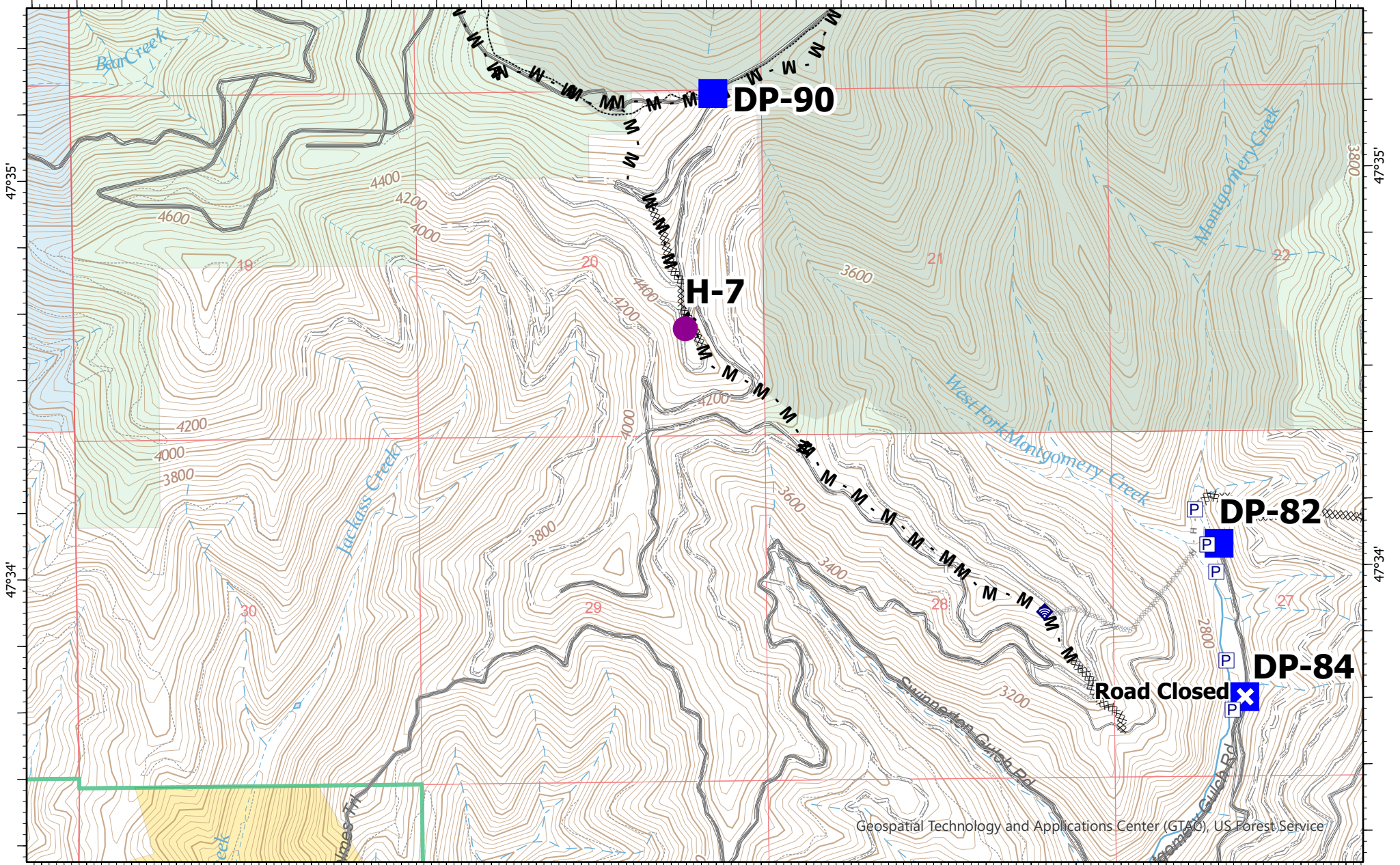
- Trail
- Roads (IDL)
- Forest Service Land
- Other State Lands



Page 1 Page 2
 Page 6 Page 5 Page 3
 Page 7 Page 8
 Page 6 of 8

Geospatial Technology and Applications Center (GTAC), US Forest Service

-116°8' -116°7' -116°6' -116°5' -116°4'



47°34'

47°35'

47°34'

-116°8' -116°7' -116°6' -116°5' -116°4'

Character Complex
ID-IPF-000458
 Deceitful ID-IPF-000431
 Fire Perimeter as of
 08/14/2021 0015 hrs
 7,832 Acres
 North American 1983 Datum

- Pump
- Helispot
- Drop Point
- Closure
- Dozer Push
- Internet Access
- Water Source
- Completed Dozer Line
- Completed Mixed Construction Line
- Planned Dozer Line
- Planned Hand Line
- Access or Improved Road
- Paved Roads
- Trail
- Roads (IDL)
- Forest Service Land
- Other State Lands
- Bureau of Land Management Lands

Geospatial Technology and Applications Center (GTAO), US Forest Service

0 0.2 0.4 Miles

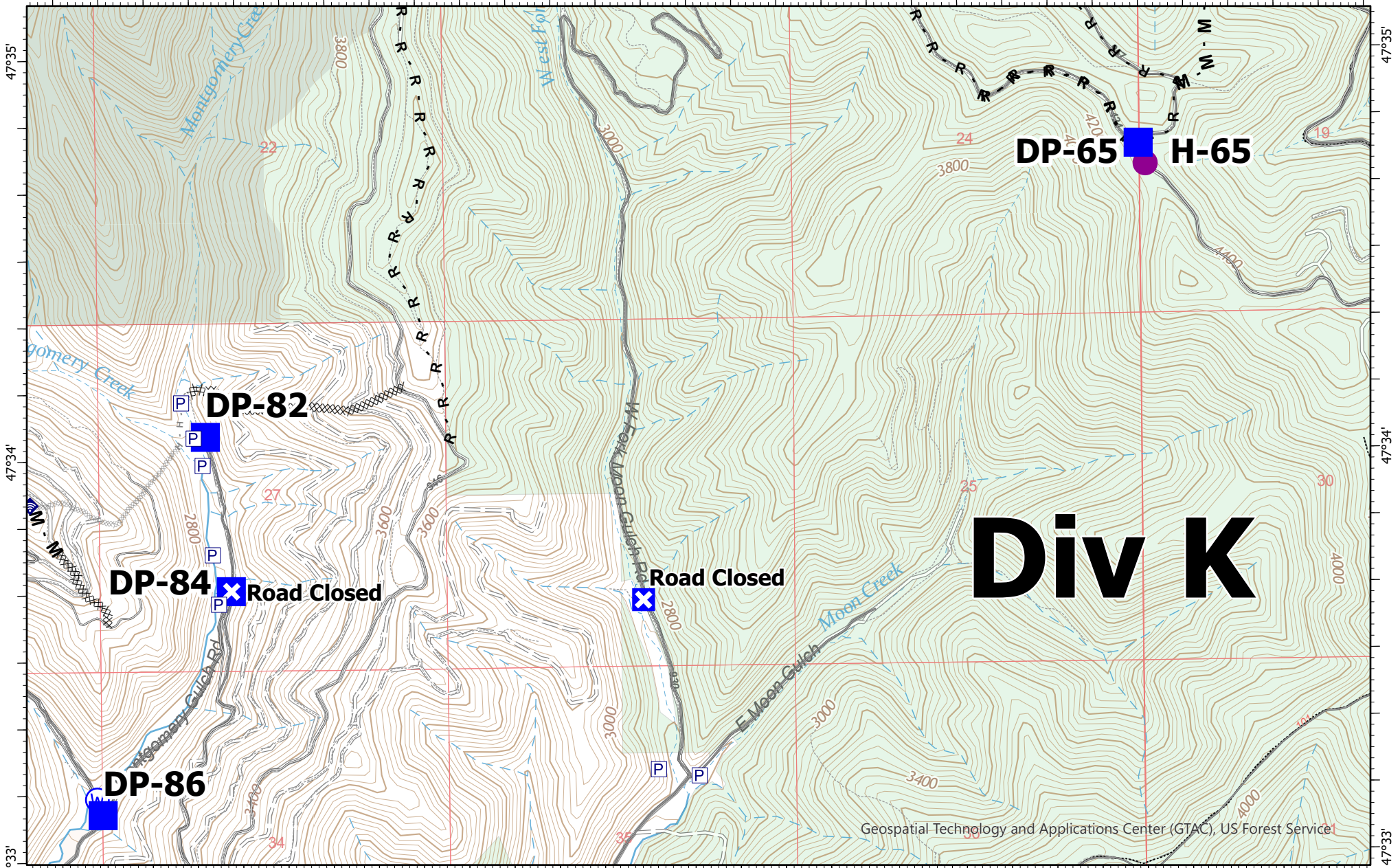
-116°4'

-116°3'

-116°2'

-116°1'

-116°



Div K

Geospatial Technology and Applications Center (GTAC), US Forest Service

Character Complex
ID-IPF-000458
 Deceitful ID-IPF-000431
 Fire Perimeter as of
 08/14/2021 0015 hrs
 7,832 Acres
 North American 1983 Datum

- | | | |
|-----------------|-----------------------------------|-------------------------|
| Pump | Water Source | Access or Improved Road |
| Helispot | Completed Dozer Line | Paved Roads |
| Drop Point | Completed Mixed Construction Line | Trail |
| Closure | Completed Road as Line | Roads (IDL) |
| Dozer Push | Planned Dozer Line | Forest Service Land |
| Internet Access | Planned Hand Line | |

0 0.2 0.4 Miles

Page 1 Page 2
 Page 6 Page 5 Page 3
 Page 7 Page 8
 Page 8 of 8