

Cougar Rock Complex

ID-CTS-000623

PNN5HF



Incident Action Plan

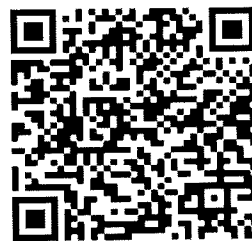
Monday



July 12, 2021

Operational Period 0600 - 2200

Virtual Check-In

Got Maps? IAP?



| INCIDENT OBJECTIVES | 1. Incident Name Cougar Rock Complex | 2. Date Prepared 07/11/2021 | 3. Time Prepared 1900 |
|---|---|--|--------------------------|
| <p>4. Objectives</p> <p><u>High Value Assets and Resources to be Protected:</u></p> <ul style="list-style-type: none"> • Private properties, infrastructure and timber resources. • Habitat and watershed, cultural, historic, and heritage sites. • Waterways and riparian areas. <p><u>Leader's Intent:</u></p> <ul style="list-style-type: none"> • Protect human life. Firefighter and public safety will be given the highest priority at all times. Risks to firefighters and the public will be managed by utilizing a risk-based approach to decision making. An emphasis will be placed on exposure to accidents and heat related illness. • Minimize the exposure of the public and responders to transmission or infection from COVID-19 by following agency guidance and established CDC, local, state and national guidance to ensure a healthy work environment. • Communicate proactively with agency staffs, cooperators, permittees and stakeholders, including PotlatchDeltic, Idaho Department of Lands, United States Army Corps of Engineers, United States Forest Service, the Nez Perce Tribe, and the Clearwater County Sheriff, Emergency Management Coordinator and County Commissioners, through effective and timely dialogues, meetings and comprehensive information sharing for purposes to include public safety, evacuations, traffic control, road closures, structure protection and any other safety risk to public and industrial operators. • Inform the Agency Administrator and Association Line Officer of any public meetings and media contacts and coordinate with the Clearwater IDL and CPTPA to ensure that we build on existing relationships, contacts and key messages. • Utilize appropriate fire strategies to minimize fire impacts to residences, commercial properties, critical community infrastructure and natural resources, and critical watersheds. • Implement appropriate measures to limit the spread of noxious weeds, including washing all vehicles and equipment upon arrival at the incident and departure from the incident. • Work with agency staff and cooperators to assess wildfire effects to infrastructure and watersheds and develop and implement short-term actions to address high-risk watershed impacts. • Commit incident resources only where there is a high probability of meeting reasonable objectives or when the risk of injury or death can be mitigated. • Follow and adhere to the 10 standard orders. Continually evaluate the 18 watch out situations through clear concise direction and understanding of assignments and necessary mitigations. • Maintain and foster relationships with users of public lands, landowners, agencies and local communities. • Maintain the highest degree of professionalism on the incident and within local communities. • Adhere to applicable work-rest guidelines to reduce fatigue and ensure that assigned fire-fighting personnel receive adequate rest. • Maintain a workplace and atmosphere of mutual respect and free of any harassment. There will be no tolerance for any unethical, illegal drug or alcohol related incidents. • Effectively manage costs commensurate with the high value assets and resources to be protected and risks. • Efficiently demobilize resources in a manner that will ensure safe travel and "right-sizing" consistent with demobilization glidepath direction. <p><u>Operational Objectives:</u></p> <ul style="list-style-type: none"> • Scout for and prioritize potential fire suppression and values at risk protection opportunities. • Gather intelligence on personnel and equipment on the incident. • Engage in fire suppression and/or values at risk protection actions and/or point protection when safe to do so with available resources. • Respond as appropriate to, and commensurate with the prioritization of, new/emerging incidents. • Act with appropriate prioritization if presented with the opportunity to rehabilitate resource damage caused by suppression actions. | | | |
| <p>5. Prepared By (Planning Section Chief) Mike Rubenstein: </p> | | <p>6. Approved By (Incident Commander) Paul Roose (t): </p> | |

| ORGANIZATION ASSIGNMENT LIST | | 9. Operations Section | | |
|---|--|---|------------------------------------|-------------------------------------|
| 1. Incident Name Cougar Rock Complex | | Branch 1 Chief - Line | Joe Brabender, Danny Lemer (t) | |
| | | Branch 2 Chief - Line | Don Hammack, Manny Mendoza (t) | |
| | | Chief - Planning | Ron Naber | |
| | | a. Branch 1 | | |
| 2. Date 07/11/2021 | | 3. Time 2000 | | Director |
| | | | | Deputy |
| 4. Operational Period 07/12/2021 0600 - 2200 | | Division/Group | Hobbit Fire Group | Ben Wagner, Paul Wagner (t) |
| | | Division/Group | Scott Fire Group | Jerod Russell, David Gregory (t) |
| 5. Incident Commander and Staff | | Division/Group | | |
| Incident Commander | Jay Winfield, Paul Roose (t), Rich Cowger (t) | Division/Group | | |
| Deputy Incident Commander | Bob Fry | Division/Group | | |
| Safety Officers | Marvin Carpenter, Jim Freestone | b. Branch 2 | | |
| Information Officer | Jill Cobb, Nick Cronquist, Joe Holzinger (t) | Director | | |
| Liaison Officer | Chris Grove | Deputy | | |
| 6. Agency Representatives | | Division/Group | Benton Fire Group | RJ Hannah |
| Agency | Name | Division/Group | Butte Creek Fire Group | Mike West |
| CPTPA | Kane Steinbruecker | Division/Group | FS Fire Group | |
| PotlatchDeltic | Rich McMillan | Division/Group | | |
| IDL - St. Joe | Rick Arcano | Division/Group | | |
| IDL - Clearwater | Keith Brink | Division/Group | | |
| Army Corps. of Engineers | Paul Pencil | Division/Group | | |
| USFS - NPF | Stefani Spencer | c. | | |
| Nez Perce Tribe Liaison | Christy Bradbury | Director | | |
| 7. Planning Section | | Deputy | | |
| Chief | Will Bernard, Mike Rubenstein | Division/Group | | |
| Resources Unit | Jody Pettit | Division/Group | | |
| Demobilization Unit | John Noneman (t) | Division/Group | | |
| Documentation Unit | Jan Fleming | Division/Group | | |
| Situation Unit | Roger Jackson | Division/Group | | |
| Fire Behavior Analyst | Eric Trimble, Nate Lancaster | d. Air Operations Branch | | |
| Incident Technology Support | Ed Yeager, Bryce Nodgren | Air Operations Branch Director | Sal Garcia | |
| GISS | Andrew Mock, Sam Tripp (t) | Air Attack Supervisor | | |
| Status Check-In Recorder | Cynthia Wharton | Air Support Supervisor | | |
| | | Helicopter Coordinator | | |
| | | Air Tanker Coordinator | | |
| | | 10. Finance Section | | |
| 8. Logistics Section | | Chief | Bertalee Mottern | |
| | | Time Unit | Annette Hoyer | |
| Chief | Tyler Rae, Jeremy Walla | Equipment Time Recorder | Lisa Hawdon | |
| Supply Unit | Bryan Connelly | Personnel Time Recorder | Mary Dykstra, Nolan Baldwin (t) | |
| Facilities Unit | AJ Amadeo (t) | Cost Unit | Lisa Dickinson (t) | |
| Ground Support Unit | | Comp Claims | Suzanne Vernon (t) | |
| Communications Unit | Thomas Robbins | INBA | Wanemah Hulett | |
| Medical Unit | Teri Miller, Gwen Couture | Prepared by (Resource Unit Leader) Jody Pettit | | |
| Security Unit | | | | |
| Food Unit | Tyre Hofeltz | | | |

Fire Weather Forecast

FORECAST NO: 3
PREDICTION FOR: Day SHIFT
SHIFT DATE: Monday, 07-12-2021

NAME OF FIRE: Cougar Rock Complex
UNIT: CPTPA
SIGNED: Eric Trimble/Nathan Lancaster, FBAN

TIME AND DATE
FORECAST ISSUED: 1900 7/11/2021

WEATHER DISCUSSION: For Cougar Rock Complex (Scott, Trapper Saddle, Hobbits 1, Goat Creek)

A drier air mass behind a dry front will keep RH recoveries poor this morning. High pressure ridge will strengthen over central Idaho Monday bringing a return to hot conditions with low RH's. Strong valley inversions will begin to lift after 1400.

Today Monday, July 12:

WEATHER: Sunny with smoke through noon

TEMPERATURES: Fire: 88-93°F

HUMIDITY: Fire: 14-19%

WINDS (20ft): Upslope/Upvalley: 2-4 mph.

HAINES INDEX: 4 Low **LAL:** 1 **CWR:** 0%

WEATHER DISCUSSION: For Cougar Rock Complex (Butte Creek, Benton Ridge Fires, Lovell Knob, Sheep, Owl)

A drier air mass behind a dry front will keep RH recoveries poor this morning. High pressure ridge will strengthen over central Idaho Monday bringing a return to hot conditions with low RH's. Strong valley inversions will begin to lift after 1400.

Today Monday, July 12:

WEATHER: Sunny

TEMPERATURES: Fire: 88 to 93°F

HUMIDITY: Fire: 13-18%

WINDS (20ft): East 5 mph in the morning becoming terrain driven (upslope/upvalley) 2-4 mph.

HAINES INDEX: 5 Moderate **LAL:** 1 **CWR:** 0%

EXTENDED FORECAST: Tuesday-Sunday

Tuesday... Clear. Lows 60's. Highs 90's. Terrain driven winds 1-3 mph.

Wednesday... Clear. Lows 60's. Highs 90's. Winds (20ft): NW 5-10 mph.

Thursday... Clear. Lows 60. Highs 90's. Winds (20ft): West 5-10 mph.

Friday... Clear. Lows 60's, Highs 80's. Winds (20ft): West 10-15 mph.

Saturday....Clear. Lows 60's. Highs 90's.

Sunday..... Mostly Clear. Lows 60's. Highs 90's.

FIRE BEHAVIOR FORECAST

| | |
|---------------------------------------|--|
| FORECAST NUMBER: 03 | INCIDENT TYPE: Wildfire |
| FIRE NAME: Cougar Rock Complex | OPERATIONAL PERIOD: July 12, 2021 Monday |
| DATE ISSUED: July 11, 2021 | TIME ISSUED: 1800 |
| UNIT: ID-CPTPA | PREPARED BY: Eric Trimble/Nate Lancaster – FBAN |

INPUTS

WEATHER SUMMARY:

Sky Weather: Sunny with smoke, **CWR** (>0.10"): 0%, **Temps:** 88-93°, **RH:** 13-18%, **Haines:** 4 to 5 (low to moderate), **LAL:** 1
Winds (20 ft): upslope/upvalley 2-4 mph.

FUELS: Cougar Rock Complex- 12 fires

Mixed conifer forest dominated by WRC, DF, WL, and GF. SAF, ES and LPP at the higher elevations (>4,800'). All age and size classes of conifer fuels with relatively high crown bulk density and low crown base heights. Light to moderate amounts of dead fine fuels and logging/thinning slash will contribute to surface fire spread. Herbaceous and live woody fuels are green and will generally not contribute to fire spread.

Fine Fuels: 2-5%; **10-hr:** 7%; **100hr:** 9%; **1000hr:** 13%

ERC: 90th to 97th percentile. **Max spotting distance:** 0.2 Mile

OUTPUTS - FIRE BEHAVIOR

General:

Terrain and fuel-driven fire. Expect active surface fire activity within surface and ground fuels with single to small group-tree torching and short-range spotting. Highest activity to occur within SAF/ES stands at the higher peaks and on the steeper sites (>60% slope) with 70-80% consumption of the 1-hr, 10-hr and 100-hr fuels. On and off-site smoke, live hardwood fuels and young conifer plantations will generally discourage crown fire growth.

Backing/flanking spread 1-2 ft/min with flames 2-4 ft. Head fire with possible 5-8 ft. flame lengths and 8-12 ft/min rates of spread on the steeper sites, higher with torching and when slope and wind align. Spotting will increase as the inversion breaks and as receptive fuels continue to warm and dry.

Specific:

Butte Creek and Scott Road: Continued growth around fire perimeter.

Hobbit and Goat Creek: A free roaming fire will want to spread uphill to the East, towards Goat Mountain.

Probability of Ignition (PIG): 70-80% during the peak of the burning period.

AIR OPERATIONS: Dense smoke in the morning. Inversion is expected to lift by 1400.

SAFETY: Maintain LCES and good situational awareness.

| ASSIGNMENT LIST | | 1. Branch | 2. Division/Group | | | |
|---|--------------------------------|-----------------------|-----------------------------|-----------------|-------------------|------------------|
| | | 1 | Hobbit Fire Group | | | |
| 3. Incident Name | | 4. Operational Period | | | | |
| Cougar Rock Complex | | Date: 07/12/2021 | | Time: 0600-2200 | | |
| 5. Operations Personnel | | | | | | |
| Operations Chief - Line | Joe Brabender, Danny Lemer (t) | Branch Director | Ben Wagner, Paul Wagner (t) | | | |
| Operations Chief - Planning | Ron Naber | Air Branch Director | Sal Garcia | | | |
| 6. Resources Assigned This Period | | | | | | |
| Strike Team/Task Force/ Resource Designator | Last Shift | Leader | No. Pers. | Trans. Needed | Drop Off PT./Time | Pick Up PT./Time |
| Redding Jumpers | | Mitch Goodson | 8 | YES | | |
| C-5 HC2 Franco Reforestation | | Jose Mendoza | 20 | N | | |
| O-9998 WFM Mammoth | | Grant Jensen | 4 | N | O-1 Merry Mix 1 | |
| O-43 FAL1 Scholl Fallers | | James Demastus | 1 | N | | |
| O-44 FAL1 Scholl Fallers | | Pat Richardson | 1 | n | | |
| FAL1 | | Mike Langston | 1 | N | | |
| E-9 ENG6 Solomon Fire | | Tad Lamere | 3 | N | | |
| E-17 WTS2 Archer Mtn | | Dave Clew | 1 | N | | |
| DOZ2 | | Aaron Workman | 2 | N | | |
| DOZ2 J&J | | Jerod Mangum | 2 | N | | |
| E-46 DOZ4 Bear Creek | | Brian Doye | 2 | N | | |
| SOF2 | | Jim Freestone | 1 | N | | |
| 7. Control Operations | | | | | | |
| <p>Task: Establish direct or indirect line connecting to existing roads. Prepare and plumb fire lines.</p> <p>Purpose: Prevent fire spread to the North. If northern progression cannot safely be stopped, maintain the south end and improve with secure anchor point.</p> <p>End State: Fire progression has been limited.</p> | | | | | | |
| 8. Special Instructions | | | | | | |
| <p>Utilize LCES.</p> <p>Logistic orders to DIVS by 1000 for next shift.</p> <p>Consolidate trash for back haul.</p> <p>Disengage from cedar snag areas when winds are 5 mph or greater.</p> | | | | | | |
| 9. Division/Group Communication Summary | | | | | | |
| Function | Frequency - RX | Frequency - TX | Tone | Channel | Comments | |
| | | | | | SEE COMM PLAN | |
| | | | | | | |
| | | | | | | |
| | | | | | | |
| Prepared by (RESL) | | Approved by (PSC2) | | Date | | Time |
| Jody Pettit | | Mike Rubenstein | | 07/11/2021 | | 2000 |

| ASSIGNMENT LIST | | 1. Branch | 2. Division/Group | | | |
|---|--------------------------------|---|---------------------|---------------------------------|-------------------|------------------|
| | | 1 | Scott Fire Group | | | |
| 3. Incident Name Cougar Rock Complex | | 4. Operational Period Date: 07/12/2021 Time: 0600-2200 | | | | |
| 5. Operations Personnel | | | | | | |
| Operations Chief - Line | Joe Brabender, Danny Lemer (t) | | Branch Director | Jerod Russell, Dave Gregory (t) | | |
| Operations Chief - Planning | Ron Naber | | Air Branch Director | Sal Garcia | | |
| 6. Resources Assigned This Period | | | | | | |
| Strike Team/Task Force/ Resource Designator | Last Shift | Leader | No. Pers. | Trans. Needed | Drop Off PT./Time | Pick Up PT./Time |
| O-18 Module IA-IDL-321 | | Adam Canfield | 4 | N | | |
| Module IA-IDL | | Shawver | 8 | N | | |
| ENG4 CT | | Gehrman | 2 | N | | |
| E-8 ENG6 Rocky Mtn Fire | | KC Nutt | 3 | N | | |
| | | | | | | |
| O-19 HEQB | | Matt Hajos | 1 | N | | |
| DOZ2 Hanson | | Stonehocker | 1 | N | | |
| DOZ2 Junior | | | 1 | N | | |
| DOZ2 Kankoutdall | | Kiln | 1 | N | | |
| DOZ3 Hanson | | Jenson | 1 | N | | |
| EXCA L&S | | Bruce | 1 | N | | |
| FEL2 Junior | | | 1 | N | | |
| GRDR Dean | | Darrar | 1 | N | | |
| GRDR Hanson | | Hanson | 1 | N | | |
| LOWB Junior | | | 1 | N | | |
| | | | | | | |
| SOF2 | | Jim Freestone | 1 | N | | |
| 7. Control Operations | | | | | | |
| <p>Task: Scout Scott fire for potential fire suppression and values at risk protection opportunities. Gather accurate intel on personnel and equipment on scene.</p> <p>Purpose: Prioritize fire suppression and values at risk protection efforts with limited resource availability.</p> <p>End State: All fires within the Scott Fire has a viable fire suppression/values at risk protection plan.</p> | | | | | | |
| 8. Special Instructions | | | | | | |
| Utilize LCES. Safely establish containment lines. | | | | | | |
| 9. Division/Group Communication Summary | | | | | | |
| Function | Frequency - RX | Frequency - TX | Tone | Channel | Comments | |
| | | | | | SEE COMM PLAN | |
| | | | | | | |
| | | | | | | |
| | | | | | | |
| Prepared by (RESL) Jody Pettit | | Approved by (PSC2) Mike Rubenstein | | Date 07/11/2021 | | Time 2000 |

| ASSIGNMENT LIST | | 1. Branch | 2. Division/Group | | | |
|---|-----------------------------------|---------------------------------------|-------------------|-------------------|-------------------|------------------|
| | | 2 | | Benton Fire Group | | |
| 3. Incident Name | | 4. Operational Period | | | | |
| Cougar Rock Complex | | Date: 07/12/2021 | | Time: 0600-2200 | | |
| 5. Operations Personnel | | | | | | |
| Operations Chief - Line | Don Hammack, Manny Mendoza (t) | Branch Director | | RJ Hannah | | |
| Operations Chief - Planning | Ron Naber | Air Branch Director | | Sal Garcia | | |
| 6. Resources Assigned This Period | | | | | | |
| Strike Team/Task Force/ Resource Designator | Last Shift | Leader | No. Pers. | Trans. Needed | Drop Off PT./Time | Pick Up PT./Time |
| O-3 TFLD | | Mitch Scates | 1 | N | | |
| O-21 TFLD (T) | | Lem Johnson | 1 | N | | |
| O-9999 FAL1 | | Cody Steinbruecker | 1 | N | O-1 Benton IROC | |
| FFT1 | | Nate Hess | 1 | N | | |
| E-9999 ENG4 Wildfire Resources | | Martin Lorentz | 3 | N | E-1 Hobbit IROC | |
| E-9998 ENG4 Hart | | Eugene Weasel | 3 | N | E-2 Hobbit IROC | |
| E-12 ENG6 Metal Works | | Rhys Anderson | 1 | N | | |
| ENG6 Hells Canyon | | Jerry Wool | 3 | N | | |
| E-15 WTS2 Oxford | | Hauns Wardays | 1 | N | | |
| E-16 WTS2 Oxford | | Charley Clark | 1 | N | | |
| WTS2 Furry Concrete | | Lee Stener | 1 | N | | |
| | | | | | | |
| O-9003 HEQB | | Dan Patterson | 1 | N | O-3 Scott IROC | |
| O-6 HEQB | | Scott Bonk | 1 | N | | |
| O-7 HEQB | | Josh Brandt | 1 | N | | |
| DOZ1 McLaughlin | | | 1 | N | | |
| DOZ Dao | | Howard Winn | 1 | N | | |
| D7 PUMPER CAT Stanton | | Darrel Stanton | 1 | N | | |
| | | | | | | |
| SOF2 | | Jim Freestone | 1 | N | | |
| 7. Control Operations | | | | | | |
| <p>Task: Scout Benton Ridge, North Fork Benton, Benton South, Benton Nob, and Lovell Nob fires for potential fire suppression and values at risk protection opportunities. Gather accurate intel on personnel and equipment on scene.</p> <p>Purpose: Prioritize fire suppression and values at risk protection efforts with limited resource availability.</p> <p>End State: All fires have a viable fire suppression/values at risk protection plan.</p> | | | | | | |
| 8. Special Instructions | | | | | | |
| Utilize LCES. | | | | | | |
| 9. Division/Group Communication Summary | | | | | | |
| Function | Frequency - RX | Frequency - TX | Tone | Channel | Comments | |
| | | | | | SEE COMM PLAN | |
| | | | | | | |
| | | | | | | |
| Prepared by (RESL) Jody Pettit | | Approved by (PSC2) Mike Rubenstein | | Date 0711/2021 | | Time 2000 |

| ASSIGNMENT LIST | | 1. Branch | 2. Division/Group | | | |
|---|-----------------------------------|-----------------------|------------------------|-----------------|-------------------|------------------|
| | | 2 | Butte Creek Fire Group | | | |
| 3. Incident Name | | 4. Operational Period | | | | |
| Cougar Rock Complex | | Date: 07/12/2021 | | Time: 0600-2200 | | |
| 5. Operations Personnel | | | | | | |
| Operations Chief - Line | Don Hammack, Manny Mendoza (t) | Branch Director | Mike West | | | |
| Operations Chief - Planning | Ron Naber | Air Branch Director | Sal Garcia | | | |
| 6. Resources Assigned This Period | | | | | | |
| Strike Team/Task Force/ Resource Designator | Last Shift | Leader | No. Pers. | Trans. Needed | Drop Off PT./Time | Pick Up PT./Time |
| E-18 WTS2 Swanson Logging | | | 1 | N | | |
| EXCA McLaughlin | | | 1 | N | | |
| GRDR Fink Logging | | Anderson | 1 | N | | |
| SOF2 | | Jim Freestone | 1 | N | | |
| 7. Control Operations | | | | | | |
| <p>Task: Scout Butte Creek fire for potential fire suppression and values at risk protection opportunities. Gather accurate intel on personnel and equipment on scene.</p> <p>Purpose: Prioritize fire suppression and values at risk protection efforts with limited resource availability.</p> <p>End State: All fires within the Branch 2 area have a viable fire suppression/values at risk protection plan.</p> | | | | | | |
| 8. Special Instructions | | | | | | |
| Utilize LCES.. | | | | | | |
| 9. Division/Group Communication Summary | | | | | | |
| Function | Frequency - RX | Frequency - TX | Tone | Channel | Comments | |
| | | | | | SEE COMM PLAN | |
| | | | | | | |
| | | | | | | |
| Prepared by (RESL) | | Approved by (PSC2) | | Date | Time | |
| Jody Pettit | | Mike Rubenstein | | 07/11/2021 | 2000 | |

| ASSIGNMENT LIST | | 1. Branch | 2. Division/Group | | | |
|--|--------------------------------|--|---------------------|--------------------|-------------------|------------------|
| | | 2 | | FS Fire Group | | |
| 3. Incident Name Cougar Rock Complex | | 4. Operational Period Date: 07/12/2021 Time: 0600-2200 | | | | |
| 5. Operations Personnel | | | | | | |
| Operations Chief - Line | Don Hammack, Manny Mendoza (t) | | Branch Director | | | |
| Operations Chief - Planning | Ron Naber | | Air Branch Director | Sal Garcia | | |
| 6. Resources Assigned This Period | | | | | | |
| Strike Team/Task Force/ Resource Designator | Last Shift | Leader | No. Pers. | Trans. Needed | Drop Off PT./Time | Pick Up PT./Time |
| Rappelers | | | 8 | N | | |
| E-1 ENG4 Hart Ventures | | Wetzel | 3 | N | | |
| E-2 ENG6 | | Tracy Prock | 3 | N | | |
| E-13 ENG6 Alder Creek | | Alberto Paz | 3 | N | | |
| E-19 WTS2 Richardson Tree Care | | David Betz | 3 | N | | |
| | | | | | | |
| SOF2 | | Jim Freestone | 1 | N | | |
| | | | | | | |
| 7. Control Operations | | | | | | |
| <p>Task: Scout Owl and Washington Creek fires for potential fire suppression and values at risk protection opportunities. Gather accurate intel on personnel and equipment on scene.</p> <p>Purpose: Prioritize fire suppression and values at risk protection efforts with limited resource availability.</p> <p>End State: All fires have a viable fire suppression/values at risk protection plan.</p> | | | | | | |
| 8. Special Instructions | | | | | | |
| Owl fire has first priority. Utilize LCES. | | | | | | |
| 9. Division/Group Communication Summary | | | | | | |
| Function | Frequency - RX | Frequency - TX | Tone | Channel | Comments | |
| | | | | | SEE COMM PLAN | |
| | | | | | | |
| | | | | | | |
| | | | | | | |
| Prepared by (RESL) Jody Pettit | | Approved by (PSC2) Mike Rubenstein | | Date 07/11/2021 | Time 2000 | |

AIR OPERATIONS SUMMARY Prepared By: **Sal Garcia** Prepared Date: **7/11/2021** Prepared Time: **1845**

1. INCIDENT NAME: Cougar Rock Complex
2. OPS PERIOD DATE: 7-12-2021
START TIME: 0600
END TIME: 2200
SUNRISE: 0505
SUNSET: 2037

3. REMARKS: (Safety Notes, Hazards, Air Operations, Special Equipment, etc.):
 Keep alert and be responsive to needs and issues of the changing environment
 Watch - General aviation and be aware of reduced visibilities due to weather and smoke
4. Medical: Medevac/Extraction - Order through communications.
 Refer to Medical plan
5. TFR / NOTAM:
 TFR 1/6747 - Butte Creek
 AA 127.1000 - 166.6125
 TFR 1/6748 - Scott Incident
 AA 125.000 - 166.600


Do to the number of fires within the Complex, please review the Communications Plan in the IAP - do to respective assignments, keep alert and prior to departing and or reassignment confirm frequencies and destination
Aviation map should be Completed in the coming days, with Respective information -
Communications can be used, if needed can relay aviation needs

| 6. PERSONNEL | NAME | PHONE # | 7. FREQUENCIES | AM | FM | 8. FIXED-WING Avail/ Type/ Make-Model/ N#/ Base |
|--------------|------------|--------------|-----------------------|----------------|--------------------|--|
| AOBD | Sal Garcia | 760 310-0318 | A/A TFR & Fixed Wing | | | Air Attack available from Grangeville |
| | | | A/A Rotor Wing - Disp | 132.050 | | |
| | | | AVG - Primary | TX/RX TX/RX | Refer to Comm Plan | Retardant and Lead Plane upon request through Air Attack or Operations |
| | | | | | | At present - orders for Helicopters and staffing has been placed |

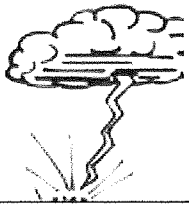
9. HELICOPTERS (Use Additional Sheets as Necessary)

| FAA N# | TY | MAKE/ MODEL | BASE | START | AVAIL | REMARKS | FAA N# | TY | MAKE/ MODEL | BASE | START | AVAIL | Remarks |
|----------------|----|-------------|------|-------|-------|---------|--------|----|-------------|------|-------|-------|---------|
| | | | | | | | | | | | | | |
| No Helicopters | | Assigned | | | | | | | | | | | |
| | | | | | | | | | | | | | |
| | | | | | | | | | | | | | |

Air Operations Branch Director /d/ Date/Time 7/12/2021

| INCIDENT RADIO COMMUNICATIONS PLAN | | Incident Name | | Date/Time Prepared | | Operational Period Date/Time | | | |
|------------------------------------|------------|---|---------------|--------------------|---------|---------------------------------|---------|-------|--------------------------------|
| | | Cougar Rock Complex | | 7/11/2021 1500 | | 7/12/2021 0700 – 9/13/2021 0700 | | | |
| Ch # | Function | Channel Name | Assignment | RX Freq N or W | RX Tone | TX Freq N or W | Tx Tone | Mod e | Remarks |
| 1 | Repeater | Command 1 | All Resources | 167.1000 N | 146.2 | 169.7500 N | 146.2 | A | To Communications |
| 2 | | | | | | | | | |
| 3 | | | | | | | | | |
| 4 | | | | | | | | | |
| 5 | Repeater | CPTPA 2 | I/A | 153.0650 N | 97.4 | 158.1600 N | 97.4 | A | ELK Butte/Grangeville Dispatch |
| 6 | Tactical | TAC 6 | Hobbit | 168.0500 N | 146.2 | 168.0500 N | 146.2 | A | NIFC Tac |
| 7 | Tactical | TAC 7 | Scott | 168.2000 N | 146.2 | 168.2000 N | 146.2 | A | NIFC Tac |
| 8 | Tactical | TAC 8 | Benton | 168.6000 N | 146.2 | 168.6000 N | 146.2 | A | NIFC Tac |
| 9 | Tactical | TAC 9 | Butte Creek | 166.7250 N | 146.2 | 166.7250 N | 146.2 | A | NIFC Tac |
| 10 | Tactical | TAC 10 | FS Fire | 166.7750 N | 146.2 | 166.7750 N | 146.2 | A | NIFC Tac |
| 11 | Tactical | TAC 11 | All Resources | 168.2500 N | 146.2 | 168.2500 N | 146.2 | A | NIFC Tac |
| 12 | Tactical | ID EMS | All Resources | 155.2800 N | | 155.2800 N | 156.7 | A | EMS AMBO/AIR UNITS |
| 13 | Air/Ground | IDL A2GS | All Resources | 151.1450 N | | 151.1450 N | 100.0 | A | Statewide Air/Guard |
| 14 | Air/Ground | Scott A/G | All Resources | 166.6000 N | | 166.6000 N | | A | NIFC A/G |
| 15 | Air/Ground | Butte A/G | All Resources | 166.6125 N | | 166.6125 N | | A | NIFC A/G |
| 16 | Air Guard | Air Guard | All Resources | 168.6250 N | | 168.6250 N | 110.9 | A | Emergency |
| Prepared By: (Communications Unit) | | Thomas Robbins COML  | | Incident Location | | Orofino ID | | | |

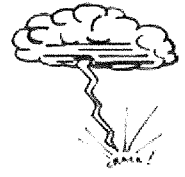
The convention calls for frequency lists to show four digits after the decimal place, followed by either an "N" or a "W", depending on whether the frequency is narrow or wide band. Mode refers to either "A" or "D" indicating analog or digital (e.g. Project 25) or "W" indicating mixed mode. All channels are shown as if programmed in a control station, mobile or portable radio. Repeater and base stations must be programmed with the Rx and Tx reversed.



HEALTH AND SAFETY MESSAGE

SAFETY starts with **YOU**

We are **ALL** accountable for **SAFE** behaviors



INCIDENT:
Couger Rock Complex

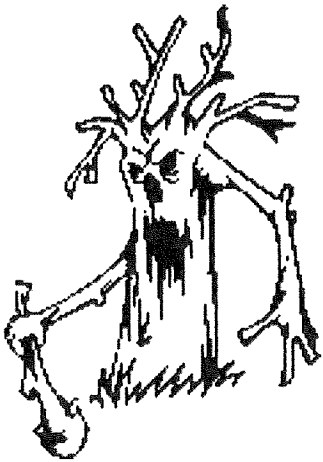
DATE: July 12th, 2021
TIME: Day 0600-2200,

Major Hazards and Risks:

- **Weather Hazards:** The weather will continue to be hot and dry. Watch each other and yourself for signs of a heat related illness. Continue to HYDRATE, HYDRATE and HYDRATE just a little bit more.

Quote for the day: "The longer you wait to make a decision, the fewer options you will have!"
Unknown

SNAGS and Fire Weakened Green Trees



Wind and Snags do not work well with each other. As fronts come and go, winds will increase and snags will react and come done. Keep your eye out for fire weakened snags and green trees. The longer the time fire has passed, the more likely snags/trees will fall.

Your Safety Team!!

Marvin Carpenter, Jim Freestone

Remember Each of **You** are safety Officers!!

Heat-Related Injury

- A heat-related injury is a potentially fatal condition.
- Caused by elevated body temperatures
- From either internal heat produced by activity, or
- External environmental heat

SYMPTOMS

Profuse sweating with warm or cool, clammy skin leading to hot dry skin. Muscle cramps, Dizziness, headache, rapid weak pulse, vomiting, mental status change, loss of consciousness.

TREATMENT

Cool the body as quickly as possible, then Treat other conditions. Remove from external heat source. Reduction of work output. Seek advance medical care.

HOW TO AVOID

Through proper nutrition and hydration. High fitness level and quality rest.

MEDICAL PLAN (ICS 206 WF)

| | |
|---|---|
| 1. Incident/ project name and address: | 2. Operational Period: Date/Time |
| Cougar Rock Complex | 7-12-2021 0700-1900 |



| 3. Ambulance Services | | | |
|-----------------------------|--------------------------------|-----------------------|-------|
| Name | Complete address | Phone & EMS Frequency | ALS ✓ |
| Clearwater County Ambulance | 1195 Riverside Ave, Orofino | 911 208-476-3771 | X |
| Boat transport- Paul Pence | Army Corp Engineers Orofino | 208-715-0071 | |
| | | | |

| 4. Air Ambulance Services | | | | | |
|---------------------------|------------------|-----------------------|-------|---------|---------|
| Name | Location/remarks | Phone & EMS Frequency | ALS ✓ | hoist ✓ | night ✓ |
| Life Flight Network | Lewiston ID | 911 800-232-0911 | X | | |
| Two Bear air | Whitefish , MT | 406-297-2121 | | X | X |

| 5. Hospitals | | | | | | |
|------------------------------------|--------------|-----------------|------------|-------------------------------|----------------------------|--------|
| Name | Phone | Level of care | Heli Pad ✓ | Lat long | Travel time to hosp: min's | |
| | | | | | Air | Ground |
| Clearwater Valley Hospital | 208-476-4555 | Critical access | x | N 46 29.191 W 116 15.576' | | 4 |
| Sacred Heart Medical center | 509-455-3131 | Level 2 trauma | X | N 47 38.947' W 117 24.778' | | 160 |
| St. Joseph Regional Medical Center | 208-743-2511 | Level 2 trauma | | N 46 25.016' W 117 01.449' | | 59 |
| Harborview burn center | 206-744-5735 | Burn center | x | 47.6034° N 122.3236° W | | 365 |

| 6. Area Location Capability | | | | | | | |
|-----------------------------|------------------------------|---------------------|---------------------|------------------------------|--------|-------------------------|---|
| Branch, Div, Group | Aid Station Name; Responders | Equipment available | Emergency frequency | Ambulance ETA to site: min's | | Nearby Helispot &/or DP | Helispot &/or DP lat/long (DD mm.mmm') Datum WGS 84 |
| | | | | Air | Ground | | |
| ICP | MEDL/EMP Teri Miller | ALS | | | 4 | | |
| | MEDL/AEMF Gwen Couture | BLS | | | | | |
| | | | | | | | |

7. Notes, special procedures: Use Medical Incident Report for medical response and Medical Incident Pre-Planning worksheet for briefing. Medical Emergencies should be reported in accordance with Lolo/Kootenai Forest procedures.

| 8. Prepared by (Medical Unit Leader) | 9. Date/Time | 10. Reviewed by (Safety Officer) | 11. Date/Time |
|---|--------------|--|---------------|
|  Teri Miller | 7/11/21 2100 |  Marvin Carpenter | 7/11/21 1700 |

ASSIGNMENT-SPECIFIC MEDICAL EMERGENCY ACTION PLAN

Pre-Planning for today's assignment

| | | |
|---|--|--|
| What are the likely hazards that could cause injuries? What kind of severe injuries? | | |
| Who is the likely in-charge DIVS or overhead for an emergency in your assigned area today? (i.e. "Division Zulu") | | |
| Who are the Medical personnel assigned to your part of the incident? What are their capabilities? | | |
| Other Emergency Responders: fire dept., crash rescue, ambulance? | | |
| Communications: Command channel, Air to Ground, Medical helicopters, local rescue/medical? | | |
| Transportation methods available | Ground vehicle, drop point, coordinates, travel route? | |
| | Aircraft I.D, Helispot names, coordinates? Hoist capable, internal transport | |
| | Other available methods - contingency | |
| Most likely workforce for evacuation | | |

Response checklist

Who takes charge?

- DIVS or designated Overhead manages the overall scene and evacuation process.
- Medical personnel and emergency responders manage patients and assist in rescue/extrication.
- OPS and IC make command decisions so the emergency can be given full attention and management. They continue to manage ongoing incident operations.

Response sequence:

- First, secure the scene and protect responders and patients from further injury. Render first aid.
- Clear the Command channel for "Emergency Traffic only" if this is a critical emergency. If not, inform Communications of non-critical-emergency status and use normal communications.
- Contact closest Medical personnel and DIVS or designated Overhead for response.

Information for Communications: Medical Incident Report – See last page of IAP and IRPG pages 118 and 119.

Helicopter Extraction Operations: See IRPG pages 116 and 117.

Severe Weather: In the event of forecasted severe weather, implement Incident Severe Weather Plan.

Incident Within Incident: Upon arriving at the incident, all overhead should obtain and review the team's Incident Within Incident Plan.

Incident within Incident (IWI) Plan

Immediate response:

- Secure the site to prevent further injury to victims and responders.
- Render first aid using crew and line EMT's and nearby forces.
- Designate a Point of Contact at the scene. Notify communications who this is and when it changes.
- Notify Communications and Medical Unit. Identify whether this is a life threatening emergency or less serious injury.
- Communications requests "Emergency Traffic" to clear channel if it is a life threatening emergency.
- Transmit critical information from the scene to Communications: Type and extent of injury; Airway or breathing problems; serious bleeding; EMT present or needed; ALS needed. Give specific location of victim: Lat/Long; ground or air access; DP#; Helispot or helicopter medevac site. Do not use victim or crew names in any communications. **Use the Medical Incident Report, pages 118 and 119 of the Incident Response Pocket Guide (IRPG) as a checklist.**
- Request appropriate Medical Unit, incident resource and local 9-1-1 EMS response.
- Designate an Incident Within Incident Commander (IWIC). DIVS is normally in charge. Other Operations persons may be in charge until relieved. Notify communications who this is and when it changes.
- Communications: If requested, notify Local 9-1-1 EMS and other responders right away. Provide staging information, medical evacuation location(s), IWIC, medical contact information and communication protocol. Post Medical Incident Report at Communications desk to facilitate sharing critical information.
- Medical Unit Leader should assist the IWIC in coordinating any Local EMS, incident medical, and transportation response.
- Communications notifies DIVS, Line OPS and SOF2 to respond to the scene.
- In the event we are shadowing another team, provide whatever assistance we can to help them with the situation.

Aviation Mishap:

For an aviation accident within the fire area, the standard Incident within Incident protocols will be followed.

For an aviation accident outside of the fire area, the following procedure will be followed in addition to the Incident within an Incident Protocols.:

If an aviation accident is suspected or reported, Helibase will dispatch Air Attack to the location to assess the scene. If no Air Attack is available than the closest aviation resource will be dispatched. Helibase will then make a determination on the most appropriate helicopter available to respond for rescue considering time, capabilities, access, etc. Once on scene the helitack on site will designate a POC to be in charge of the situation until relieved. Once these resources are on scene and communication is established the Incident within an Incident protocols remain the same.

**COUGAR ROCK COMPLEX
ID-CTS-000623
CHECK-IN PROCESS**

A virtual check-in process has been established for all resources checking into the Cougar Rock Complex. **IF YOU HAVE NOT CHECKED INTO THE COUGAR ROCK COMPLEX, PLEASE DO SO AS SOON AS POSSIBLE.** You will need a cell or internet connection to fill out the check-in form.



Scan this QR code or use the following link to access the check-in form:

https://forms.office.com/Pages/ResponsePage.aspx?id=4F2CSwVwPUuaFHhBHyhmaOgTTqHWRNxOia_q3fHR5whUME45MVRTSvdBUlZHMFo2MjBPOVZEUII5SiQIQCNOPWcu

If you have questions or cannot fill out the virtual check-in form for any reason, send an email to 2021.cougarrock.checkin@firenet.gov or call the incident Status Check-In Recorder at 423-341-1243 between the hours of 0600 - 2200.

COUGAR ROCK COMPLEX

ID-CTS-000623

PN N5HF 0117

ALL TIME IS NOW CHARGED TO
COUGAR ROCK COMPLEX
EFFECTIVE @ 2200 FRIDAY JULY 9, 2021

To Submit Your TIME electronically:

1. Scan this QR Code. Attach your *signed* CTR or Shift Ticket to the automatically generated email and Send!



2. If the QR Code doesn't work, please scan or take a picture of your *signed* CTR or Shift Ticket, and email to:

2021.cougarrock.finance@firenet.gov

Please remember to put "TIME" and your name in the Subject line!

FOR CONTRACT EQUIPMENT, if you are unable to submit your time electronically, please ask your supervisor for assistance!

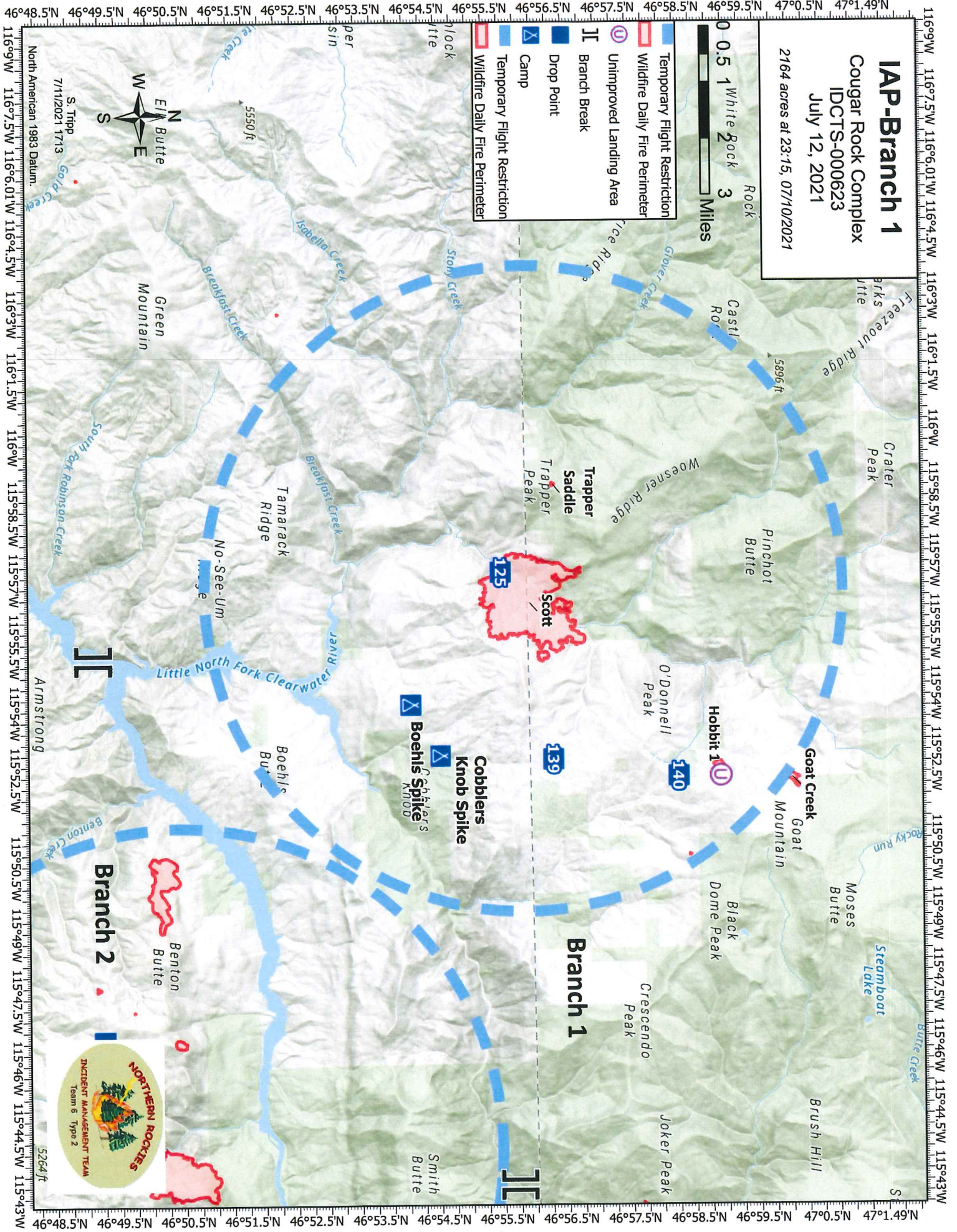
FINANCE QUESTIONS?

Phone (208) 820-4661

IAP-Branch 1

Cougar Rock Complex
 IDCTS-000623
 July 12, 2021
 2164 acres at 23:15, 07/10/2021

- Temporary Flight Restriction
- Wildfire Daily Fire Perimeter
- Unimproved Landing Area
- Branch Break
- Drop Point
- Camp
- Temporary Flight Restriction
- Wildfire Daily Fire Perimeter



46°48.5'N 46°49.5'N 46°50.5'N 46°51.5'N 46°52.5'N 46°53.5'N 46°54.5'N 46°55.5'N 46°56.5'N 46°57.5'N 46°58.5'N 46°59.5'N 47°0.5'N 47°1.49'N

116°9'W 116°7.5'W 116°6.01'W 116°4.5'W 116°3'W 116°1.5'W 116°0'W 115°58.5'W 115°57'W 115°55.5'W 115°54'W 115°52.5'W 115°50.5'W 115°49'W 115°47.5'W 115°46'W 115°44.5'W 115°43'W

IAP-Branch 2

Cougar Rock Complex

IDCTS-000623

July 12, 2021

2164 acres at 23:15, 07/10/2021

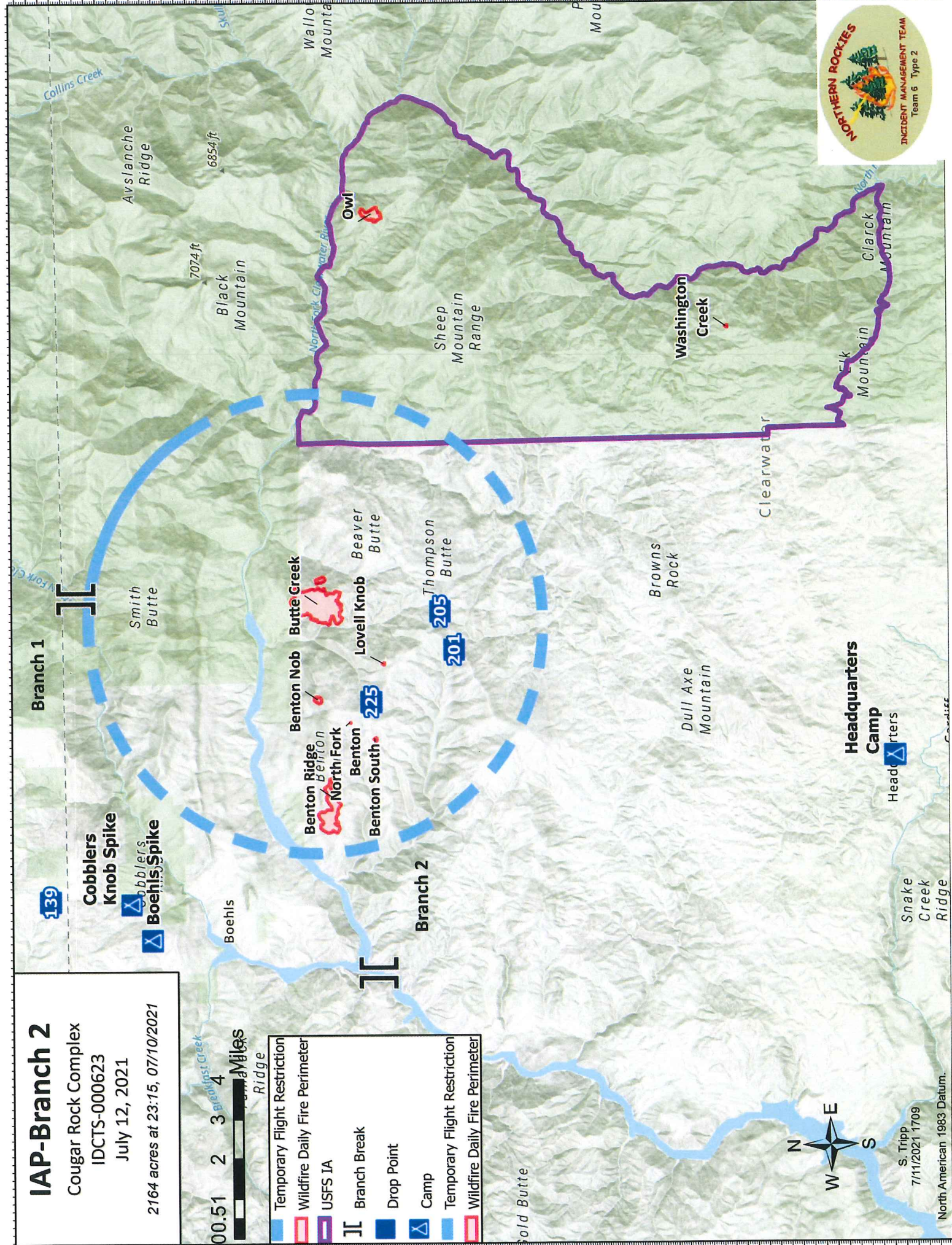


- Temporary Flight Restriction
- Wildfire Daily Fire Perimeter
- USFS IA
- Branch Break
- Drop Point
- Camp
- Temporary Flight Restriction
- Wildfire Daily Fire Perimeter



S. Tripp
7/11/2021 1709

North American 1983 Datum.



MEDICAL PLAN (ICS 206 WF)

Controlled Unclassified Information//Basic

| Medical Incident Report | | | | | |
|---|--|--------------|---|---------------|------------|
| FOR A NON-EMERGENCY INCIDENT, WORK THROUGH CHAIN OF COMMAND TO REPORT AND TRANSPORT INJURED PERSONNEL AS NECESSARY. | | | | | |
| FOR A MEDICAL EMERGENCY: IDENTIFY ON SCENE INCIDENT COMMANDER BY NAME AND POSITION AND ANNOUNCE "MEDICAL EMERGENCY" TO INITIATE RESPONSE FROM IMT COMMUNICATIONS/DISPATCH. | | | | | |
| Use the following items to communicate situation to communications/dispatch. | | | | | |
| 1. CONTACT COMMUNICATIONS / DISPATCH (Verify correct frequency prior to starting report) <i>Ex: "Communications, Div. Alpha. Stand-by for Emergency Traffic."</i> | | | | | |
| 2. INCIDENT STATUS: Provide incident summary (including number of patients) and command structure. <i>Ex: "Communications, I have a Red priority patient, unconscious, struck by a falling tree. Requesting air ambulance to Forest Road 1 at (Lat./Long.) This will be the Trout Meadow Medical, IC is TFLD Jones. EMT Smith is providing medical care."</i> | | | | | |
| Severity of Emergency / Transport Priority | <input type="checkbox"/> RED / PRIORITY 1 Life or limb threatening injury or illness. Evacuation need is IMMEDIATE <i>Ex: Unconscious, difficulty breathing, bleeding severely, 2° – 3° burns more than 4 palm sizes, heat stroke, disoriented.</i> <input type="checkbox"/> YELLOW / PRIORITY 2 Serious Injury or illness. Evacuation may be DELAYED if necessary. <i>Ex: Significant trauma, unable to walk, 2° – 3° burns not more than 1-3 palm sizes.</i> <input type="checkbox"/> GREEN / PRIORITY 3 Minor Injury or illness. Non-Emergency transport <i>Ex: Sprains, strains, minor heat-related illness.</i> | | | | |
| Nature of Injury or Illness & Mechanism of Injury | | | <i>Brief Summary of Injury or Illness (Ex: Unconscious, Struck by Falling Tree)</i> | | |
| Transport Request | | | <i>Air Ambulance / Short Haul/Hoist Ground Ambulance / Other</i> | | |
| Patient Location | | | <i>Descriptive Location & Lat. / Long. (WGS84)</i> | | |
| Incident Name | | | <i>Geographic Name + "Medical" (Ex: Trout Meadow Medical)</i> | | |
| On-Scene Incident Commander | | | <i>Name of on-scene IC of Incident within an Incident (Ex: TFLD Jones)</i> | | |
| Patient Care | | | <i>Name of Care Provider (Ex: EMT Smith)</i> | | |
| 3. INITIAL PATIENT ASSESSMENT: Complete this section for each patient as applicable (start with the most severe patient) | | | | | |
| Patient Assessment: See IRPG page 106 | | | | | |
| Treatment: | | | | | |
| 4. TRANSPORT PLAN: | | | | | |
| Evacuation Location (if different): (Descriptive Location (drop point, intersection, etc.) or Lat. / Long.) Patient's ETA to Evacuation Location: | | | | | |
| Helispot / Extraction Site Size and Hazards: | | | | | |
| 5. ADDITIONAL RESOURCES / EQUIPMENT NEEDS: | | | | | |
| <i>Example: Paramedic/EMT, Crews, Immobilization Devices, AED, Oxygen, Trauma Bag, IV/Fluid(s), Splints, Rope rescue, Wheeled litter, HAZMAT, Extrication</i> | | | | | |
| 6. COMMUNICATIONS: Identify State Air/Ground EMS Frequencies and Hospital Contacts as applicable | | | | | |
| Function | Channel Name/Number | Receive (RX) | Tone/NAC * | Transmit (TX) | Tone/NAC * |
| COMMAND | | | | | |
| AIR-TO-GRND | | | | | |
| TACTICAL | | | | | |
| 7. CONTINGENCY: Considerations: If primary options fail, what actions can be implemented in conjunction with primary evacuation method? Be thinking ahead. | | | | | |
| 8. ADDITIONAL INFORMATION: Updates/Changes, etc. | | | | | |
| REMEMBER: Confirm ETA's of resources ordered. Act according to your level of training. Be Alert. Keep Calm. Think Clearly. Act Decisively. | | | | | |