

# Cougar Rock Complex

ID-CTS-000623  
PNN5HF (1522)



## Incident Action Plan

Thursday  
July 15, 2021  
Operational Period 0600 - 2200

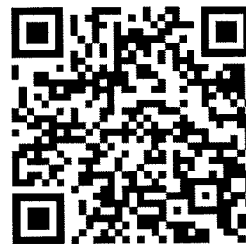
*Virtual Check-In*





*Got Maps? IAP?*



*Got Time?*



*Fire information [2021.cougarrock@firenet.gov](mailto:2021.cougarrock@firenet.gov) or 208-494-1943*

INCIDENT OBJECTIVES	1. Incident Name Cougar Rock Complex	2. Date Prepared 07/15/2021	3. Time Prepared 1900
<p>4. Objectives</p> <p><b><u>High Value Assets and Resources to be Protected:</u></b></p> <ul style="list-style-type: none"> <li>• Private properties, infrastructure and timber resources.</li> <li>• Habitat reparation and watershed, cultural, historic, and heritage sites.</li> <li>• Waterways and riparian areas.</li> </ul> <p><b><u>Leader's Intent:</u></b></p> <ul style="list-style-type: none"> <li>• Protect human life. Firefighter and public safety will be given the highest priority at all times. Risks to firefighters and the public will be managed by utilizing a risked-based approach to decision making. An emphasis will be placed on exposure to accidents and heat related illness.</li> <li>• Minimize the exposure of the public and responders to transmission or infection from COVID-19 by following agency guidance and established CDC, local, state and national guidance to ensure a healthy work environment.</li> <li>• Communicate proactively with agency staffs, cooperators, permittees and stakeholders, including PotlachDeltic, Idaho Department of Lands, United States Army Corps of Engineers, United States Forest Service, the Nez Perce Tribe, and the Clearwater County Sheriff, Emergency Management Coordinator and County Commisioners, through effective and timely dialogues, meetings and comprehensive information sharing for purposes to include public safety, evacuations, traffic control, road closures, structure protection and any other safety risk to public and industrial operators.</li> <li>• Inform the Agency Administrator and Association Line Officer of any public meetings and media contacts and coordinate with the Clearwater IDL and CPTPA to ensure that we build on existing relationships, contacts and key messages.</li> <li>• Utilize appropriate fire strategies to minimize fire impacts to residences, commercial properties, critical community infrastructure and natural resources, and critical watersheds.</li> <li>• Implement appropriate measures to limit the spread of noxious weeds, including washing all vehicles and equipment upon arrival at the incident and departure from the incident.</li> <li>• Work with agency staff and cooperators to assess wildfire effects to infrastructure and watersheds and develop and implement short-term actions to address high-risk watershed impacts.</li> <li>• Commit incident resources only where there is a high probability of meeting reasonable objectives or when the risk of injury or death can be mitigated.</li> <li>• Follow and adhere to the 10 standard orders. Continually evaluate the 18 watch out situations through clear concise direction and understanding of assignments and necessary mitigations.</li> <li>• Maintain and foster relationships with users of public lands, landowners, agencies and local communities.</li> <li>• Maintain the highest degree of professionalism on the incident and within local communities.</li> <li>• Adhere to applicable work-rest guidelines to reduce fatigue and ensure that assigned fire-fighting personnel receive adequate rest.</li> <li>• Maintain a workplace and atmosphere of mutual respect and free of any harassment. There will be no tolerance for any unethical, illegal drug or alcohol related incidents.</li> <li>• Effectively manage costs commensurate with the high value assets and resources to be protected and risks.</li> <li>• Efficiently demobilize resources in a manner that will ensure safe travel and "right-sizing" consistent with demobilization glidepath direction.</li> </ul> <p><b><u>Operational Objectives:</u></b></p> <ul style="list-style-type: none"> <li>• Scout for and prioritize potential fire suppression and values at risk protection opportunities.</li> <li>• Gather intelligence on personnel and equipment on the incident.</li> <li>• Engage in fire suppression and/or values at risk protection actions and/or point protection when safe to do so with available resources.</li> <li>• Respond as appropriate to, and commensurate with the prioritization of, new/emerging incidents.</li> <li>• Act with appropriate prioritization if presented with the opportunity to rehabilitate resource damage caused by suppression actions.</li> </ul>			
<p>5. Prepared By (Planning Section Chief) Mike Rubenstein: </p>		<p>6. Approved By (Incident Commander) </p>	

ORGANIZATION ASSIGNMENT LIST		9. Operations Section	
1. Incident Name	Cougar Rock Complex	Branch 1 Chief-Line	Joe Brabender, Danny Lemer (t)
2. Date	7/14/2021 3. Time 2000	Branch 2 Chief-Line	Don Hammack, Manny Mendoza (t)
4. Operational Period	7/15/2021 0600-2200	Chief-Planning	Ron Naber
<b>5. Incident Commander and Staff</b>		<b>a. Branch I - Division/Groups</b>	
Incident Commander	Jay Winfield, Paul Roose (t), Rich Cowger (t)	Branch Director	Joe Brabender, Danny Lemer (t)
Deputy	Bob Fry	Deputy	
Safety Officer	Marvin Carpenter, Jim Freestone, Opie Blackwell	Division/Group	Hobbit Fire Group Ben Wagner, Paul Wagner
Information Officer	Jill Cobb, Nick Cronquist, Joe Holzinger (t)	Division/Group	Scott Fire Group Jerod Russell, Dave Gregory (t)
Liaison Officer	Chris Grove	Division/Group	
<b>6. Agency Representative</b>		Division/Group	
Agency	Name	Division/Group	
CPTPA	Kane Steinbrueker	<b>b. Branch II - Division/Groups</b>	
PotlatchDeltic	Rich McMillan	Branch Director	Don Hammack, Manny Mendoza (t)
IDL - St. Joe	Rick Areano	Deputy	
Clearwater Co. Sheriff	Chris Goetz	Division/Group	Benton Fire Group RJ Hannah, Joe Raspotnik (t)
Army Corps. of Engineers	Paul Pencil	Division/Group	Butte Fire Group Mike West
USFS - NPF	Rob Gump	Division/Group	FS Fire Group
Nez Perce Tribe Liaison	Christy Bradbury	Division/Group	
		Division/Group	
		<b>c. Branch III - Division/Groups</b>	
		Branch Director	
		Deputy	
<b>7. Planning Section</b>		Division/Group	
Chief	Will Bernard, Mike Rubenstein	Division/Group	
Resource Unit	Jody Pettit	Division/Group	
Demobilization Unit	John Noneman (t)	Division/Group	
Check-In	Cynithia Wharton	Division/Group	
Documentation Unit	Jan Fleming	<b>d. Air Operations Branch</b>	
Situation Unit	Roger Jackson	Air Ops Branch Director	Sal Garcia
GISS Mapping	Andrew Mock, Brandt Hines, Sam Tripp (t)	Air Attack Supervisor	
Fire Behavior	Eric Trimble, Nate Lancaster	Air Attack Supervisor	
IT Support	Ed Yeager, Bryce Nordgren, Dominic Rogers (t)	Helicopter Coordinator	
		Air Tanker Coordinator	
		<b>10. Finance Section</b>	
		Chief	Bertalee Mottern
		Time Unit	Annette Hoyer
<b>8. Logistics Section</b>		Equipment Unit	Lisa Hawdon
Chief	Tyler Rae, Jeremy Walla	Personal Time	Mary Dykstra, Nolan Baldwin (t)
Facilities Unit	AJ Angelo	Cost Unit	Lisa Dickinson (t)
Supply Unit	Bryan Connelley	Comp Claims	Suzanne Vernon (t)
Ordering Unit	Tyre Holfeltz		
Ground Support Unit	AJ Angelo	Prepared by Jody Pettit (Resource Unit Leader)	
Comm Unit	Thomas Robbins, Julie Sendra (t)	Mike Rubenstein PSC2	
Medical Unit	Teri Miller, Gwen Couture		
Security Unit	Sean Nelb		
Food Unit	Mike Oxborrow		

## Fire Weather Forecast

FORECAST NO: 6  
PREDICTION FOR: Day SHIFT  
SHIFT DATE: Thursday, 07-15-2021

NAME OF FIRE: Cougar Rock Complex  
UNIT: CPTPA  
SIGNED: Eric Trimble/Nathan Lancaster, FBAN

TIME AND DATE  
FORECAST ISSUED: 1900 7/14/2021

---

**WEATHER DISCUSSION:** For Cougar Rock Complex (Scott, Trapper Saddle, Hobbit2, Goat Creek)

West or southwest winds will return tomorrow (Thursday) with the gust potential of 15 to 20 mph as cooler air arrives with a cold front. Temperatures will trend down about 8 degrees tomorrow and another 4 degrees for Friday. Relative humidity should trend up a bit on Thursday and continue to moisten Friday into Saturday with afternoon RH in the low to mid 30s.

**Today Thursday, July 15:**

**WEATHER:** Smoky/hazy skies. A few clouds

**TEMPERATURES:** Fire: 80°F

**HUMIDITY:** Fire: 26%

**WINDS (20ft):** Becoming southwest winds 3 to 6 mph by 0900 pdt increasing to southwest 6 to 10 mph with gusts to 17 mph between 1400 and 1800 pdt.

**HAINES INDEX:** 4 Low      **LAL:** 1      **CWR:** 0%

---

**WEATHER DISCUSSION:** For Cougar Rock Complex (Butte Creek, Benton Ridge Fires, Lovell Knob, Sheep, Owl)

Hot, dry, and breezy on Thursday due to a weak cold front passing through the region. Expect winds to shift from southwest to northwest after noon. On Friday, continued warm and dry as winds weaken and become terrain driven.

**Today Thursday, July 15:**

**WEATHER:** Sunny

**TEMPERATURES:** Fire: 85-90

**HUMIDITY:** Fire: 20-25%

**WINDS (20ft):** Southwest 5-7 mph becoming northwest 6-9 mph in the afternoon.

**HAINES INDEX:** 4 Low      **LAL:** 1      **CWR:** 0%

---

**EXTENDED FORECAST: Friday - Tuesday**

Friday... Sunny, with a high near 79. Calm wind becoming west southwest around 5 mph in the afternoon.

Saturday.... Sunny, with a high near 81.

Sunday..... Sunny, with a high near 87.

Monday.... Mostly sunny, with a high near 86.

Tuesday.... Mostly sunny, with a high near 81.

---

## FIRE BEHAVIOR FORECAST

<b>FORECAST NUMBER:</b> 06	<b>INCIDENT TYPE:</b> Wildfire
<b>FIRE NAME:</b> Cougar Rock Complex	<b>OPERATIONAL PERIOD:</b> July 15, 2021 Thursday
<b>DATE ISSUED:</b> July 14, 2021	<b>TIME ISSUED:</b> 1800
<b>UNIT:</b> ID-CPTPA	<b>PREPARED BY:</b> Eric Trimble/Nate Lancaster – FBAN

### INPUTS

#### **WEATHER SUMMARY:**

**Sky Weather:** Smoky/hazy skies. A few clouds, **CWR (>0.10"):** 0%, **Temps:** 80-83°, **RH:** 21-26%, **Haines:** 3 Low, **LAL:** 1  
**Winds (20 ft):** SW 3 to 6 mph. becoming SW 6 to 10 mph gust to 16 mph in the afternoon.

#### **FUELS: Cougar Rock Complex- 14 fires**

Mixed conifer forest dominated by Western Red Cedar, Douglas Fir, Western Larch, and Grand Fir. Subalpine Alpine Fir, Engelmann Spruce and Lodge Pole Pine at the higher elevations (>4,800'). All age and size classes of conifer fuels with relatively high crown bulk density and low crown base heights. Light to moderate amounts of dead fine fuels and logging/thinning slash will contribute to surface fire spread. Herbaceous and live woody fuels are green and will generally not contribute to fire spread.

**Fine Fuels:** 4-5%; 10-hr: 7%; 100hr: 9%; 1000hr: 13%

**ERC:** 90<sup>th</sup> to 97<sup>th</sup> percentile.                      **Max spotting distance:** 0.2 Mile

### OUTPUTS - FIRE BEHAVIOR

#### **General:**

Terrain and fuel-driven fire. Expect active surface fire activity within surface and ground fuels with single to group-tree torching and short-range spotting. Highest activity to occur within Subalpine Fir/Engelmann Spruce stands at the higher peaks and on the steeper sites (>60% slope) with 70-80% consumption of the 1-hr, 10-hr and 100-hr fuels. Smoke from other fires and under inversion may temper fire activity. Live fuels and young conifer plantations should discourage crown fire activity, until fuels dry in the upcoming weeks.

Backing/flanking spread 1-2 ft/min with flames 2-4 ft. Head fire with possible 5-8 ft. flame lengths and 12-16 ft/min rates of spread on the steeper sites, higher with torching and when slope and wind align. Spotting will increase as the inversion breaks and as receptive fuels continue to warm and dry.

#### **Specific:**

**Benton Fires:** Continued movement to the NW toward the Reservoir.

**Butte Creek:** Continued fire growth towards the SE as up valley, up canyon winds push the fire to the east.

**Goat Creek:** Sub alpine Fir will continue to promote fire spread thru multiple tree and group torching.

**Scott Road:** Continued Fire spread in the Floodwood drainage, N on FS ground towards hemlock creek Rd.

**Hobbit:** A free roaming fire will want to spread uphill to the East, towards Goat Mountain.

**Probability of Ignition (PIG):** 70-80% during the peak of the burning period.

**AIR OPERATIONS:** Widespread smoke during the day.

**SAFETY:** "Safety is something that happens between your ears, not something you hold in your hands."

"You can see his charisma from space."  
The Most Interesting Man in the World

ASSIGNMENT LIST		1. Branch	2. Division/Group			
		1	Hobbit Fire Group			
3. Incident Name		4. Operational Period				
Cougar Rock Complex		Date: 07/15/2021		Time: 0600-2200		
5. Operations Personnel						
Operations Chief – Line/ Branch Director		Joe Brabender, Danny Lemer (t)		Group Supervisor Ben Wagner, Paul Wagner (t)		
Operations Chief - Planning		Ron Naber		Air Branch Director Sal Garcia		
6. Resources Assigned This Period						
Strike Team/Task Force/ Resource Designator	Last Shift	Leader	No. Pers.	Trans. Needed	Drop Off PT./Time	Pick Up PT./Time
C-9999 Redding Jumpers	7/23	Mitch Goodman	8	Y		
C-5 HC2 Franco Reforestation	7/25	Jose Mendoza	20	N		
O-9998 WFM Mammoth	7/23	Grant Jensen	8	N	O-1 Merry Mix 1	
O-43 FAL1 Scholl Fallers	7/24	James Demastus	1	N		
O-44 FAL1 Scholl Fallers	7/24	Pat Richardson	1	N		
O-9994 FAL1	7/24	Mike Langston	1	N	O-1 Hobbit	
E-9 ENG6 Solomon Fire	7/20	Tad Namere	3	N		
E-17 WTS2 Archer Mtn	7/24	Dave Clew	1	N		
E-18 WTS2 Swanson Logging	7/23	Derrick Winslow	1	N		
E-9002 DOZ2 J&J	7/23	Jerod Mangum	2	N		
E-9997 DOZ2 CPTPA Cat D6		Jerimy Chase	1	N	E-3 Hobbit	
E-46 DOZ4 Bear Creek	7/23	Brian Doye	2	N		
O-35 PARF	7/27	Adam Osiadacz	1	N		
O-46 EMTF IDAHO BMP	7/27	Cody Brandt	1	N		
E-13 AMBU Best Practices 1	7/27	B Quinland, R Barron	2	N		
O-15 SOF2	7/25	Opie Blackwell	1	N		
7. Control Operations						
Group includes Hobbit, Goat Creek, Trapper Saddle and West Cedar fires.						
Task: Mop up fire two-chains in from fire perimeters.						
Purpose: Secure fires so additional resources can be assigned suppression responsibilities on the Goat Fire.						
End State: Progression of fires has been halted.						
8. Special Instructions						
Utilize LCES.						
Logistic orders to Group Supervisor by 1000 for next shift.						
Consolidate trash for back haul.						
Disengage from cedar snag areas when winds are 5 mph or greater.						
Grandad Bridge and Captains Cabin road closures will be staffed by Clearwater Co. S.O. Deputies from 0600-1800 and 1800-0600.						
9. Division/Group Communication Summary						
Function	Frequency - RX	Frequency - TX	Tone	Channel	Comments	
COMMAND 1	169.7550	167.1000	146.2	1		
CPTPA 2	153.0650	158.1600	97.4	5		
TAC 6	168.0500	168.0500	146.2	6		
SCOTT A/G	166.6000	166.6000		14		
Prepared by (RESL)		Approved by (PSC2)		Date		Time
Jody Pettit		Mike Rubenstein		07/14/2021		2000

ASSIGNMENT LIST		1. Branch	2. Division/Group			
		1	Scott Fire Group – Page 1			
3. Incident Name		4. Operational Period		Time: 0600-2200		
Cougar Rock Complex		Date: 07/15/2021				
5. Operations Personnel						
Operations Chief – Line/ Branch Director		Joe Brabender, Danny Lemer (t)		Group Supervisor		Jerod Russell, Dave Gregory (t)
Operations Chief - Planning		Ron Naber		Air Branch Director		Sal Garcia
6. Resources Assigned This Period						
Strike Team/Task Force/ Resource Designator	Last Shift	Leader	No. Pers.	Trans. Needed	Drop Off PT./Time	Pick Up PT./Time
O-18 Module IA-IDL-321		Adam Canfield	4	N		
C-9001 Module SJS Timber		Jeremy Shawver	6	N		
E-9003 ENG4 CT		Gehrman	2	N		
E-8 ENG6 Rocky Mtn Fire	7/20	KC Nutt	3	N		
E-11 ENG6 Cahoon	7/25	Randy Muttsen	3	N		
O-19 HEQB		Matt Hajos	1	N		
E-9001 DOZ2		Aaron Workman	2	N		
E-9004 DOZ2 Hanson Logging		Stonehocker	1	N		
E-9005 DOZ2 Ray Day Logging		Junior	1	N		
E-9006 DOZ2 Kankoutdall		Kiln	1	N		
E-9007 DOZ3 Hanson Logging		Jenson	1	N		
E-9008 EXCA L&S		Bruce	1	N		
E-9009 FEL1 Ray Day Logging		Junior	1	N		
E-9021 EXCA	7/25	Doug Johnson	1	N		
E-9010 GRDR Dean		Darrar	1	N		
E-9011 GRDR Hanson Logging		Hanson	1	N		
E-9012 LOWB Ray Day Logging		Junior	1	N		
O-35 PARF	7/27	Adam Osiadacz	1	N		
O-46 EMTF IDAHO 02	7/27	Cody Brandt	1	N		
E-13 AMBU Best Practices 1	7/27	B Quinland, R Barron	2	N		
O-15 SOF2	7/25	Opie Blackwell	1	N		
7. Control Operations						
<b>Task:</b> Continue to prep road for burnout operations. Look for opportunities for dozer lines closer to the proximity of the fire. <b>Purpose:</b> Reduce the loss of high value timber. <b>End State:</b> The Scott Fire has a viable fire suppression/values at risk protection plan.						
8. Special Instructions						
Utilize LCES. Safely establish containment lines. Grandad Bridge and Captains Cabin road closures will be staffed by Clearwater Co. S.O. Deputies from 0600-1800 and 1800-0600.						
9. Division/Group Communication Summary						
Function	Frequency - RX	Frequency - TX	Tone	Channel	Comments	
COMMAND 1	169.7550	167.1000	146.2	1		
CPTPA 2	153.0650	158.1600	97.4	5		
TAC 7	168.2000	168.2000	146.2	7		
SCOTT A/G	166.6000	166.6000		14		
Prepared by (RESL)		Approved by (PSC2)		Date		Time
Jody Pettit		Mike Rubenstein		07/14/2021		2000





ASSIGNMENT LIST		1. Branch	2. Division/Group			
		2	Benton Fire Group			
3. Incident Name	Cougar Rock Complex	4. Operational Period	Date: 07/15/2021	Time: 0600-2200		
5. Operations Personnel						
Operations Chief – Line/ Branch Director	Don Hammack, Manny Mendoza (t)	Group Supervisor	RJ Hannah, Joe Raspotnik (t)			
Operations Chief - Planning	Ron Naber	Air Branch Director	Sal Garcia			
6. Resources Assigned This Period						
Strike Team/Task Force/ Resource Designator	Last Shift	Leader	No. Pers.	Trans. Needed	Drop Off PT./Time	Pick Up PT./Time
O-3 TFLD	7/24	Mitch Scates	1	N		
O-21 TFLD (T)	7/24	Lem Johnson	1	N		
C-7 HC2 Franco	7/27	Rafael Alcantar-Cisneros	20	N		
O-9005 FFT1		Nate Hess	1	N		
O-9999 FAL1		Cody Steinbruecker	1	N	O-1 Benton IROC	
E-9998 ENG4 Hart	7/24	Eugene Weasel	3	N	E-2 Hobbit IROC	
E-12 ENG6 Metal Works	7/24	Rhys Anderson	3	N		
E-9013 ENG6 Hells Canyon		Jerry Wool	3	N		
E-14 WTS2 Fox Creek		Maureen West	1	N		
E-15 WTS2 Oxford	7/24	Hauns Wardays	1	N		
E-16 WTS2 Oxford	7/24	Charley Clark	1	N		
E-9014 WTS2 Furry Concrete		Lee Stener	1	N		
O-6 HEQB		Scott Bonk	1	N		
O-7 HEQB		Josh Brandt	1	N		
O-9003 HEQB		Dan Patterson	1	N	O-3 Scott IROC	
E-9015 DOZ1 McLaughlin		Austin Waters	1	N		
E-9016 DOZ Dao		Howard Winn	1	N		
E-9017 D7 PUMPER CAT Stanton		Darrel Stanton	1	N		
E-9039 EXCA Deyo		Trevor Deyo	1	N		
E-9022 FEL1 Stanton			1	N		
E-9020 SKID Stanton			1	N		
O-36 EMTF Idaho 06	7/27	Yoaila Kopelowitz	1	N		
O-44 EMTF Idaho 07	7/27	Misty Bauer	1	N		
O-1.38 MEDL	7/25	Gwen Coulture	1	N		
O-35 PARF	7/27	Adam Osiadacz	1	N		
E-14 AMBU Best Practices 2	7/27	Frank Batten, Shyre Isham	2	N		
O-1.8 SOF2	7/23	Jim Freestone	1	N		
7. Control Operations						
Group includes the Benton Face, Benton Ridge, North Fork Benton, Benton South, Benton Nob and Lovell Knob fires.						
Task: Scout fires for potential suppression and values at risk protection opportunities. Gather intel on personnel equipment on scene.						
Purpose: Prioritize fire suppression and values at risk. Prioritize protection efforts with limited resource availability.						
End State: All fires have a viable fire suppression/values at risk protection plan.						
8. Special Instructions						
Utilize LCES. Granddad Bridge and Captains Cabin road closures staffed by Clearwater Co. S.O. Deputies from 0600-1800 and 1800-0600.						
9. Division/Group Communication Summary						
Function	Frequency - RX	Frequency - TX	Tone	Channel	Comments	
COMMAND 1	169.7550	167.1000	146.2	1		
CPTPA 2	153.0650	158.1600	97.4	5		
TAC 8	168.6000	168.6000	146.2	8		
BUTTE A/G	166.6125	166.6125		15		
Prepared by (RESL) Jody Pettit	Approved by (PSC2) Mike Rubenstein		Date 07/14/2021	Time 2000		

ASSIGNMENT LIST		1. Branch	2. Division/Group			
		2			Butte Creek Fire Group	
3. Incident Name		4. Operational Period				
Cougar Rock Complex		Date: 07/15/2021		Time: 0600-2200		
5. Operations Personnel						
Operations Chief – Line/ Branch Director	Don Hammack, Manny Mendoza (t)		Group Supervisor	Mike West		
Operations Chief - Planning	Ron Naber		Air Branch Director	Sal Garcia		
6. Resources Assigned This Period						
Strike Team/Task Force/ Resource Designator	Last Shift	Leader	No. Pers.	Trans. Needed	Drop Off PT./Time	Pick Up PT./Time
E-9043 DOZ Finky Logging			1	N		
E-9042 EXCA Teathered		Monte Walker	1	N		
E-9018 EXCA McLaughlin		Bruce McLaughlin	1	N		
E-9040 FEB1		Zack Allen	1	N		
E-9041 FEB1		Galen Kikendal	1	N		
E-9019 GRDR Fink Logging		Dillon Anderson	1	N		
O-36 EMTF Idaho 06	7/27	Yoaila Kopelowitz	1	N		
O-44 EMTF Idaho 07	7/27	Misty Bauer	1	N		
O-1.38 MEDL	7/25	Gwen Coulture	1	N		
O-35 PARF	7/27	Adam Osiadacz	1	N		
E-14 AMBU Best Practices 2	7/27	Frank Batten, Shyre Isham	2	N		
O-1.8 SOF2	7/23	Jim Freestone	1	N		
7. Control Operations						
<p><b>Task:</b> Build machine line from Kaufman Saddle to Thompson Creek. Build machine line from Kaufman Saddle to Thompson Point. Scout line from Bottle Creek to Kaufman Saddle. Open Butte Creek Road from Hansen Saddle to reservoir.</p> <p><b>Purpose:</b> To keep fire between Butte and Thompson Creeks, and North of Kaufman Saddle.</p> <p><b>End State:</b> Limit fire growth and protect timber value.</p>						
8. Special Instructions						
<p>Utilize LCES.</p> <p>Grandad Bridge and Captains Cabin road closures will be staffed by Clearwater Co. S.O. Deputies from 0600-1800 and 1800-0600. Watch out for logging traffic from Kaufman Saddle to highway11.</p>						
9. Division/Group Communication Summary						
Function	Frequency - RX	Frequency - TX	Tone	Channel	Comments	
COMMAND 1	169.7550	167.1000	146.2	1		
CPTPA 2	153.0650	158.1600	97.4	5		
TAC 9	166.7250	166.7250	146.2	9		
BUTTE A/G	166.6125	166.6125		15		
Prepared by (RESL) Jody Pettit		Approved by (PSC2) Mike Rubenstein		Date 07/14/2021		Time 2000

ASSIGNMENT LIST		1. Branch	2. Division/Group			
		2		FS Fire Group		
3. Incident Name		4. Operational Period				
Cougar Rock Complex		Date: 07/14/2021		Time: 0600-2200		
5. Operations Personnel						
Operations Chief – Line/ Branch Director	Don Hammack, Manny Mendoza (t)		Group Supervisor			
Operations Chief - Planning	Ron Naber		Air Branch Director	Sal Garcia		
6. Resources Assigned This Period						
Strike Team/Task Force/ Resource Designator	Last Shift	Leader	No. Pers.	Trans. Needed	Drop Off PT./Time	Pick Up PT./Time
C-9007 Rappelers	7/18		8	N		
C-6 HC2 Franco Reforestation		Noe Franco-Guzman	20	N		
E-1 ENG4 Hart Ventures		Wetzel	3	N		
E-9023 ENG6		Tracy Prock	3	N		
E-13 ENG6 Alder Creek	7/24	Alberto Paz	3	N		
E-19 WTS2 Richardson Tree Care	7/24	David Betz	1	N		
E-2022 DOZ3			1	N		
7. Control Operations						
<p><b>Group includes the Owl and Washington Creek fires.</b></p> <p><b>Task:</b> Scout the fires for potential fire suppression and values at risk protection opportunities. Gather accurate intel on personnel and equipment on scene.</p> <p><b>Purpose:</b> Prioritize fire suppression and values at risk. Prioritize protection efforts with limited resource availability.</p> <p><b>End State:</b> All fires have a viable fire suppression/values at risk protection plan.</p>						
8. Special Instructions						
<p>Owl fire is priority. Utilize LCES. Grandad Bridge and Captains Cabin road closures will be staffed by Clearwater Co. S.O. Deputies from 0600-1800 and 1800-0600.</p>						
9. Division/Group Communication Summary						
Function	Frequency - RX	Frequency - TX	Tone	Channel	Comments	
COMMAND 3	171.9250	165.9875	146.2	3		
CPTPA 2	153.0650	158.1600	97.4	5		
TAC 10	166.7750	166.7750	146.2	10		
BUTTE A/G	166.6125	166.6125		15		
Prepared by (RESL) Jody Pettit		Approved by (PSC2) Mike Rubenstein		Date 07/13/2021		Time 2000

**AIR OPERATIONS SUMMARY** Prepared By: Sal Garcia Prepared Date: 7/14/2021 Prepared Time: 2034

**1. INCIDENT NAME:** Cougar Rock Complex **2. OPS PERIOD DATE:** 7-15-2021 **START TIME:** 0600 **END TIME:** 2200 **SUNRISE:** 0505 **SUNSET:** 2036

**3. REMARKS:** (Safety Notes, Hazards, Air Operations, Special Equipment, etc.):  
 Keep alert and be responsive to needs and issues of the changing environment  
 Watch - General aviation and be aware of reduced visibilities due to weather and smoke  
**4. Medical:** Medevac/Extraction - Order through communications. Refer to Medical plan  
**5. TFR / NOTAM:**  
 TFR 1/9720 - Butte Creek  
 AA 127.1000  
 TFR 1/9721 - Scott Incident  
 AA 125.000  
 TFR 1/9722 - Owl  
 AAA 124.0000 -

Do to the number of fires within the Complex, please review the Communications Plan in the IAP - do to respective assignments, keep alert and prior to departing and or reassignment confirm frequencies and destination  
 Aviation map should be Completed in the coming days, with Respective information -  
 Communications can be used, if needed can relay aviation needs  
 Refer to IAP Communications Plan

6. PERSONNEL	NAME	PHONE #	7. FREQUENCIES	AM	FM	8. FIXED-WING Avail/ Type/ Make-Model/ N#/ Base
AOBD	Sal Garcia	760 310-0318	AAA TFR & Fixed Wing A/A Rotor Wing - Disp A/G - Primary	132.050 TX/RX TX/RX	Refer to Comm Plan	Air Attack available from Grangeville  Retardant and Lead Plane upon request through Air Attack or Operations via AOBD
Order Helicopter(s)	And Fix wing, through	Air Ops/AOBD				At present - orders for Helicopters and staffing has been placed
Currently holding 2	Type III helicopter from	CPTPA				Exclusive type III, arrival 7.15.2021 APPROX. 1500 - N27HX
68H & 74H can be	Used on CPTPA lands	Not on FS / Fed				

**9. HELICOPTERS** (Use Additional Sheets as Necessary)

FAA N#	TY	MAKE/ MODEL	BASE	START	AVAIL	REMARKS	FAA N#	TY	MAKE/ MODEL	BASE	START	AVAIL	Remarks
No Helicopters		Assigned											
N27HX						Pending arrival							

**Air Operations Branch Director** /s/ Date/Time 7/14/2021

INCIDENT RADIO COMMUNICATIONS PLAN			Incident Name Cougar Rock Complex		Date/Time Prepared 7/14/2021 1930		Operational Period Date/Time 7/15/2021 0700 – 9/16/2021 0700		
Ch #	Function	Channel Name	Assignment	RX Freq N or W	RX Tone	TX Freq N or W	Tx Tone	Mod e	Remarks
1	Repeater	Command 1	All Resources	169.7500 N		167.1000 N	146.2	A	To Communications
2	Repeater	Command 2	All Resources	173.9625 N		164.8625 N	146.2	A	To Communications
3	Repeater	Command 3	All Resources	171.9250 N		165.9875 N	146.2	A	To Communications
4									
5	Repeater	CPTPA 2	I/A	153.0650 N	97.4	158.1600 N	97.4	A	ELK Butte/Grangeville Dispatch
6	Tactical	TAC 6	Hobbit	168.0500 N	146.2	168.0500 N	146.2	A	NIFC Tac
7	Tactical	TAC 7	Scott	168.2000 N	146.2	168.2000 N	146.2	A	NIFC Tac
8	Tactical	TAC 8	Benton	168.6000 N	146.2	168.6000 N	146.2	A	NIFC Tac
9	Tactical	TAC 9	Butte Creek	166.7250 N	146.2	166.7250 N	146.2	A	NIFC Tac
10	Tactical	TAC 10	FS Fire	166.7750 N	146.2	166.7750 N	146.2	A	NIFC Tac
11	Tactical	TAC 11	All Resources	168.2500 N	146.2	168.2500 N	146.2	A	NIFC Tac
12	Tactical	ID EMS	All Resources	155.2800 N		155.2800 N	156.7	A	EMS AMBO/AIR UNITS
13	Air/Ground	IDL A2GS	All Resources	151.1450 N		151.1450 N	100.0	A	Statewide Air/Guard
14	Air/Ground	Scott A/G	All Resources	166.6000 N		166.6000 N		A	NIFC A/G
15	Air/Ground	Butte A/G	All Resources	166.6125 N		166.6125 N		A	NIFC A/G
16	Air Guard	Air Guard	All Resources	168.6250 N		168.6250 N	110.9	A	Emergency
Prepared By: (Communications Unit) <i>Thomas Robbins</i>				Incident Location			Orofino ID		
Thomas Robbins COM1									

The convention calls for frequency lists to show four digits after the decimal place, followed by either an "N" or a "W", depending on whether the frequency is narrow or wide band. Mode refers to either "A" or "D" indicating analog or digital (e.g. Project 25) or "M" indicating mixed mode. All channels are shown as if programmed in a control station, mobile or portable radio. Repeater and base stations must be programmed with the Rx and Tx reversed.

**HEALTH AND SAFETY MESSAGE:**  
*SAFETY* starts with *YOU*

INCIDENTS: **Cougar Rock Complex**

DATE: July 15, 2021  
TIME: Day 0600-2200

**Keep Your Guard Up!**

- Maintaining situational awareness takes effort!
- Continue planning to provide your safety, and *then* accomplish the mission!
- Watch for complacency in yourself and others, and help them stay sharp.
- Watch for signs of fatigue and take action to address it.
- Be methodical and relentless in your efforts to get the job done safely!
- YOU are the value at risk!!!

**Keep your head in the game**



Your perception is your reality, but does your “reality” match what is actually happening around you?

Quote for the day: “Do what you can, with what you have, where you are”  
Theodore Rossevelt

**Your Safety Team!!**

Marvin Carpenter, Jim Freestone, and Opie Blackwell.

Remember Each of **You** are safety Officers!!

## MEDICAL PLAN (ICS 206 WF)

<b>1. Incident/Project Name</b>		<b>2. Operational Period</b>					
Cougar Rock Complex		Date/Time 7-15-21 0700-1900					
<b>3. Ambulance Services</b>							
Name	Complete Address	Phone & EMS Frequency	Advanced Life Support (ALS) Yes      No				
Clearwater county ambulance	1195 Riverside ave, Orofino	911 208-476-3771	yes				
Best Practice Medicine	On site Boehls spike		no				
Best Practice Medicine	On site Headquarters		no				
Army corp of engineers	Boat rescue	208-716-0910 Paul Pence	no				
Sheriff	Boat rescue	911	no				
<b>4. Air Ambulance Services</b>							
Name	Phone	Type of Aircraft & Capability					
Life Flight Lewiston	911 or 800-232-0911	Night vision, ALS transport					
Two Bear Air	911 or 406-758-5585	Night vision, hoist, can transport to ground unit or private aeromed unit.					
<b>5. Hospitals</b>							
Name Complete Address	Lat: Long:	Travel Time (from ICP)		Phone	Helipad Yes No		Level of Care Facility
		Air	Ground				
Clearwater county Hospital 1195 riverside Ave Orofino	' ,		4 min	208-476-4555	X		Critical Access
St Josephs Regional Trauma Center Lewiston	Lat: N 46°25.016' Long: W 117°01.449'		57 min	208-743-2511	X		Level 2 trauma
Benewah community Hospital 229 south 7 <sup>th</sup> st St Maries	Lat: 47.3146° N Long: 116.5674°		129min	208-245-5551			Critical care access
Harborview Burn Center 395 9 <sup>th</sup> ave Seattle	Lat: 47.6039° N Long: 122.3241° W		346min	206-520-5000	X		Level 1 trauma center
<b>Special Notes</b>							
The Medical unit will be open from 0600-2200. After hours contact the incident ambulance and the MEDL in case of an emergency in camp or on the line.							
<b>6. Division</b>		<b>Area Location Capability</b>					
<b>Branch 1 Boehl's</b>		<b>EMS Responders &amp; Capability:</b>		<b>Cody Brandt EMTF (medic3) Adam Osiadacz EMPF (medic 4)</b>			
		<b>Equipment Available on Scene:</b>		ALS & BIS , sked kit, 1 <sup>st</sup> aid support kit, O2 AED			
		<b>Medical Emergency Channel:</b>					
		<b>ETA for Ambulance to Scene:</b>		60 minutes			
		<b>Air/Ground:</b>					
		<b>Approved Helispots:</b>		<b>Boehls spike</b>			

## MEDICAL PLAN (ICS 206 WF)

<h3>Branch 2 Headquarters</h3>	EMS Responders & Capability:	Gwen Couture MEDL Misty Bauer EMTF (medic 1) Yoaila Kopelowitz EMTF (medic2)
	Equipment Available on Scene:	AED, BLS line gear, sked, O2 AED
	ETA for Ambulance to Scene:	Ambo 2 on scene
	Approved Helispot:	
	Lat:	+46° 37.80072159'
	Long:	-115° 48.52494863'
<h3>ICP Orofino</h3>	EMS responders and capability	Teri Miller EMPT
	Equipment Available on Scene:	ALS AED SPINAL IMOBILIZATION
	Medical Emergency Channel:	
	ETA for Ambulance to Scene:	4 MIN
1. Prepared by (Medical Unit Leader)	Date/Time	2. Reviewed By (Safety Officer)
Teri Miller 406-544-3070 <i>Teri Miller</i>	07/14/21 1900	Marvin Carpenter 07/14/21 1900 <i>Marvin Carpenter</i>



## ASSIGNMENT-SPECIFIC MEDICAL EMERGENCY ACTION PLAN

### Pre-Planning for today's assignment

What are the likely hazards that could cause injuries? What kind of severe injuries?		
Who is the likely in-charge DIVS or overhead for an emergency in your assigned area today? (i.e. "Division Zulu")		
Who are the Medical personnel assigned to your part of the incident? What are their capabilities?		
Other Emergency Responders: fire dept., crash rescue, ambulance?		
Communications: Command channel, Air to Ground, Medical helicopters, local rescue/medical?		
Transportation methods available	Ground vehicle, drop point, coordinates, travel route?	
	Aircraft I.D, Helispot names, coordinates? Hoist capable, internal transport	
	Other available methods - contingency	
Most likely workforce for evacuation		

### Response checklist

#### **Who takes charge?**

- DIVS or designated Overhead manages the overall scene and evacuation process.
- Medical personnel and emergency responders manage patients and assist in rescue/extrication.
- OPS and IC make command decisions so the emergency can be given full attention and management. They continue to manage ongoing incident operations.

#### **Response sequence:**

- First, secure the scene and protect responders and patients from further injury. Render first aid.
- Clear the Command channel for "Emergency Traffic only" if this is a critical emergency. If not, inform Communications of non-critical-emergency status and use normal communications.
- Contact closest Medical personnel and DIVS or designated Overhead for response.

**Information for Communications:** Medical Incident Report – See last page of IAP and IRPG pages 118 and 119.

**Helicopter Extrication Operations:** See IRPG pages 116 and 117.

**Severe Weather:** In the event of forecasted severe weather, implement Incident Severe Weather Plan.

**Incident Within Incident:** Upon arriving at the incident, all overhead should obtain and review the team's Incident Within Incident Plan.

## Incident within Incident (IWI) Plan

### Immediate response:

- Secure the site to prevent further injury to victims and responders.
- Render first aid using crew and line EMT's and nearby forces.
- Designate a Point of Contact at the scene. Notify communications who this is and when it changes.
- Notify Communications and Medical Unit. Identify whether this is a life threatening emergency or less serious injury.
- Communications requests "Emergency Traffic" to clear channel if it is a life threatening emergency.
- Transmit critical information from the scene to Communications: Type and extent of injury; Airway or breathing problems; serious bleeding; EMT present or needed; ALS needed. Give specific location of victim: Lat/Long; ground or air access; DP#; Helispot or helicopter medevac site. Do not use victim or crew names in any communications. **Use the Medical Incident Report, pages 118 and 119 of the Incident Response Pocket Guide (IRPG) as a checklist.**
- Request appropriate Medical Unit, incident resource and local 9-1-1 EMS response.
- Designate an Incident Within Incident Commander (IWIC). DIVS is normally in charge. Other Operations persons may be in charge until relieved. Notify communications who this is and when it changes.
- Communications: If requested, notify Local 9-1-1 EMS and other responders right away. Provide staging information, medical evacuation location(s), IWIC, medical contact information and communication protocol. Post Medical Incident Report at Communications desk to facilitate sharing critical information.
- Medical Unit Leader should assist the IWIC in coordinating any Local EMS, incident medical, and transportation response.
- Communications notifies DIVS, Line OPS and SOF2 to respond to the scene.
- In the event we are shadowing another team, provide whatever assistance we can to help them with the situation.

### Aviation Mishap:

For an aviation accident within the fire area, the standard Incident within Incident protocols will be followed.

For an aviation accident outside of the fire area, the following procedure will be followed in addition to the Incident within an Incident Protocols.:

If an aviation accident is suspected or reported, Helibase will dispatch Air Attack to the location to assess the scene. If no Air Attack is available than the closest aviation resource will be dispatched. Helibase will then make a determination on the most appropriate helicopter available to respond for rescue considering time, capabilities, access, etc. Once on scene the helitack on site will designate a POC to be in charge of the situation until relieved. Once these resources are on scene and communication is established the Incident within an Incident protocols remain the same.

# **FINANCE**

**The following resources please  
call finance at 208-820-4661:**

**Soloman Fire**

**Oxford Inc.**

**SGS**

**Northwest Fire**

**IFM**

**Dan Patterson**

**Leslie Blackwell**

# IAP-Branch 1

Cougar Rock Complex

IDCTS-000623

July 15, 2021

3167.5 acres at 22:30, 07/13/2021

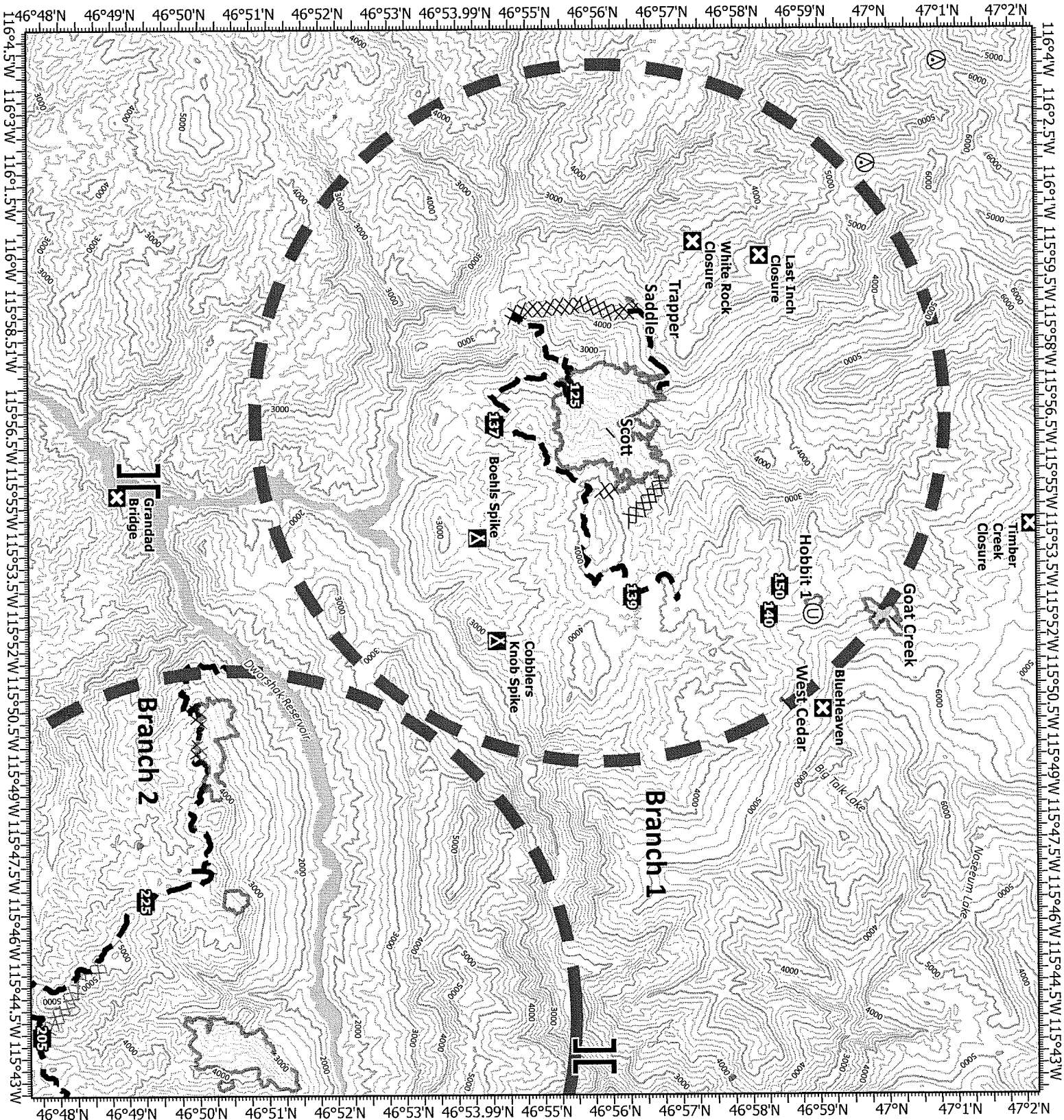


- Wildfire Daily Fire Perimeter
- Completed Dozer Line
- Planned Dozer Line
- Planned Road as Line
- Planned Secondary Line
- Temporary Flight Restriction
- Aerial Hazard
- Unimproved Landing Area
- Branch Break
- Drop Point
- Closure
- Camp



S. Tipp  
7/14/2021 1604

North American 1983 Datum.



# IAP-Branch 2

Cougar Rock Complex

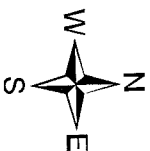
IDCTS-000623

July 15, 2021

3167.5 acres at 22:30, 07/13/2021

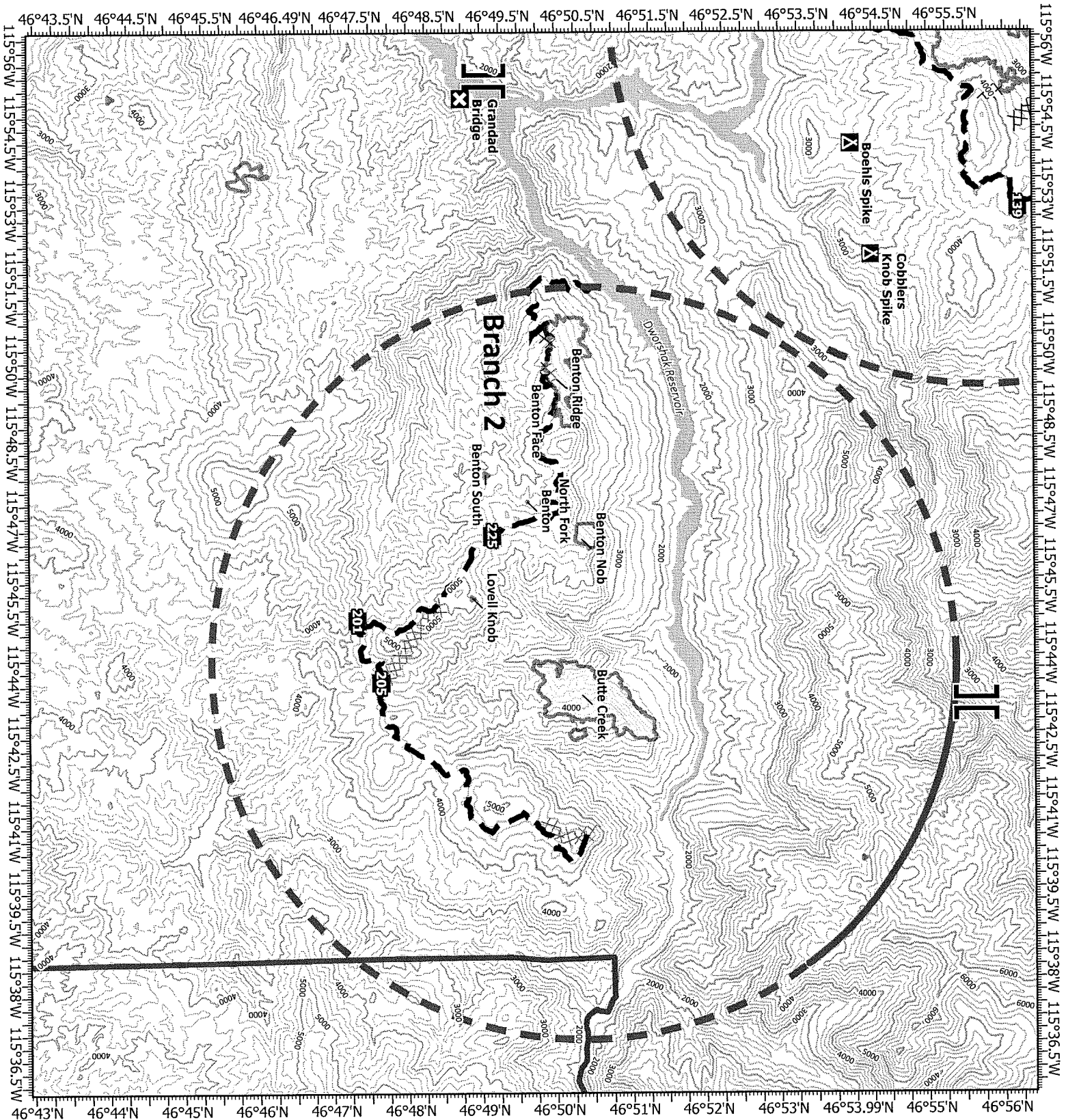


- Wildfire Daily Fire Perimeter
- USFS 1A
- Completed Dozer Line
- Planned Dozer Line
- Planned Road as Line
- Planned Secondary Line
- Temporary Flight Restriction
- Branch Break
- Drop Point
- Closure
- Camp

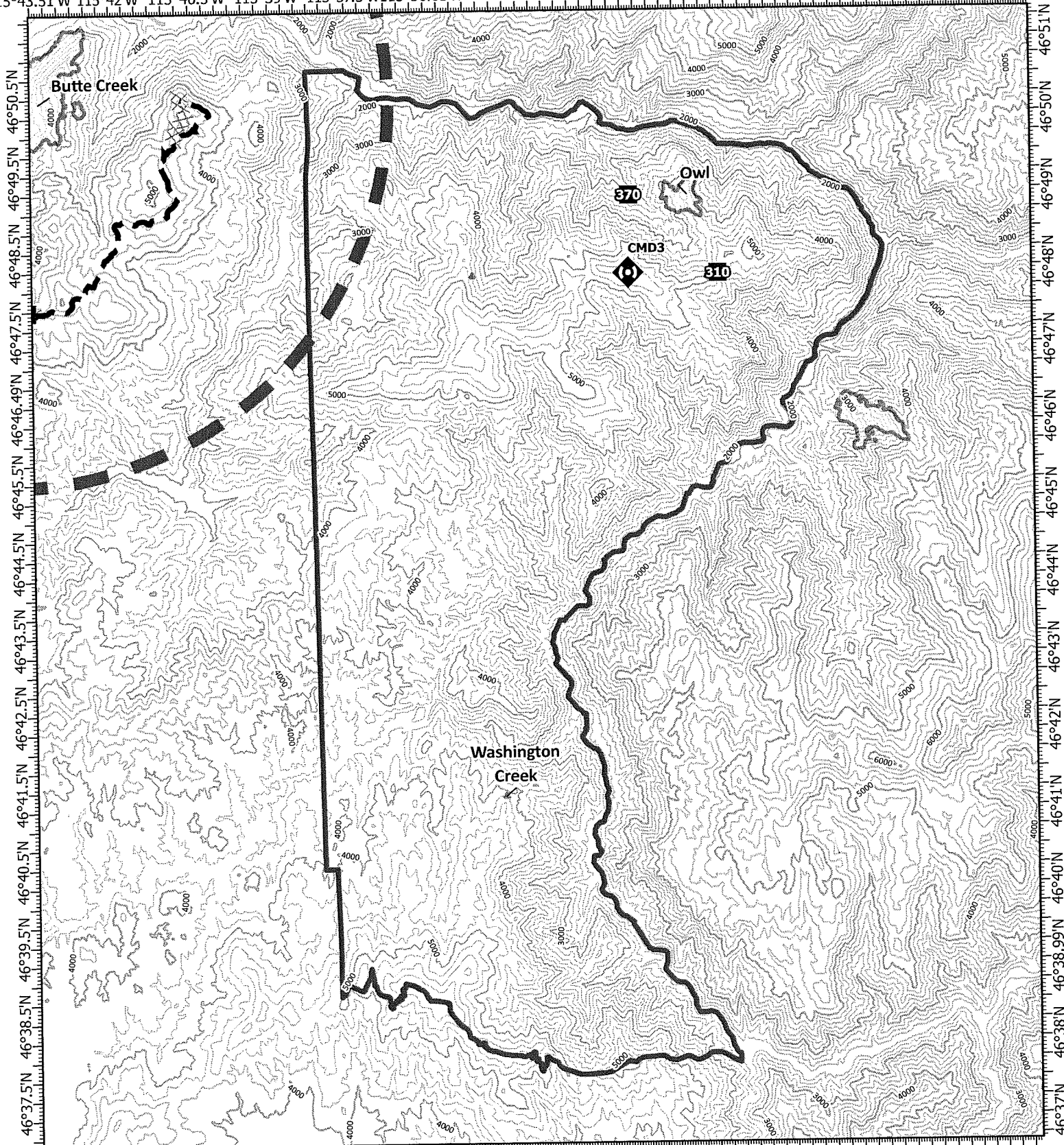


S. Tripp  
7/14/2021 1544

North American 1983 Datum.



15°43.51'W 115°42'W 115°40.5'W 115°39'W 115°37.5'W 115°36.01'W 115°34'W 115°32.5'W 115°31'W 115°29.5'W 115°28'W 115°26.5'W 115°25'W



**IAP-Branch 2 IA**  
Cougar Rock Complex  
IDCTS-000623  
July 15, 2021  
3167.5 acres at 22:30, 07/13/2021

- Wildfire Daily Fire Perimeter
- USFS IA
- Planned Dozer Line
- Planned Road as Line
- Temporary Flight Restriction
- Drop Point
- Repeater



0 0.5 1 2 Miles



S. Tripp  
7/14/2021 1620  
North American 1983 Datum



# MEDICAL PLAN (ICS 206 WF)

Controlled Unclassified Information//Basic

Medical Incident Report					
<b>FOR A NON-EMERGENCY INCIDENT, WORK THROUGH CHAIN OF COMMAND TO REPORT AND TRANSPORT INJURED PERSONNEL AS NECESSARY.</b>					
<b>FOR A MEDICAL EMERGENCY: IDENTIFY ON SCENE INCIDENT COMMANDER BY NAME AND POSITION AND ANNOUNCE "MEDICAL EMERGENCY" TO INITIATE RESPONSE FROM IMT COMMUNICATIONS/DISPATCH.</b>					
<b>Use the following items to communicate situation to communications/dispatch.</b>					
<b>1. CONTACT COMMUNICATIONS / DISPATCH</b> (Verify correct frequency prior to starting report) <i>Ex: "Communications, Div. Alpha. Stand-by for Emergency Traffic."</i>					
<b>2. INCIDENT STATUS:</b> Provide incident summary (including number of patients) and command structure. <i>Ex: "Communications, I have a Red priority patient, unconscious, struck by a falling tree. Requesting air ambulance to Forest Road 1 at (Lat./Long.) This will be the Trout Meadow Medical, IC is TFLD Jones. EMT Smith is providing medical care."</i>					
Severity of Emergency / Transport Priority	<input type="checkbox"/> <b>RED / PRIORITY 1</b> Life or limb threatening injury or illness. Evacuation need is <b>IMMEDIATE</b> <i>Ex: Unconscious, difficulty breathing, bleeding severely, 2<sup>o</sup> – 3<sup>o</sup> burns more than 4 palm sizes, heat stroke, disoriented.</i> <input type="checkbox"/> <b>YELLOW / PRIORITY 2</b> Serious Injury or illness. Evacuation may be <b>DELAYED</b> if necessary. <i>Ex: Significant trauma, unable to walk, 2<sup>o</sup> – 3<sup>o</sup> burns not more than 1-3 palm sizes.</i> <input type="checkbox"/> <b>GREEN / PRIORITY 3</b> Minor Injury or illness. <b>Non-Emergency transport</b> <i>Ex: Sprains, strains, minor heat-related illness.</i>				
Nature of Injury or Illness & Mechanism of Injury			Brief Summary of Injury or Illness <i>(Ex: Unconscious, Struck by Falling Tree)</i>		
Transport Request			Air Ambulance / Short Haul/Hoist Ground Ambulance / Other		
Patient Location			Descriptive Location & Lat. / Long. (WGS84)		
Incident Name			Geographic Name + "Medical" <i>(Ex: Trout Meadow Medical)</i>		
On-Scene Incident Commander			Name of on-scene IC of Incident within an Incident <i>(Ex: TFLD Jones)</i>		
Patient Care			Name of Care Provider <i>(Ex: EMT Smith)</i>		
<b>3. INITIAL PATIENT ASSESSMENT:</b> Complete this section for each patient as applicable (start with the most severe patient)					
Patient Assessment: See IRPG page 106					
Treatment:					
<b>4. TRANSPORT PLAN:</b> Evacuation Location (if different): (Descriptive Location (drop point, intersection, etc.) or Lat. / Long.) Patient's ETA to Evacuation Location:					
Helispot / Extraction Site Size and Hazards:					
<b>5. ADDITIONAL RESOURCES / EQUIPMENT NEEDS:</b> <i>Example: Paramedic/EMT, Crews, Immobilization Devices, AED, Oxygen, Trauma Bag, IV/Fluid(s), Splints, Rope rescue, Wheeled litter, HAZMAT, Extrication</i>					
<b>6. COMMUNICATIONS: Identify State Air/Ground EMS Frequencies and Hospital Contacts as applicable</b>					
Function	Channel Name/Number	Receive (RX)	Tone/NAC *	Transmit (TX)	Tone/NAC *
COMMAND					
AIR-TO-GRND					
TACTICAL					
<b>7. CONTINGENCY: Considerations:</b> If primary options fail, what actions can be implemented in conjunction with primary evacuation method? Be thinking ahead.					
<b>8. ADDITIONAL INFORMATION:</b> Updates/Changes, etc.					
<b>REMEMBER:</b> Confirm ETA's of resources ordered. Act according to your level of training. Be Alert. Keep Calm. Think Clearly. Act Decisively.					