

# Cougar Rock Complex

ID-CTS-000623

PNN5HF (1522)



## Incident Action Plan

Friday

July 16, 2021

Operational Period 0600 - 2200

*Virtual Check-In*




*Got Maps? IAP?*



*Got Time?*



*Fire information [2021.cougarrock@firenet.gov](mailto:2021.cougarrock@firenet.gov) or 208-494-1943*

<b>INCIDENT OBJECTIVES</b>	1. Incident Name Cougar Rock Complex	2. Date Prepared 07/16/2021	3. Time Prepared 1900
<p>4. Objectives</p> <p><b><u>High Value Assets and Resources to be Protected:</u></b></p> <ul style="list-style-type: none"> <li>• Private properties, infrastructure and timber resources.</li> <li>• Habitat reparation and watershed, cultural, historic, and heritage sites.</li> <li>• Waterways and riparian areas.</li> </ul> <p><b><u>Leader's Intent:</u></b></p> <ul style="list-style-type: none"> <li>• Protect human life. Firefighter and public safety will be given the highest priority at all times. Risks to firefighters and the public will be managed by utilizing a risk-based approach to decision making. An emphasis will be placed on exposure to accidents and heat related illness.</li> <li>• Minimize the exposure of the public and responders to transmission or infection from COVID-19 by following agency guidance and established CDC, local, state and national guidance to ensure a healthy work environment.</li> <li>• Communicate proactively with agency staffs, cooperators, permittees and stakeholders, including PotlachDeltic, Idaho Department of Lands, United States Army Corps of Engineers, United States Forest Service, the Nez Perce Tribe, and the Clearwater County Sheriff, Emergency Management Coordinator and County Commissioners, through effective and timely dialogues, meetings and comprehensive information sharing for purposes to include public safety, evacuations, traffic control, road closures, structure protection and any other safety risk to public and industrial operators.</li> <li>• Inform the Agency Administrator and Association Line Officer of any public meetings and media contacts and coordinate with the Clearwater IDL and CPTPA to ensure that we build on existing relationships, contacts and key messages.</li> <li>• Utilize appropriate fire strategies to minimize fire impacts to residences, commercial properties, critical community infrastructure and natural resources, and critical watersheds.</li> <li>• Implement appropriate measures to limit the spread of noxious weeds, including washing all vehicles and equipment upon arrival at the incident and departure from the incident.</li> <li>• Work with agency staff and cooperators to assess wildfire effects to infrastructure and watersheds and develop and implement short-term actions to address high-risk watershed impacts.</li> <li>• Commit incident resources only where there is a high probability of meeting reasonable objectives or when the risk of injury or death can be mitigated.</li> <li>• Follow and adhere to the 10 standard orders. Continually evaluate the 18 watch out situations through clear concise direction and understanding of assignments and necessary mitigations.</li> <li>• Maintain and foster relationships with users of public lands, landowners, agencies and local communities.</li> <li>• Maintain the highest degree of professionalism on the incident and within local communities.</li> <li>• Adhere to applicable work-rest guidelines to reduce fatigue and ensure that assigned fire-fighting personnel receive adequate rest.</li> <li>• Maintain a workplace and atmosphere of mutual respect and free of any harassment. There will be no tolerance for any unethical, illegal drug or alcohol related incidents.</li> <li>• Effectively manage costs commensurate with the high value assets and resources to be protected and risks.</li> <li>• Efficiently demobilize resources in a manner that will ensure safe travel and "right-sizing" consistent with demobilization glidepath direction.</li> </ul> <p><b><u>Operational Objectives:</u></b></p> <ul style="list-style-type: none"> <li>• Scout for and prioritize potential fire suppression and values at risk protection opportunities.</li> <li>• Gather intelligence on personnel and equipment on the incident.</li> <li>• Engage in fire suppression and/or values at risk protection actions and/or point protection when safe to do so with available resources.</li> <li>• Respond as appropriate to, and commensurate with the prioritization of, new/emerging incidents.</li> <li>• Act with appropriate prioritization if presented with the opportunity to rehabilitate resource damage caused by suppression actions.</li> </ul>			
5. Prepared By (Planning Section Chief) Mike Rubenstein:		6. Approved By (Incident Commander) 	

ORGANIZATION ASSIGNMENT LIST		9. Operations Section	
1. Incident Name	Cougar Rock Complex	Branch 1 Chief-Line	Joe Brabender, Danny Lemer (t)
2. Date	7/15/2021 3. Time 2000	Branch 2 Chief-Line	Don Hammack, Manny Mendoza (t)
4. Operational Period	7/16/2021 0600-2200	Chief-Planning	Ron Naber
5. Incident Commander and Staff		a. Branch I - Division/Groups	
Incident Commander	Jay Winfield, Paul Roose (t), Rich Cowger (t)	Branch Director	Joe Brabender, Danny Lemer (t)
Deputy	Bob Fry	Deputy	
Safety Officer	Marvin Carpenter, Jim Freestone, Opie Blackwell	Division/Group	Hobbit Fire Group Ben Wagner, Paul Wagner
Information Officer	Jill Cobb, Nick Cronquist, Joe Holzinger (t)	Division/Group	Scott Fire Group Jerod Russell, Dave Gregory (t)
Liaison Officer	Chris Grove	Division/Group	
6. Agency Representative		Division/Group	
Agency	Name	Division/Group	
CPTPA	Kane Steinbrueker	b. Branch II - Division/Groups	
PottatchDeltic	Rich McMillan	Branch Director	Don Hammack, Manny Mendoza (t)
IDL - St. Joe	Rick Areano	Deputy	
IDL	Dean Johnson	Division/Group	Benton Fire Group RJ Hannah, Joe Raspotnik (t)
IDL	Kirk Kottkey	Division/Group	Butte Fire Group Mike West
Clearwater Co. Sheriff	Chris Goetz	Division/Group	FS Fire Group
Army Corps. of Engineers	Paul Pencil	Division/Group	
USFS - NPF	Rob Gump	Division/Group	
USFS - IPNF	Matt Davis	c. Branch III - Division/Groups	
Nez Perce Tribe Liaison	Christy Bradbury	Branch Director	
		Deputy	
7. Planning Section		Division/Group	
Chief	Will Bernard, Mike Rubenstein	Division/Group	
Resource Unit	Jody Pettit	Division/Group	
Demobilization Unit	John Noneman (t)	Division/Group	
Documentation Unit	Jan Fleming	Division/Group	
Situation Unit	Roger Jackson	d. Air Operations Branch	
GISS	Andrew Mock, Brandt Hines, Sam Tripp (t)	Air Ops Branch Director	Sal Garcia
Fire Behavior	Eric Trimble, Nate Lancaster	Air Attack Supervisor	
IT Support	Ed Yeager, Bryce Nordgren, Dominic Rogers (t)	Air Attack Supervisor	
Check-In	Cynithia Wharton	Helicopter Coordinator	
		Air Tanker Coordinator	
8. Logistics Section		10. Finance Section	
Chief	Tyler Rae, Jeremy Walla	Chief	Bertalee Mottern, Teresa Crow
Facilities Unit	AJ Angelo	Time Unit	Annette Hoyer
Supply Unit	Bryan Connelley, Perry Stebbins	Equipment Unit	Lisa Hawdon
Ordering Unit	Tyre Holfeltz	Personal Time	Mary Dykstra (v), Nolan Baldwin (t)
Ground Support Unit	AJ Angelo	Cost Unit	Lisa Dickinson (t)
Comm Unit	Thomas Robbins, Julie Sendra (t)	Comp Claims	Suzanne Vernon (t)
Medical Unit	Teri Miller, Gwen Couture	IBA	Wendy Walker
Security Unit	Sean Nelb		
Food Unit	Mike Oxborrow	Prepared by Jody Pettit (Resource Unit Leader)	

## Fire Weather Forecast

**FORECAST NO:** 7  
**PREDICTION FOR:** Day SHIFT  
**SHIFT DATE:** Thursday, 07-16-2021

**NAME OF FIRE:** Cougar Rock Complex  
**UNIT:** CPTPA  
**SIGNED:** Eric Trimble/Nathan Lancaster, FBAN

**TIME AND DATE**  
**FORECAST ISSUED:** 1900 7/15/2021

**WEATHER DISCUSSION:** For Cougar Rock Complex (Hobbit 1, Scott, Trapper Saddle, Goat Creek)

A dry weather pattern will continue through the weekend. The air mass will remain very dry with poor humidity recovery Friday night. Temperatures will become hot again this weekend on Sunday. The atmosphere will also become increasingly unstable Sunday with Haines 6 conditions possible.

### **Today Friday, July 16:**

**WEATHER:** Sunny, areas of smoke

**TEMPERATURES:** Fire: 80-85°F

**HUMIDITY:** Fire: 25-30%

**WINDS (20ft):** West winds 3 to 6 mph with gusts up to 15 mph after 1300.

**HAINES INDEX:** 5 Moderate      **LAL:** 1      **CWR:** 0%

**WEATHER DISCUSSION:** For Cougar Rock Complex (Butte Creek, Benton Ridge Fires, Lovell Knob, Sheep, Owl)

As high pressure reestablishes over the region, a warming and drying trend will occur. That being said, with as much smoke in the area as there is, it may influence temperatures by limiting their full heating potential. A warming and drying trend is expected, particularly going into Saturday as temperatures continue to rise and humidity continues to lower. Thermal belts will begin to strengthen overnight, with winds remaining mostly terrain-driven through the period.

### **Today Friday, July 16:**

**WEATHER:** Sunny, areas of smoke

**TEMPERATURES:** Fire: 83-88 °F

**HUMIDITY:** Fire: 23-27%

**WINDS (20ft):** Upslope, upvalley 3 to 5 mph.

**HAINES INDEX:** 4 Low      **LAL:** 1      **CWR:** 0%

### **EXTENDED FORECAST: Saturday - Wednesday**

Saturday.....Sunny, with a high near 80°F. Winds: West 3-6 mph w/gusts up to 13 mph by 1300; Min RH: 30%

Sunday.....Sunny, with a high near 85°F. Slight chance of rain or dry T-storms. Possible high Haines

Monday.....Partly Cloudy, with a high near 85°F. Slight chance of rain or dry T-storms.

Tuesday.....Partly Cloudy, with a high near 81°F. Slight chance of rain or dry T-storms.

Wednesday..Partly Cloudy, with a high near 85°F

## FIRE BEHAVIOR FORECAST

<b>FORECAST NUMBER:</b> 7	<b>INCIDENT TYPE:</b> Wildfire
<b>FIRE NAME:</b> Cougar Rock Complex	<b>OPERATIONAL PERIOD:</b> July 16, 2021 Friday
<b>DATE ISSUED:</b> July 15, 2021	<b>TIME ISSUED:</b> 1800
<b>UNIT:</b> ID-CPTPA	<b>PREPARED BY:</b> Eric Trimble/Nate Lancaster – FBAN

### INPUTS

#### **WEATHER SUMMARY:**

**Sky Weather:** Smoky/hazy skies. **CWR (>0.10"):** 0%, **Temps:** 80-85°, **RH:** 23-30%, **Haines:** 4-5 Low to Moderate, **LAL:** 1  
**Winds (20 ft):** West 3 to 6 mph with gusts to 15 mph on the higher ridgetops after 1300.

#### **FUELS: Cougar Rock Complex- 14 fires**

Mixed conifer forest dominated by Western Red Cedar, Douglas Fir, Western Larch, and Grand Fir. Subalpine Alpine Fir, Engelmann Spruce and Lodge Pole Pine at the higher elevations (>4,800'). All age and size classes of conifer fuels with relatively high crown bulk density and low crown base heights. Light to moderate amounts of dead fine fuels and logging/thinning slash will contribute to surface fire spread. Herbaceous and live woody fuels are green and will generally not contribute to fire spread.

**Fine Fuels:** 5-7%; **10-hr:** 8%; **100hr:** 9%; **1000hr:** 12%

**ERC:** 95<sup>th</sup> to 98<sup>th</sup> percentile. **Max spotting distance:** 0.2 Mile

### OUTPUTS - FIRE BEHAVIOR

#### **General:**

Terrain and fuel-driven fire. Expect active surface fire activity within surface and ground fuels with single to group-tree torching and short-range spotting. Highest activity to occur within Subalpine Fir/Engelmann Spruce stands at the higher peaks and on the steeper sites (>60% slope) with 70-80% consumption of the 1-hr, 10-hr and 100-hr fuels. Smoke from other fires and under inversion may temper fire activity. Live fuels and young conifer plantations should discourage crown fire activity, until fuels dry in the upcoming weeks.

Backing/flanking spread 1-2 ft/min with flames 2-4 ft. Head fire with possible 5-8 ft. flame lengths and 9-12 ft/min rates of spread on the steeper sites, higher with torching and when slope and wind align. Spotting will increase as the inversion breaks and as receptive fuels continue to warm and dry.

#### **Specific:**

**Benton Fires:** Continued movement to the NW toward the Reservoir.

**Butte Creek:** Continued fire growth towards the SE as up valley, up canyon winds push the fire to the east.

**Goat Creek:** Sub-alpine fir will continue to promote fire spread thru multiple tree and group torching in most directions.

**Scott Road:** Continued Fire spread in the Floodwood drainage, N on FS ground towards Hemlock Creek Rd.

**Probability of Ignition (PIG):** 70-80% during the peak of the burning period.

**AIR OPERATIONS:** Marginal VFR due to widespread smoke. Inversion to lift late afternoon.

**SAFETY:** "Safety is something that happens between your ears, not something you hold in your hands."

ASSIGNMENT LIST		1. Branch	2. Division/Group			
		1		Hobbit Fire Group		
3. Incident Name		4. Operational Period				
Cougar Rock Complex		Date: 07/16/2021		Time: 0600-2200		
5. Operations Personnel						
Operations Chief - Line/ Branch Director	Joe Brabender, Danny Lemer (t)		Group Supervisor	Ben Wagner, Paul Wagner (t)		
Operations Chief - Planning	Ron Naber		Air Branch Director	Sal Garcia		
6. Resources Assigned This Period						
Strike Team/Task Force/ Resource Designator	Last Shift	Leader	No. Pers.	Trans. Needed	Drop Off PT./Time	Pick Up PT./Time
C-9999 Redding Jumpers	7/23	Mitch Goodman	8	Y		
C-5 HC2 Franco Reforestation	7/25	Jose Mendoza	20	N		
O-9998 WFM Mammoth	7/23	Grant Jensen	8	N	O-1 Merry Mix 1	
O-43 FAL1 Scholl Fallers	7/24	James Demastus	1	N		
O-44 FAL1 Scholl Fallers	7/24	Pat Richardson	1	N		
O-9994 FAL1	7/24	Mike Langston	1	N	O-1 Hobbit	
E-9 ENG6 Solomon Fire	7/20	Tad Namere	3	N	Butte Creek	
E-17 WTS2 Archer Mtn	7/24	Dave Clew	1	N	Butte Creek	
E-18 WTS2 Swanson Logging	7/23	Derrick Winslow	1	N		
E-46 DOZ4 Bear Creek	7/23	Brian Doye	2	N	Butte Creek	
E-9002 DOZ2 J&J	7/23	Jerod Mangum	2	N		
E-9997 DOZ2 CPTPA Cat D6		Jeremy Chase	1	N	E-3 Hobbit	
O-35 EMPF	7/27	Adam Osiadacz	1	N		
O-46 EMTF IDAHO BMP	7/27	Cody Brandt	1	N		
E-13 AMBU Best Practices 1	7/27	B Quinland, R Barron	2	N		
O-15 SOF2	7/25	Opie Blackwell	1	N		
7. Control Operations						
Group includes Hobbit, Goat Creek, Trapper Saddle and West Cedar fires.						
Task: Mop up fires two chains in from fire perimeters.						
Purpose: Secure fires so additional resources can be assigned suppression responsibilities on the Goat Fire.						
End State: Progression of fires has been halted.						
8. Special Instructions						
Utilize LCES.						
Logistic orders to Group Supervisor by 1000 for next shift.						
Consolidate trash for back haul.						
Disengage from cedar snag areas when winds are 5 mph or greater.						
Grandad Bridge and Captains Cabin road closures will be staffed by Clearwater Co. S.O. Deputies from 0600-1800 and 1800-0600.						
9. Division/Group Communication Summary						
Function	Frequency - RX	Frequency - TX	Tone	Channel	Comments	
COMMAND 1	169.7550	167.1000	146.2	1		
CPTPA 2	153.0650	158.1600	97.4	5		
TAC 6	168.0500	168.0500	146.2	6		
SCOTT A/G	166.6000	166.6000		14		
Prepared by (RESL)		Approved by (PSC2)		Date	Time	
Jody Pettit		Mike Rubenstein		07/15/2021	2000	

ASSIGNMENT LIST		1. Branch	2. Division/Group			
		1	Scott Fire Group - Page 1			
3. Incident Name		4. Operational Period				
Cougar Rock Complex		Date: 07/16/2021		Time: 0600-2200		
5. Operations Personnel						
Operations Chief - Line/ Branch Director	Joe Brabender, Danny Lemer (t)		Group Supervisor	Jerod Russell, Dave Gregory (t)		
Operations Chief - Planning	Ron Naber		Air Branch Director	Sal Garcia		
6. Resources Assigned This Period						
Strike Team/Task Force/ Resource Designator	Last Shift	Leader	No. Pers.	Trans. Needed	Drop Off PT./Time	Pick Up PT./Time
O-18 Module IA-IDL-321		Adam Canfield	4	N		
C-9001 Module SJS Timber		Jeremy Shawver	6	N	O-9 Scott	
E-9003 ENG4 CT		Gehrman	2	N		
E-8 ENG6 Rocky Mtn Fire	7/20	KC Nutt	3	N	Butte Creek	
E-11 ENG6 Cahoon	7/25	Randy Muttson	3	N	Butte Creek	
O-76 - O-79 FAL1 (t) Hanson Fallers		Jeff Strong	4	N		
O-19 HEQB		Matt Hajos	1	N		
E-9001 DOZ2		Aaron Workman	2	N		
E-40 DOZ2 Ray Day Logging		Junior	1	N		
E-9004 DOZ2 Hanson Logging		Stonehocker	1	N		
E-9006 DOZ2 Kuykendall		Kiln	1	N		
E-9007 DOZ3 Hanson Logging		Jenson	1	N		
E-9 EXCA Quality Excavation	7/25	Doug Johnson	1	N	Cougar	
E-38 EXCA L&S		Bruce	1	N		
E-39 FEL1 Ray Day Logging		Junior	1	N		
E-9010 GRDR Dean		Darrar	1	N		
E-9011 GRDR Hanson Logging		Hanson	1	N		
E-41 LOWB Ray Day Logging		Junior	1	N		
O-35 EMPF	7/27	Adam Osiadacz	1	N		
O-46 EMTF IDAHO 02	7/27	Cody Brandt	1	N		
E-13 AMBU Best Practices 1	7/27	B Quinland, R Barron	2	N		
O-15 SOF2	7/25	Opie Blackwell	1	N		
7. Control Operations						
Task: Continue to prep road for burnout operations. Look for opportunities for dozer lines closer to the proximity of the fire.						
Purpose: Reduce the loss of high value timber.						
End State: The Scott Fire has a viable fire suppression/values at risk protection plan.						
8. Special Instructions						
Utilize LCES.						
Safely establish containment lines.						
Grandad Bridge and Captains Cabin road closures will be staffed by Clearwater Co. S.O. Deputies from 0600-1800 and 1800-0600.						
9. Division/Group Communication Summary						
Function	Frequency - RX	Frequency - TX	Tone	Channel	Comments	
COMMAND 1	169.7550	167.1000	146.2	1		
CPTPA 2	153.0650	158.1600	97.4	5		
TAC 7	168.2000	168.2000	146.2	7		
SCOTT A/G	166.6000	166.6000		14		
Prepared by (RESL)		Approved by (PSC2)		Date	Time	
Jody Pettit		Mike Rubenstein		07/15/2021	2000	





ASSIGNMENT LIST		1. Branch	2. Division/Group			
		2		Benton Fire Group – Page 1		
3. Incident Name	Cougar Rock Complex	4. Operational Period	Date: 07/16/2021	Time: 0600-2200		
5. Operations Personnel						
Operations Chief – Line/ Branch Director	Don Hammack, Manny Mendoza (t)	Group Supervisor	RJ Hannah, Joe Raspotnik (t)			
Operations Chief - Planning	Ron Naber	Air Branch Director	Sal Garcia			
6. Resources Assigned This Period						
Strike Team/Task Force/ Resource Designator	Last Shift	Leader	No. Pers.	Trans. Needed	Drop Off PT./Time	Pick Up PT./Time
O-3 TFLD	7/24	Mitch Scates	1	N		
O-21 TFLD (T)	7/24	Lem Johnson	1	N		
C-6 HC2 Franco	7/27	Noe Franco-Guzman	20	N		
C-7 HC2 Franco	7/27	Rafael Alcantar-Cisneros	20	N		
O-37 FAL1		Cody Steinbruecker	1	N	O-1 Benton	
O-9005 FFT1		Nate Hess	1	N		
E-11 ENG4 Hart	7/24	Eugene Weasel	3	N	E-2 Hobbit, Butte Creek	
E-12 ENG6 Metal Works	7/24	Rhys Anderson	3	N	Butte Creek	
E-14 WTS2 Fox Creek		Maureen West	1	N	Butte Creek	
E-15 WTS2 Oxford	7/24	Hauns Wardays	1	N	Butte Creek	
E-16 WTS2 Oxford	7/24	Charley Clark	1	N	Butte Creek	
E-17 WTS2 Furry Concrete		Lee Stener	1	N	Cougar	
O-6 HEQB		Scott Bonk	1	N		
O-7 HEQB		Josh Brandt	1	N		
O-9003 HEQB		Dan Patterson	1	N	O-3 Scott	
E-9015 DOZ1 McLaughlin		Austin Waters	1	N		
E-9016 DOZ Dao		Howard Winn	1	N		
E-50 D7 PUMPER CAT Stanton		Darrel Stanton	1	N		
E-9039 EXCA Deyo		Trevor Deyo	1	N		
E-48 FEL1 Stanton			1	N		
E-9044 LOADER Stanton	7/28		1	N		
E-49 SKG1 Stanton			1	N		
E-57 SKG1 Miller Timber	7/28	Juan Zaragoza-Lara	2	N		
7. Control Operations						
<p><b>Group includes the Benton Face, Benton Ridge, North Fork Benton, Benton South, Benton Nob and Lovell Knob fires.</b>  <b>Task:</b> Scout the fires for potential fire suppression and values at risk protection opportunities. Gather accurate intel on personnel and equipment on scene.  <b>Purpose:</b> Prioritize fire suppression and values at risk. Prioritize protection efforts with limited resource availability.  <b>End State:</b> All fires have a viable fire suppression/values at risk protection plan.</p>						
8. Special Instructions						
<p>Utilize LCES.  Grandad Bridge and Captains Cabin road closures will be staffed by Clearwater Co. S.O. Deputies from 0600-1800 and 1800-0600.</p>						
9. Division/Group Communication Summary						
Function	Frequency - RX	Frequency - TX	Tone	Channel	Comments	
COMMAND 1	169.7550	167.1000	146.2	1		
CPTPA 2	153.0650	158.1600	97.4	5		
TAC 8	168.6000	168.6000	146.2	8		
BUTTE A/G	166.6125	166.6125		15		
Prepared by (RESL) Jody Pettit	Approved by (PSC2) Mike Rubenstein		Date	07/15/2021	Time	2000



ASSIGNMENT LIST		1. Branch	2		2. Division/Group	Butte Creek Fire Group	
3. Incident Name		4. Operational Period					
Cougar Rock Complex		Date: 07/16/2021		Time: 0600-2200			
5. Operations Personnel							
Operations Chief - Line/ Branch Director		Don Hammack, Manny Mendoza (t)		Group Supervisor		Mike West	
Operations Chief - Planning		Ron Naber		Air Branch Director		Sal Garcia	
6. Resources Assigned This Period							
Strike Team/Task Force/ Resource Designator	Last Shift	Leader	No. Pers.	Trans. Needed	Drop Off PT./Time	Pick Up PT./Time	
O-90 CRWB	7/29	Richard Finis	1	N			
C-12 HC2 Red Hots 1	7/29		20	N			
E-9043 DOZ4 Finky Logging			1	N			
E-9045 DOZ4 Snider	7/29		1	N			
E-9046 DOZ4 Snider	7/29		1	N			
E-9018 EXCA McLaughlin		Bruce McLaughlin	1	N			
E-9042 EXCA Teathered		Monte Walker	1	N			
E-9047 EXCA Stanton Logging	7/29		1	N			
E-55 FEB1 Kuykendall		Galen Kuykendall	1	N			
E-9040 FEB1		Zack Allen	1	N			
E-9019 GRDR Fink Logging		Dillon Anderson	1	N			
O-36 EMTF Idaho 06	7/27	Yoaila Kopelowitz	1	N			
O-44 EMTF Idaho 07	7/27	Misty Bauer	1	N			
O-1.38 MEDL	7/25	Gwen Coulture	1	N			
O-35 EMPF	7/27	Adam Osiadacz	1	N			
E-14 AMBU Best Practices 2	7/27	Frank Batten, Shyre Isham	2	N			
O-1.8 SOF2	7/23	Jim Freestone	1	N			
7. Control Operations							
<p><b>Task:</b> Build machine line from Kaufman Saddle to Thompson Creek. Build machine line from Kaufman Saddle to Thompson Point. Scout line from Bottle Creek to Kaufman Saddle. Open Butte Creek Road from Hansen Saddle to reservoir.</p> <p><b>Purpose:</b> Keep fire between Butte and Thompson Creeks and North of Kaufman Saddle.</p> <p><b>End State:</b> Limit fire growth and protect timber value.</p>							
8. Special Instructions							
<p>Utilize LCES.</p> <p>Watch out for logging traffic from Kaufman Saddle to highway 11.</p> <p>Grandad Bridge and Captains Cabin road closures will be staffed by Clearwater Co. S.O. Deputies from 0600-1800 and 1800-0600.</p>							
9. Division/Group Communication Summary							
Function	Frequency - RX	Frequency - TX	Tone	Channel	Comments		
COMMAND 1	169.7550	167.1000	146.2	1			
CPTA 2	153.0650	158.1600	97.4	5			
TAC 9	166.7250	166.7250	146.2	9			
BUTTE A/G	166.6125	166.6125		15			
Prepared by (RESL) Jody Pettit		Approved by (PSC2) Mike Rubenstein		Date 07/15/2021		Time 2000	

ASSIGNMENT LIST		1. Branch	2. Division/Group			
		2		FS Fire Group		
3. Incident Name		4. Operational Period				
Cougar Rock Complex		Date: 07/16/2021		Time: 0600-2200		
5. Operations Personnel						
Operations Chief - Line/ Branch Director	Don Hammack, Manny Mendoza (t)	Group Supervisor				
Operations Chief - Planning	Ron Naber	Air Branch Director	Sal Garcia			
6. Resources Assigned This Period						
Strike Team/Task Force/ Resource Designator	Last Shift	Leader	No. Pers.	Trans. Needed	Drop Off PT./Time	Pick Up PT./Time
C-9007 Rappelers	7/18		8	N		
E-1 ENG4 Hart Ventures		Wetzel	3	N	Butte Creek	
E-9023 ENG6		Tracy Prock	3	N		
E-13 ENG6 Alder Creek	7/24	Alberto Paz	3	N	Butte Creek	
E-19 WTS2 Richardson Tree Care	7/24	David Betz	1	N	Butte Creek	
E-9041 DOZ3			1	N		
O-36 EMTF Idaho 06	7/27	Yoaila Kopelowitz	1	N		
O-44 EMTF Idaho 07	7/27	Misty Bauer	1	N		
O-1.38 MEDL	7/25	Gwen Coulture	1	N		
O-35 EMPF	7/27	Adam Osiadacz	1	N		
E-14 AMBU Best Practices 2	7/27	Frank Batten, Shyre Isham	2	N		
O-1.8 SOF2	7/23	Jim Freestone	1	N		
7. Control Operations						
Group includes the Owl and Washington Creek fires.						
Task: Secure fire edge along FS Scofield Sourdough road working to the east and west of main fire. Continue to open roads T6050 and T6050A.						
Purpose: Keep fire south of FS Scofield Sourdough road and north of Sneak Creek.						
End State: The Owl fire has a viable fire suppression/values at risk protection plan.						
8. Special Instructions						
Owl fire has priority.						
Utilize LCES.						
Grandad Bridge and Captains Cabin road closures will be staffed by Clearwater Co. S.O. Deputies from 0600-1800 and 1800-0600.						
9. Division/Group Communication Summary						
Function	Frequency - RX	Frequency - TX	Tone	Channel	Comments	
COMMAND 3	171.9250	165.9875	146.2	3		
CPTPA 2	153.0650	158.1600	97.4	5		
TAC 10	166.7750	166.7750	146.2	10		
IDL A2GS	151.1450	151.1450		15		
Prepared by (RESL) Jody Pettit		Approved by (PSC2) Mike Rubenstein		Date 07/15/2021		Time 2000

Prepared By: Sal Garcia Prepared Date: 7/15/2021 Prepared Time: 2034

**AIR OPERATIONS SUMMARY**

<b>1. INCIDENT NAME:</b> Cougar Rock Complex	<b>2. OPS PERIOD DATE:</b> 7-16-2021	<b>START TIME:</b> 0600	<b>END TIME:</b> 2200	<b>SUNRISE:</b> 0505	<b>SUNSET:</b> 2035
<b>3. REMARKS:</b> (Safety Notes, Hazards, Air Operations, Special Equipment, etc.): Keep alert and be respectful to needs and issues of the changing environment  Watch - General aviation and be aware of reduced visibilities due to weather and smoke - <b>Think clear and provide for Safety</b>  Do to the number of fires within the Complex, please review the Communications Plan in the IAP - do to respective assignments, keep alert and prior to departing and or reassignment confirm frequencies and destination		<b>4. Medical:</b> Medevac/Extraction - Order through communications.  Refer to <u>Medical plan</u>		<b>5. TFR / NOTAM:</b> TFR - Cougar Rock No TFR were available at publication / Please refer to the Aviation Briefing / Helibase and Fix Wing Bases for the Check the "FAA graphical TFR Website"  Communications can be used, if needed can relay aviation needs  Refer to IAP Communications Plan	


6. PERSONNEL	NAME	PHONE #	7. FREQUENCIES	AM	FM	8. FIXED-WING Avail/ Type/ Make-Model/ N#/ Base
AOBD	Sal Garcia	760 310-0318	A/A TFR & Fixed Wing			Air Attack available from Grangeville
			A/A Rotor Wing - Disp	132.050		
			A/G - Primary	TX/RX TX/RX	Refer to Comm Plan	Retardant and Lead Plane upon request through Air Attack or Operations via AOBD
Order Helicopter(s)	And Fix wing, through	Air Ops/AOBD	Helibase		Command 1 169.7500	
			Line functions		Command 1	At present - orders for Helicopters and staffing has been placed
Currently holding 2	Type III helicopter from	CPTPA				N27HX -- contact AOBD for helicopter scheduling Recon, and or Sling operations
68H & 74H can be	Used on CPTPA lands	Not on FS / Fed				

**9. HELICOPTERS (Use Additional Sheets as Necessary)**

FAA N#	TY	MAKE/ MODEL	BASE	START	AVAIL	REMARKS	FAA N#	TY	MAKE/ MODEL	BASE	START	AVAIL	REMARKS
N27HX	III	B407	Orofino	0700	2000								
Air Operations Branch Director <i>[Signature]</i>													Date/Time
													7/15/2021

INCIDENT RADIO COMMUNICATIONS PLAN		Incident Name Cougar Rock Complex		Date/Time Prepared 7/15/2021 1930		Operational Period Date/Time 7/16/2021 0700 – 7/17/2021 0700			
Ch #	Function	Channel Name	Assignment	RX Freq N or W	RX Tone	TX Freq N or W	Tx Tone	Mod	Remarks
1	Repeater	Command 1	All Resources	169.7500 N		167.1000 N	146.2	A	To Communications
2	Repeater	Command 2	All Resources	173.9625 N		164.8625 N	146.2	A	To Communications
3	Repeater	Command 3	All Resources	171.9250 N		165.9875 N	146.2	A	To Communications
4									
5	Repeater	CPTA 2	I/A	153.0650 N	97.4	158.1600 N	97.4	A	ELK Butte/Grangeville Dispatch
6	Tactical	TAC 6	Hobbit	168.0500 N	146.2	168.0500 N	146.2	A	NIFC Tac
7	Tactical	TAC 7	Scott	168.2000 N	146.2	168.2000 N	146.2	A	NIFC Tac
8	Tactical	TAC 8	Benton	168.6000 N	146.2	168.6000 N	146.2	A	NIFC Tac
9	Tactical	TAC 9	Butte Creek	166.7250 N	146.2	166.7250 N	146.2	A	NIFC Tac
10	Tactical	TAC 10	FS Fire	166.7750 N	146.2	166.7750 N	146.2	A	NIFC Tac
11	Tactical	TAC 11	All Resources	168.2500 N	146.2	168.2500 N	146.2	A	NIFC Tac
12	<b>Tactical</b>	<b>ID EMS</b>	<b>All Resources</b>	<b>155.2800 N</b>		<b>155.2800 N</b>	<b>156.7</b>	<b>A</b>	<b>EMS AMBO/AIR UNITS</b>
13	Air/Ground	IDL A2GS	All Resources	151.1450 N		151.1450 N	100.0	A	Statewide Air/Guard
14	Air/Ground	Scott A/G	All Resources	166.6000 N		166.6000 N		A	NIFC A/G
15	Air/Ground	Butte A/G	All Resources	166.6125 N		166.6125 N		A	NIFC A/G
16	<b>Air Guard</b>	<b>Air Guard</b>	<b>All Resources</b>	<b>168.6250 N</b>		<b>168.6250 N</b>	<b>110.9</b>	<b>A</b>	<b>Emergency</b>

Prepared By (Communications Unit)

Thomas Robbins COML 

Incident Location

Orofino ID

The convention calls for frequency lists to show four digits after the decimal place, followed by either an "N" or a "W", depending on whether the frequency is narrow or wide band. Mode refers to either "A" or "D" indicating analog or digital (e.g. Project 25) or "M" indicating mixed mode. All channels are shown as if programmed in a control station, mobile or portable radio. Repeater and base stations must be programmed with the Rx and Tx reversed.

# HEALTH AND SAFETY MESSAGE

**SAFETY** starts with **YOU**

We are **ALL** accountable for **SAFE** behaviors

INCIDENT: **Cougar Rock Complex**

DATE: 07-16-2021

TIME: 0600-2200

## **SAFETY is all about YOU!!!**

- **Stay Hydrated**
- **Don't let minor injuries become major injuries.**
- **Get Sleep.**
- **Practice good Hygiene.**
- **Eat Well.**
- **Wear your PPE.**
- **Don't expose yourself to unnecessary risk.**

**It is early in the season take care of yourself and your fellow firefighters!!!**

## **Values at Risk?**

**When an Incident Management Team Takes over an incident we are told about the values at risk.**

- ✓ **Sometimes those values are structures.**
- ✓ **Sometimes they are power lines.**
- ✓ **Sometimes they are agriculture lands.**
- ✓ **Sometimes they are timber resources.**

**The true value at risk, on every incident is**  
**YOU!**

- ✓ **Structures can be rebuilt.**
- ✓ **Power lines can be restrung.**
- ✓ **Agriculture lands can be replanted.**
- ✓ **Trees will grow back.**

**It is not that those other values are not important, they are. They are just not as important as you are.**

**Do not take my word for it. Ask your mother, or father. Talk to your wife or husband. Ask your children or grandchildren. They will certainly tell you what the most important value at risk on this incident is and the next,**

## **YOU ARE!!!**

**If you get seriously injured or killed,  
You cannot be rebuilt, and you will not grow back.**

**Stay focused on your safety!!**

**Thanks, from your Safety Team!!**

Marvin Carpenter, Jim Freestone and  
Opie Blackwell



**6 Minutes for Safety**

**Serious Injury Procedures**

# MEDICAL PLAN (ICS 206 WF)

<b>1. Incident/Project Name</b>		<b>2. Operational Period</b>					
Cougar Rock Complex		Date/Time 7-16-21 0700-1900					
<b>3. Ambulance Services</b>							
Name	Complete Address	Phone & EMS Frequency		Advanced Life Support (ALS)			
				Yes	No		
Clearwater county ambulance	1195 Riverside ave, Orofino	911 208-476-3771		yes			
Best Practice Medicine	On site Boehls spike				no		
Best Practice Medicine	On site Headquarters				no		
Army corp of engineers	Boat rescue	208-716-0910 Paul Pence			no		
Sheriff	Boat rescue	911			no		
<b>4. Air Ambulance Services</b>							
Name	Phone	Type of Aircraft & Capability					
Life Flight Lewiston	911 or 800-232-0911	Night vision, ALS transport					
Two Bear Air	911 or 406-758-5585	Night vision, hoist, can transport to ground unit or private aeromed unit.					
<b>5. Hospitals</b>							
Name Complete Address	Lat: Long:	Travel Time (from ICP)		Phone	Helipad		Level of Care Facility
		Air	Ground		Yes	No	
Clearwater county Hospital 1195 riverside Ave Orofino			4 min	208-476-4555	X		Critical Access
St Josephs Regional Trauma Center Lewiston	Lat: N 46°25.016' Long: W 117°01.449'		57 min	208-743-2511	X		Level 2 trauma
Benewah community Hospital 229 south 7 <sup>th</sup> st St Maries	Lat: 47.3146° N Long: 116.5674°		129min	208-245-5551			Critical care access
Harborview Burn Center 395 9 <sup>th</sup> ave Seattle	Lat: 47.6039° N Long: 122.3241° W		346min	206-520-5000	X		Level 1 trauma center
<b>Special Notes</b>							
The Medical unit will be open from 0600-2200. After hours contact the incident ambulance and the MEDL in case of an emergency in camp or on the line.							
<b>6. Division</b>		<b>Area Location Capability</b>					
<b>Branch 1 Boehl's</b>		<b>EMS Responders &amp; Capability:</b>		Cody Brandt EMTF (medic3) Adam Osiadacz EMPF (medic 4)			
		<b>Equipment Available on Scene:</b>		ALS & BIS , sked kit, 1 <sup>st</sup> aid support kit, O2 AED			
		<b>Medical Emergency Channel:</b>					
		<b>ETA for Ambulance to Scene:</b>		60 minutes			
		<b>Air/Ground:</b>					
		<b>Approved Helispots:</b>		Boehls spike			



# MEDICAL PLAN (ICS 206 WF)

<b>Branch 2 Headquarters</b>	<b>EMS Responders &amp; Capability:</b>	Gwen Couture MEDL Misty Bauer EMTF (medic 1) Yoaila Kopelowitz EMTF (medic2)
	<b>Equipment Available on Scene:</b>	AED, BLS line gear, sked, O2 AED
	<b>ETA for Ambulance to Scene:</b>	Ambo 2 on scenem
	<b>Approved Helispot:</b>	
	<b>Lat:</b>	+46° 37.80072159'
	<b>Long:</b>	-115° 48.52494863'
<b>ICP Orofino</b>	<b>EMS responders and capability</b>	Teri Miller EMPT
	<b>Equipment Available on Scene:</b>	ALS AED SPINAL IMOBILIZATION
	<b>Medical Emergency Channel:</b>	
	<b>ETA for Ambulance to Scene:</b>	4 MIN
<b>1. Prepared by (Medical Unit Leader)</b>	<b>Date/Time</b>	<b>2. Reviewed By (Safety Officer)</b>
Teri Miller 406-544-3070 <i>Teri Miller</i>	07/15/21 1900	Marvin Carpenter 07/15/21 1900 <i>Marvin Carpenter</i>

## ASSIGNMENT-SPECIFIC MEDICAL EMERGENCY ACTION PLAN

### Pre-Planning for today's assignment

What are the likely hazards that could cause injuries? What kind of severe injuries?		
Who is the likely in-charge DIVS or overhead for an emergency in your assigned area today? (i.e. "Division Zulu")		
Who are the Medical personnel assigned to your part of the incident? What are their capabilities?		
Other Emergency Responders: fire dept., crash rescue, ambulance?		
Communications: Command channel, Air to Ground, Medical helicopters, local rescue/medical?		
Transportation methods available	Ground vehicle, drop point, coordinates, travel route?	
	Aircraft I.D, Helispot names, coordinates? Hoist capable, internal transport	
	Other available methods - contingency	
Most likely workforce for evacuation		

### Response checklist

#### **Who takes charge?**

- DIVS or designated Overhead manages the overall scene and evacuation process.
- Medical personnel and emergency responders manage patients and assist in rescue/extrication.
- OPS and IC make command decisions so the emergency can be given full attention and management. They continue to manage ongoing incident operations.

#### **Response sequence:**

- First, secure the scene and protect responders and patients from further injury. Render first aid.
- Clear the Command channel for "Emergency Traffic only" if this is a critical emergency. If not, inform Communications of non-critical-emergency status and use normal communications.
- Contact closest Medical personnel and DIVS or designated Overhead for response.

**Information for Communications:** Medical Incident Report – See last page of IAP and IRPG pages 118 and 119.

**Helicopter Extracation Operations:** See IRPG pages 116 and 117.

**Severe Weather:** In the event of forecasted severe weather, implement Incident Severe Weather Plan.

**Incident Within Incident:** Upon arriving at the incident, all overhead should obtain and review the team's Incident Within Incident Plan.

## Incident within Incident (IWI) Plan

### Immediate response:

- Secure the site to prevent further injury to victims and responders.
- Render first aid using crew and line EMT's and nearby forces.
- Designate a Point of Contact at the scene. Notify communications who this is and when it changes.
- Notify Communications and Medical Unit. Identify whether this is a life threatening emergency or less serious injury.
- Communications requests "Emergency Traffic" to clear channel if it is a life threatening emergency.
- Transmit critical information from the scene to Communications: Type and extent of injury; Airway or breathing problems; serious bleeding; EMT present or needed; ALS needed. Give specific location of victim: Lat/Long; ground or air access; DP#; Helispot or helicopter medevac site. Do not use victim or crew names in any communications. Use the Medical Incident Report, pages 118 and 119 of the Incident Response Pocket Guide (IRPG) as a checklist.
- Request appropriate Medical Unit, incident resource and local 9-1-1 EMS response.
- Designate an Incident Within Incident Commander (IWIC). DIVS is normally in charge. Other Operations persons may be in charge until relieved. Notify communications who this is and when it changes.
- Communications: If requested, notify Local 9-1-1 EMS and other responders right away. Provide staging information, medical evacuation location(s), IWIC, medical contact information and communication protocol. Post Medical Incident Report at Communications desk to facilitate sharing critical information.
- Medical Unit Leader should assist the IWIC in coordinating any Local EMS, incident medical, and transportation response.
- Communications notifies DIVS, Line OPS and SOF2 to respond to the scene.
- In the event we are shadowing another team, provide whatever assistance we can to help them with the situation.

### Aviation Mishap:

For an aviation accident within the fire area, the standard Incident within Incident protocols will be followed.

For an aviation accident outside of the fire area, the following procedure will be followed in addition to the Incident within an Incident Protocols.:

If an aviation accident is suspected or reported, Helibase will dispatch Air Attack to the location to assess the scene. If no Air Attack is available than the closest aviation resource will be dispatched. Helibase will then make a determination on the most appropriate helicopter available to respond for rescue considering time, capabilities, access, etc. Once on scene the helitack on site will designate a POC to be in charge of the situation until relieved. Once these resources are on scene and communication is established the Incident within an Incident protocols remain the same.

# **FINANCE**

**The following resources please  
call finance at 208-820-4661:**

**Solomon Fire**

**SGS**

**Northwest Fire**

**IFM**

**Steinbruecker**

**Dan Patterson**

**Leslie Blackwell**

**Matt Hajos**

**St Joe/IDL Module**

**Roman Vega (Mammoth Mod)**

**Redding Jumpers**

**Eric Berard**

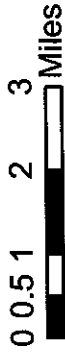
**Zander Asher**

**Ben Wagner**

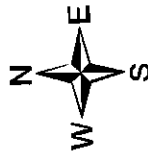
# IAP-Branch 1

Cougar Rock Complex  
IDCTS-000623  
July 16, 2021

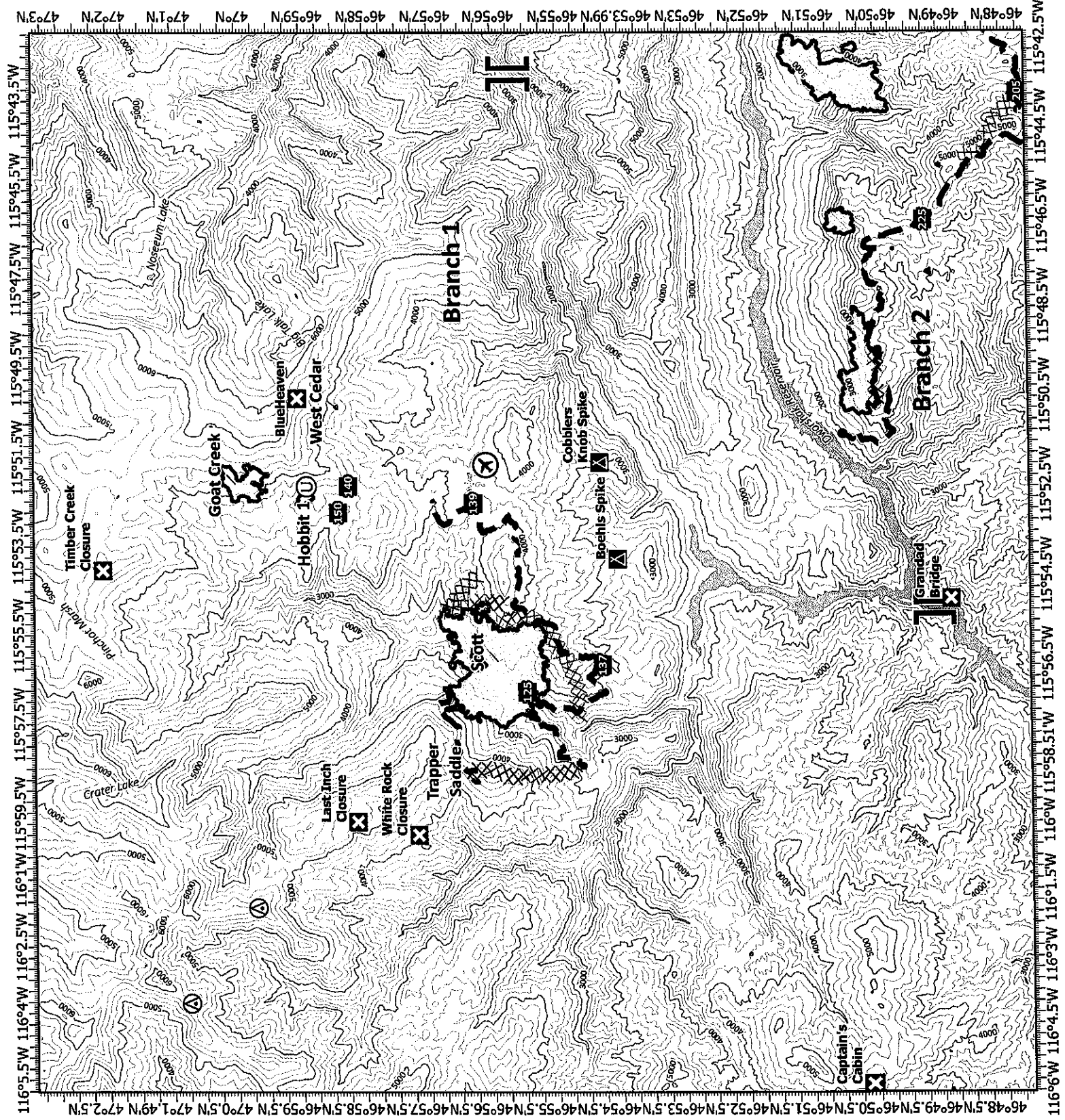
3,660 acres at 22:30, 07/14/2021



- Wildfire Daily Fire Perimeter
- Completed Dozer Line
- Planned Dozer Line
- Planned Road as Line
- Planned Secondary Line
- Aerial Hazard
- Airstrip or Airport
- Unimproved Landing Area
- Branch Break
- Drop Point
- Closure
- Camp



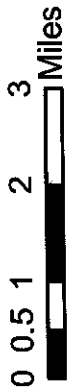
S. Tripp  
7/15/2021 17:39  
North American 1983 Datum.



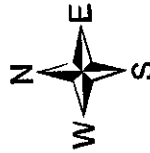
# IAP-Branch 2

Cougar Rock Complex  
IDCTS-000623  
July 16, 2021

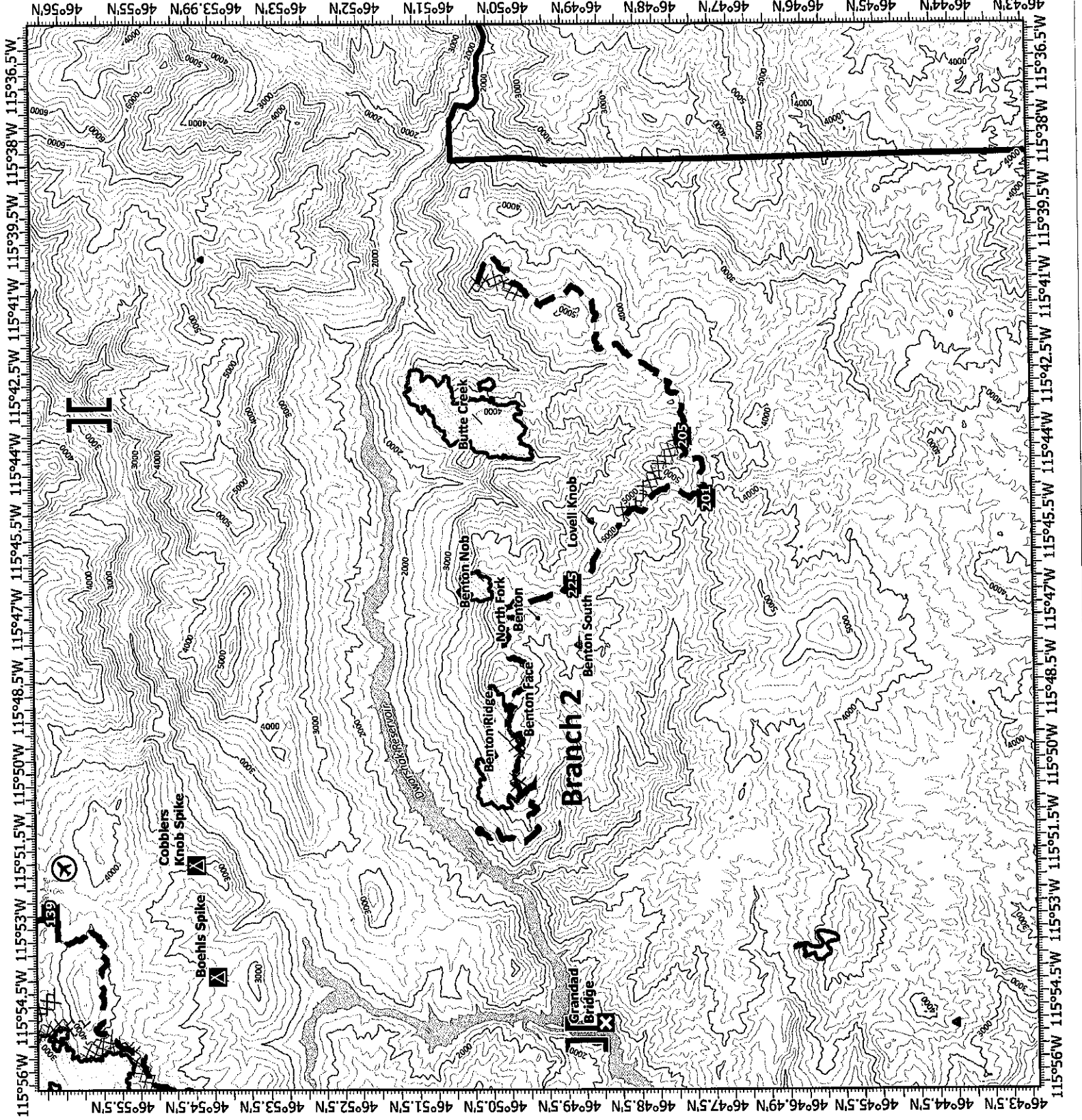
3,660 acres at 22:30, 07/14/2021



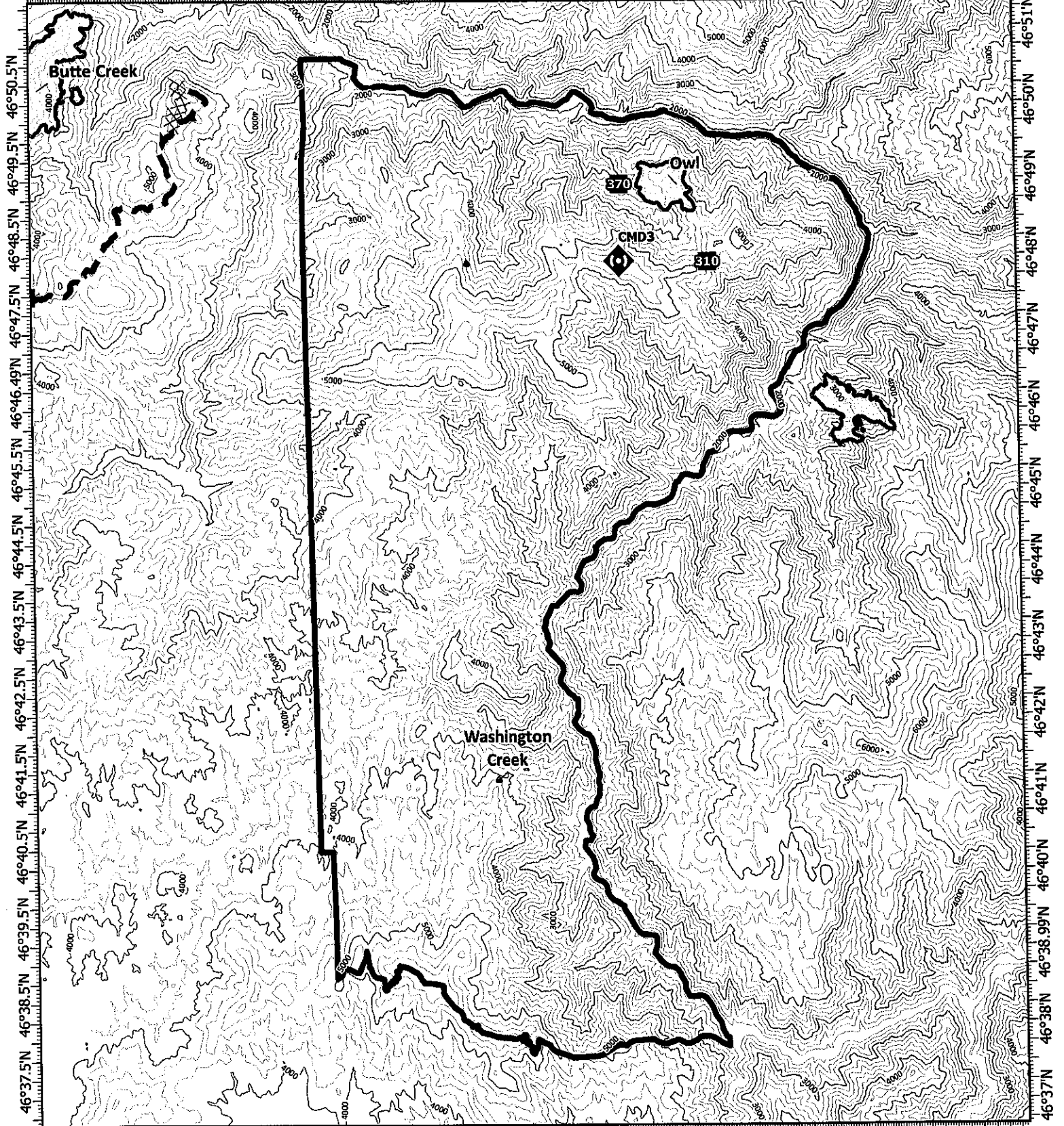
- Wildfire Daily Fire Perimeter
- USFS IA
- Completed Dozer Line
- Planned Dozer Line
- Planned Road as Line
- Planned Secondary Line
- Airstrip or Airport
- Branch Break
- Drop Point
- Closure
- Camp



S. Tripp  
7/15/2021 1741  
North American 1983 Datum.



15°43.51'W 115°42'W 115°40.5'W 115°39'W 115°37.5'W 115°36.01'W 115°34'W 115°32.5'W 115°31'W 115°29.5'W 115°28'W 115°26.5'W 115°25'W



46°37.5'N 46°38.5'N 46°39.5'N 46°40.5'N 46°41.5'N 46°42.5'N 46°43.5'N 46°44.5'N 46°45.5'N 46°46.49'N 46°47.5'N 46°48.5'N 46°49.5'N 46°50.5'N 46°51'N

**IAP-Branch 2 IA**  
Cougar Rock Complex  
IDCTS-000623  
July 16, 2021  
3,660 acres at 22:30, 07/14/2021

- Wildfire Daily Fire Perimeter
- USFS IA
- Planned Dozer Line
- Planned Road as Line
- Drop Point
- Repeater



0 0.5 1 2 Miles



S. Tripp  
7/15/2021 1744  
North American 1983 Datum





# MEDICAL PLAN (ICS 206 WF)

Controlled Unclassified Information//Basic

## Medical Incident Report

**FOR A NON-EMERGENCY INCIDENT, WORK THROUGH CHAIN OF COMMAND TO REPORT AND TRANSPORT INJURED PERSONNEL AS NECESSARY.**

**FOR A MEDICAL EMERGENCY: IDENTIFY ON SCENE INCIDENT COMMANDER BY NAME AND POSITION AND ANNOUNCE "MEDICAL EMERGENCY" TO INITIATE RESPONSE FROM IMT COMMUNICATIONS/DISPATCH.**

**Use the following items to communicate situation to communications/dispatch.**

**1. CONTACT COMMUNICATIONS / DISPATCH (Verify correct frequency prior to starting report)**

*Ex: "Communications, Div. Alpha. Stand-by for Emergency Traffic."*

**2. INCIDENT STATUS: Provide incident summary (including number of patients) and command structure.**

*Ex: "Communications, I have a Red priority patient, unconscious, struck by a falling tree. Requesting air ambulance to Forest Road 1 at (Lat./Long.) This will be the Trout Meadow Medical, IC is TFLD Jones. EMT Smith is providing medical care."*

Severity of Emergency / Transport Priority	<input type="checkbox"/> <b>RED / PRIORITY 1 Life or limb threatening injury or illness. Evacuation need is IMMEDIATE</b> <i>Ex: Unconscious, difficulty breathing, bleeding severely, 2<sup>nd</sup> - 3<sup>rd</sup> burns more than 4 palm sizes, heat stroke, disoriented.</i> <input type="checkbox"/> <b>YELLOW / PRIORITY 2 Serious injury or illness. Evacuation may be DELAYED if necessary.</b> <i>Ex: Significant trauma, unable to walk, 2<sup>nd</sup> - 3<sup>rd</sup> burns not more than 1-3 palm sizes.</i> <input type="checkbox"/> <b>GREEN / PRIORITY 3 Minor injury or illness. Non-Emergency transport</b> <i>Ex: Sprains, strains, minor heat-related illness.</i>	
Nature of Injury or Illness & Mechanism of Injury		Brief Summary of Injury or Illness <i>(Ex: Unconscious, Struck by Falling Tree)</i>
Transport Request		Air Ambulance / Short Haul/Hoist Ground Ambulance / Other
Patient Location		Descriptive Location & Lat. / Long. (WGS84)
Incident Name		Geographic Name + "Medical" <i>(Ex: Trout Meadow Medical)</i>
On-Scene Incident Commander		Name of on-scene IC of Incident within an Incident <i>(Ex: TFLD Jones)</i>
Patient Care		Name of Care Provider <i>(Ex: EMT Smith)</i>

**3. INITIAL PATIENT ASSESSMENT: Complete this section for each patient as applicable (start with the most severe patient)**

Patient Assessment: See IRPG page 106

Treatment:

**4. TRANSPORT PLAN:**

Evacuation Location (if different): (Descriptive Location (drop point, intersection, etc.) or Lat. / Long.) Patient's ETA to Evacuation Location:

Helispot / Extraction Site Size and Hazards:

**5. ADDITIONAL RESOURCES / EQUIPMENT NEEDS:**

*Example: Paramedic/EMT, Crews, Immobilization Devices, AED, Oxygen, Trauma Bag, IV/Fluid(s), Splints, Rope rescue, Wheeled litter, HAZMAT, Extrication*

**6. COMMUNICATIONS: Identify State Air/Ground EMS Frequencies and Hospital Contacts as applicable**

Function	Channel Name/Number	Receive (RX)	Tone/NAC *	Transmit (TX)	Tone/NAC *
COMMAND					
AIR-TO-GRND					
TACTICAL					

**7. CONTINGENCY: Considerations: If primary options fail, what actions can be implemented in conjunction with primary evacuation method? Be thinking ahead.**

**8. ADDITIONAL INFORMATION: Updates/Changes, etc.**

**REMEMBER: Confirm ETA's of resources ordered. Act according to your level of training. Be Alert. Keep Calm. Think Clearly. Act Decisively.**