

# Cougar Rock Complex

ID-CTS-000623

PNN5HF (1522)



## Incident Action Plan

Monday

July 26, 2021

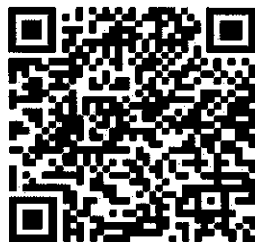
Operational Period 0600 - 2200

*Virtual Check-In*

*Got Maps? IAP?*

*Got Time?*

*COVID-19 self test*



*Fire information [2021.cougarrock@firenet.gov](mailto:2021.cougarrock@firenet.gov) or 208-494-1943*

# INCIDENT OBJECTIVES

1. Incident Name  
Cougar Rock Complex

2. Date Prepared  
07/25/2021

3. Time Prepared  
1900

## 4. Objectives

### High Value Assets and Resources to be Protected:

- Private properties, infrastructure and timber resources.
- Habitat reparation and watershed, cultural, historic, and heritage sites.
- Waterways and riparian areas.

### Leader's Intent:

- Protect human life. Firefighter and public safety will be given the highest priority at all times. Risks to firefighters and the public will be managed by utilizing a risk-based approach to decision making. An emphasis will be placed on exposure to accidents and heat related illness.
- Minimize the exposure of the public and responders to transmission or infection from COVID-19 by following agency guidance and established CDC, local, state and national guidance to ensure a healthy work environment.
- Communicate proactively with agency staffs, cooperators, permittees and stakeholders, including PotlachDeltic, Idaho Department of Lands, United States Army Corps of Engineers, United States Forest Service, the Nez Perce Tribe, and the Clearwater County Sheriff, Emergency Management Coordinator and County Commissioners, through effective and timely dialogues, meetings and comprehensive information sharing for purposes to include public safety, evacuations, traffic control, road closures, structure protection and any other safety risk to public and industrial operators.
- Inform the Agency Administrator and Association Line Officer of any public meetings and media contacts and coordinate with the Clearwater IDL and CTPA to ensure that we build on existing relationships, contacts and key messages.
- Utilize appropriate fire strategies to minimize fire impacts to residences, commercial properties, critical community infrastructure and natural resources, and critical watersheds.
- Implement appropriate measures to limit the spread of noxious weeds, including washing all vehicles and equipment upon arrival at the incident and departure from the incident.
- Work with agency staff and cooperators to assess wildfire effects to infrastructure and watersheds and develop and implement short-term actions to address high-risk watershed impacts.
- Commit incident resources only where there is a high probability of meeting reasonable objectives or when the risk of injury or death can be mitigated.
- Follow and adhere to the 10 standard orders. Continually evaluate the 18 watch out situations through clear concise direction and understanding of assignments and necessary mitigations.
- Maintain and foster relationships with users of public lands, landowners, agencies and local communities.
- Maintain the highest degree of professionalism on the incident and within local communities.
- Adhere to applicable work-rest guidelines to reduce fatigue and ensure that assigned fire-fighting personnel receive adequate rest.
- Maintain a workplace and atmosphere of mutual respect and free of any harassment. There will be no tolerance for any unethical, illegal drug or alcohol related incidents.
- Effectively manage costs commensurate with the high value assets and resources to be protected and risks.
- Efficiently demobilize resources in a manner that will ensure safe travel and "right-sizing" consistent with demobilization glidepath direction.

### Operational Objectives:

- Scout for and prioritize potential fire suppression and values at risk protection opportunities.
- Gather intelligence on personnel and equipment on the incident.
- Engage in fire suppression and/or values at risk protection actions and/or point protection when safe to do so with available resources.
- Respond as appropriate to, and commensurate with the prioritization of, new/emerging incidents.
- Act with appropriate prioritization if presented with the opportunity to rehabilitate resource damage caused by suppression actions.

5. Prepared By (Planning Section Chief)  
Mike Rubenstein: 

6. Approved By (Incident Commander)  


ORGANIZATION ASSIGNMENT LIST		9. Operations Section	
1. Incident Name	Cougar Rock Complex	Branch 1 Chief-Line	Joe Brabender
2. Date	7/25/2021 3. Time 2000	Branch 2 Chief-Line	Don Hammack
4. Operational Period	7/26/2021 0600-2200	Chief-Planning	Ron Naber
5. Incident Commander and Staff		a. Branch I - Division/Groups	
Incident Commander	Jay Winfield, Paul Roose (t),	Branch Director	Joe Brabender
Deputy		Deputy	
Safety Officer	Marvin Carpenter, Steve Wyatt, Opie Blackwell	Division/Group	Hobbit Fire Group Danny Lemer, Paul Wagner (t)
Information Officer	Jill Cobb, Philip Sneed, Joe Holzinger (t)	Division/Group	Scott Fire Group Danny Lemer, Dave Gregory (t)
Liaison Officer	Chris Grove	Division/Group	
6. Agency Representative		Division/Group	
Agency	Name	Division/Group	
CPTA	Kane Steinbrueker	b. Branch II - Division/Groups	
PotlatchDeltic	Rich McMillan	Branch Director	Don Hammack
IDL	Dean Johnson	Deputy	
Clearwater Co. Sheriff	Chris Goetz	Division/Group	Benton Fire Group RJ Hannah
Army Corps. of Engineers	Paul Pencil	Division/Group	Butte Fire Group Manny Mendoza
USFS - NCF	Andrew Skowland	Division/Group	
USFS - IPNF	Matt Davis	Division/Group	
Nez Perce Tribe Liaison	Christy Bradbury	Division/Group	
		c. Branch III - Division/Groups	
		Branch Director	
		Deputy	
7. Planning Section		Division/Group	
Chief	Will Bernard	Division/Group	
Deputy	Mike Rubenstein	Division/Group	
Resource Unit	Jody Pettit, Stacey Clemenson (t)	Division/Group	
Demobilization Unit	John Noneman (t)	Division/Group	
Documentation Unit	Jan Fleming	d. Air Operations Branch	
Situation Unit	Roger Jackson	Air Ops Branch Director	
GISS	Connell	Air Attack Supervisor	
Fire Behavior	Eric Trimble, Nate Lancaster	Air Attack Supervisor	
IT Support	Ed Yeager, Bryce Nordgren, Dominic Rogers (t)	Helicopter Coordinator	
Check-In		Helibase Manager	Ruben Griego (t)
8. Logistics Section		10. Finance Section	
Chief	Tyler Rae	Chief	Bertalee Mottern, Teresa Crow
Facilities Unit	Ken Haberl	Time Unit	Annette Hoyer
Supply Unit	Bryan Connelley, Perry Stebbins	Equipment Unit	Lisa Hawdon
Ordering Unit		Personal Time	Mary Dykstra (v), Nolan Baldwin (t)
Ground Support Unit		Cost Unit	Lisa Dickinson (t)
Comm Unit	Thomas Robbins	Comp Claims	
Medical Unit	Teri Miller	IBA	Wendy Walker
Security Unit			
Food Unit	Mike Oxborrow	Prepared by Jody Pettit (Resource Unit Leader)	

## Fire Weather Forecast

FORECAST NO: 17  
PREDICTION FOR: Day SHIFT  
SHIFT DATE: Monday, 07-26-2021

NAME OF FIRE: Cougar Rock Complex  
UNIT: CPTPA  
SIGNED: Eric Trimble/Nathan Lancaster, FBAN

TIME AND DATE  
FORECAST ISSUED: 1900 7/25/2021

---

**WEATHER DISCUSSION:** For Cougar Rock Complex (Hobbit 1, Scott, Trapper Saddle, Goat Creek)

Above normal temperatures are expected through the upcoming week, especially Friday and Saturday with hot and unstable conditions. An increasing chance of monsoon moisture Monday afternoon through Wednesday will bring increased cloud cover, higher RH's, and a slight chance of rain showers.

**Today Monday, July 26:**

**WEATHER:** Partly sunny. Smoke. Slight chance of showers by afternoon.

**TEMPERATURES:** Fire: 84 to 88°F

**HUMIDITY:** Fire: 18 to 22%

**WINDS (20ft):** Southwest 3-5 mph becoming west 4-8 mph w/gusts to 15 mph by afternoon.

**HAINES INDEX:** 4 Low      **LAL:** 1      **CWR:** 0%

---

**WEATHER DISCUSSION:** For Cougar Rock Complex (Butte Creek, Benton Ridge Fires, Lovell Knob)

Hot and dry conditions will continue early this week. Winds will be light and diurnally driven. Overnight Rh recovery will also be poor. An increase in cloud cover and smoke will likely keep high temperatures from reaching their full potential but it will still be hot. A few sprinkles will be possible Monday night into Tuesday.

**Today Monday, July 26:**

**WEATHER:** Increasing clouds becoming mostly cloudy by afternoon. Smoke.

**TEMPERATURES:** Fire: 88 to 93°F

**HUMIDITY:** Fire: 14 to 19%

**WINDS (20ft):** Variable 1-3 mph becoming upslope 3-5 mph by afternoon.

**HAINES INDEX:** 4 Low      **LAL:** 1      **CWR:** 0%

---

**EXTENDED FORECAST: Tuesday – Saturday**

Tuesday..... Mostly Cloudy. A few showers possible. Lows 60's; Highs 80's; Max RH 40%; Min RH 20%; Winds SW 5 mph; Haines 3  
Wednesday.... Partly Cloudy. Smoke. Lows 60's; Highs 80's. Winds NW 10-15 mph.  
Thursday ..... Partly Cloudy. Smoke. Lows 60's; Highs 80's. Winds NW 10-15 mph.  
Friday..... Partly Cloudy. Lows 60's; Highs 90's. Winds North 5-10 mph.  
Saturday..... Partly Cloudy. Smoke. Lows 60's; Highs 90's.

---

## FIRE BEHAVIOR FORECAST

<b>FORECAST NUMBER:</b> 17	<b>INCIDENT TYPE:</b> Wildfire
<b>FIRE NAME:</b> Cougar Rock Complex	<b>OPERATIONAL PERIOD:</b> July 26, 2021 Monday
<b>DATE ISSUED:</b> July 25, 2021	<b>TIME ISSUED:</b> 1800
<b>UNIT:</b> ID-CPTPA	<b>PREPARED BY:</b> Eric Trimble/Nate Lancaster – FBAN

### INPUTS

#### **WEATHER SUMMARY:**

**Sky Weather:** Partly Sunny, **CWR:** 0%, **Temps:** 85 to 90°, **RH:** 15 to 20%, **Haines:** 4 Low; **LAL:** 1  
**Winds (20 ft):** Southwest to west 3 to 5 mph w/gusts to 15 mph by afternoon.

#### **FUELS: Cougar Rock Complex- 11 fires**

Mixed conifer forest dominated by Western Red Cedar, Douglas Fir, Western Larch, and Grand Fir. Subalpine Alpine Fir, Engelmann Spruce and Lodge Pole Pine at the higher elevations (>4,800'). All age and size classes of conifer fuels with relatively high crown bulk density and low crown base heights. Light to moderate amounts of dead fine fuels and logging/thinning slash will contribute to surface fire spread. Herbaceous and live woody fuels are green and will generally not contribute to fire spread.

**Fine Fuels:** 2-5%; 10-hr: 8%; 100hr: 9%; 1000hr: 12%

**ERC:** >97<sup>th</sup> percentile.      **Max spotting distance:** 0.2 Mile

### OUTPUTS - FIRE BEHAVIOR

#### **General:**

Expect active surface and ground fire. Single to small group tree torching/short range spotting in unburnt areas within the fire and areas of unsecured line. Live fuels and young conifer plantations should discourage crown fire activity. Except in the SAF/ES stands (i.e. Goat Fire) fire activity should remain on the ground under dense canopies and sheltered sites. Fire primarily moving in activity fuels/slash and jackpots of dead/down/litter. Both on and off-site smoke will dampen fire activity.

Backing/flanking spread 2-3 ft/min with flames 2-3 ft. Head fire with possible 5-7 ft. flame lengths and 8-10 ft/min rates of spread on the steeper sites, higher with torching and when slope and wind align.

#### **Specific:**

**Benton Fires:** Continued movement to the N/NW toward the Reservoir.

**Butte Creek:** Continued fire growth to the E/NE of Thompson Point and towards the Reservoir.

**Goat Creek:** Sub-alpine fir will continue to promote fire spread thru single tree and group tree torching in most directions. Predominant spread direction S/SE.

**Probability of Ignition (PIG):** 82 - 87% during the peak of the burning period.

**AIR OPERATIONS:** If the inversion lifts it should occur between 1400 and 1530.

**SAFETY:** Heads up for snags and weakened green trees.

ASSIGNMENT LIST		1. Branch	2. Division/Group			
3. Incident Name Cougar Rock Complex		1		Hobbit Fire Group		
		4. Operational Period Date: 07/26/2021		Time: 0600-2200		
5. Operations Personnel						
Operations Chief – Line/ Branch Director	Joe Brabender		Group Supervisor	Danny Lemer, Paul Wagner (t)		
Operations Chief - Planning	Ron Naber		Air Branch Director			
6. Resources Assigned This Period						
Strike Team/Task Force/ Resource Designator	Last Shift	Leader	No. Pers.	Trans. Needed	Fire Info	Glidepath info
C-5 HC2 Franco Reforestation	8/10	Jose Mendoza	20	N		R&R 7/28+7/29
O-43 FAL1 Scholl Fallers	8/09	James Demastus	1	N		R&R 7/25+7/26
O-9994 FAL1	8/09	Mike Langston	1	N	O-1 Hobbit	R&R 7/24+7/25+7/26
E-114 ENG6 Returning Heros 964	8/04	G. Cordova, F. Medina (t)	8	N		
E-18 WTS2 Swanson Logging	8/06	Derrick Winslow	1	N		
O-35 EMPF Medic 4	8/04	Adam Osiadacz	1	N		
O-46 EMTF EMT 3	8/03	Cody Brandt	1	N		
E-13 AMBU Best Practices 1	7/28	B Quinland, R Barron	2	N		
O-15 SOF2	7/26	Opie Blackwell	1	N		
7. Control Operations						
Group includes Hobbit, Goat Creek, Trapper Saddle and West Cedar fires.						
Task: Continue to secure Hobbit fire perimeter. Monitor sprinkler line from 457 road down to Hobbit fire. Monitor sprinklers above My Blue Heaven cabin. Utilize air resources as appropriate.						
Purpose: Provide protection for My Blue Heaven cabin. Slow fire progression toward My Blue Heaven cabin.						
End State: Hobbit fire and Goat Creek fire have a viable fire suppression/value at risk protection plan.						
8. Special Instructions						
Utilize LCES. Logistic orders to Group Supervisor by 1000 for next shift. Consolidate trash for back haul. Disengage from cedar snag areas when winds are 5 mph or greater. Grandad Bridge and Captains Cabin road closures will be staffed by Clearwater Co. S.O. Deputies as anticipated traffic flow requires.						
9. Division/Group Communication Summary						
Function	Frequency - RX	Frequency - TX	Tone	Channel	Comments	
COMMAND 1	169.7550	167.1000	146.2	1		
CPTPA 2	153.0650	158.1600	97.4	5		
TAC 6	168.0500	168.0500	146.2	6		
A/G	166.6125	166.6125		15		
Prepared by (RESL) Stacey Clemenson (t)		Approved by (PSC2) Mike Rubenstein		Date 07/25/2021		Time 2000

ASSIGNMENT LIST		1. Branch	2. Division/Group			
		1	Scott Fire Group – Page 1 of 3			
3. Incident Name		4. Operational Period				
Cougar Rock Complex		Date: 07/26/2021		Time: 0600-2200		
5. Operations Personnel						
Operations Chief – Line/ Branch Director		Joe Brabender	Group Supervisor		Danny Lemer Dave Gregory (t)	
Operations Chief - Planning		Ron Naber	Air Branch Director			
6. Resources Assigned This Period						
Strike Team/Task Force/ Resource Designator	Last Shift	Leader	No. Pers.	Trans. Needed	Fire Info	Glidepath Info
C-9003 HC1 Elk Mountain	7/29	Remundo Reyes	19	N		
C-9004 HC1 Saw Tooth	7/31	Kyle West	20	Y		
O-18 Module IA-IDL-321	7/31	Allie Rauch	4	N		Crew swap
C-9001 Module SJS Timber	7/31	Jeremy Shawver	6	N	O-9 Scott	Crew swap
E-9003 ENG4 CT	7/31	Cameron Gehrman	2	N	O-8 Scott	Crew swap
E-11 ENG6 Cahoon	?	Randy Muttson	3	N	Butte Creek	
E-36 WTS2 L&S	8/03	Tolan Alexander	1	N		
E-111 WTS2 Lowery	8/06		1	N		
WAT2 Northwest Trucking						
E-109 WTS3 Ray Day Logging	7/31	Russ Wessman	1	N		
E-40 DOZ2 Ray Day Logging	?	Joe Montomba	1	N		
E-9001 DOZ2, E-41 LOWB Ray Day	?	Aaron Workman	1	N		
E-35 DOZ3 L&S	8/03	Will House	1	N		
E-52 DOZ3 Kuykendall	?	Montie Walker	1	N		
E-37 DUMP L&S						
E-79 DUMP Fury Concrete	7/31	Jason Miller	1	N		
E-80 DUMP Quality						
E-81 DUMP NW Trucking						
E-82 DUMP Pine Creek Logging	7/31	Monte Anderson	1	N		
E-9 EXCA Quality Excavation	7/25	Doug Johnson	1	N		
E-38 EXCA L&S, E-37 L&S LOWB	8/02	Amanda Hammond	2	N		
7. Control Operations						
Task: Black-line when conditions permit. Continue to mop-up black line edges. Utilize air resources when appropriate.						
Purpose: Reduce the loss of high value timber.						
End State: The Scott fire has a viable fire suppression/values at risk protection plan.						
8. Special Instructions						
Utilize LCES. Safely establish containment lines.						
Grandad Bridge and Captains Cabin road closures will be staffed by Clearwater Co. S.O. Deputies as anticipated traffic flow requires.						
9. Division/Group Communication Summary						
Function	Frequency - RX	Frequency - TX	Tone	Channel	Comments	
COMMAND 1	169.7550	167.1000	146.2	1		
CPTPA 2	153.0650	158.1600	97.4	5		
TAC 7	168.2000	168.2000	146.2	7		
A/G Branch 1	166.6125	166.6125		15		
Prepared by (RESL) Stacey Clemenson (t)		Approved by (PSC2) Mike Rubenstein		Date 07/25/2021	Time 2000	

ASSIGNMENT LIST		1. Branch	2. Division/Group			
		1	Scott Fire Group – Page 2 of 3			
3. Incident Name		4. Operational Period				
Cougar Rock Complex		Date: 07/26/2021		Time: 0600-2200		
5. Operations Personnel						
Operations Chief – Line/ Branch Director		Joe Brabender	Group Supervisor		Danny Lemer Dave Gregory (t)	
Operations Chief - Planning		Ron Naber	Air Branch Director			
6. Resources Assigned This Period						
Strike Team/Task Force/ Resource Designator	Last Shift	Leader	No. Pers.	Trans. Needed	Fire Info	Glidepath Info
E-39 FEL1 Ray Day Logging	?	Joe Workman	1	N		
E-9050 FEL1 Schilling	7/31	Steve Schilling	1	N		
E-120 LDFR Pine Creek Logging	8/03	Jim Fuller	1	N	Prev. E-9052	
E-9053 LDFR Lowery	8/02	Carl	1	N		
E-9054 LDFR Quality Excav	8/03	Zach Krueger	1	N		
E-85 LOWB Lowry	7/27	Karl Nygad	1	N		
E-96 SKIG Caldbeck	8/07	Steve Cox	1	N		
O-35 EMPF Medic 4	8/04	Adam Osiadacz	1	N		
O-46 EMTF EMT 3	8/03	Cody Brandt	1	N		
E-13 AMBU Best Practices 1	7/28	B Quinland, R Barron	2	N		
O-15 SOF2	7/26	Opie Blackwell	1	N		
7. Control Operations						
Task: Black-line when conditions permit. Continue to mop-up black line edges. Utilize air resources when appropriate.						
Purpose: Reduce the loss of high value timber.						
End State: The Scott fire has a viable fire suppression/values at risk protection plan.						
8. Special Instructions						
Utilize LCES.						
Safely establish containment lines.						
Grandad Bridge and Captains Cabin road closures will be staffed by Clearwater Co. S.O. Deputies as anticipated traffic flow requires.						
9. Division/Group Communication Summary						
Function	Frequency - RX	Frequency - TX	Tone	Channel	Comments	
COMMAND 1	169.7550	167.1000	146.2	1		
CPTPA 2	153.0650	158.1600	97.4	5		
TAC 7	168.2000	168.2000	146.2	7		
A/G Branch 1	166.6125	166.6125		15		
Prepared by (RESL)		Approved by (PSC2)		Date		Time
Stacey Clemenson (t)		Mike Rubenstein		07/25/2021		2000



ASSIGNMENT LIST		1.	2. Division/Group			
		1		Scott Fire Group – Page 3 of 3		
3. Incident Name		4. Operational Period				
Cougar Rock Complex		Date: 07/26/2021		Time: 0600-2200		
5. Operations Personnel						
Operations Chief – Line Branch Director		Joe Brabender	Group Supervisor	Danny Lemer, Dave Gregory (t)		
Operations Chief - Planning		Ron Naber	Air Branch Director			
6. Resources Assigned This Period						
Strike Team/Task Force/ Resource Designator	Last Shift	Leader	No. Pers.	Trans. Needed	Old Resource Number	Glidepath Info
E-9024 EXCA Cleveland Logging	7/27	Todd Cleveland	1	N		
E-58 FEL1 Cleveland Logging	7/27	Johnny Weibert	1	N		
E-59 FEL1 Cleveland Logging	7/27	Rusty Telford	1	N		
E-67 FEL1 Cleveland Logging	7/27	Tyson Higgins	1	N		
E-68 FEL1 Cleveland Logging	7/27	Ben Morris	1	N		
E-69 FEL1 Cleveland Logging	7/27	Todd Cleveland	1	N		
E-9056 FEL1 Cleveland Logging	7/27	Jimmy Johnson	1	N		
E-9057 FEL1 Teathered Cleveland	7/27	Rusty Telford	1	N		
E-70 LDFR Cleveland Logging	7/27	Hugh Henderson	1	N		
E-9028 LDFR Cleveland Logging	7/27	Jim Auer	1	N		
E-9029 LDFR Cleveland Logging	7/27	Garry Giess	1	N		
E-71 LOG Cleveland Logging	7/27	Wayneson Thorhay	1	N		
E-72 LOG Cleveland Logging	7/27	Greg Beplate	1	N		
E-73 LOG Cleveland Logging	7/27	Chad Renner	1	N		
E-74 LOG Cleveland Logging	7/27	Austin Schiermeister	1	N		
E-9034 PROC Cleveland Logging	7/27	Rodney Hill	1	N		
E-9035 PROC Cleveland Logging	7/27	Tice Huffman	1	N		
E-64 SERV Cleveland Logging	7/27	Kevin Geis	1	N		
E-61 SKID Cleveland Logging	7/27	Mark Gies	1	N		
E-62 SKID & E-65 LOWB Cleveland Logging	7/27	Devin Jones, Josh Hayes (trans)	2	N		
E-63 LOWB Cleveland Logging	7/27	Roy Michael	1	N		
E-66 LOWB Cleveland Logging	7/27	Jim Auer	1	N		
E-75 LOWB Cleveland Logging						
E-76, E-77 LOWB Cleveland	7/27		1	N		
7. Control Operations						
<b>Task:</b> Black-line when conditions permit. Continue to mop-up black line edges. Utilize air resources when appropriate. <b>Purpose:</b> Reduce the loss of high value timber. <b>End State:</b> The Scott fire has a viable fire suppression/values at risk protection plan.						
8. Special Instructions						
Utilize LCES. Safely establish containment lines. Grandad Bridge and Captains Cabin road closures will be staffed by Clearwater Co. S.O. Deputies as anticipated traffic flow requires.						
9. Division/Group Communication Summary						
Function	Frequency - RX	Frequency - TX	Tone	Channel	Comments	
COMMAND 1	169.7550	167.1000	146.2	1		
CPTPA 2	153.0650	158.1600	97.4	5		
TAC 7	168.2000	168.2000	146.2	7		
A/G	166.6125	166.6125		15		
Prepared by (RESL)		Approved by (PSC2)		Date	Time	
Stacey Clemenson (t)		Mike Rubenstein		07/25/2021	2000	

ASSIGNMENT LIST		1. Branch	2. Division/Group			
		<b>2</b>			<b>Benton Fire Group – Page 1 of 2</b>	
3. Incident Name	Cougar Rock Complex		4. Operational Period	Date: 07/26/2021	Time: 0600-2200	
5. Operations Personnel						
Operations Chief – Line/ Branch Director	Don Hammack		Group Supervisor	RJ Hannah		
Operations Chief - Planning	Ron Naber		Air Branch Director			
6. Resources Assigned This Period						
Strike Team/Task Force/ Resource Designator	Last Shift	Leader	No. Pers.	Trans. Needed	Fire Info	Glidepath info
O-3 TFLD	7/31	Mitch Scates	1	N		
C-9002 HC1 Tahoe	7/29	Dan Guerrero	21	N		
C-6 HC2 Franco	8/10	Noe Franco-Guzman	20	N		R&R 7/28+7/29
C-7 HC2 Franco	8/10	Rafael Alcantar-Cisneros	20	N		R&R 7/28+7/29
O-117 CRWB	8/03	Jeff Benson	1	N		
C-12 HC2 Red Hots 1	7/29	Adam Few	23	N		
C-13 Grizzly F.F. Blue	8/03	Fernando Hernandez	20	N		
O-37 FAL1	8/07	Cody Steinbruecker	1	N	O-1 Benton Ridge	R&R 7/23-7/24
O-107 THSP	8/01	Scott Bonk	1	N		
E-113 ENG6 Returning Heros 965	8/04	Victor Lujan	8	N		
ENG						
E-14 WTS2 Fox Creek	8/07	Randy Poirier	1	N	Butte Creek	
E-17 WTS2 Fury Concrete	8/01	Lee Steiner	1	N	Cougar	
O-3 HEQB	7/28	Dan Patterson	1	N	O-3 Scott	
O-9002 HEQB (t)	7/28	Russell Smith	1	N	O-7 Scott	
E-9016 DOZ4 Mark Deyo	8/01	Howard Winn	1	N		
E-50 D7 PUMPER CAT Stanton	8/01	Roland	2	N		
E-9039 EXCA Mark Deyo	8/01	Trevor Deyo	1	N		
E-55 FEL2 Kuykendall	7/26	Zach Allen	1	N		
E-56 FEL2 Teathered Kuykendall	7/27	Kevin Howell	1	N		
E-49 SKG1 Stanton	7/26	Cody	1	N		
E-57 SKG1 Miller Timber	7/28	Juan Zaragoza-Lara	2	N		
E-97 SKG3 Rocky Mountain	8/06	Don Lyle	2	N		
E-98 SKGS Rocky Mountain	8/06	Devin Meyer	2	N		
7. Control Operations						
<p><b>Group includes the Benton Face, Benton Ridge, North Fork Benton, Benton South and Lovell Knob fires.</b></p> <p><b>Task:</b> Hold black line operations. Continue to prep for black line opportunities.</p> <p><b>Purpose:</b> Secure control lines and create a larger buffer to keep fires within control lines.</p> <p><b>End State:</b> Kept fires within the control lines.</p>						
8. Special Instructions						
<p>Utilize LCES.</p> <p>Grandad Bridge and Captains Cabin road closures will be staffed by Clearwater Co. S.O. Deputies as anticipated traffic flow requires.</p>						
9. Division/Group Communication Summary						
Function	Frequency - RX	Frequency - TX	Tone	Channel	Comments	
COMMAND 1	169.7550	167.1000	146.2	1		
CPTPA 2	153.0650	158.1600	97.4	5		
TAC 8	168.6000	168.6000	146.2	8		
A/G	167.8375	167.8375		14		
Prepared by (RESL) Stacey Clemenson (t)	Approved by (PSC2) Mike Rubenstein		Date	07/25/2021	Time	2000

ASSIGNMENT LIST		1. Branch	2. Division/Group			
		2		Benton Fire Group – Page 2 of 2		
3. Incident Name	Cougar Rock Complex	4. Operational Period Date: 07/26/2021		Time: 0600-2200		
5. Operations Personnel						
Operations Chief – Line/ Branch Director	Don Hammack	Group Supervisor	RJ Hannah			
Operations Chief - Planning	Ron Naber	Air Branch Director				
6. Resources Assigned This Period						
Strike Team/Task Force/ Resource Designator	Last Shift	Leader	No. Pers.	Trans. Needed	Fire Info	Glidepath info
O-36 EMTF EMT 2	8/03	Yoaila Kopelowitz	1	N		
O-44 EMTF EMT 1	8/03	Misty Bauer	1	N		
O-45 EMPF Medic 5	8/07	Ayala Rahm	1	N		
E-14 AMBU Best Practices 2	8/03	Frank Batten, Shyre Isham	2	N		
O-98 SOF2	8/02	Steve Wyatt	1	N		
7. Control Operations						
<p>Group includes the Benton Face, Benton Ridge, North Fork Benton, Benton South and Lovell Knob fires.            Task: Hold black line operations. Continue to prep for black line opportunities.            Purpose: Secure control lines and create a larger buffer to keep fires within control lines.            End State: Kept fires within the control lines.</p>						
8. Special Instructions						
<p>Utilize LCES.            Grandad Bridge and Captains Cabin road closures will be staffed by Clearwater Co. S.O. Deputies as anticipated traffic flow requires.</p>						
9. Division/Group Communication Summary						
Function	Frequency - RX	Frequency - TX	Tone	Channel	Comments	
COMMAND 1	169.7550	167.1000	146.2	1		
CPTPA 2	153.0650	158.1600	97.4	5		
TAC 8	168.6000	168.6000	146.2	8		
A/G	167.8375	167.8375		14		
Prepared by (RESL) Stacey Clemenson (t)		Approved by (PSC2) Mike Rubenstein		Date 07/25/2021	Time 2000	


ASSIGNMENT LIST		1. Branch	2. Division/Group			
		2			Butte Creek Fire Group	
3. Incident Name Cougar Rock Complex		4. Operational Period Date: 07/26/2021			Time: 0600-2200	
5. Operations Personnel						
Operations Chief – Line/ Branch Director	Don Hammack	Group Supervisor		Manny Mendoza, Matt Knott (t)		
Operations Chief - Planning	Ron Naber	Air Branch Director				
6. Resources Assigned This Period						
Strike Team/Task Force/ Resource Designator	Last Shift	Leader	No. Pers.	Trans. Needed	Fire Info	Glidpath info
O-103 TFLD	7/28	Roy Angeny	1	N		O-1 Armstrong
E-13 ENG6 Alder Creek	7/27	Alberto Paz	3	N		
E-19 WAT2 Richardson Tree Care	7/27	Dave Betz	1	N		
O-36 EMTF EMT 2	8/03	Yoaila Kopelowitz	1	N		
O-44 EMTF EMT 1	8/03	Misty Bauer	1	N		
O-45 EMPF Medic 5	8/07	Ayala Rahm	1	N		
E-14 AMBU Best Practices 2	8/03	Frank Batten, Shyre Isham	2	N		
O-98 SOF2	8/02	Steve Wyatt	1	N		
7. Control Operations						
<b>Task:</b> Patrol and mop-up fire edge. <b>Purpose:</b> Keep fire between Butte and Thompson Creeks and North of Kaufman Saddle. <b>End State:</b> Fire growth was limited and timber values were protected.						
8. Special Instructions						
Utilize LCES. Watch out for logging traffic from Kaufman Saddle to Highway 11. Grandad Bridge and Captains Cabin road closures will be staffed by Clearwater Co. S.O. Deputies as anticipated traffic flow requires						
9. Division/Group Communication Summary						
Function	Frequency - RX	Frequency - TX	Tone	Channel	Comments	
COMMAND 1	169.7550	167.1000	146.2	1		
CPTPA 2	153.0650	158.1600	97.4	5		
TAC 9	166.7250	166.7250	146.2	9		
A/G	167.8375	167.8375		14		
Prepared by (RESL) Stacey Clemenson		Approved by (PSC2) Mike Rubenstein		Date 07/25/2021		Time 2000

<b>AIR OPERATIONS SUMMARY</b>		Prepared By: <b>Ruben Griego</b>	Prepared Date: <b>7/25/2021</b>	Prepared Time: <b>1830</b>
<b>1. INCIDENT NAME:</b> Cougar Rock Complex	<b>2. OPS PERIOD DATE:</b> 7-26-2021	<b>START TIME:</b> 0600	<b>END TIME:</b> 2200	<b>SUNRISE:</b> 0520
<b>SUNSET:</b> 2022				
<b>3. REMARKS:</b> (Safety Notes, Hazards, Air Operations, Special Equipment, etc.): Keep alert and be responsive to needs of the changing environment Watch - General Aviation and be aware of reduced visibility due to weather and smoke - <b>Think clearly and provide for Safety</b> Branch I - A/G = 166.6125 Channel 15 Branch II - A/G = 167.8375 Channel 14 ** Refrain from excess talking on the A/G frequencies **				
<b>4. Medical:</b> Medivac/Extraction - Order through communications. Refer to <u>Medical plan</u> N27HX as Medivac if needed		<b>5. TFR / NOTAM:</b> TFR - Cougar Rock 1/1751 vhf - 127.100 FM - 166.6125 10,500' msl Refer to FAA Website for specific #		
<b>Aviation hazard map located at the Orofino Helibase</b>		<b>Submit cost summary to:</b> 2021.cougarrock.finance@firenet.gov		
<b>ID Nat. Guard Helicopters will be on @ 0830 then re-position to Lower Fork</b>				

6. PERSONNEL	NAME	PHONE #	7. FREQUENCIES	AM	FM	8. FIXED-WING Avail/ Type/ Make-Model/ N#/ Base
			A/A TFR & Fixed Wing			Air Attack available from Grangeville
			A/A Rotor Wing - Disp	132.025		
			Branch 1 A/G		166.6125	Order Helicopters thru Communications
			Branch II A/G		167.8375	Retardant and Lead Plane upon request through Air Attack or Operations to Grangeville
			Orofino Helibase DECK		163.100 RX/TX	Fixed wing and Air Attack ordered by Branch I, II & AOBD - Grangeville
Helibase Manager (f)	Ruben Griego	760 718-0688	Helibase		Command 1	Mission request thru Commo, they forward to Helibase- Command 1
			Johnson Fire A/A	124.2250		
			Orofino Airport (S68)	CTAF 122.8		

• HELICOPTERS (Use Additional Sheets as Necessary)

FAA N#	TY	MAKE/ MODEL	BASE	START	AVAIL	REMARKS	FAA N#	TY	MAKE/ MODEL	BASE	START	AVAIL	REMARKS
N27HX	III	B407	Orofino	0800	2000								Lower Fork H.S.
328 ID Nat. Guard	I	UH-60	Lewiston	0830	2000	Ed Kassa, IDL	Reposition						46 28.020
982 ID Nat. Guard	I	UH-60	Lewiston	0830	2000	208 290-7994	Reposition						116.14.307
<b>Air Operations Branch Director</b>										<b>Date/Time</b> 7/25/2021			

INCIDENT RADIO COMMUNICATIONS PLAN		Incident Name Cougar Rock Complex		Date/Time Prepared 7/25/2021 1930		Operational Period Date/Time 7/26/2021 0700 – 7/27/2021 0700					
Ch #	Function	Channel Name	Assignment	RX Freq N or W	RX Tone	TX Freq N or W	Tx Tone	Mode	Remarks		
1	Repeater	Command 1	All Resources	169.7500 N	146.2	167.1000 N	146.2	A	To Communications		
2	Repeater	Command 2	All Resources	173.9625 N	146.2	164.8625 N	146.2	A	To Communications		
3	Repeater	Command 3	All Resources	171.9250 N	146.2	165.9875 N	146.2	A	To Communications		
4	Repeater	Command 4	All Resources	171.8875 N	146.2	162.1875 N	146.2	A	To Communications		
5	Repeater	CPTPA 2	I/A	153.0650 N	97.4	158.1600 N	97.4	A	ELK Butte/Grangeville Dispatch		
6	Tactical	TAC 6	Hobbit	168.0500 N	146.2	168.0500 N	146.2	A	NIFC Tac		
7	Tactical	TAC 7	Scott	168.2000 N	146.2	168.2000 N	146.2	A	NIFC Tac		
8	Tactical	TAC 8	Benton	168.6000 N	146.2	168.6000 N	146.2	A	NIFC Tac		
9	Tactical	TAC 9	Butte Creek	166.7250 N	146.2	166.7250 N	146.2	A	NIFC Tac		
10	Tactical	TAC 10	FS Fire	166.7750 N	146.2	166.7750 N	146.2	A	NIFC Tac		
11	Tactical	TAC 11	All Resources	168.2500 N	146.2	168.2500 N	146.2	A	NIFC Tac		
12	Tactical	ID EMS	All Resources	155.2800 N		155.2800 N	156.7	A	EMS AMBO/AIR UNITS		
13	Air/Ground	IDL A2GS	All Resources	151.1450 N		151.1450 N	100.0	A	Statewide Air/Guard		
14	Air/Ground	A/G	Branch 2	167.8375 N		167.8375 N		A	NIFC A/G		
15	Air/Ground	A/G	Branch 1	166.6125 N		166.6125 N		A	NIFC A/G		
16	Air Guard	Air Guard	All Resources	168.6250 N		168.6250 N	110.9	A	Emergency		
Prepared By (Communications Unit) Thomas Robbins COML 				Incident Location Orofino ID							

The convention calls for frequency lists to show four digits after the decimal place, followed by either an "N" or a "W", depending on whether the frequency is narrow or wide band. Mode refers to either "A" or "D" indicating analog or digital (e.g. Project 25) or "M" indicating mixed mode. All channels are shown as if programmed in a control station, mobile or portable radio. Repeater and base stations must be programmed with the Rx and Tx reversed.

**Incident:**  
Cougar Rock Complex

**Date:**  
July 26, 2021

**Shift: Day**  
0600 - 2200



**SAFETY MESSAGE**  
**SAFETY IS OUR FIRST PRIORITY**  
*Fire fighter and public safety comes first on every fire, every time*



**DEMOB**

DRIVE SAFELY

HEADLIGHTS ON

SEATBELTS UTILIZED

FOLLOW THE POSTED SPEED

DO NOT DRIVE WHILE SLEEPY

DO NOT TEXT OR USE PHONE WHILE DRIVING

TAKE BREAKS, FOLLOW 10 HOUR/16 HOUR LIMITS

PRACTICE MODULE OF ONE DURING YOUR TRAVELS TO YOUR HOME BASE.

**ARRIVE BACK HOME SAFELY!!! Your loved ones are waiting for you.**

You have seen them on every lonely stretch of highway. You know what it represents, **Death.**

But have you really, really thought about it.

I wonder if they had their seat belts on. A lot of highway deaths are a result of no seat belt usage. Were they driving to fast for the road conditions? Was the driver on a cellphone or distracted in some other manner? Did they try to pass on a solid yellow line? If so, they lost. Was this a site of some gruesome, bloody mess, I think so? But who were they. A family perhaps, a mom, a dad, and the kids. Maybe a daughter with all her brides' maids on their way to the church for that special day. Maybe it was a squad of firefighters on their way home after an assignment.

Who knows, does it matter?

Does it really, really matter?

**YES, YES it does!**

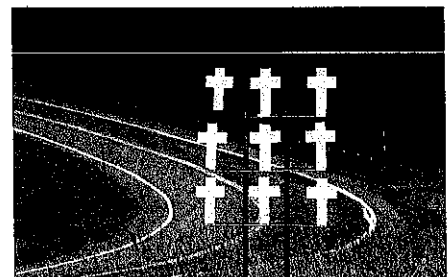
and **YOU** matter!

We hope you mitigate your risks while driving. You know what they are, seat belts and headlights on. Slow down, drive defensively, take breaks, no distractions - you know the drill. Please implement it.

**You are important to many family and friends back home and to this Team.**

Do not become a little white cross on some lonely stretch of highway!!!

**Your Safety Team.... Marvin Carpenter, Opie Blackwell,  
Steve Wyatt,  
and Each of YOU.**



## MEDICAL PLAN (ICS 206 WF)

<b>1. Incident/Project Name</b>		<b>2. Operational Period</b>					
Cougar Rock Complex		Date/Time 7-26-21 0700-1900					
<b>3. Ambulance Services</b>							
Name	Complete Address	Phone & EMS Frequency	Advanced Life Support (ALS)				
			Yes	No			
Clearwater county ambulance	1195 Riverside ave, Orofino	911 208-476-3771	yes				
Best Practice Medicine	On site Boehls spike				no		
Best Practice Medicine	On site Headquarters				no		
Army corp of engineers	Boat rescue	208-716-0910 Paul Pence			no		
Sheriff	Boat rescue	911			no		
<b>4. Air Ambulance Services</b>							
Name	Phone	Type of Aircraft & Capability					
Life Flight Lewiston	911 or 800-232-0911	Night vision, ALS transport					
Two Bear Air	911 or 406-758-5585	Night vision, hoist, can transport to ground unit or private aeromed unit.					
<b>5. Hospitals</b>							
Name Complete Address	Lat: Long:	Travel Time (from ICP)		Phone	Helipad		Level of Care Facility
		Air	Ground		Yes	No	
Clearwater county Hospital 1195 riverside Ave Orofino	'		4 min	208-476-4555	X		Critical Access
St Josephs Regional Trauma Center Lewiston	Lat: N 46°25.016' Long: W 117°01.449'		57 min	208-743-2511	X		Level 2 trauma
Benewah community Hospital 229 south 7 <sup>th</sup> st St Maries	Lat: 47.3146° N Long: 116.5674°		129min	208-245-5551			Critical care access
Harborview Burn Center 395 9 <sup>th</sup> ave Seattle	Lat: 47.6039° N Long: 122.3241° W		346min	206-520-5000	X		Level 1 trauma center
<b>Special Notes</b>							
The Medical unit will be open from 0600-2200. After hours contact the incident ambulance and the MEDL in case of an emergency in camp or on the line.							
<b>6. Division</b>		<b>Area Location Capability</b>					
<b>Branch 1 Boehl's</b>		<b>EMS Responders &amp; Capability:</b>		<b>Cody Brandt EMTF (EMT-3) Adam Osiadacz EMPF (medic 4)</b>			
		<b>Equipment Available on Scene:</b>		ALS & BIS , sked kit, 1 <sup>st</sup> aid support kit, O2 AED			
		<b>Medical Emergency Channel:</b>					
		<b>ETA for Ambulance to Scene:</b>		60 minutes			
		<b>Air/Ground:</b>					
		<b>Approved Helispots:</b>		Boehls spike			



# MEDICAL PLAN (ICS 206 WF)

<b>Branch 2 Headquarters</b>	<b>EMS Responders &amp; Capability:</b>	Gwen Couture MEDL Ayala Rahm EMPF (medic 5) Misty Bauer EMTF (EMT- 1) Yoaila Kopelowitz EMTF (EMT-2)
	<b>Equipment Available on Scene:</b>	AED, BLS line gear, sked, O2 AED
	<b>ETA for Ambulance to Scene:</b>	Ambo 2 on scene
	<b>Approved Helispot:</b>	
	<b>Lat:</b>	+46° 37.800721592
	<b>Long:</b>	-115° 48.52494863'
<b>ICP Orofino</b>	<b>EMS responders and capability</b>	Teri Miller EMPT
	<b>Equipment Available on Scene:</b>	ALS AED SPINAL IMOBILIZATION
	<b>Medical Emergency Channel:</b>	
	<b>ETA for Ambulance to Scene:</b>	4 MIN
<b>1. Prepared by (Medical Unit Leader)</b>	<b>Date/Time</b>	<b>2. Reviewed By (Safety Officer)</b>
Teri Miller 406-544-3070 <i>Teri Miller</i>	07/25/21 1900	Marvin Carpenter 07/25/21 1900 <i>Marvin Carpenter</i>



## ASSIGNMENT-SPECIFIC MEDICAL EMERGENCY ACTION PLAN

### Pre-Planning for today's assignment

What are the likely hazards that could cause injuries? What kind of severe injuries?		
Who is the likely in-charge DIVS or overhead for an emergency in your assigned area today? (i.e. "Division Zulu")		
Who are the Medical personnel assigned to your part of the incident? What are their capabilities?		
Other Emergency Responders: fire dept., crash rescue, ambulance?		
Communications: Command channel, Air to Ground, Medical helicopters, local rescue/medical?		
Transportation methods available	Ground vehicle, drop point, coordinates, travel route?	
	Aircraft I.D, Helispot names, coordinates? Hoist capable, internal transport	
	Other available methods - contingency	
Most likely workforce for evacuation		

### Response checklist

#### Who takes charge?

- DIVS or designated Overhead manages the overall scene and evacuation process.
- Medical personnel and emergency responders manage patients and assist in rescue/extrication.
- OPS and IC make command decisions so the emergency can be given full attention and management. They continue to manage ongoing incident operations.

#### Response sequence:

- First, secure the scene and protect responders and patients from further injury. Render first aid.
- Clear the Command channel for "Emergency Traffic only" if this is a critical emergency. If not, inform Communications of non-critical-emergency status and use normal communications.
- Contact closest Medical personnel and DIVS or designated Overhead for response.

Information for Communications: Medical Incident Report – See last page of IAP and IRPG pages 118 and 119.

Helicopter Extraction Operations: See IRPG pages 116 and 117.

Severe Weather: In the event of forecasted severe weather, implement Incident Severe Weather Plan.

Incident Within Incident: Upon arriving at the incident, all overhead should obtain and review the team's Incident Within Incident Plan.

## Incident within Incident (IWI) Plan

### Immediate response:

- Secure the site to prevent further injury to victims and responders.
- Render first aid using crew and line EMT's and nearby forces.
- Designate a Point of Contact at the scene. Notify communications who this is and when it changes.
- Notify Communications and Medical Unit. Identify whether this is a life threatening emergency or less serious injury.
- Communications requests "Emergency Traffic" to clear channel if it is a life threatening emergency.
- Transmit critical information from the scene to Communications: Type and extent of injury; Airway or breathing problems; serious bleeding; EMT present or needed; ALS needed. Give specific location of victim: Lat/Long; ground or air access; DP#; Helispot or helicopter medevac site. Do not use victim or crew names in any communications. Use the Medical Incident Report, pages 118 and 119 of the Incident Response Pocket Guide (IRPG) as a checklist.
- Request appropriate Medical Unit, incident resource and local 9-1-1 EMS response.
- Designate an Incident Within Incident Commander (IWIC). DIVS is normally in charge. Other Operations persons may be in charge until relieved. Notify communications who this is and when it changes.
- Communications: If requested, notify Local 9-1-1 EMS and other responders right away. Provide staging information, medical evacuation location(s), IWIC, medical contact information and communication protocol. Post Medical Incident Report at Communications desk to facilitate sharing critical information.
- Medical Unit Leader should assist the IWIC in coordinating any Local EMS, incident medical, and transportation response.
- Communications notifies DIVS, Line OPS and SOF2 to respond to the scene.
- In the event we are shadowing another team, provide whatever assistance we can to help them with the situation.

### Aviation Mishap:

For an aviation accident within the fire area, the standard Incident within Incident protocols will be followed.

For an aviation accident outside of the fire area, the following procedure will be followed in addition to the Incident within an Incident Protocols.:

If an aviation accident is suspected or reported, Helibase will dispatch Air Attack to the location to assess the scene. If no Air Attack is available than the closest aviation resource will be dispatched. Helibase will then make a determination on the most appropriate helicopter available to respond for rescue considering time, capabilities, access, etc. Once on scene the helitack on site will designate a POC to be in charge of the situation until relieved. Once these resources are on scene and communication is established the Incident within an Incident protocols remain the same.

**COUGAR ROCK COMPLEX**  
**ID-CTS-000623**  
**VIRTUAL DEMOB PROCESS V1.1**

The following virtual demobilization process has been established for all resources demobilizing from the Cougar Rock Complex. You will need a cell or internet connection to complete the Check-Out Form.

**STEP 1:** Return all accountable property (radios, supplies, etc.) to the Communications Unit and/or the Supply Unit at Headquarters Camp or ICP. **\*\*\*ALL NON-LOCAL VEHICLES THAT HAVE BEEN OFF-PAVEMENT MUST GO THROUGH WEED WASH AT THE 45555 HWY 12, OROFINO PRIOR TO DEMOBILIZING\*\***

**STEP 2:** Deliver Unit Logs, Field WX Observations, Performance Evaluations and other documentation to the Documentation Unit at the Orofino ICP. If you do not check-out at the Orofino ICP, arrange with your supervisor to deliver your documentation to the Documentation Unit.

**STEP 3:** Finalize all CTRs and Shift Tickets and complete any other required Finance demobilization item(s) per the Finance Demobilization sheet.

**STEP 4:** After you have completed Steps 1, 2 and 3, use the following QR code to access the virtual Demobilization Form. After you have answered all questions, press the "SUBMIT" button to submit the form.



<https://forms.office.com/g/gCN9QfrQPD>

The Demobilization Unit will not demobilize you with Grangeville Dispatch until it has received your completed virtual Demobilization Form.

If you are unable to complete the virtual Demobilization Form, visit the Demobilization Unit at the Orofino ICP or contact the Demobilization Unit at **2021.cougarrock.demob@firenet.gov** or at **208-494-2355** to complete your demob.

**IF YOU ARE TRAVELING HOME BY AIR, YOU MUST CONTACT THE DEMOBILIZATION UNIT NOT LESS THAN 72 HOURS PRIOR TO YOUR DEMOB DATE TO CONFIRM TRAVEL INFORMATION.**

# Finance Demob Process

The finance demob process can be done remotely or in person.

## Remote Demob for Equipment and / or Personnel / Crews

- Complete your Last Day Shift Ticket and / or CTR (this would include your travel). Forest Service AD's need to project their time for their travel
- Write your email address on the Shift Ticket and / or CTR
- Send your Shift Ticket and / or CTR to:  
[2021.cougarrock.finance@firenet.gov](mailto:2021.cougarrock.finance@firenet.gov)
- Finance will complete the posting and send the documents back to you by email for your review and signature
- Please return the Final Signed Documents to the finance email (Contracted Equipment – in lieu of signature approval you may respond to the finance email that “All is Correct”)
- Forest Service Casual Hire Employees (AD's) should also submit their travel information which may include per diem, lodging, baggage fees, gas receipts etc.

## In Person Demob for Equipment and / or Personnel / Crews

- Complete your Last Day Shift Ticket and / or CTR (this would include your travel.) Forest Service AD's need to project their travel time.
- Turn in to finance the Shift Ticket and / or CTR for input
- A draft will be provided for review
- After review and approval a “Final” will be printed for signatures

**If you have any questions call Finance at 208-820-4661**

## Upcoming Demob's:

**07/26/2021**

EXCA	E-9	QUALITY EXCAVATION
TCTL	E-16	QUALITY EXCAVATION-DOUG JOHNSON
DOZ1	E-51	KUYKENDALL LOGGING - CAT D7
SEC1	O-4	NELB, SEAN R
SEC1	O-22	CLEARWATER COUNTY SHERIFF DEPARTMENT
SEC1	O-23	CLEARWATER COUNTY SHERIFF'S DEPARTMENT
SEC1	O-24	CLEARWATER COUNTY SHERIFF'S DEPARTMENET
SEC1	O-25	CLEARWATER COUNTY SHERIFF'S DEPARTMENT
COML	O-34	SENDRA, JULIE BROWN
INCM	O-36	BURTON, ROBERT PAUL
RADO	O-38	SAPP, TIMOTHY SHAWN

**07/27/2021**

CC	C-2	GOLDEN ROD
RCDM	O-33	STEVENS, PHILIP
SKG1	E-49	DAROLD STANTON LOGGING - SKIDGINE
DOZ3	E-53	KUYKENDALL LOGGING - CAT D4H
SEC2	O-6	WALDEN, JOHN
SOF2	O-15	BLACKWELL, LESLIE GUS

**07/28/2021**

RCDM	O-32	WELCH, JACQUELINE ALEXANDRIA
EXCA	E-9024	CLEVELAND LOGGING EXCA
LDFR	E-9028	CLEVELAND LOGGING LOADER
LDFR	E-9029	CLEVELAND LOGGING LOADER
LDFR	E-9034	CLEVELAND LOGGING PROC
LDFR	E-9035	CLEVELAND LOGGING PROC
FEL1	E-9056	TODD CLEVELAND
FEL1	E-9057	TODD CLEVELAND
WEED	E-8	WESTERN STATES EMER
FEL1	E-54	KUYKENDALL LOGGING - 2019 TIMBERPRO 3018
SKG1	E-57	MILLER TIMBER
FEL1	E-58	TODD CLEVELAND LOGGING - 2019 TIGERCAT 855
FEL1	E-59	TODD CLEVELAND LOGGING - 2020 TIGERCAT 855
SKD1	E-61	TODD CLEVELAND LOGGING - RUBBER TIRE SKIDDER -
SKD1	E-62	TODD CLEVELAND LOGGING - RUBBER TIRE SKIDDER
LOWB	E-63	TODD CLEVELAND LOGGING -TRANSPORT T1
MEC	E-64	TODD CLEVELAND LOGGING - SERVICE TRUCK
LOWB	E-65	TODD CLEVELAND LOGGING - LOG LOADER T1
LOWB	E-66	TODD CLEVELAND LOGGING - HITACHI LOG LOADER T1
FEL1	E-67	TODD CLEVELAND LOGGING - TIMBERPRO PROCESSOR
FEL1	E-68	TODD CLEVELAND LOGGING - PROCESSOR LINKBELT 350
FEL1	E-69	TODD CLEVELAND LOGGING - 350X3 LINKBELT
LDFR	E-70	TODD CLEVELAND LOGGING - SHOVEL LOADER - 2021
LOG	E-71	TODD CLEVELAND LOGGING - LOG TRUCK
LOG	E-72	TODD CLEVELAND LOGGING - LOG TRUCK
LOG	E-73	TODD CLEVELAND LOGGING - LOG TRUCK

\* If you have not checked in via the QR code on IAP cover, please do so as soon as possible for resource accountability

\*\* If you are flying you must get travel request info to Demob at least 72 hours in advance

### Upcoming Demob's:

LOG	E-74	TODD CLEVELAND LOGGING - LOG TRUCK
LOWB	E-75	TODD CLEVELAND LOGGING - HITACHI LOG LOADER T1 -
LOWB	E-76	TODD CLEVELAND LOGGING
LOWB	E-77	TODD CLEVELAND LOGGING
LOWB	E-85	LOWRY PETERBILT LOG TRUCK
ITSS	O-17	ROGERS, DOMINIC B
DIVS	O-20	WAGNER, PAUL FRANCIS
FDUL	O-67	OXBORROW, MICHAEL R

\* If you have not checked in via the QR code on IAP cover, please do so as soon as possible for resource accountability

\*\* If you are flying you must get travel request info to Demob at least 72 hours in advance



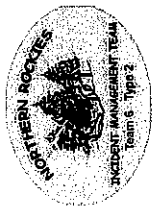
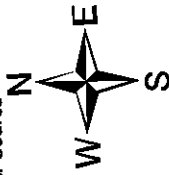
# IAP- Branch 1

Cougar Rock Complex  
IDCTS-000623  
July 26, 2021

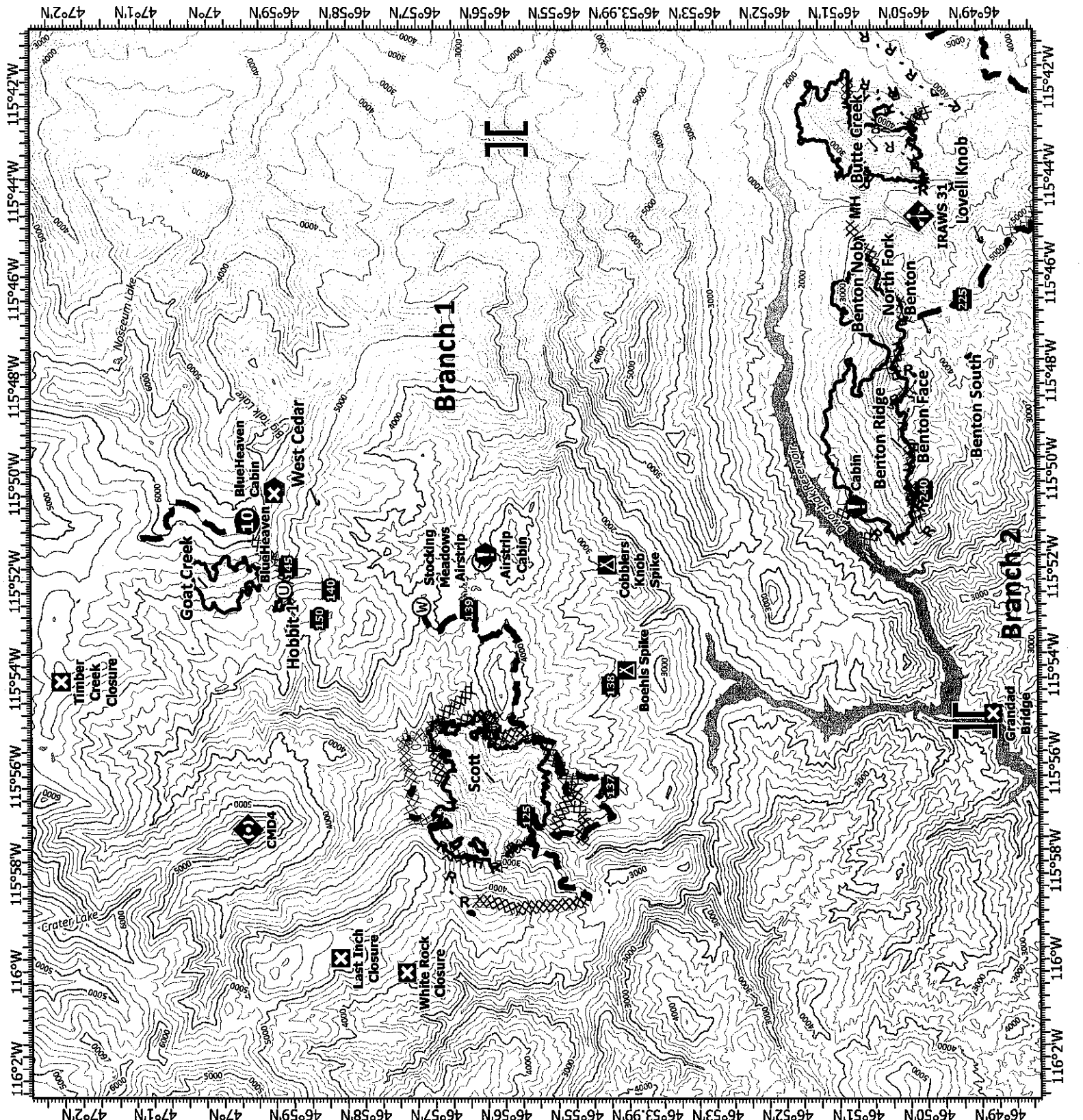
6030 acres at 1500, 07/25/2021



- Wildfire Daily Fire Perimeter
- Completed Dozer Line
- Completed Hand Line
- Completed Mixed Construction Line
- Completed Road as Line
- Planned Dozer Line
- Planned Mixed Construction Line
- Planned Road as Line
- Airstrip or Airport
- Helispot
- Unimproved Landing Area
- Branch Break
- Drop Point
- Closure
- Camp
- Value at Risk
- Mobile Weather Unit
- Repeater
- Water Source



JConnelley  
7/25/2021 1655  
North American 1983 Datum,  
LatLong Grid



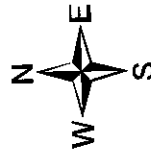
# IAP - Branch 2

Cougar Rock Complex  
IDCTS-000623  
July 26, 2021

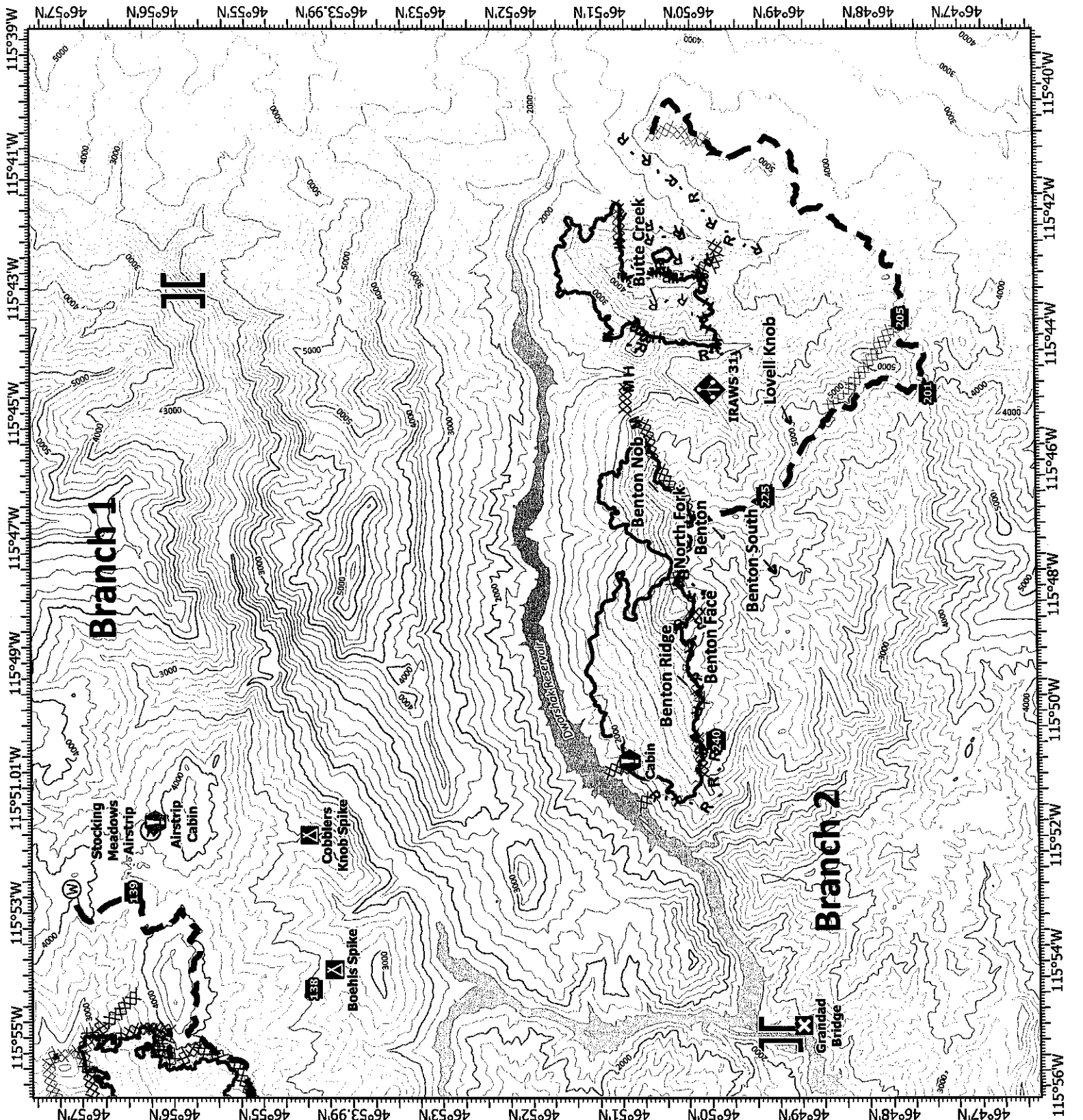
6030 acres at 1500, 07/25/2021



- Wildfire Daily Fire Perimeter
- Completed Dozer Line
- Completed Hand Line
- Completed Mixed Construction Line
- Completed Road as Line
- Planned Dozer Line
- Planned Mixed Construction Line
- Planned Road as Line
- Airstrip or Airport
- Branch Break
- Drop Point
- Closure
- Camp
- Value at Risk
- Mobile Weather Unit
- Water Source



JConnelley  
7/25/2021 1656  
North American 1983 Datum.





# MEDICAL PLAN (ICS 206 WF)

Controlled Unclassified Information//Basic

## Medical Incident Report

**FOR A NON-EMERGENCY INCIDENT, WORK THROUGH CHAIN OF COMMAND TO REPORT AND TRANSPORT INJURED PERSONNEL AS NECESSARY.**

**FOR A MEDICAL EMERGENCY: IDENTIFY ON SCENE INCIDENT COMMANDER BY NAME AND POSITION AND ANNOUNCE "MEDICAL EMERGENCY" TO INITIATE RESPONSE FROM IMT COMMUNICATIONS/DISPATCH.**

Use the following items to communicate situation to communications/dispatch.

**1. CONTACT COMMUNICATIONS / DISPATCH** (Verify correct frequency prior to starting report)

*Ex: "Communications, Div. Alpha. Stand-by for Emergency Traffic."*

**2. INCIDENT STATUS:** Provide incident summary (including number of patients) and command structure.

*Ex: "Communications, I have a Red priority patient, unconscious, struck by a falling tree. Requesting air ambulance to Forest Road 1 at (Lat./Long.) This will be the Trout Meadow Medical, IC is TPLD Jones. EMT Smith is providing medical care."*

Severity of Emergency / Transport Priority	<input type="checkbox"/> <b>RED / PRIORITY 1</b> Life or limb threatening injury or illness. Evacuation need is <b>IMMEDIATE</b> <i>Ex: Unconscious, difficulty breathing, bleeding severely, 2° - 3° burns more than 4 palm sizes, heat stroke, disoriented.</i> <input type="checkbox"/> <b>YELLOW / PRIORITY 2</b> Serious injury or illness. Evacuation may be <b>DELAYED</b> if necessary. <i>Ex: Significant trauma, unable to walk, 2° - 3° burns not more than 1-3 palm sizes.</i> <input type="checkbox"/> <b>GREEN / PRIORITY 3</b> Minor injury or illness. Non-Emergency transport <i>Ex: Sprains, strains, minor heat-related illness.</i>	
Nature of Injury or Illness & Mechanism of Injury		Brief Summary of Injury or Illness <i>(Ex: Unconscious, Struck by Falling Tree)</i>
Transport Request		Air Ambulance / Short Haul/Hoist Ground Ambulance / Other
Patient Location		Descriptive Location & Lat. / Long. (WGS84)
Incident Name		Geographic Name + "Medical" <i>(Ex: Trout Meadow Medical)</i>
On-Scene Incident Commander		Name of on-scene IC of Incident within an Incident <i>(Ex: TFLD Jones)</i>
Patient Care		Name of Care Provider <i>(Ex: EMT Smith)</i>

**3. INITIAL PATIENT ASSESSMENT:** Complete this section for each patient as applicable (start with the most severe patient)

Patient Assessment: See IRPG page 106

Treatment:

**4. TRANSPORT PLAN:**

Evacuation Location (if different): (Descriptive Location (drop point, intersection, etc.) or Lat. / Long.) Patient's ETA to Evacuation Location:

Helispot / Extraction Site Size and Hazards:

**5. ADDITIONAL RESOURCES / EQUIPMENT NEEDS:**

*Example: Paramedic/EMT, Crews, Immobilization Devices, AED, Oxygen, Trauma Bag, IV/Fluid(s), Splints, Rope rescue, Wheeled litter, HAZMAT, Extrication*

**6. COMMUNICATIONS:** Identify State Air/Ground EMS Frequencies and Hospital Contacts as applicable

Function	Channel Name/Number	Receive (RX)	Tone/NAC *	Transmit (TX)	Tone/NAC *
COMMAND					
AIR-TO-GRND					
TACTICAL					

**7. CONTINGENCY: Considerations:** If primary options fail, what actions can be implemented in conjunction with primary evacuation method? Be thinking ahead.

**8. ADDITIONAL INFORMATION:** Updates/Changes, etc.

**REMEMBER:** Confirm ETA's of resources ordered. Act according to your level of training. Be Alert. Keep Calm. Think Clearly. Act Decisively.