



**INCIDENT ACTION PLAN - COUGAR ROCK COMPLEX - SOUTH OPS**

ID-CTS-000623 Fire Code PN N5HF

Saturday 08-07-2021

Day Shift: 0600-2200

**SAFETY** starts with **YOU**

We are **ALL** accountable for **SAFE** behaviors

**MAJOR HAZARDS ALL DIVISIONS**

**DRIVING HAZARDS:** Narrow roads...dusty roads...sharp corners...wash boards...DEER...shade to sun corners...clean windshields inside and out... rocks, stumps and stobs hidden in the grass and dust along road and in pull outs...public traffic on roads...Slow down and move over for oncoming traffic...Use ground guides!

**Snags:** Lots of large snags and week green trees throughout the forest...size up the area you are in frequently...flag suspect trees and mitigate appropriately..."Hazard Tree Safety" guidelines in IRPG...p. 22.

**COVID:** Keep washing and/or sanitizing your hands and give people space. Maintain 6 feet of social distance whenever possible.

\*\*\*\*Expect the unexpected\*\*\*\*

Watch Out Situation of the Day



15. WIND INCREASES AND/OR CHANGES DIRECTION

**PAY CLOSE ATTENTION!!!**

**18 SITUATIONS THAT SHOUT WATCH OUT!**

- Fire not scouted and sized up
- In country not seen in daylight
- Safety zones and escape routes not identified
- Unfamiliar with weather and local factors influencing fire behavior
- Uninformed on strategy, tactics, and hazards
- Instructions and assignments not clear
- No communication link with crew members or supervisor
- Constructing line without safe anchor point
- Building fireline downhill with fire below
- Attempting frontal assault on fire
- Unburned fuel between you and fire
- Cannot see main fire, not in contact with anyone who can
- On a hillside where rolling material can ignite fuel below
- Weather becoming hotter and dryer
- Wind increases and/or changes direction
- Getting frequent spots across line
- Terrain and fuels make escape to safety zones difficult
- Taking nap near fireline

**Safety Officer: Michael Smith**

## INCIDENT OBJECTIVES (ICS 202)

<b>1. Incident Name:</b>	<b>2. Operational Period: DAY</b>	
COUGAR ROCK COMPLEX	Date/Time From: 08/07/2021 0600      SAT	Date/Time To: 08/07/2021 2200      SAT
<b>3. Objective(s):</b>		
<p>1. Protect human life. Firefighter and public safety will be given the highest priority at all times. Risks to firefighters and the public will be managed by utilizing a risk-based approach to decision making. An emphasis will be placed on exposure to accidents and heat related illness.</p> <p>2. Utilize appropriate fire strategies to minimize fire impacts to residences, commercial properties, critical community infrastructure and natural resources, merchantable timber and critical watersheds.</p> <p>3. Maintain and foster relationships with users of the public lands, landowners, agencies and local communities.</p> <p>4. Effectively manage costs commensurate with the high value assets and resources to be protected and risks.</p> <p>5. Prioritize potential fire suppression and values at risk protection opportunities.</p>		
<b>4. Operational Period Command Emphasis:</b>		
<p>1. The Cougar Rock Complex is committed to following the current CDC guidelines for the Covid-19 precautions and mitigation measures consistent with local protocols. Please adhere to Covid-19 precautions and procedures, particularly at ICP due to confined work spaces.</p> <p>2. Crews will look for opportunities to install containment line on the west side of the Goat Creek fire.</p> <p>3. Hold installed containment lines and go direct when possible.</p>		
<b>General Situational Awareness:</b>		
Maintain focus on the task at hand. Give clear briefings and conduct daily after action reviews to continually improve your situational awareness.		
<b>5. Site Safety Plan Required?</b> Yes <input type="checkbox"/> No <input checked="" type="checkbox"/>		
<b>Approved Site Safety Plan(s) Located</b>		
<b>6. Incident Action Plan</b> (the items checked below are included in this Incident Action Plan):		
<input checked="" type="checkbox"/> ICS 202 <input checked="" type="checkbox"/> ICS 203 <input checked="" type="checkbox"/> ICS 204 <input checked="" type="checkbox"/> ICS 205 <input type="checkbox"/> ICS 205A <input checked="" type="checkbox"/> ICS 206	<input type="checkbox"/> ICS 207 <input type="checkbox"/> ICS 208 <input checked="" type="checkbox"/> ICS 220 <input type="checkbox"/> Map/Chart <input checked="" type="checkbox"/> Weather Forecast/Tides/Currents	<b>Other Attachments:</b> <input checked="" type="checkbox"/> ICS 214 <input checked="" type="checkbox"/> FIRE BEHAVIOR FORECAST <input checked="" type="checkbox"/> MEDICAL INCIDENT REPORT <input type="checkbox"/> _____
<b>7. Prepared by:</b> MATT REED	<b>Position/Title:</b> PSC3(T)	<b>Signature:</b>
<b>8. Approved by Incident Commander:</b>		<b>Signature:</b>
Name:      SHAWN TURNER		
<b>ICS 202</b>	<b>IAP Page</b>	<b>Date/Time:</b> 08/06/2021 2200

## ORGANIZATION ASSIGNMENT LIST (ICS 203)

<b>1. Incident Name:</b>		<b>2. Operational Period: DAY</b>	
COUGAR ROCK COMPLEX		Date/Time From: 08/07/2021 0600 SAT	Date/Time To: 08/07/2021 2200 SAT
<b>3. Incident Commander(s) and Command Staff:</b>		PERSONNEL TIME	AUBRI MURRAY
IC/UC	SHAWN TURNER		
SAFETY OFFICER	MICHAEL SMITH		
INFORMATION OFFICER	JOHN WAMBAUGH		
<b>4. Agency/Organization Representative(s):</b>			
<b>Agency/Organization</b>	<b>Name</b>		
CPTPA	KANE STEINBRUEKER		
IDL	GREG DAWSON		
POTLATCH DELTIC	RICK MCMILLAN		
CLEARWATER CO. SHERIFF	CHRIS GOETZ		
ARMY CORPS. OF ENGINEER	PAUL PENCEL		
USFS - NCF	ANDREW SKOWLAND		
USFS - IPNF	MATT DAVIS		
NEZ PERCE TRIBE LIASON	CHRISTY BRADBURY		
<b>5. Planning Section:</b>			
CHIEF	MATT REED (T)		
STATUS CHECK IN	BOBBIE FLETCHER (T)		
<b>6. Logistics Section:</b>			
CHIEF	CHARLES CHOPLICK		
FACILITIES UNIT	KENDALL NELSON		
GROUND SUPPORT UNIT	CARSON GUBLER DALE APPLEBY (T)		
COMMUNICATIONS UNIT	JAMES KREBS (T)		
COMMUNICATIONS TECHNICIAN	MARCUS E BRINKERHOFF		
BASE CAMP MANAGER	JEFF DIXON - IDL		
<b>7. Operations Section:</b>			
OPERATIONS SECTION CHIEF	BRIAN PLUME		
DIVISION/GROUP	K	WYNN WHITMEYER, TFLD (T)	
DIVISION/GROUP	M	UNSTAFFED	
DIVISION/GROUP	O	UNSTAFFED	
DIVISION/GROUP	T/Q	DAVID INSKEEP	
<b>7b. Air Operations Branch:</b>			
AIR OPS BRANCH DIRECTOR	DAN SULLIVAN		
<b>8. Finance/Administration Section:</b>			
CHIEF	ROBIN REGISTER RICHARD WALLACH		
TIME UNIT	WILL DEVORE (T)		
<b>9. Prepared By:</b>	<b>Name:</b> MATT REED	<b>Position/Title:</b> PSC3(T)	<b>Signature:</b>
ICS 203	IAP Page	<b>Date/Time:</b> 08/06/2021 2015	

# Fire Weather Forecast for IDZ103

IDZ103-072100-  
Palouse/Hells Canyon-  
Clearwater/Nez Perce-

146 PM PDT

Fri Aug 6 2021

.DISCUSSION...

Idaho: A few pop up showers are possible through this evening, diminishing around sunset with a dry and warmer day for Saturday. Westerly winds will continue on the ridgetops overnight but many valleys will become variable before winds pick up again on Saturday afternoon. Considerable showers and cooler temperatures return Saturday night into Sunday with a 70 percent chance of wetting rains in the Clearwater Mountains tapering to a 40 percent chance of wetting rains in the southern Nez Perce NF. By Sunday afternoon, critical fire weather conditions are possible for the southern reaches of fire zones 102 and 103. The main concern will be thunderstorms with gusty outflow winds combining with marginal min Rh. Warm and dry conditions return the second half of next week.

.SATURDAY...

- \* Sky/Weather.....Partly cloudy.
- \* Max Temperature.....85-95 valleys and 70-80 ridges.
- \* Min Humidity.....28-38 percent valleys and 34-44 percent ridges.
- \* 20-Foot Winds.....
  - \* Lower Elevation.....West 5-15 mph.
  - \* Ridge Top.....West 15-25 mph.
- \* Haines Index.....2 very low.
- \* LAL.....1.
- \* CWR (> 0.10 Inch)...0 percent.

.SATURDAY NIGHT...

- \* Sky/Weather.....Partly cloudy. Smoke in the evening.
- \* Min Temperature.....50-60.
- \* Max Humidity.....68-78 percent.
- \* 20-Foot Winds.....
  - \* Lower Elevation.....West 5-10 mph.
  - \* Ridge Top.....West 10-20 mph decreasing to 5-10 mph after midnight.
- \* LAL.....1.
- \* CWR (> 0.10 Inch)...0 percent.

.SUNDAY...

- \* Sky/Weather.....Mostly cloudy. Chance of rain in the morning, then rain showers and chance of thunderstorms in the afternoon.
- \* Max Temperature.....63-73 valleys and 60-65 ridges.
- \* Min Humidity.....25-35 percent valleys and 35-45 percent ridges.
- \* 20-Foot Winds.....
  - \* Lower Elevation.....Variable less than 7 mph.
  - \* Ridge Top.....West 10-20 mph.
- \* Haines Index.....3 very low.
- \* LAL.....3.
- \* CWR (> 0.10 Inch)...50 percent in the Palouse/Hells Canyon...and 80 percent in the Clearwater/Nez Perce.

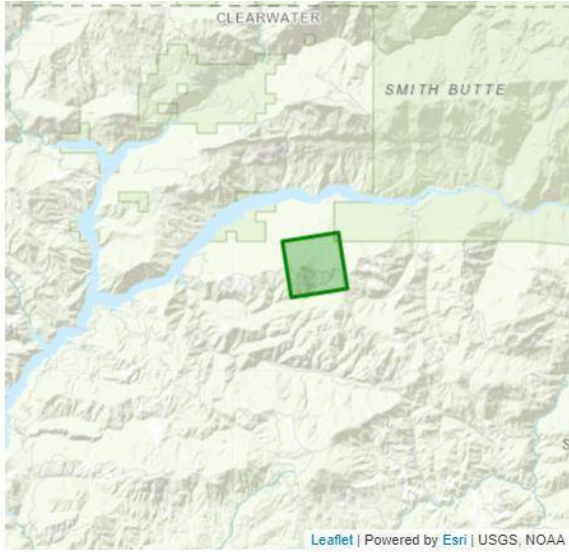
.MONDAY...Partly cloudy with slight chance of rain. Patchy fog. Lows 45-55. Highs 70-80. Southwest winds 10-15 mph.

.TUESDAY...Mostly clear. Lows 50-60. Highs 75-85. Southwest winds 5-10 mph.

.WEDNESDAY...Mostly clear. Lows 55-65. Highs 85-95. Southwest winds 5-10 mph.

.THURSDAY...Mostly clear. Lows 60-70. Highs 85-95.

.FRIDAY...Mostly clear. Lows 60-70. Highs 90-100.



Forecast for 46.8383N -115.8038W (Elev 4369FT)  
 18 miles E of Elk River, ID  
 Issued by National Weather Service [WFO MSO](#)  
 140 PM PDT Fri Aug 06 2021

[Permanent link for this location](#)

[Other data for this location:](#)

Point Forecast Page

Hourly Tabular Forecast

Hourly Weather Graph

Printer friendly link:

Date	Sat Aug 07				Sun Aug 08				Mon Aug 09				Tue Aug 10				Wed Aug 11			
High (°F)	74				59				67				74				80			
Low (°F)	57				53				51				54				59			
Weather			Definite smoke	Chance rain	Likely rain	Likely rain	Chance rain	Slight chance rain	Patchy fog				Patchy fog							
Chance of Precip. (%)	0	5	5	30	65	55	35	20	10	10	0	0	5	5	0	0	0	0	0	0
Rainfall (in)	0.00	0.00	0.00	0.07	0.23	0.13	0.01	0.00	0.00	0.00	0.00	0.00	0.00	0.00	0.00	0.00	0.00	0.00	0.00	0.00
Snowfall (in)	0.0	0.0	0.0	0.0	0.0	0.0	0.0	0.0	0.0	0.0	0.0	0.0	0.0	0.0	0.0	0.0	0.0	0.0	0.0	0.0
Time	5am	11am	5pm	11pm	5am	11am	5pm	11pm	5am	11am	5pm	11pm	5am	11am	5pm	11pm	5am	11am	5pm	11pm
Temperature (°F)	58	64	73	67	57	51	58	56	51	56	67	59	54	63	74	64	59	70	79	70
Dew Point (°F)	46	47	45	47	49	47	39	40	39	44	41	40	39	45	44	43	42	48	46	46
Relative Humidity (%)	63	54	37	49	75	85	49	55	64	65	39	49	56	52	34	47	54	45	31	42
Cloud Cover (%)	25	10	20	50	85	70	60	50	45	30	15	10	30	35	30	35	25	10	10	15
Wind Direction	SW	W	W	SW	SW	W	W	S	S	SW	W	E	E	SW	W	E	E	SW	W	E
Wind Speed (mph)	5	7	8	7	7	7	8	5	3	5	6	3	3	5	6	5	3	2	5	5
Wind Gust (mph)	8	13	17	10	10	9	18	7	6	8	12	6	5	10	14	6	5	5	8	6
Snow Level (ft)	11400	12400	12600	12800	12300	8700	8400	8400	8900	9500	10200	10100	10700	11700	12700	12700	12600	13100	13300	12900

## Benton Butte-8/7/21

Surface Rate of Spread (maximum)	0 . 9 ch/h
Flame Length	0 . 7 ft
Spot Dist from Torching Trees	0 . 1 mi
Probability of Ignition from a Firebrand	33 %

**Division/Group Assignment List (ICS 204 WF)**  
**Controlled Unclassified Information//Basic**

<b>1. Incident Name:</b>				<b>3.</b>		
COUGAR ROCK COMPLEX				<b>Branch:</b>  <b>SOUTH</b>	<b>Division/Group</b>  <b>DIV K</b>	
<b>2. Operational Period: DAY</b>						
Date/Time From: 08/07/2021 0600 SAT		Date/Time To: 08/07/2021 2200 SAT				
<b>4. Operations Personnel</b>						
<b>COUGAR SOUTH OPERATIONS CHIEF</b>		BRIAN PLUME		<b>DIVISION/GROUP SUPERVISOR</b>		WYNN WHITMEYER TFLD (T)
<b>5. Resources Assigned this Period</b>						
Strike Team / Task Force / Resource Designator		LWD	Leader	Number Persons	Drop Off PT./Time	Pick Up PT./Time
C-6 HC2 FRANCO REFORESTATION HANDCREW-R&R 07/27-07/28/21		08/11	NOE FRANCO-GUZMAN	20	HQ/0600	HQ/2200
E-121 ENG4 IDAHO FALLS E-411		08/09		3	HQ/0600	HQ/2200
E-136 ENG4 FLAMECATCHERS E-11		08/10	BRIDGER LARSEN	3		
E-205 ENG6 MOORE'S QUALITY BRUSH 61		08/18	ERIC MOORE	3		
E-208 ENG6 OUTBACK FIREFIGHTING		08/18	LANCE WOLLEBACK	3		
E-97 SKG3 ROCKY MOUNTAIN FIRE		08/09	DON LYLE	2	HQ/0600	HQ/2200
E-149 DOZ2 CRAIG MOUNTAIN DOZER		08/07	HUNTER HASSLESTROM	2	HQ/0600	HQ/2200
E-57 LDFR MILLER TIMBER		08/16	ROBERT RYLAND	2	HQ/0600	HQ/2200
E-204 EXCA AMERICAN PIONEERING		08/18	TREVOR KNIGHT	2		
O-45 EMPF EMPF MEDIC 5		08/07	AYALA RAHM	1	HQ/0600	HQ/2200
O-37 FAL1		08/07	CODY STEINBRUECKER	1	HQ/0600	HQ/2200
EMTF RYAN "DUTCH" VAN SETERS		08/19	DUTCH VAN SETERS	1	HQ/0600	HQ/2200
<b>8. Division/Group Communication Summary</b>						
Function	Channel	RX Frequency N/W	RX Tone/NAC	TX Frequency N/W	TX Tone/NAC	Mode
COMMAND	2	173.9625 N	146.2	164.8625 N	146.2	A
COMMAND	5	159.2700 N		151.2050 N	97.4	A
TACTICAL	8	168.6000 N	146.2	168.6000 N	146.2	A
AIR TO GROUND	14	167.8375 N		167.8375 N		A
<b>9. Prepared By (Resource Unit Leader)</b>			<b>Approved By (Planning Section Chief)</b>		<b>Date</b>	<b>Time</b>
M.REED			MATT REED		08/06/2021	2120

## Division/Group Assignment List (ICS 204 WF)

Controlled Unclassified Information//Basic

<b>1. Incident Name:</b>			<b>3.</b>			
COUGAR ROCK COMPLEX			<b>SOUTH</b>	<b>DIV K</b>		
<b>2. Operational Period:</b> DAY						
Date/Time From: 08/07/2021 0600	SAT	Date/Time To: 08/07/2021 2200	SAT			
<b>4. Operations Personnel</b>						
<b>COUGAR SOUTH OPERATIONS CHIEF</b>		BRIAN PLUME	<b>DIVISION/GROUP SUPERVISOR</b>		WYNN WHITMEYER TFLD (T)	
<b>6. Control Operations/Work Assignments:</b>						
<p>Group Includes Benton Face, Benton Ridge, North Fork Benton, Benton South, and the Butte Creek fires.</p> <p>Task: Patrol and monitor throughout the Division.                  Continue dust abatement on the M and K roads as needed.                  Identify and mitigate hazard trees throughout the division.                  Purpose: Quick identification and suppression at any potential threats to containment line.                  End State: Fire stays within the established containment lines.</p>						
<b>7. Special Instructions:</b>						
<ul style="list-style-type: none"> <li>E-173 Ambulance will stage at Grandad Bridge and be available for all resources on the complex.</li> <li><b>AMBU1 is NOT LINE qualified.</b></li> <li>Watch for logging truck traffic in the DP-225 area south down Bingo Creek Road to Highway 11.</li> <li>Backhaul any unused accountable property.</li> </ul> <p>O-45 EMPF - Ayala Rahm and EMTF Dutch Van Seters are available for all divisions within Cougar South. They will be staged at Kauffman Saddle.</p> <p>PatRick G has an EMT with equipment.                  C-31 Guard Crew has two qualified medics with no equipment.                  E-121 has two EMTs and a paramedic with equipment.</p> <p><b>Division Specific Hazards:</b> Minimize unnecessary fire traffic along Benton Butte Rd to steer clear of log hauling activity. High concentration of bee's within Div K.</p> <p>ALL "INCIDENTS WITHIN AN INCIDENT" WILL GO THROUGH GRANGEVILLE DISPATCH ON CHANNEL 5, CPTPA1.</p>						
<b>8. Division/Group Communication Summary</b>						
Function	Channel	RX Frequency N/W	RX Tone/NAC	TX Frequency N/W	TX Tone/NAC	Mode
COMMAND	2	173.9625 N	146.2	164.8625 N	146.2	A
COMMAND	5	159.2700 N		151.2050 N	97.4	A
TACTICAL	8	168.6000 N	146.2	168.6000 N	146.2	A
AIR TO GROUND	14	167.8375 N		167.8375 N		A
<b>9. Prepared By (Resource Unit Leader)</b>			<b>Approved By (Planning Section Chief)</b>		<b>Date</b>	<b>Time</b>
M.REED			MATT REED		08/06/2021	2120

**Division/Group Assignment List (ICS 204 WF)**  
**Controlled Unclassified Information//Basic**

<b>1. Incident Name:</b>				<b>3.</b>		
COUGAR ROCK COMPLEX				<b>Branch:</b>  <b>SOUTH</b>	<b>Division/Group</b>  <b>DIV T/Q</b>	
<b>2. Operational Period: DAY</b>						
Date/Time From: 08/07/2021 0600 SAT		Date/Time To: 08/07/2021 2200 SAT				
<b>4. Operations Personnel</b>						
<b>COUGAR SOUTH OPERATIONS CHIEF</b>		BRIAN PLUME		<b>DIVISION/GROUP SUPERVISOR</b>		DAVID INSKEEP
<b>5. Resources Assigned this Period</b>						
Strike Team / Task Force / Resource Designator		LWD	Leader	Number Persons	Drop Off PT./Time	Pick Up PT./Time
C-7 HC2 ID 064 FRANCO REFORESTATION HANDCREW		08/12	RAFAEL ALCANTAR-CISNEROS	21	HQ/0600	HQ/2200
C-32 HC2IA PATRICK E		08/11	JOSHUA CHILES	20	HQ/0600	HQ/2200
C-38 HC2IA PATRICK C		08/09	DUSTIN DUFFY	20	HQ/0600	HQ/2200
HC2IA PATRICK G - IDL		08/18	JOE FOWARD	20		
C-31 HC2 GUARD CREW 1 - IDL		08/20	DAVID SCOTT CROY	18		
E-151 ENG5 ID-IDL E 612		08/12	TREVOR L POGUE	5	HQ/0600	HQ/2200
E-94 ENG6 HAGERMAN FIRE 32		08/14	CHANCY COX	3	HQ/0600	HQ/2200
E-198 ENG6 FLASHBACK FIRE E-56		08/11	JEFF HOPKINS	3		
E-199 ENG6 FLASHBACK FIRE E-2		08/11	TREVOR MCWATERS	2		
E-174 DOZ3 MADDEN DOZER		08/17	MOSES MADDEN	2	HQ/0600	HQ/2200
E-98 SKDS ROCKY MOUNTAIN FIRE		08/14	DEVIN MEYER	2	HQ/0600	HQ/2200
E-19 WTS2 RICHARDSON TREE CARE		08/19	DAVID BETZ	1	HQ/0600	HQ/2200
E-50 PCT2 STANTON PUMPER CAT		08/12	DAROLD STANTON	2	HQ/0600	HQ/2200
O-117 HEQB(T)		08/09	BRENT BENSON	1	HQ/0600	HQ/2200
O-183 FMOD UNDERDOG FALLER MODULE		08/17	MARTY POOR	2	HQ/0600	HQ/2200
<b>6. Control Operations/Work Assignments:</b>						
<b>8. Division/Group Communication Summary</b>						
Function	Channel	RX Frequency N/W	RX Tone/NAC	TX Frequency N/W	TX Tone/NAC	Mode
COMMAND	3	171.9250 N	146.2	165.9875 N	146.2	A
COMMAND	5	159.2700 N		151.2050 N	97.4	A
TACTICAL	9	166.7250 N	146.2	166.7250 N	146.2	A
AIR TO GROUND	14	167.8375 N		167.8375 N		A
<b>9. Prepared By (Resource Unit Leader)</b>			<b>Approved By (Planning Section Chief)</b>		<b>Date</b>	<b>Time</b>
M. REED			MATT REED		08/06/2021	1358



## Division/Group Assignment List (ICS 204 WF)

Controlled Unclassified Information//Basic

<b>1. Incident Name:</b>			<b>3.</b>			
COUGAR ROCK COMPLEX			<b>SOUTH</b>		<b>DIV T/Q</b>	
<b>2. Operational Period:</b> DAY						
Date/Time From: 08/07/2021 0600 SAT		Date/Time To: 08/07/2021 2200 SAT				
<b>4. Operations Personnel</b>						
<b>COUGAR SOUTH OPERATIONS CHIEF</b>		BRIAN PLUME		<b>DIVISION/GROUP SUPERVISOR</b>		DAVID INSKEEP
<b>6. Control Operations/Work Assignments:</b>						
Group Includes Benton, Butte Creek, and Lovell Knob fires.						
Task: Mop-up from the K/T division break to Butte Creek Kauffman Saddle east toward Thompson Creek. Backhaul any unused accountable property.						
Purpose: Minimize fire impact to high value timber.						
End State: Fire perimeter stays within the current containment line between Butte Creek and Thompson Creek.						
All contingency lines are completed.						
<b>7. Special Instructions:</b>						
<ul style="list-style-type: none"> <li>E-173 Ambulance will stage at Grandad Bridge and be available for all resources on the complex.</li> <li>AMBU1 is NOT LINE qualified.</li> <li>Watch for logging truck traffic in the DP-225 area south down Bingo Creek Road to Highway 11.</li> <li>Backhaul any unused accountable property.</li> </ul>						
O-45 EMPF - Ayala Rahm and EMTF Dutch Van Seters are available for all divisions within Cougar South. They will be staged at Kauffman Saddle.						
PatRick G has an EMT with equipment.						
C-31 Guard Crew has two qualified medics with no equipment.						
E-121 has two EMTs and a paramedic with equipment.						
Division Specific Hazard: Large rocks are coming down in the West Fork of Butte Creek. Post lookouts and communicate hazards.						
ALL "INCIDENTS WITHIN AN INCIDENT" WILL GO THROUGH GRANGEVILLE DISPATCH ON CHANNEL 5, CPTPA1.						
<b>8. Division/Group Communication Summary</b>						
Function	Channel	RX Frequency N/W	RX Tone/NAC	TX Frequency N/W	TX Tone/NAC	Mode
COMMAND	3	171.9250 N	146.2	165.9875 N	146.2	A
COMMAND	5	159.2700 N		151.2050 N	97.4	A
TACTICAL	9	166.7250 N	146.2	166.7250 N	146.2	A
AIR TO GROUND	14	167.8375 N		167.8375 N		A
<b>9. Prepared By (Resource Unit Leader)</b>			<b>Approved By (Planning Section Chief)</b>		<b>Date</b>	<b>Time</b>
M. REED			MATT REED		08/06/2021	1358

# INCIDENT RADIO COMMUNICATIONS PLAN (ICS 205)

Controlled Unclassified Information//Basic

<b>1. Incident Name:</b>	<b>2. Date/Time Prepared:</b>	<b>3. Operational Period: DAY</b>	
COUGAR ROCK COMPLEX	Date: 08/06/2021 Time: 1430	Date/Time From: 08/07/2021 0600 SAT	Date/Time To: 08/07/2021 2200 SAT

**4. Basic Radio Channel Use:**

Zone Group	Ch #	Function	Channel Name/Trunked Radio System Talkgroup	Assignment	RX Freq	RX Tone/NAC	TX Freq	TX Tone/NAC	Mode (A,D, or M)	Remarks
	1	COMMAND	CMD 1	ALL RESOURCES	169.7500 N	146.2	167.1000 N	146.2	A	COUGAR COMMUNICATIONS
	2	COMMAND	CMD 2	ALL RESOURCES	173.9625 N	146.2	164.8625 N	146.2	A	COUGAR COMMUNICATIONS
	3	COMMAND	CMD 3	ALL RESOURCES	171.9250 N	146.2	165.9875 N	146.2	A	COUGAR COMMUNICATIONS
	4	COMMAND	CMD 4	ALL RESOURCES	171.8875 N	146.2	162.1875 N	146.2	A	COUGAR COMMUNICATIONS
	5	COMMAND	CPTPA 1	ALL RESOURCES	159.2700 N		151.2050 N	97.4	A	GRANGEVILLE DISPATCH FOR I-W-I
	6	TACTICAL	TAC 6	DIV F/H	168.0500 N	146.2	168.0500 N	146.2	A	NIFC TAC
	7	TACTICAL	TAC 7	DIV A/C	168.2000 N	146.2	168.2000 N	146.2	A	NIFC TAC
	8	TACTICAL	TAC 8	DIV K	168.6000 N	146.2	168.6000 N	146.2	A	NIFC TAC
	9	TACTICAL	TAC 9	DIV T/Q	166.7250 N	146.2	166.7250 N	146.2	A	NIFC TAC
	10	COMMAND	CPTPA 2	I/A	153.0650 N		158.1600 N	97.4	A	NOT TO COMMUNICATIONS OR DISPATCH
	11	TACTICAL	TAC 11	DEBRIS REMOVAL	168.2500 N	146.2	168.2500 N	146.2	A	NIFC TAC
	12	TACTICAL	ID EMS	ALL RESOURCES	155.2800 N		155.2800 N	156.7	A	EMS AMBO/AIR UNITS
	13	AIR TO GROUND	IDL A2GS	ALL RESOURCES	151.1450 N		151.1450 N	100.0	A	STATEWIDE AIR TO GROUND
	14	AIR TO GROUND	A/G SOUTH	A/G SOUTH	167.8375 N		167.8375 N		A	NIFC A/G
	15	AIR TO GROUND	A/G NORTH	A/G NORTH	166.6125 N		166.6125 N		A	NIFC A/G
	16	AIR GUARD	AIR GUARD	ALL RESOURCES	168.6250 N		168.6250 N	110.9	A	EMERGENCY

**5. Special Instructions:**

<b>6. Prepared By</b> (Communications Unit Leader)	Name: JIM KREBS	Signature:
ICS 205	IAP Page	Date/Time: 08/06/2021 1430

# AIR OPERATIONS SUMMARY

Prepared by Dan Sullivan AOBD

PREPARED DATE/TIME: 08-06-21

INCIDENT NAME: **Cougar Rock complex**      2.OPERATIONAL PERIOD 08-07-21: START TIME: 0700 END TIME: 2000    SUNRISE:0534 SUNSET: 2006

REMARKS (Safety Notes, Hazards, Air Operations Special Equipment, etc.):  
**NOTE: Heavy Smoke Poor Visibility! Multiple TFR'S in the area!**

4. READY ALERT AIRCRAFT: 7HX or Order medical A/C through GVC dispatch SEE Medical plan	5. TFR #1/1751 Polygon 10,500 MSL	8. FIXED WING	# Avail / Type / Make-Model / FAA N# / Base(s) SEATS AV in GIC order through GVC Dispatch
		ATGS Aircraft	AA-117(4NC) AA-0KQ IN GIC Request through GVC dispatch

6. PERSONNEL	Phone	7. FREQUENCIES	AM	FM
AOBD:Dan Sullivan (NCF Forest)	928-925-2439	Air / Air TFR fix wing	127.1000	
HBMG(T): Rubin Griego	760-718-0688	Air /Air rotor	118.200	
NCF A/C desk	208-983-6803	Cougar Rock A/G Branch-I		166.6125
NCF A/C Coord	208-983-6805	Cougar Rock A/G Branch-II		167.8375
NCF FAO Willy Acton	208-507-0942	A/G IDL		151.1450 TX 100.0
IDF Aviation MGR Kevin Benton	208-290-8969	ID EMS		155.2800 TX156.7
		Air Guard		168.625 TX/RX Tone 110.9

9. Helicopters (Use Additional Sheets as Necessary)

FAA N#	TY	MAKE/MODEL	BASE	AVAIL	START	REMARKS
H-79R	1	S-64E	Correal cr.	0800	0830	H2O MGR D Colarete 208-816-8862
H-103	1	UH-60	CDA	0900	0930	H2O MGR Ed Kassa 208-290-7994
H-112	1	UH-60	CDA	0900	0930	“ “ “
H-7HX	3	Bell-407	S68	0800	0830	Recon/Pax/H2O MGR Griego

MISC. INFORMATION

Approved by Dan Sullivan AOBD

**Medical Plan (ICS 206 WF)**  
**Controlled Unclassified Information//Basic**

<b>1. Incident/Project Name:</b>		<b>2. Operational Period:</b> DAY					
COUGAR ROCK COMPLEX		Date/Time From: 08/07/2021 0600 SAT		Date/Time To: 08/07/2021 2200 SAT			
<b>3. Ambulance Services</b>							
Name	Complete Address	Phone & EMS Frequency		Advanced Life Support (ALS) Yes No			
CLEARWATER COUNTY AMBULANCE	1195 RIVERSIDE AVE OROFINO, ID	(208) 821-0179 (208) 400-1007					
ARMY CORPS OF ENGINEERS	BOAT RESCUE (DWORSHAK RESERVOIR)	(208) 821-0179 (208) 716-0910					
SHERIFF	BOAT RESCUE (DWORSHAK RESERVOIR)	911					
<b>4. Air Ambulance Services</b>							
Name	Phone	Type of Aircraft	Capability				
LIFE FLIGHT LEWISTON / PULLMAN	8002320911		NIGHT VISION, ALS TRANSPORT				
TWO BEAR AIR KALISPELL, MT	4067585585	NIGHT VISION, HOIST,	CAN TRANSPORT TO GROUND UNIT OR PVT				
<b>5. Hospitals</b>							
Name Complete Address	GPS Datum - WGS 84 Coordinate Standard Degrees Decimal Minutes DD° MM.MMM' N - Lat DD° MM.MMM' W - Long	Travel Time		Phone	Helipad		Level of Care Facility
		Air	Ground		Yes	No	
OROFINO HEALTH CLINIC 1055 RIVERSIDE AVE OROFINO, ID	Lat: Long: VHF:		45 MIN	(208) 476-5777		X	BLS / WALK IN, VACCINE BY APPT
CLEARWATER VALLEY 301 CEDAR ST OROFINO, ID	Lat: N 46 29.1897 Long: W 116 15.5887 VHF:		45 MIN	(208) 476-4555	X		CRITICAL ACCESS, COVID TEST
ST. JOSEPH REGIONAL MED 1250 IDAHO ST LEWISTON, ID	Lat: N 46 25.016 Long: W 117 01.449 VHF:		1 HR 15 MIN	(208) 743-2511	X		LVL 3 TRAUMA CENTER
KOOTENAI CLINIC 2003 KOOTENAI HEALTH WAY COEUR D'ALENE, ID	Lat: N 47 41.8026 Long: W 116 47.7669 VHF:		3 HR 45 MIN	(208) 625-5707	X		LVL 3 TRAUMA CENTER
<b>8. Prepared By (Medical Unit Leader)</b>		<b>9. Date/Time</b>		<b>10. Reviewed By (Safety Officer)</b>		<b>11. Date/Time</b>	
				SAFETY		08/06/2021 2100	

**Medical Plan (ICS 206 WF)**  
**Controlled Unclassified Information//Basic**

<b>1. Incident/Project Name:</b>		<b>2. Operational Period:</b> DAY					
COUGAR ROCK COMPLEX		Date/Time From: 08/07/2021 0600 SAT		Date/Time To: 08/07/2021 2200 SAT			
<b>5. Hospitals</b>							
Name Complete Address	GPS Datum - WGS 84 Coordinate Standard Degrees Decimal Minutes DD° MM.MMM' N - Lat DD° MM.MMM' W - Long	Travel Time		Phone	Helipad		Level of Care Facility
		Air	Ground		Yes	No	
HARBORVIEW BURN CENTER  395 9TH AVE SEATTLE, WA	Lat: N 47 36.2287	7 HR	(206) 520-5000	X		LVL 1 TRAUMA & BURN CENTER	
	Long: W 122 19.3937						
	VHF:						
<b>6. Area Location Capability</b>							
<b>Branch Division/Group</b>							
COUGAR SOUTH ALL DIVISIONS	EMS Responders & Capability:	EMPF RAHM (MEDIC 5), EMPF DUTCH/E-173 AMBU1 - (TRANSPORT)					
	Equipment Available on Scene:	ALS					
	Medical Emergency Channel:	5 - CPTPA 1					
	ETA for Ambulance to Scene:						
	Air:						
	Ground:	45 MIN					
	Approved Helispot:						
	Lat:	N 46 37.7781					
	Long:	W 115 48.5751					
<b>7. Remote Camp Location(s)</b>							
<b>Name &amp; Location</b>							
	Point Of Contact:						
	EMS Responders & Capability						
	Equipment Available on Scene:						
	Medical Emergency Channel:						
	ETA for Ambulance To Scene:						
	Air:						
	Ground:						
	Approved Helispot:						
	Lat:						
	Long:						
<b>8. Prepared By (Medical Unit Leader)</b>		<b>9. Date/Time</b>	<b>10. Reviewed By (Safety Officer)</b>		<b>11. Date/Time</b>		
			SAFETY		08/06/2021 2100		

# How to DEMOB

## Finance Unit needs the following before DEMOB:

-All CTR's/Shift Tickets signed

-Evaluations **with Resource Order number** are mandatory for:

- Forest Service AD's
- Contract Crews (excluding IDL preseason contracts)
- VIPR contracts

-Vehicle inspections (pre and post)

-Any required paperwork (casual hire document, STARS or W-9)

**If you have questions call Robin at 570-404-6091 or Will at 717-580-6728 or talk to one of us at Headquarters briefing.**

## DEMOB Unit needs the following before DEMOB:

-Signed Demobilization Check-out form from FOB

- Supply
- Communications
- Facilities
- Ground Support

**If you have questions for Check-in/DEMOB**

**call Bobbie at 570-367-1465 or her find after Headquarters briefing**

**\*\*Any outstanding issues brought to your attention MUST be resolved before DEMOB**



**MEDICAL PLAN (ICS 206 WF)**  
Controlled Unclassified Information//Basic

**Medical Incident Report**

**FOR A NON-EMERGENCY INCIDENT, WORK THROUGH CHAIN OF COMMAND TO REPORT AND TRANSPORT INJURED PERSONNEL AS NECESSARY.**

**FOR A MEDICAL EMERGENCY: IDENTIFY ON SCENE INCIDENT COMMANDER BY NAME AND POSITION AND ANNOUNCE "MEDICAL EMERGENCY" TO INITIATE RESPONSE FROM IMT COMMUNICATIONS/DISPATCH.**  
*Ex: Sprains, strains, minor heat-related illness.*

**Use the following items to communicate situation to communications/dispatch.**

- 1. CONTACT COMMUNICATIONS / DISPATCH** (Verify correct frequency prior to starting report)  
*Ex: "Communications: Div. Alpha. Stand-by for Emergency Traffic."*
- 2. INCIDENT STATUS:** Provide incident summary (including number of patients) and command structure.  
*Ex: "Communications, I have a Red priority patient, unconscious, struck by a falling tree. Requesting air ambulance to Forest Road 1 at (Lat/Long.) This will be the Trout Meadow Medical, IC is TFLD Jones. EMT Smith is providing medical care."*

Severity of Emergency / Transport Priority	<input type="checkbox"/> <b>RED/PRIORITY 1 Life or limb threatening injury or illness. Evacuation need is IMMEDIATE</b> <i>Ex: Unconscious, difficulty breathing, bleeding severely, 2° - 3° burns more than 4 palm sizes, heat stroke, disoriented.</i> <input type="checkbox"/> <b>YELLOW/PRIORITY 2 Serious Injury or illness. Evacuation may be DELAYED if necessary.</b> <i>Ex: Significant trauma, unable to walk, 2° - 3° burns not more than 1-3 palm sizes.</i> <input type="checkbox"/> <b>GREEN/PRIORITY 3 Minor Injury or illness. Non-Emergency transport</b>
Nature of Injury or Illness & Mechanism of Injury	Brief Summary of Injury or Illness <i>(Ex: Unconscious, Struck by Falling Tree)</i>
Transport Request	Air Ambulance / Short Haul/Hoist Ground Ambulance / Other
Patient Location	Descriptive Location & Lat. / Long. (WGS84)
Incident Name	Geographic Name + "Medical" <i>(Ex: Trout Meadow Medical)</i>
On-Scene Incident Commander	Name of on-scene IC of Incident within an Incident <i>(Ex: TFLD Jones)</i>
Patient Care	Name of Care Provider <i>(Ex: EMT Smith)</i>

**3. INITIAL PATIENT ASSESSMENT:** Complete this section for each patient as applicable (start with the most severe patient)

Patient Assessment: See IRPG Page 106

Treatment:

**4. TRANSPORT PLAN:**

Evacuation Location (if different): (Descriptive Location (drop point, intersection, etc.) or Lat. /Long.) Patient's ETA to Evacuation Location:

Helispot / Extraction Site Size and Hazards:

**5. ADDITIONAL RESOURCES / EQUIPMENT NEEDS:**

*Example: Paramedic/EMT, Crews, Immobilization Devices, AED, Oxygen, Trauma Bag, IV/Fluid(s), Splints, Rope rescue, Wheeled litter, HAZMAT, Extrication*

**6. COMMUNICATIONS: Identify State Air/Ground EMS Frequencies and Hospital Contacts as applicable**

Function	Channel Name/Number	Receive (Rx)	Tone/NAC *	Transmit (Tx)	Tone/NAC *
COMMAND					
AIR-TO-GRND					
TACTICAL					

**7. CONTINGENCY: Considerations:** If primary options fail, what actions can be implemented in conjunction with primary evacuation method? Be thinking ahead.

**8. ADDITIONAL INFORMATION:** *Updates/Changes, etc.*

**REMEMBER:** Confirm ETA's of resources ordered. Act according to your level of training. Be Alert. Keep Calm. Think Clearly. Act Decisively.