



INCIDENT ACTION PLAN - COUGAR ROCK COMPLEX

ID-CTS-000623 Fire Code PN N5HF

Thursday 08-12-2021

Day Shift: 0600-2200

SAFETY DOESN'T HAPPEN BY ACCIDENT

HAZARD TREE – SITUATIONAL AWARENESS

- Snags are dead, standing trees without leaves or needles in the crowns and present a significant threat to forest worker safety. Snags may burn through more quickly than green trees and can fall without warning.
- Live, structurally compromised green trees weakened by insects, disease, weather, fire, and age can also fall without notice.
- Sawyers and crews operate with increased risk from hazard trees during low visibility or night operations. Night saw operations should include discussions involving minimizing falling operations due to reduced visibility and the reduction of situational awareness of immediate surroundings.

Environmental conditions that increase risk from hazard trees

- Strong or gusty winds from storm cells.
- Air operations - water or retardant drops, rotor wash from helicopters.
- Steep slopes with rolling material.
- Timbered areas that have been burning for an extended period.
- Fire weakened timber.
- Reduced visibility from smoke, fog or darkness.

Prepared by:
SOF2: Jeff Handel

Anne Veseth – Snag Fatality 8/12/12



In Memory of Anne Veseth

April 5, 1992 to August 12, 2012

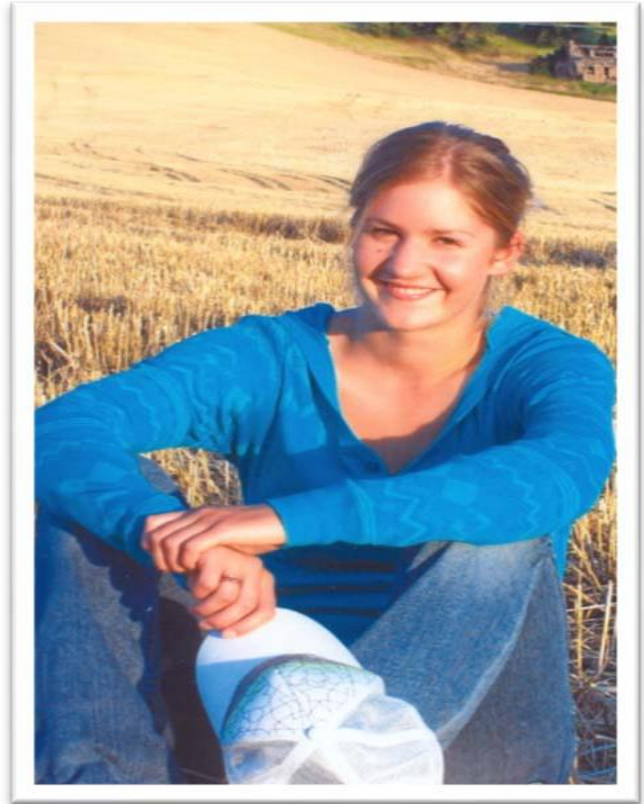
Anne was the youngest of four children born to Roger and Claire Veseth. She grew up in Moscow, Idaho and was grateful to be raised in the midst of the Palouse Hills. The death of her father in 2003 profoundly affected her life. Throughout high school, Anne played basketball, rode horses, enjoyed social outings with friends, and practiced breakdancing. In 2009, she was awarded Junior Miss second runner-up.

Anne attended Lewis-Clark State College, where she graduated in May 2012 with her associate's degree in auto mechanics and had planned to pursue her bachelor's degree. Anne worked

for the U.S. Forest Service as a firefighter for two seasons on the North Fork Ranger District where she was much loved by her co-workers and known for her dedicated work ethic. She was a conscientious employee who went above and beyond expectations.

On August 12, 2013, Anne was working as a crewmember on E-31 on the Steep Corner Fire on the North Fork Ranger District Clearwater National Forest, Idaho. E-31 crewmembers were constructing line in Steep Creek. At 1230 they took a break to allow a Faller to clear three snags out ahead of them. While watching the faller, Anne and a crewmember saw a snag across the drainage start to fall. He shouted out a warning and everyone started running. The dead snag fell into a live Cedar, which was then uprooted and fell striking Anne and causing her death.

Anne was, and will always be deeply loved by those who knew her, and her death leaves an immense hole in many hearts.



INCIDENT OBJECTIVES (ICS 202)

1. Incident Name:	2. Operational Period: DAY	
COUGAR ROCK COMPLEX	Date/Time From: 08/12/2021 0600 THU	Date/Time To: 08/12/2021 2200 THU
3. Objective(s):		
<p>1. Firefighter and public safety will be given the highest priority at all times. Risks to firefighters and the public will be managed by utilizing a risk-based approach to decision making. An emphasis will be placed on exposure to accidents and heat related illness.</p> <p>2. Utilize appropriate fire suppression strategies to minimize fire impacts to structures, natural resources, merchantable timber and critical watersheds.</p> <p>3. Maintain and foster relationships with users of public lands, landowners, cooperating agencies and local communities to ensure timely information flow, allowing for mindful interactions.</p> <p>4. Effectively manage costs commensurate with values at risk in order to meet host agency objectives.</p>		
4. Operational Period Command Emphasis:		
<p>1. The Cougar Rock Complex is committed to following the current CDC guidelines and local protocols for COVID-19 precautions and mitigation measures. Please adhere to COVID-19 precautions and procedures, particularly at ICP due to confined work spaces.</p> <p>2. Crews will construct direct containment line on the east and west flanks of the Goat Creek Fire.</p> <p>3. Crews will monitor and improve containment lines on the Scott, Butte Creek, and Benton Ridge Fires.</p> <p>4. Monitor fire activity and progression on the north edges of Butte Creek and Benton Ridge Fires.</p>		
General Situational Awareness:		
Maintain focus on the task at hand. Give clear briefings and conduct daily after action reviews to continually improve your situational awareness.		
5. Site Safety Plan Required? Yes <input type="checkbox"/> No <input checked="" type="checkbox"/>		
Approved Site Safety Plan(s) Located		
6. Incident Action Plan (the items checked below are included in this Incident Action Plan):		
<input checked="" type="checkbox"/> ICS 202 <input checked="" type="checkbox"/> ICS 203 <input checked="" type="checkbox"/> ICS 204 <input checked="" type="checkbox"/> ICS 205 <input type="checkbox"/> ICS 205A <input checked="" type="checkbox"/> ICS 206	<input type="checkbox"/> ICS 207 <input type="checkbox"/> ICS 208 <input checked="" type="checkbox"/> ICS 220 <input type="checkbox"/> Map/Chart <input checked="" type="checkbox"/> Weather Forecast/Tides/Currents	Other Attachments: <input checked="" type="checkbox"/> ICS 214 <input type="checkbox"/> FIRE BEHAVIOR FORECAST <input checked="" type="checkbox"/> MEDICAL INCIDENT REPORT <input type="checkbox"/> _____
7. Prepared by: MATT REED	Position/Title: PSC3(T)	Signature:
8. Approved by Incident Commander:		Signature:
Name: SHAWN TURNER		
ICS 202	IAP Page	Date/Time: 08/11/2021 1530

ORGANIZATION ASSIGNMENT LIST (ICS 203)

1. Incident Name:		2. Operational Period: DAY	
COUGAR ROCK COMPLEX		Date/Time From: 08/12/2021 0600 THU	Date/Time To: 08/12/2021 2200 THU
3. Incident Commander(s) and Command Staff:		7b. Air Operations Branch:	
IC/UC	SHAWN TURNER	AIR OPS BRANCH DIRECTOR	WILLY ACTON
SAFETY OFFICER	JEFF HANDEL	8. Finance/Administration Section:	
INFORMATION OFFICER	JOHN WAMBAUGH	CHIEF	ROBIN REGESTER RICHARD WALLACH
4. Agency/Organization Representative(s):		TIME UNIT	WILL DEVORE (T)
Agency/Organization	Name		
CPTPA	KANE STEINBRUEKER		
IDL	GREG DAWSON		
POTLATCH DELTIC	RICK MCMILLAN		
CLEARWATER CO. SHERIFF	CHRIS GOETZ		
ARMY CORPS. OF ENGINEER	PAUL PENCEL		
USFS - NCF	ANDREW SKOWLAND		
USFS - IPNF	MATT DAVIS		
NEZ PERCE TRIBE LIASON	CHRISTY BRADBURY		
5. Planning Section:			
CHIEF	MATT REED (T)		
STATUS CHECK IN	HEATHER KERR		
6. Logistics Section:			
CHIEF	CHARLES CHOPLICK		
FACILITIES UNIT	KEN HABERL (COBBLERS)		
GROUND SUPPORT UNIT	DALE APPLEBY (T)		
COMMUNICATIONS UNIT	JAMES KREBS (T)		
COMMUNICATIONS TECHNICIAN	MARCUS E BRINKERHOFF		
RADIO OPERATOR	JESSICA MARUNOWSKI		
BASE CAMP MANAGER	JEFF DIXON - IDL (COBBLERS)		
7. Operations Section:			
OPERATIONS SECTION CHIEF	BRIAN PLUME		
DIVISION/GROUP	A/C	JASON JOHNSON (T)	
DIVISION/GROUP	F	GREG REESE, TFLD	
DIVISION/GROUP	H	LEWIS HOLT (T) SCOTT AFFELDT (T)	
DIVISION/GROUP	K/T/Q	BRADLEY SHOEMAKER WYNN WHITMEYER, TFLD (T)	
DIVISION/GROUP	M	UNSTAFFED	
DIVISION/GROUP	O	UNSTAFFED	
DIVISION/GROUP	HEAVY EQUIPMENT	DAVID GREGORY (T)	
DIVISION/GROUP	GOAT GROUP	DAVE CROUSSER	
9. Prepared By:	Name: MATT REED	Position/Title: PSC3(T)	Signature:
ICS 203	IAP Page	Date/Time: 08/11/2021 0800	

Fire Weather Forecast for IDZ103

IDZ103-122115-
Palouse/Hells Canyon-
Clearwater/Nez Perce-

201 PM PDT

Wed Aug 11 2021

.DISCUSSION...

Idaho: Hot and dry through the weekend. Westerly winds this afternoon will diminish around sunset. Easterly winds of 5 to 15 mph are still expected Thursday night mainly across the upper ridges of the Clearwater Mountains and possibly a few higher benches in the Palouse region. The next chance for precipitation will be over the weekend as monsoon moisture works northward. Strong gusty west winds are anticipated area-wide on Sunday. Expect a cooler pattern with a chance of showers early next week.

.THURSDAY...

- * Sky/Weather.....Mostly sunny. Haze.
- * Max Temperature.....93-103 valleys and 80-90 ridges.
- * Min Humidity.....13-23 percent.
- * 20-Foot Winds.....
- * Lower Elevation.....Variable less than 7 mph.
- * Ridge Top.....East 5-10 mph.
- * Haines Index.....3 very low.
- * LAL.....1.
- * CWR (> 0.10 Inch)...0 percent.

.THURSDAY NIGHT...

- * Sky/Weather.....Partly cloudy. Haze.
- * Min Temperature.....58-68.
- * Max Humidity.....41-51 percent.
- * 20-Foot Winds.....
- * Lower Elevation.....North 5-10 mph.
- * Ridge Top.....Northeast 5-15 mph.
- * LAL.....1.
- * CWR (> 0.10 Inch)...0 percent.

.FRIDAY...

- * Sky/Weather.....Mostly sunny. Haze.
- * Max Temperature.....98-108 valleys and 80-90 ridges.
- * Min Humidity.....10-20 percent.
- * 20-Foot Winds.....
- * Lower Elevation.....Becoming upslope/upvalley 4-8 mph late in the afternoon.
- * Ridge Top.....Southeast 5-15 mph decreasing to up to 5 mph late in the morning, then becoming northwest 5-10 mph in the afternoon.
- * Haines Index.....5 moderate.
- * LAL.....1.
- * CWR (> 0.10 Inch)...0 percent.

.SATURDAY...Mostly clear. Haze. Lows 65-75. Highs 90-100. West winds 5-10 mph.

.SUNDAY...Partly cloudy with a slight chance of showers and thunderstorms. Haze. Lows 65-75. Highs 85-95. Southwest winds 15-25 mph.

.MONDAY...Not as warm. Partly cloudy with slight chance of rain. Lows 60-70. Highs 75-85. West winds 15-25 mph.

.TUESDAY...Partly cloudy. Slight chance of rain. Lows 50-60. Highs 70-80.

.WEDNESDAY...Partly cloudy. Slight chance of rain. Lows 50-60. Highs 75-85.

Division/Group Assignment List (ICS 204 WF)
Controlled Unclassified Information//Basic

1. Incident Name:			3.			
COUGAR ROCK COMPLEX			Branch:		Division/Group	
2. Operational Period: DAY					A/C	
Date/Time From: 08/12/2021 0600 THU		Date/Time To: 08/12/2021 2200 THU				
4. Operations Personnel						
OPERATIONS CHIEF		BRIAN PLUME		DIVISION/GROUP SUPERVISOR		O-221 JASON JOHNSON (LWD 8/21)
5. Resources Assigned this Period						
Strike Team / Task Force / Resource Designator		LWD	Leader	Number Persons	Drop Off PT./Time	Pick Up PT./Time
E-138 ENG6 BALDWIN FORESTRY		08/25		3	COBBLER SPIKE/0600	COBBLER SPIKE/2200
E-114 ENG6 RETURNING HEROS		08/22	GABRIEL CORDOVA	4	COBBLER SPIKE/0600	COBBLER SPIKE/2200
6. Control Operations/Work Assignments:						
<p>Task: Continue mop-up, secure, and patrol the fire perimeter. // Monitor slash pile at Breakfast Creek. Purpose: Reduce the loss of high value timber. // Minimize response time to ignitions in the slash pile. End State: The Scott fire is fully contained. // Any fire in the slash pile is quickly detected and contained.</p>						
7. Special Instructions:						
<p>EMTF Ian Godfrey will be on DIV F. EMPF Luis "Mac" Marin will be on DIV H. AMBU 2 will be staged at DP 140. C-49 PatRick G has an EMT with equipment. C-31 Guard Crew has two EMTs and a paramedic with equipment.</p> <p>All I-W-I's will be run through Grangeville Dispatch</p> <p>Division Specific Hazard: Fire Weakened Trees/Snags: Be alert for hazard trees, both green and burned.</p>						
8. Division/Group Communication Summary						
Function	Channel	RX Frequency N/W	RX Tone/NAC	TX Frequency N/W	TX Tone/NAC	Mode
COMMAND	4 CMD 4	171.8875 N	146.2	162.1875 N	146.2	A
TACTICAL	11 TAC 11	168.2500 N	146.2	168.2500 N	146.2	A
AIR TO GROUND	15 A/G N	166.6125 N		166.6125 N		A
9. Prepared By (Resource Unit Leader)			Approved By (Planning Section Chief)		Date	Time
M. REED			MATT REED		08/11/2021	1250

Division/Group Assignment List (ICS 204 WF)
Controlled Unclassified Information//Basic

1. Incident Name:				3.		
COUGAR ROCK COMPLEX				Branch:	Division/Group DIV F	
2. Operational Period: DAY						
Date/Time From: 08/12/2021 0600 THU		Date/Time To: 08/12/2021 2200 THU				
4. Operations Personnel						
OPERATIONS CHIEF		BRIAN PLUME		DIVISION/GROUP SUPERVISOR		O-228 GREG REESE, TFLD (LWD 8/19)
5. Resources Assigned this Period						
Strike Team / Task Force / Resource Designator		LWD	Leader	Number Persons	Drop Off PT./Time	Pick Up PT./Time
O-196 TFLD-T PLOCHER		08/14	JODI PLOCHER	1	COBBLER SPIKE/0600	COBBLER SPIKE/2200
C-30 HC2 GREYBACK 21		08/12	ROBERT LARKIN	20	COBBLER SPIKE/0600	COBBLER SPIKE/2200
C-27 HC2I PATRICK FOXTROT		08/18	PHIL RIDGLEY	20	COBBLER SPIKE/0600	COBBLER SPIKE/2200
E-133 ENG5 ID-IDL E 2151		08/12	ZACH POHL	6	COBBLER SPIKE/0600	COBBLER SPIKE/2200
E-134 ENG3 HAILEY - E512		08/13	MARTIN PALLAS	3	COBBLER SPIKE/0600	COBBLER SPIKE/2200
E-131 UCON ENGINE (CREW SWAP 8/14)		08/13	SAWYER MAUPIN	2	COBBLER SPIKE/0600	COBBLER SPIKE/2200
E-137 ENG6 SCHOLL FIRE		08/17	LISA WEHMEYER	3	COBBLER SPIKE/0600	COBBLER SPIKE/2200
E-139 ENG6 ALLEN FIRE		08/13	PETER ALLEN	3	COBBLER SPIKE/0600	COBBLER SPIKE/2200
E-18 WTS2 SWANSON LOGGING		08/22	DERRICK WINSLOW	1	COBBLER SPIKE/0600	COBBLER SPIKE/2200
E-169 WTS1 LOPEZ LIVESTOCK		08/20	MIKE LOPEZ	1	COBBLER SPIKE/0600	COBBLER SPIKE/2200
E-214 SKG3 MILLER SKIDGINE		08/18	MICHAEL HONEYWELL	2	COBBLER SPIKE/0600	COBBLER SPIKE/2200
E-40 DOZ2 RAY DAY JR.		08/21	JOE MONTAMBO	1	COBBLER SPIKE/0600	COBBLER SPIKE/2200
E-9 EXCA QUALITY EXCAVATION		08/14	DOUG JOHNSON	1	COBBLER SPIKE/0600	COBBLER SPIKE/2200
8. Division/Group Communication Summary						
Function	Channel	RX Frequency N/W	RX Tone/NAC	TX Frequency N/W	TX Tone/NAC	Mode
COMMAND	4 CMD 4	171.8875 N	146.2	162.1875 N	146.2	A
TACTICAL	6 TAC 6	168.0500 N	146.2	168.0500 N	146.2	A
AIR TO GROUND	15 A/G N	166.6125 N		166.6125 N		A
9. Prepared By (Resource Unit Leader)			Approved By (Planning Section Chief)		Date	Time
M. REED			MATT REED		08/11/2021	1250

Division/Group Assignment List (ICS 204 WF)
Controlled Unclassified Information//Basic

1. Incident Name:				3.		
COUGAR ROCK COMPLEX				Branch:	Division/Group	
2. Operational Period: DAY						
Date/Time From: 08/12/2021 0600 THU		Date/Time To: 08/12/2021 2200 THU		DIV F		
4. Operations Personnel						
OPERATIONS CHIEF BRIAN PLUME		DIVISION/GROUP SUPERVISOR O-228 GREG REESE, TFLD (LWD 8/19)				
5. Resources Assigned this Period						
Strike Team / Task Force / Resource Designator	LWD	Leader	Number Persons	Drop Off PT./Time	Pick Up PT./Time	
O-222 FAL1 ANDERSON LOGGING	08/19	BRAD FROST	1	COBBLER SPIKE/0600	COBBLER SPIKE/2200	
O-43 FAL1 SCHOLL FIRE (R&R 8/10-8/13)	08/27	JAMES DEMASTUS	1	COBBLER SPIKE/0600	COBBLER SPIKE/2200	
O-183 FMOD UNDERDOG FALLING	08/17	MARTY POOR	2	COBBLER SPIKE/0600	COBBLER SPIKE/2200	
O-195 FAL1 LANGSTON (R&R 8/10-8/11)	08/25	MIKE LANGSTON	1	COBBLER SPIKE/0600	COBBLER SPIKE/2200	
O-181 EMTF GODFREY	08/21	IAN GODFREY	1	COBBLER SPIKE/0600	COBBLER SPIKE/2200	
E-164 AMBU 2	08/21	TY DRALLE	2	COBBLER SPIKE/0600	COBBLER SPIKE/2200	
6. Control Operations/Work Assignments:						
<p>Task: Implement both direct fireline construction on the west flank of the Goat Fire. Utilize air resources when appropriate. Purpose: Reduce the loss of high value timber. End State: Goat Creek fire is contained and fire does not impact the outfitter camp structures.</p>						
7. Special Instructions:						
<p>-- Utilize LCES. -- Implement line construction north from the Hobbit Fire. -- Disengage from cedar snag areas when winds are 5 mph or greater.</p> <p>EMTF Ian Godfrey will be on DIV F. EMPF Luis "Mac" Marin will be on DIV H. AMBU 2 will be staged at DP 140. C-49 PatRick G has an EMT with equipment. C-31 Guard Crew has two EMTs and a paramedic with equipment.</p> <p>All IWI's will be run through Grangeville Dispatch.</p> <p>Specific Hazard: Maintain situational awareness and establish LCES as the Goat Fire is still active. Stay alert for fire weakened trees and snags.</p>						
8. Division/Group Communication Summary						
Function	Channel	RX Frequency N/W	RX Tone/NAC	TX Frequency N/W	TX Tone/NAC	Mode
COMMAND	4 CMD 4	171.8875 N	146.2	162.1875 N	146.2	A
TACTICAL	6 TAC 6	168.0500 N	146.2	168.0500 N	146.2	A
AIR TO GROUND	15 A/G N	166.6125 N		166.6125 N		A
9. Prepared By (Resource Unit Leader)		Approved By (Planning Section Chief)		Date	Time	
M. REED		MATT REED		08/11/2021	1250	

Division/Group Assignment List (ICS 204 WF)
Controlled Unclassified Information//Basic

1. Incident Name:				3.		
COUGAR ROCK COMPLEX				Branch:	Division/Group	
2. Operational Period: DAY						
Date/Time From: 08/12/2021 0600 THU		Date/Time To: 08/12/2021 2200 THU		DIV H		
4. Operations Personnel						
OPERATIONS CHIEF BRIAN PLUME		DIVISION/GROUP SUPERVISOR O-224 LEWIS HOLT (LWD 8/12) (T) O-220 SCOTT AFFELDT (LWD 8/21)				
5. Resources Assigned this Period						
Strike Team / Task Force / Resource Designator	LWD	Leader	Number Persons	Drop Off PT./Time	Pick Up PT./Time	
C-7 HC2 ID 064 FRANCO	08/12	RAFAEL ALCANTAR-CISNEROS	21	COBBLER SPIKE/0600	COBBLER SPIKE/2200	
C-37 HC2I PATRICK DELTA	08/12	LEVI MILLER	20	COBBLER SPIKE/0600	COBBLER SPIKE/2200	
C-49 HC2I PATRICK GOLF	08/18	JOE FOWARD	20	COBBLER SPIKE/0600	COBBLER SPIKE/2200	
C-31 HC2 ID NATIONAL GUARD CREW 1	08/17	CODY GRIFFEN	19	COBBLER SPIKE/0600	COBBLER SPIKE/2200	
E-98 SKDS SKIDGINE	08/13	DEVIN MEYER	2	COBBLER SPIKE/0600	COBBLER SPIKE/2200	
E-96 SKG3 CALDBECK LOGGING	08/21	STEVE CALDBECK	2	COBBLER SPIKE/0600	COBBLER SPIKE/2200	
E-39 FEL1 RAY DAY JR LOGGING	08/21	JOSEPH WORKMAN	1	COBBLER SPIKE/0600	COBBLER SPIKE/2200	
O-178 EMPF MARIN	08/22	LUIS "MAC" MARIN	1	COBBLER SPIKE/0600	COBBLER SPIKE/2200	
6. Control Operations/Work Assignments:						
<p>Task: Scout and construct access routes on the east flank of the Goat Fire. Maintain and monitor pumps, pumpkins, sprinkler systems and hoselays on the division and around My Blue Heaven camp.</p> <p>Purpose: Create access routes for crews securing and mopping up east flank of Goat Fire. Reduce the loss of high value timber. Protect structures.</p> <p>End State: The Scott fire is fully contained and structures are protected.</p>						
7. Special Instructions:						
<p>Utilize LCES. Disengage from cedar snag areas when winds are 5mph or greater.</p> <p>AMBU 2 will be staged at DP 140. EMTF Ian Godfrey will be on DIV F. EMPF Luis "Mac" Marin will be on DIV H.</p> <p>C-49 PatRick G has an EMT with equipment.</p> <p>C-31 Guard Crew has two EMTs and a paramedic with equipment.</p> <p>All IWI's will be run through Grangeville Dispatch / Elk Butte repeater.</p> <p>Division Specific Hazard: Fire Weakened Trees/Snags: Be alert for hazard trees, both green and burnt.</p>						
8. Division/Group Communication Summary						
Function	Channel	RX Frequency N/W	RX Tone/NAC	TX Frequency N/W	TX Tone/NAC	Mode
COMMAND	4 CMD 4	171.8875 N	146.2	162.1875 N	146.2	A
TACTICAL	7 TAC 7	168.2000 N	146.2	168.2000 N	146.2	A
AIR TO GROUND	15 A/G N	166.6125 N		166.6125 N		A
9. Prepared By (Resource Unit Leader)		Approved By (Planning Section Chief)		Date	Time	
M. REED		MATT REED		08/11/2021	1255	

Division/Group Assignment List (ICS 204 WF)
Controlled Unclassified Information//Basic

1. Incident Name:				3.		
COUGAR ROCK COMPLEX				Branch:	Division/Group DIV K/T/Q	
2. Operational Period: DAY						
Date/Time From: 08/12/2021 0600 THU		Date/Time To: 08/12/2021 2200 THU				
4. Operations Personnel						
OPERATIONS CHIEF		BRIAN PLUME		DIVISION/GROUP SUPERVISOR		BRADLEY SHOEMAKER (LWD 8/22) WYNN WHITMEYER, TFLD (LWD 8/17)
5. Resources Assigned this Period						
Strike Team / Task Force / Resource Designator		LWD	Leader	Number Persons	Drop Off PT./Time	Pick Up PT./Time
E-151 ENG5 ID-IDL E 612 - IDL		08/12	TREVOR L POGUE	5	HQ/0600	HQ/2200
E-199 ENG6 FLASHBACK (R&R 8/11-8/12)		08/26	TREVOR MCWATERS	2	HQ/0600	HQ/2200
E-208 ENG6 OUTBACK FIREFIGHTING		08/13	LANCE WOLLEBACK	3	HQ/0600	HQ/2200
E-94 ENG6 HAGERMAN FIRE 32		08/14	CHANCEY COX	3	HQ/0600	HQ/2200
E-205 ENG6 MOORE'S QUALITY BRUSH 61		08/18	ERIC MOORE	3	HQ/0600	HQ/2200
E-149 DOZ2 CRAIG MOUNTAIN DOZER		08/24	HUNTER HASSESTROM	2	HQ/0600	HQ/2200
E-19 WTS2 RICHARDSON TREE CARE		08/19	DAVID BETZ	1	HQ/0600	HQ/2200
E-140 WTS2 JARED LEWIS		08/20	DONALD MIELKE	1	HQ/0600	HQ/2200
E-204 EXCA AMERICAN PIONEERING		08/18	TREVOR KNIGHT	2	HQ/0600	HQ/2200
O-259 EMTF (DUTCH MEDIC)		08/19	RYAN "DUTCH" VAN SETTERS	1	HQ/0600	HQ/2200
E-173 AMBU 1 CLEARWATER		08/16	MIKE MARTIN	2		
6. Control Operations/Work Assignments:						
8. Division/Group Communication Summary						
Function	Channel	RX Frequency N/W	RX Tone/NAC	TX Frequency N/W	TX Tone/NAC	Mode
COMMAND	2 CMD 2	173.9625 N	146.2	164.8625 N	146.2	A
COMMAND	3 CMD 3	171.9250 N	146.2	165.9875 N	146.2	A
TACTICAL	9 TAC 9	166.7250 N	146.2	166.7250 N	146.2	A
AIR TO GROUND	14 A/G S	167.8375 N		167.8375 N		A
9. Prepared By (Resource Unit Leader)			Approved By (Planning Section Chief)		Date	Time
M.REED			MATT REED		08/11/2021	1305

Division/Group Assignment List (ICS 204 WF)
Controlled Unclassified Information//Basic

1. Incident Name:			3.			
COUGAR ROCK COMPLEX			Branch:		Division/Group	
2. Operational Period: DAY					DIV K/T/Q	
Date/Time From: 08/12/2021 0600 THU		Date/Time To: 08/12/2021 2200 THU				
4. Operations Personnel						
OPERATIONS CHIEF		BRIAN PLUME		DIVISION/GROUP SUPERVISOR		BRADLEY SHOEMAKER (LWD 8/22) WYNN WHITMEYER, TFLD (LWD 8/17)
6. Control Operations/Work Assignments:						
Group Includes Benton, Benton Face, Benton Ridge, North Fork Benton, Benton South, Lovell Knob, and Butte Creek fires.						
Task:						
<ul style="list-style-type: none"> Patrol and monitor throughout the Divisions. Continue dust abatement on the M and K roads as needed. Identify and mitigate hazard trees throughout the division. 						
Purpose:						
<ul style="list-style-type: none"> Quick identification and suppression at any potential threats to containment line. Minimize fire impact to high value timber. 						
End State:						
<ul style="list-style-type: none"> Fire stays within the established containment lines. 						
7. Special Instructions:						
<ul style="list-style-type: none"> E-173 AMBU 1 will stage at DP-225 and be available for all resources on K/T/Q. AMBU1 is NOT LINE qualified. Watch for logging truck traffic in the DP-225 area south down Bingo Creek Road to Highway 11. Backhaul any unused accountable property. 						
O-259 EMTF Dutch Van Seters (DUTCH MEDIC) is available for all divisions within Cougar South. He will be staged at DP-201.						
Specific Hazards:						
<ul style="list-style-type: none"> Minimize unnecessary fire traffic along Benton Butte Rd to steer clear of log hauling activity. High concentration of bee's within Div K. Large rocks are coming down in the West Fork of Butte Creek. Post lookouts and communicate hazards. 						
Any resources working in Map Section 32, note "North Butte" in the remarks on your CTR.						
ALL "INCIDENTS WITHIN AN INCIDENT" WILL GO THROUGH GRANGEVILLE DISPATCH ON CHANNEL 5, CPTPA1.						
8. Division/Group Communication Summary						
Function	Channel	RX Frequency N/W	RX Tone/NAC	TX Frequency N/W	TX Tone/NAC	Mode
COMMAND	2 CMD 2	173.9625 N	146.2	164.8625 N	146.2	A
COMMAND	3 CMD 3	171.9250 N	146.2	165.9875 N	146.2	A
TACTICAL	9 TAC 9	166.7250 N	146.2	166.7250 N	146.2	A
AIR TO GROUND	14 A/G S	167.8375 N		167.8375 N		A
9. Prepared By (Resource Unit Leader)			Approved By (Planning Section Chief)		Date	Time
M.REED			MATT REED		08/11/2021	1305

Division/Group Assignment List (ICS 204 WF)
Controlled Unclassified Information//Basic

1. Incident Name:				3.		
COUGAR ROCK COMPLEX				Branch:	Division/Group HEAVY EQUIPMENT	
2. Operational Period: DAY						
Date/Time From: 08/12/2021 0600 THU		Date/Time To: 08/12/2021 2200 THU				
4. Operations Personnel						
OPERATIONS CHIEF BRIAN PLUME		DIVISION/GROUP SUPERVISOR O-174 DAVID GREGORY (LWD 8/15)				
5. Resources Assigned this Period						
Strike Team / Task Force / Resource Designator	LWD	Leader	Number Persons	Drop Off PT./Time	Pick Up PT./Time	
O-227 TFLD BRANDT	08/13	JOSH BRANDT	1	COBBLER SPIKE /0600	COBBLER SPIKE/2200	
O-145 TFLD-T CAMPBELL	08/13	BRET CAMPBELL	1	COBBLER SPIKE /0600	COBBLER SPIKE/2200	
E-16 LOWB QUALITY EXCAVATION	08/17	DOUG JOHNSON	1	COBBLER SPIKE /0600	COBBLER SPIKE/2200	
E-41 LOWB RAY DAY LOWBOY	08/21	AARON WORKMAN	1	COBBLER SPIKE /0600	COBBLER SPIKE/2200	
E-63 LOWB CLEVELAND LOGGING T1 TRANSPORT	08/22	ROY MICHAEL	1	COBBLER SPIKE/0600	COBBLER SPIKE/2200	
E-110 LOWB WILLIAM V LOWERY & SONS T	08/15	CODY LOCKMAN	1	COBBLER SPIKE /0600	COBBLER SPIKE/2200	
E-51 DOZ3 KUYKENDALL (WAS E-52)	08/16	DAN KIELE	1	COBBLER SPIKE /0600	COBBLER SPIKE/2200	
E-9024 EXCA CLEVELAND LOGGING	08/22	TICE HUFFMAN	1	COBBLER SPIKE /0600	COBBLER SPIKE/2200	
E-162 MAST UPPER VALLEY EXCAVATOR	08/17	JIM KRUCKEBERG	1	COBBLER SPIKE /0600	COBBLER SPIKE/2200	
E-168 WTS1 CM WATER TENDER	08/17	STEVE EDSALL	1	COBBLER SPIKE /0600	COBBLER SPIKE/2200	
E-109 WTS2 RAY DAY	08/16	RUSS WESSMAN	1	COBBLER SPIKE /0600	COBBLER SPIKE/2200	
E-111 WTS2 LOWRY	08/14	BILL LOWRY	1	COBBLER SPIKE /0600	COBBLER SPIKE/2200	
E-170 GRD MADDEN GRADER	08/15	PAT MADDEN	2	COBBLER SPIKE /0600	COBBLER SPIKE/2200	
6. Control Operations/Work Assignments:						
8. Division/Group Communication Summary						
Function	Channel	RX Frequency N/W	RX Tone/NAC	TX Frequency N/W	TX Tone/NAC	Mode
COMMAND	4 CMD 4	171.8875 N	146.2	162.1875 N	146.2	A
TACTICAL	11 TAC 11	168.2500 N	146.2	168.2500 N	146.2	A
AIR TO GROUND	15 A/G N	166.6125 N		166.6125 N		A
9. Prepared By (Resource Unit Leader)			Approved By (Planning Section Chief)		Date	Time
M. REED			MATT REED		08/11/2021	1400

Division/Group Assignment List (ICS 204 WF)
Controlled Unclassified Information//Basic

1. Incident Name:				3.			
COUGAR ROCK COMPLEX				Branch:		Division/Group	
2. Operational Period: DAY						HEAVY EQUIPMENT	
Date/Time From: 08/12/2021 0600 THU		Date/Time To: 08/12/2021 2200 THU					
4. Operations Personnel							
OPERATIONS CHIEF		BRIAN PLUME		DIVISION/GROUP SUPERVISOR		O-174 DAVID GREGORY (LWD 8/15)	
6. Control Operations/Work Assignments:							
<p>Task: Support direct line construction in DIV F and H. // Improve roads impacted by fire operations. Purpose: Reduce the loss of high value timber. // Keep roads safe for fire and public traffic. End State: Crews have access to / egress from the fire's edge. // Roads damaged by fire traffic are repaired.</p>							
7. Special Instructions:							
<p>EMTF Ian Godfrey will be on DIV F. EMPF Luis "Mac" Marin will be on DIV H. AMBU 2 will be staged at DP 140. C-49 PatRick G has an EMT with equipment. C-31 Guard Crew has two EMTs and a paramedic with equipment.</p> <p>All IWI's will be run through Grangeville Dispatch</p> <p>Division Specific Hazard: Drive slow on all roads especially when hauling logs. Expect to meet fire vehicles that do not have CB communication.</p>							
8. Division/Group Communication Summary							
Function	Channel	RX Frequency N/W	RX Tone/NAC	TX Frequency N/W	TX Tone/NAC	Mode	
COMMAND	4 CMD 4	171.8875 N	146.2	162.1875 N	146.2	A	
TACTICAL	11 TAC 11	168.2500 N	146.2	168.2500 N	146.2	A	
AIR TO GROUND	15 A/G N	166.6125 N		166.6125 N		A	
9. Prepared By (Resource Unit Leader)			Approved By (Planning Section Chief)			Date	Time
M. REED			MATT REED			08/11/2021	1400

Division/Group Assignment List (ICS 204 WF)
Controlled Unclassified Information//Basic

1. Incident Name:			3.			
COUGAR ROCK COMPLEX			Branch:		Division/Group	
2. Operational Period: DAY					GOAT GROUP	
Date/Time From: 08/12/2021 0600 THU		Date/Time To: 08/12/2021 2200 THU				
4. Operations Personnel						
OPERATIONS CHIEF		BRIAN PLUME		DIVISION/GROUP SUPERVISOR		DAVE CROUSSER (LWD 8/21)
5. Resources Assigned this Period						
Strike Team / Task Force / Resource Designator		LWD	Leader	Number Persons	Drop Off PT./Time	Pick Up PT./Time
TFLD BROUWER		08/13	PAUL BROUWER	1	LINE SPIKE /0600	LINE SPIKE/2200
TFLD-T				1	LINE SPIKE/0600	LINE SPIKE/2200
HC21 NCF FSR #1			JARED GORHAM	20	LINE SPIKE/0600	LINE SPIKE/2200
HC2I PALOUSE			CODY CLINE	20	LINE SPIKE/0600	LINE SPIKE/2200
ENG4				4	LINE SPIKE/0600	LINE SPIKE/2200
ENG6				4	LINE SPIKE/0600	LINE SPIKE/2200
ENG6				4	LINE SPIKE/0600	LINE SPIKE/2200
6. Control Operations/Work Assignments:						
<p>Task: Implement and construct direct line construction in DIV F and H. Utilize air resources, hose lays, and skidgines as needed. Purpose: Reduce the loss of high value timber. End State: Crews have access to / egress from the fire's edge. Goat Creek fire remains within containment lines.</p>						
7. Special Instructions:						
<p>EMTF Ian Godfrey will be on DIV F. EMPF Luis "Mac" Marin will be on DIV H. AMBU 2 will be staged at DP 140. C-49 PatRick G has an EMT with equipment. C-31 Guard Crew has two EMTs and a paramedic with equipment.</p> <p>All IWI's will be run through Grangeville Dispatch</p> <p>Division Specific Hazard: Drive slow on all roads especially when hauling logs. Expect to meet fire vehicles that do not have CB communication.</p>						
8. Division/Group Communication Summary						
Function	Channel	RX Frequency N/W	RX Tone/NAC	TX Frequency N/W	TX Tone/NAC	Mode
COMMAND	4 CMD 4	171.8875 N	146.2	162.1875 N	146.2	A
TACTICAL	8 TAC 8	168.6000 N	146.2	168.6000 N	146.2	A
AIR TO GROUND	15 A/G N	166.6125 N		166.6125 N		A
9. Prepared By (Resource Unit Leader)			Approved By (Planning Section Chief)		Date	Time
M. REED			MATT REED		08/11/2021	1310

INCIDENT RADIO COMMUNICATIONS PLAN I-205				1. INCIDENT NAME			2. DATE/TIME PREPARED			3. OPERATIONAL PERIOD DATE/TIME		
				Cougar Rock			8/11/2021			8/12/21 06:00 - 22:00		
4. BASIC RADIO CHANNEL UTILIZATION												
Ch #	Function	Channel Name	Assignment	RX Freq	N/W	RX Tone/NAC	TX Freq	N/W	TX Tone/NAC	Mode Analog (A) Digital (D) Mixed (M)	Remarks	
1	COMMAND	CMD 1	All Resources	169.7500	N	146.2	167.1000	N	146.2	A	COUGAR ROCK COMMUNICATIONS	
2	COMMAND	CMD 2	All Resources	173.9625	N	146.2	164.8625	N	146.2	A	COUGAR ROCK COMMUNICATIONS	
3	COMMAND	CMD 3	All Resources	171.9250	N	146.2	165.9875	N	146.2	A	COUGAR ROCK COMMUNICATIONS	
4	COMMAND	CMD 4	All Resources	171.8875	N	146.2	162.1875	N	146.2	A	COUGAR ROCK COMMUNICATIONS	
5	COMMAND	CPTPA 1	All Resources	159.2700	N		151.2050	N	97.4	A	ALL IWI's TO GRANGEVILLE DISPATCH	
6	TAC	TAC 6	DIV F	168.0500	N	146.2	168.0500	N	146.2	A	NIFC TAC	
7	TAC	TAC 7	DIV H	168.2000	N	146.2	168.2000	N	146.2	A	NIFC TAC	
8	TAC	TAC 8	GOAT GROUP	168.6000	N	146.2	168.6000	N	146.2	A	NIFC TAC	
9	TAC	TAC 9	DIV K/T/Q	166.7250	N	146.2	166.7250	N	146.2	A	NIFC TAC	
10	COMMAND	CPTPA 2	I/A	153.0650	N		158.1600	N	97.4	A	NOT MONITORED BY COUGAR ROCK COMM. OR GRANGEVILLE DISPATCH	
11	TAC	TAC 11	DIV A/C & Heavy Equipment Group	168.2500	N	146.2	168.2500	N	146.2	A	NIFC TAC	
12	TAC	ID EMS	All Resources	155.2800	N		155.2800	N	156.7	A	EMS AMBO/AIR UNITS	
13	AIR TO GROUND	IDL A2GS	All Resources	151.1450	N		151.1450	N	100.0	A	STATEWIDE AIR/GUARD	
14	AIR TO GROUND	A/G SOUTH	A/G SOUTH	167.8375	N		167.8375	N		A	NIFC A/G	
15	AIR TO GROUND	A/G NORTH	A/G NORTH	166.6125	N		166.6125	N		A	NIFC A/G	
16	AIRGUARD	AIRGUARD	All Resources	168.6250	N		168.6250	N	110.9	A	EMERGENCY	
5. Special Instructions:		ALL IWI'S COMMUNICATED THRU GRANGEVILLE DISPATCH ON CPTPA 1, CHANNEL 5										
6. I-205 Prepared By: Communications Unit Leader			Name: JIM KREBS, COML(T)					Signature:				

AIR OPERATIONS SUMMARY

Prepared by Danny Fairchild

PREPARED DATE/TIME: 08-12-21

PUMPKIN: 2029

1. INCIDENT NAME: Cougar Rock Complex 2. OPERATIONAL PERIOD 08-12-21: START TIME: 0700 END TIME: 2100 SUNRISE:0540 SUNSET: 1959

3. REMARKS (Safety Notes, Hazards, Air Operations Special Equipment, etc.): Heavy Smoke Poor Visibility. Multiple TFR'S in the area!
 Heli-Logging Just Southwest of TFR --Tail #: 684UH

4. READY ALERT AIRCRAFT: 7HX or Order medical A/C through GVC dispatch SEE Medical plan	5. TFR #1/3048 Polygon 10,500 MSL	6. FIXED WING	# Avail / Type / Make-Model / FAA N# / Base(s) SEATS AV in GIC order through GVC Dispatch
		ATGS Aircraft	AA-117(4NC) AA-0KQ IN GIC Request through GVC dispatch

Helicopters Requests:

Order thru Division Supervisor → OPS/COMMS → Helibase.

Email Daily Costs to:

2021.cougarrock.finance@firenet.gov & gilahelitack@gmail.com

7. PERSONNEL	Phone	8. FREQUENCIES	AM	FM
NCF FAO: Willy Acton	208-507-0942	Air / Air TFR	127.1000	
Orofino HEBM: Danny Fairchild	605-481-8902	Air /Air Rotor	118.2000	
NCF A/C Desk	208-983-6803	Cougar Rock A/G NORTH		166.6125
NCF A/C Coord	208-983-6805	Cougar Rock A/G SOUTH		167.8375
IDF Aviation MGR Kevin Benton	208-290-8969	A/G IDL		151.1450 TX 100.0
		ID EMS		155.2800 TX 156.7
		DECK		163.1000
		Air Guard		168.6250 TX/RX 110.9

9. Helicopters (Use Additional Sheets as Necessary)

FAA N#	TY	MAKE/MODEL	BASE	AVAIL	START	REMARKS
N6979R	1	S-64E	PUW	0800	0830	(Tanked) H20 Drops-Colarete 208-816-8862
N27HX	3	Bell 407	S68	0800	0830	Recon/Pax/H20

MISC. INFORMATION

Approved by

Medical Plan (ICS 206 WF)
Controlled Unclassified Information//Basic

1. Incident/Project Name:		2. Operational Period: DAY					
COUGAR ROCK COMPLEX		Date/Time From: 08/12/2021 0600 THU		Date/Time To: 08/12/2021 2200 THU			
3. Ambulance Services							
Name	Complete Address	Phone & EMS Frequency		Advanced Life Support (ALS)			
		Yes	No				
CLEARWATER COUNTY AMBULANCE	1195 RIVERSIDE AVE OROFINO, ID	(208) 821-0179 (208) 400-1007			X		
ARMY CORPS OF ENGINEERS	BOAT RESCUE (DWORSHAK RESERVOIR)	(208) 821-0179 (208) 716-0910			X		
SHERIFF	BOAT RESCUE (DWORSHAK RESERVOIR)	911			X		
4. Air Ambulance Services							
Name	Phone	Type of Aircraft	Capability				
LIFE FLIGHT LEWISTON / PULLMAN	(800) 232-0911		NIGHT VISION, ALS TRANSPORT				
TWO BEAR AIR KALISPELL, MT	(406) 758-5585	NIGHT VISION, HOIST,	CAN TRANSPORT TO GROUND UNIT OR PVT				
5. Hospitals							
Name Complete Address	GPS Datum - WGS 84 Coordinate Standard Degrees Decimal Minutes DD° MM.MMM' N - Lat DD° MM.MMM' W - Long	Travel Time		Phone	Helipad		Level of Care Facility
		Air	Ground		Yes	No	
OROFINO HEALTH CLINIC 1055 RIVERSIDE AVE OROFINO, ID	Lat: N 46 29.3802 Long: W 116 15.8841 VHF:		45 MIN - 3 HR	(208) 476-5777		X	BLS / WALK IN, VACCINE BY APPT
CLEARWATER VALLEY 301 CEDAR ST OROFINO, ID	Lat: N 46 29.1897 Long: W 116 15.5887 VHF:	20 MIN	45 MIN - 3 HR	(208) 476-4555	X		CRITICAL ACCESS, COVID TEST
ST. JOSEPH REGIONAL MED 1250 IDAHO ST LEWISTON, ID	Lat: N 46 25.016 Long: W 117 01.449 VHF:	30 MIN	1.25 - 3.75 HR	(208) 743-2511	X		LVL 3 TRAUMA CENTER
KOOTENAI CLINIC 2003 KOOTENAI HEALTH WAY COEUR D'ALENE, ID	Lat: N 47 41.8026 Long: W 116 47.7669 VHF:	30 MIN	3.75 - 5.5 HR	(208) 625-5707	X		LVL 3 TRAUMA CENTER
8. Prepared By (Medical Unit Leader)		9. Date/Time		10. Reviewed By (Safety Officer)		11. Date/Time	
M. REED		08/11/2021 1325		SAFETY			

Medical Plan (ICS 206 WF)
Controlled Unclassified Information//Basic

1. Incident/Project Name:		2. Operational Period: DAY					
COUGAR ROCK COMPLEX		Date/Time From: 08/12/2021 0600 THU		Date/Time To: 08/12/2021 2200 THU			
5. Hospitals							
Name Complete Address	GPS Datum - WGS 84 Coordinate Standard Degrees Decimal Minutes DD° MM.MMM' N - Lat DD° MM.MMM' W - Long	Travel Time		Phone	Helipad		Level of Care Facility
		Air	Ground		Yes	No	
HARBORVIEW BURN CENTER 395 9TH AVE SEATTLE, WA	Lat: N 47 36.2287	2 HR	7 - 8.75 HR	(206) 520-5000	X		LVL 1 TRAUMA & BURN CENTER
	Long: W 122 19.3937						
	VHF:						
6. Area Location Capability							
Branch Division/Group							
F/H	EMS Responders & Capability:	EMTF IAN GODFREY/EMTP MAC MARIN					
	Equipment Available on Scene:	PARAMEDIC; EMT					
	Medical Emergency Channel:	5 - CPTPA 1					
	ETA for Ambulance to Scene:						
	Air:	20 MIN					
	Ground:	3 HR					
	Approved Helispot:						
	Lat:	N 46 59.547					
	Long:	W 115 50.820					
DP-140	EMS Responders & Capability:	EMTF TY DRALLE; EMTF BRENDEN QUINLAN/AMBULANCE (AMBU 2)					
	Equipment Available on Scene:	ALS					
	Medical Emergency Channel:	5 - CPTPA 1					
	ETA for Ambulance to Scene:						
	Air:	20 MIN					
	Ground:	3 HR					
	Approved Helispot:						
	Lat:						
	Long:						
8. Prepared By (Medical Unit Leader)		9. Date/Time		10. Reviewed By (Safety Officer)		11. Date/Time	
M. REED		08/11/2021 1325		SAFETY			

Medical Plan (ICS 206 WF)
Controlled Unclassified Information//Basic

1. Incident/Project Name:		2. Operational Period: DAY	
COUGAR ROCK COMPLEX		Date/Time From: 08/12/2021 0600 THU	Date/Time To: 08/12/2021 2200 THU
6. Area Location Capability			
Branch Division/Group			
K/T/Q	EMS Responders & Capability:	EMTF DUTCH (DUTCH MEDIC)/AMBULANCE (AMBU 1)	
	Equipment Available on Scene:	ALS	
	Medical Emergency Channel:	5 - CPTPA 1	
	ETA for Ambulance to Scene:		
	Air:	20 MIN	
	Ground:	45 MIN	
	Approved Helispot:		
	Lat:	N 46 37.7781	
	Long:	W 115 48.5751	
7. Remote Camp Location(s)			
Name & Location			
COBBLER SPIKE	Point Of Contact:	SOF2 JEFF HANDEL	
	EMS Responders & Capability	EMTF TY DRALLE; EMTF BRENDEN QUINLAN/AMBULANCE (AMBU 2)	
COBBLER'S KNOB	Equipment Available on Scene:	ALS	
	Medical Emergency Channel:	5 - CPTPA 1	
	ETA for Ambulance To Scene:		
	Air:	20 MIN	
	Ground:	3 HR	
	Approved Helispot:		
	Lat:	N 46 54.149	
	Long:	W 115 54.075	
8. Prepared By (Medical Unit Leader)		9. Date/Time	10. Reviewed By (Safety Officer)
M. REED		08/11/2021 1325	SAFETY
			11. Date/Time

Mop-up Guidelines

Mop-up from the fire edge to a distance interior that:

- 1.) Minimizes hazard exposure to suppression resources;
- 2.) Is commensurate to the risk of escape from torching and spotting;
- 3.) Is a minimum distance of 100 feet if firefighter safety is not compromised.

Concentrate on ragged green fingers or islands that have potential to torch and spot. One hundred percent mop-up of all spot fires outside the perimeter.

Keep Your Crew Healthy for the Next One!

- **Perform hand hygiene:** When soap and water are available, wash your hands often for at least 20 seconds, especially after coughing or sneezing. This is especially true when hands are visibly dirty, after touching commonly touched surfaces like porta potty doors, tables, and equipment, after using the toilet, or before eating. If soap and water are not readily available, alcohol-based hand sanitizers with at least 60% alcohol should be used.
- **Follow respiratory etiquette principles:** Cover your nose and mouth with a tissue when coughing or sneezing. If using a tissue, immediately throw away the tissue away after use and wash or sanitize your hands as described above.
- **Keeping hands away from face:** Practice not touching your eyes, nose, or mouth. While it may seem simple, germs often spread this way.
- **Clean and disinfect the environment appropriately:** Frequently touched surfaces in the workplace (engines, rigs, and buggies) should be routinely cleaned and if necessary disinfected.

Check-in / Demob / Finance Info

Finance Unit needs the following before DEMOB:

-All CTR's/Shift Tickets signed

-Evaluations **with Resource Order number** are mandatory for:

- Forest Service AD's
- Contract Crews (excluding IDL preseason contracts)
- VIPR contracts

-Vehicle inspections (pre and post)

-Any required paperwork (casual hire document, STARS or W-9)

If you have questions call Robin at 208-719-1939, Richard at 208-719-6033, or email Will at wdevore@pa.gov or talk to one of us at Headquarters briefing.

DEMOB Unit needs the following before DEMOB:

-Signed Demobilization Check-out form from FOB

- Supply
- Communications
- Facilities
- Ground Support

If you have questions for Check-in/DEMOB

call Heather at 208-719-1904 or find her after Headquarters briefing

****Any outstanding issues brought to your attention MUST be resolved before DEMOB**

IMT PHONE LIST

Position	Name	Phone
ICT3	Turner, Shawn	208.719.1963
	Turner – sat phone	619.215.0182
SOF2	Jeff Handel	208.719.1936
PIOF/LOFR	Wambaugh, John	814.335.3679
OPS3	Plume, Brian	619.215.0103
PSC3(t)	Reed, Matt	570.412.7834
SCKN	Kerr, Heather	208.719.1904
FSC3	Regester, Robin	208.719.1939
TIME(t)	Devore, Will	717.580.6728
LSC3	Choplick, Charles	717.877.1687
COML(t)	Krebs, James	570.765.3976
GSUL(t)	Appleby, Dale	208.719.1886
RCDM	Josh Mecham	208.719.6003
RCDM	Carlos Santillana	208.719.1937
FACL	Ken Haberl	208.719.1943

MEDICAL PLAN (ICS 206 WF)
Controlled Unclassified Information//Basic

Medical Incident Report

FOR A NON-EMERGENCY INCIDENT, WORK THROUGH CHAIN OF COMMAND TO REPORT AND TRANSPORT INJURED PERSONNEL AS NECESSARY.

FOR A MEDICAL EMERGENCY: IDENTIFY ON SCENE INCIDENT COMMANDER BY NAME AND POSITION AND ANNOUNCE "MEDICAL EMERGENCY" TO INITIATE RESPONSE FROM IMT COMMUNICATIONS/DISPATCH.
Ex: Sprains, strains, minor heat-related illness.

Use the following items to communicate situation to communications/dispatch.

1. CONTACT COMMUNICATIONS / DISPATCH (Verify correct frequency prior to starting report)

Ex: "Communications: Div. Alpha. Stand-by for Emergency Traffic."

2. INCIDENT STATUS: Provide incident summary (including number of patients) and command structure.

Ex: "Communications, I have a Red priority patient, unconscious, struck by a falling tree. Requesting air ambulance to Forest Road 1 at (Lat/Long.) This will be the Trout Meadow Medical, IC is TFLD Jones. EMT Smith is providing medical care."

Severity of Emergency / Transport Priority	<input type="checkbox"/> RED/PRIORITY 1 Life or limb threatening injury or illness. Evacuation need is IMMEDIATE <i>Ex: Unconscious, difficulty breathing, bleeding severely, 2° - 3° burns more than 4 palm sizes, heat stroke, disoriented.</i> <input type="checkbox"/> YELLOW/PRIORITY 2 Serious Injury or illness. Evacuation may be DELAYED if necessary. <i>Ex: Significant trauma, unable to walk, 2° - 3° burns not more than 1-3 palm sizes.</i> <input type="checkbox"/> GREEN/PRIORITY 3 Minor Injury or illness. Non-Emergency transport	
Nature of Injury or Illness & Mechanism of Injury		Brief Summary of Injury or Illness <i>(Ex: Unconscious, Struck by Falling Tree)</i>
Transport Request		Air Ambulance / Short Haul/Hoist Ground Ambulance / Other
Patient Location		Descriptive Location & Lat. / Long. (WGS84)
Incident Name		Geographic Name + "Medical" <i>(Ex: Trout Meadow Medical)</i>
On-Scene Incident Commander		Name of on-scene IC of Incident within an Incident <i>(Ex: TFLD Jones)</i>
Patient Care		Name of Care Provider <i>(Ex: EMT Smith)</i>

3. INITIAL PATIENT ASSESSMENT: Complete this section for each patient as applicable (start with the most severe patient)

Patient Assessment: See IRPG Page 106

Treatment:

4. TRANSPORT PLAN:

Evacuation Location (if different): (Descriptive Location (drop point, intersection, etc.) or Lat. /Long.) Patient's ETA to Evacuation Location:

Helispot / Extraction Site Size and Hazards:

5. ADDITIONAL RESOURCES / EQUIPMENT NEEDS:

Example: Paramedic/EMT, Crews, Immobilization Devices, AED, Oxygen, Trauma Bag, IV/Fluid(s), Splints, Rope rescue, Wheeled litter, HAZMAT, Extrication

6. COMMUNICATIONS: Identify State Air/Ground EMS Frequencies and Hospital Contacts as applicable

Function	Channel Name/Number	Receive (Rx)	Tone/NAC *	Transmit (Tx)	Tone/NAC *
COMMAND					
AIR-TO-GRND					
TACTICAL					

7. CONTINGENCY: Considerations: If primary options fail, what actions can be implemented in conjunction with primary evacuation method? Be thinking ahead.

8. ADDITIONAL INFORMATION: *Updates/Changes, etc.*

REMEMBER: Confirm ETA's of resources ordered. Act according to your level of training. Be Alert. Keep Calm. Think Clearly. Act Decisively.