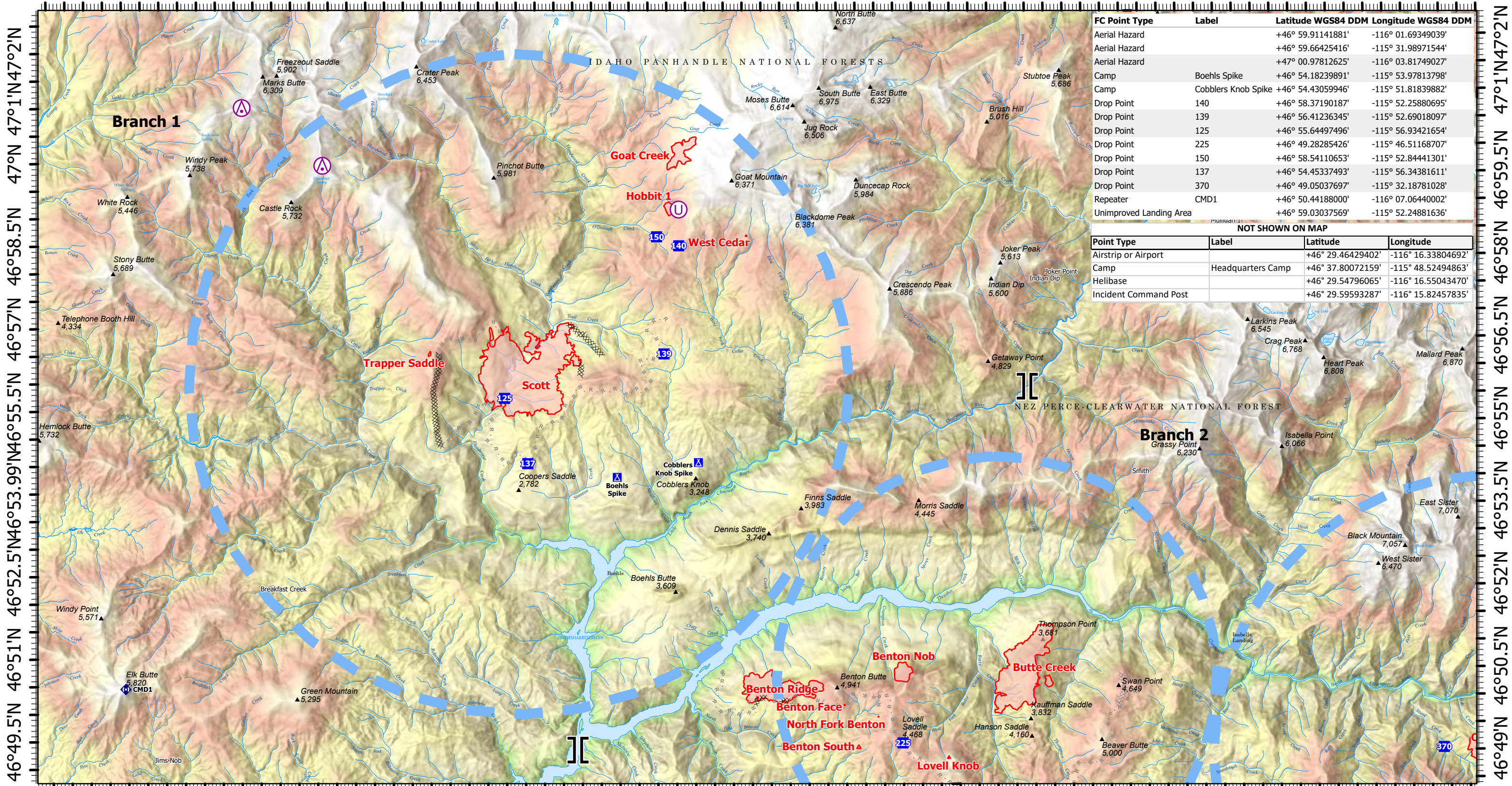


116°9'W 116°7'W 116°5'W 116°3'W 116°1'W 115°59'W 115°56.5'W 115°54'W 115°51.5'W 115°49'W 115°46.5'W 115°44'W 115°41.5'W 115°39'W 115°36.5'W 115°34'W 115°31.5'W



FC Point Type	Label	Latitude WGS84 DDM	Longitude WGS84 DDM
Aerial Hazard		+46° 59.91141881'	-116° 01.69349039'
Aerial Hazard		+46° 59.66425416'	-115° 31.98971544'
Aerial Hazard		+47° 00.97812625'	-116° 03.81749027'
Camp	Boehls Spike	+46° 54.18239891'	-115° 53.97813798'
Camp	Cobblers Knob Spike	+46° 54.43059946'	-115° 51.81839882'
Drop Point	140	+46° 58.37190187'	-115° 52.25880695'
Drop Point	139	+46° 56.41236345'	-115° 52.69018097'
Drop Point	125	+46° 55.64497496'	-115° 56.93421654'
Drop Point	225	+46° 49.28285426'	-115° 46.51168707'
Drop Point	150	+46° 58.54110653'	-115° 52.84441301'
Drop Point	137	+46° 54.45337493'	-115° 56.34381611'
Drop Point	370	+46° 49.05037697'	-115° 32.18781028'
Repeater	CMD1	+46° 50.44188000'	-116° 07.06440002'
Unimproved Landing Area		+46° 59.03037569'	-115° 52.24881636'

NOT SHOWN ON MAP			
Point Type	Label	Latitude	Longitude
Airstrip or Airport		+46° 29.46429402'	-116° 16.33804692'
Camp	Headquarters Camp	+46° 37.80072159'	-115° 48.52494863'
Helibase		+46° 29.54796065'	-116° 16.55043470'
Incident Command Post		+46° 29.59593287'	-116° 15.82457835'

116°9'W 116°7'W 116°5'W 116°3'W 116°1'W 115°59'W 115°56.5'W 115°54'W 115°51.5'W 115°49'W 115°46.5'W 115°44'W 115°41.5'W 115°39'W 115°36.5'W 115°34'W 115°31.5'W

Air Operations and Hazards Branch 1
 July 15, 2021 Day
 Cougar Rock Complex IDCTS-000623
 3167.5 acres at 22:30, 07/13/2021

- Aerial Hazard
- Unimproved Landing Area
- Branch Break
- Drop Point
- Camp
- Repeater
- Completed Dozer Line
- Planned Dozer Line
- Planned Road as Line
- Planned Secondary Line
- Temporary Flight Restriction
- Wildfire Daily Fire Perimeter



bhines 7/14/2021 2222
 North American 1983 Datum, Lat/Long Grid
 PCS: NAD 1983 UTM Zone 11N
 Reference Scale: 1:63,360