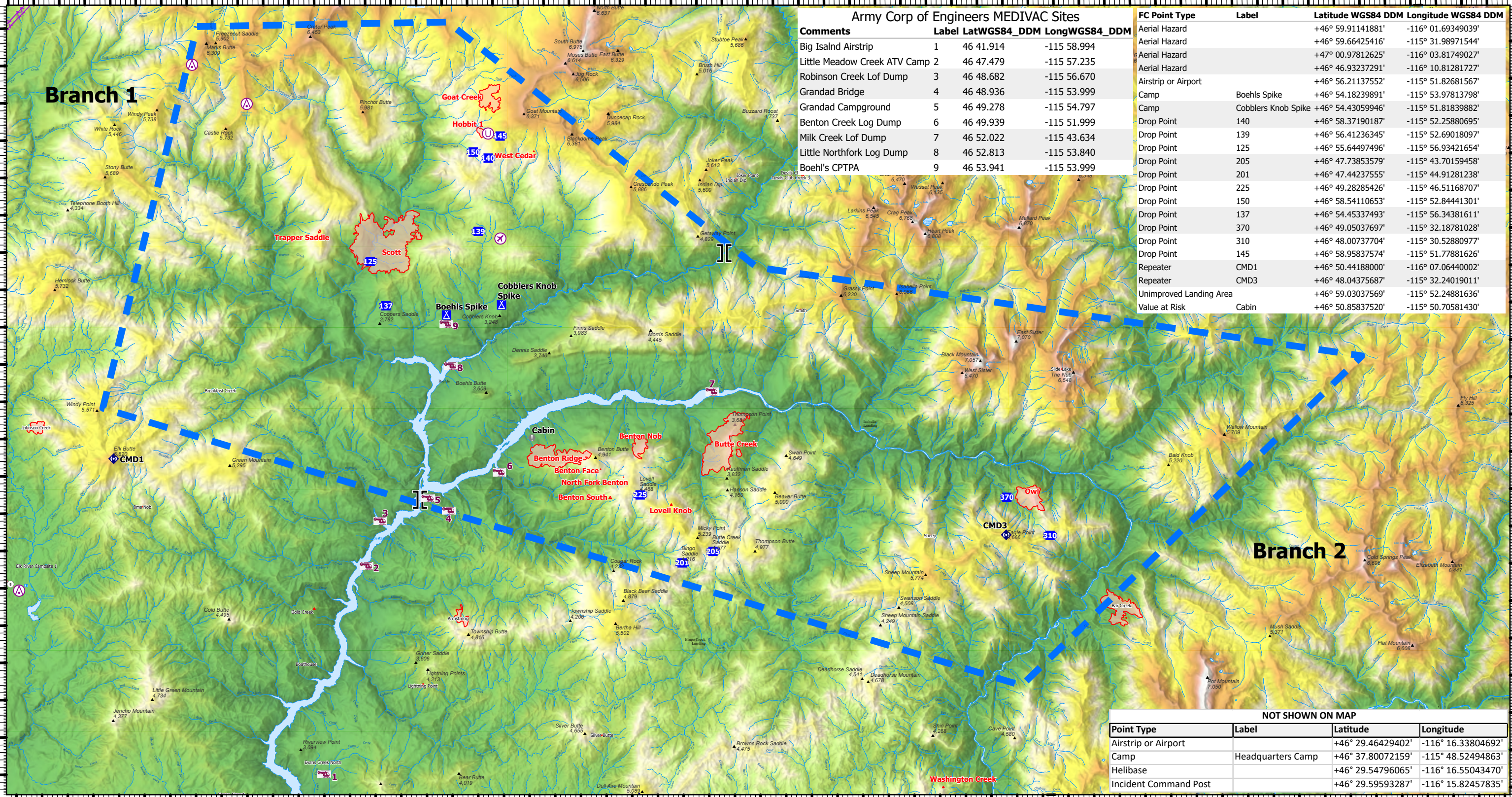


116°8'W 116°4'W 116°W 115°56'W 115°52'W 115°48'W 115°44'W 115°40'W 115°36.01'W 115°32'W 115°28'W 115°24'W 115°20'W 115°16'W

47°N  
46°56'N  
46°52'N  
46°48'N  
46°44'N

47°N  
46°56'N  
46°52'N  
46°48'N  
46°44'N

Army Corp of Engineers MEDIVAC Sites				FC Point Type	Label	Latitude WGS84 DDM	Longitude WGS84 DDM
Comments	Label	LatWGS84_DDM	LongWGS84_DDM				
Big Island Airstrip	1	46 41.914	-115 58.994	Aerial Hazard		+46° 59.91141881'	-116° 01.69349039'
Little Meadow Creek ATV Camp	2	46 47.479	-115 57.235	Aerial Hazard		+46° 59.664251416'	-115° 31.98971544'
Robinson Creek Lof Dump	3	46 48.682	-115 56.670	Aerial Hazard		+47° 00.97812625'	-116° 03.81749027'
Grandad Bridge	4	46 48.936	-115 53.999	Aerial Hazard		+46° 46.93237291'	-116° 10.81281727'
Grandad Campground	5	46 49.278	-115 54.797	Airstrip or Airport		+46° 56.21137552'	-115° 51.82681567'
Benton Creek Log Dump	6	46 49.939	-115 51.999	Camp	Boehls Spike	+46° 54.18239891'	-115° 53.97813798'
Milk Creek Lof Dump	7	46 52.022	-115 43.634	Camp	Cobblers Knob Spike	+46° 54.43059946'	-115° 51.81839882'
Little Northfork Log Dump	8	46 52.813	-115 53.840	Drop Point	140	+46° 58.37190187'	-115° 52.25880695'
Boehl's CPTA	9	46 53.941	-115 53.999	Drop Point	139	+46° 56.41236345'	-115° 52.69018097'
				Drop Point	125	+46° 55.64497496'	-115° 56.93421654'
				Drop Point	205	+46° 47.73853579'	-115° 43.70159458'
				Drop Point	201	+46° 47.44237555'	-115° 44.91281238'
				Drop Point	225	+46° 49.28285426'	-115° 46.51168707'
				Drop Point	150	+46° 58.54110653'	-115° 52.84441301'
				Drop Point	137	+46° 54.45337493'	-115° 56.34381611'
				Drop Point	370	+46° 49.05037697'	-115° 32.18781028'
				Drop Point	310	+46° 48.00737704'	-115° 30.52880977'
				Drop Point	145	+46° 58.95837574'	-115° 51.77881626'
				Repeater	CMD1	+46° 50.44188000'	-116° 07.06440002'
				Repeater	CMD3	+46° 48.04375687'	-115° 32.24019011'
				Unimproved Landing Area		+46° 59.03037569'	-115° 52.24881636'
				Value at Risk	Cabin	+46° 50.85837520'	-115° 50.70581430'



NOT SHOWN ON MAP

Point Type	Label	Latitude	Longitude
Airstrip or Airport		+46° 29.46429402'	-116° 16.33804692'
Camp	Headquarters Camp	+46° 37.80072159'	-115° 48.52494863'
Helibase		+46° 29.54796065'	-116° 16.55043470'
Incident Command Post		+46° 29.59593287'	-116° 15.82457835'

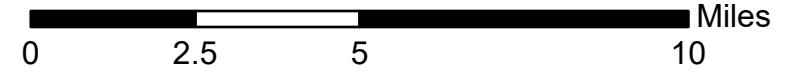
**Air Operations and Hazards**

July 17, 2021 Day

Cougar Rock Complex IDCTS-000623

3835.4 acres at 01:40, 07/16/2021

- Army Corps of Engineers MEDIVAC
- Aerial Hazard
- Airstrip or Airport
- Unimproved Landing Area
- Branch Break
- Drop Point
- Camp
- Value at Risk
- Repeater
- Aerial Hazard
- Temporary Flight Restriction
- Wildfire Daily Fire Perimeter



bhines 7/16/2021 2150  
North American 1983 Datum, Lat/Long Grid  
PCS: NAD 1983 UTM Zone 11N  
Reference Scale: 1:63,360