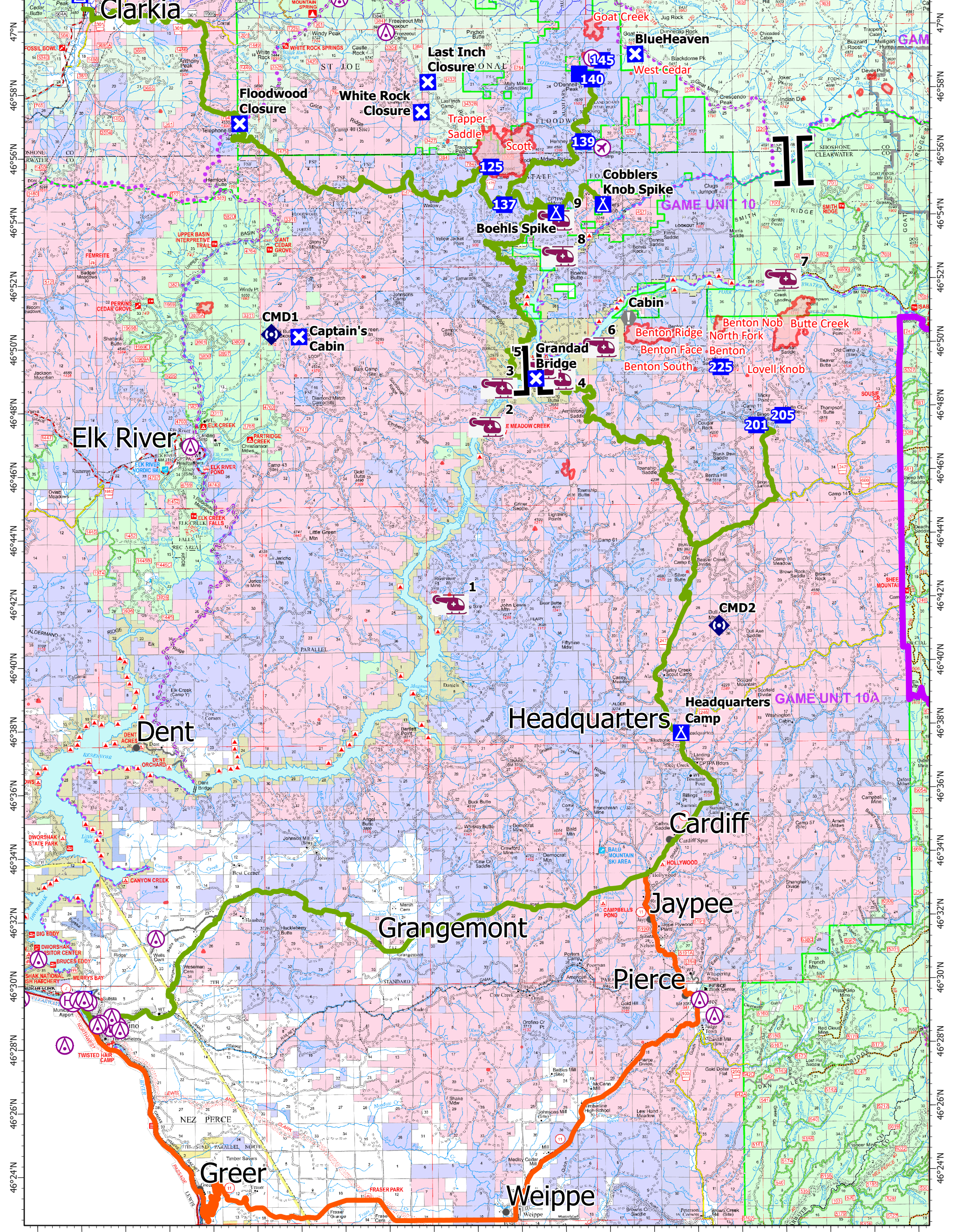


116°18'W 116°16'W 116°14'W 116°12'W 116°10'W 116°8'W 116°6'W 116°4'W 116°2'W 116°W 115°58'W 115°56'W 115°54'W 115°52'W 115°50'W 115°48'W 115°46'W 115°44'W 115°42'W 115°40'W 115°38'W

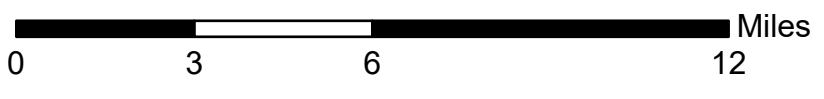


116°18'W 116°16'W 116°14'W 116°12'W 116°10'W 116°8'W 116°6'W 116°4'W 116°2'W 116°W 115°58'W 115°56'W 115°54'W 115°52'W 115°50'W 115°48'W 115°46'W 115°44'W 115°42'W 115°40'W 115°38'W

- Army Corps of Engineers MEDIVAC
- Aerial Hazard
- Airstrip or Airport
- Helibase
- Unimproved Landing Area
- Branch Break
- Incident Command Post
- Drop Point
- Closure
- Camp
- Value at Risk
- Repeater
- Wildfire Daily Fire Perimeter
- Roads To Camps
- Alternate
- Primary
- USFS IA
- IdahoCities

Transportation Map

Cougar Rock Complex
IDCTS-000623
OP: 07/17/2021 Day



A. Mock 7/16/2021 1644
North American 1983
Datum. LatLong Grid
PCS: NAD 1983 Idaho