

116°8'W 116°4'W 116°W 115°56'W 115°52'W 115°48'W 115°44'W 115°40'W 115°36.01'W 115°32'W 115°28'W 115°24'W 115°20'W 115°16'W 115°12'W

47°N

46°56'N

46°52'N

46°48'N

46°44'N

46°40'N

47°N

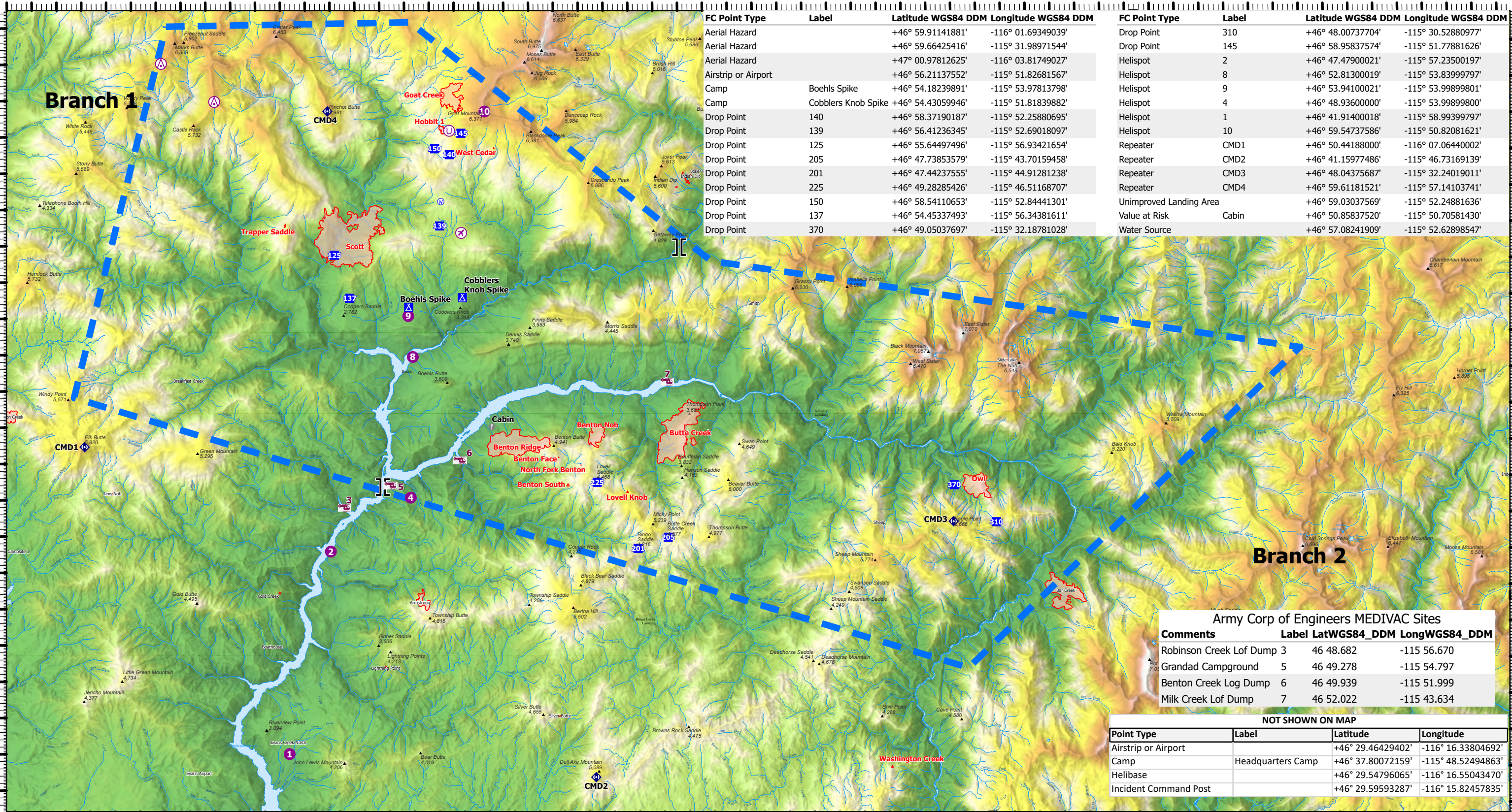
46°56'N

46°52'N

46°48'N

46°44'N

46°40'N



| FC Point Type | Label | Latitude WGS84 DDM | Longitude WGS84 DDM |
|---------------------|---------------------|--------------------|---------------------|
| Aerial Hazard | | +46° 59.91141881' | -116° 01.69349039' |
| Aerial Hazard | | +46° 59.66425416' | -115° 31.98971544' |
| Aerial Hazard | | +47° 00.97812625' | -116° 03.81749027' |
| Airstrip or Airport | | +46° 56.21137552' | -115° 51.82681567' |
| Camp | Boehls Spike | +46° 54.18239891' | -115° 53.97813798' |
| Camp | Cobblers Knob Spike | +46° 54.43059946' | -115° 51.81839882' |
| Drop Point | 140 | +46° 58.37190187' | -115° 52.25880695' |
| Drop Point | 139 | +46° 56.41236345' | -115° 52.69018097' |
| Drop Point | 125 | +46° 55.64497496' | -115° 56.93421654' |
| Drop Point | 205 | +46° 47.73853579' | -115° 43.70159458' |
| Drop Point | 201 | +46° 47.44237555' | -115° 44.91281238' |
| Drop Point | 225 | +46° 49.28285426' | -115° 46.51168707' |
| Drop Point | 150 | +46° 58.54110653' | -115° 52.84441301' |
| Drop Point | 137 | +46° 54.45337493' | -115° 56.34381611' |
| Drop Point | 370 | +46° 49.05037697' | -115° 32.18781028' |

| FC Point Type | Label | Latitude WGS84 DDM | Longitude WGS84 DDM |
|-------------------------|-------|--------------------|---------------------|
| Drop Point | 310 | +46° 48.00737704' | -115° 30.52880977' |
| Drop Point | 145 | +46° 58.95837574' | -115° 51.77881626' |
| Helispot | 2 | +46° 47.47900021' | -115° 57.23500197' |
| Helispot | 8 | +46° 52.81300019' | -115° 53.83999797' |
| Helispot | 9 | +46° 53.94100021' | -115° 53.99899801' |
| Helispot | 4 | +46° 48.93600000' | -115° 53.99899800' |
| Helispot | 1 | +46° 41.91400018' | -115° 58.99399797' |
| Helispot | 10 | +46° 59.54737586' | -115° 50.82081621' |
| Repeater | CMD1 | +46° 50.44188000' | -116° 07.06440002' |
| Repeater | CMD2 | +46° 41.15977486' | -115° 46.73169139' |
| Repeater | CMD3 | +46° 48.04375687' | -115° 32.24019011' |
| Repeater | CMD4 | +46° 59.61181521' | -115° 57.14103741' |
| Unimproved Landing Area | | +46° 59.03037569' | -115° 52.24881636' |
| Value at Risk | Cabin | +46° 50.85837520' | -115° 50.70581430' |
| Water Source | | +46° 57.08241909' | -115° 52.62898547' |

| Army Corp of Engineers MEDIVAC Sites | | | |
|--------------------------------------|-------|--------------|---------------|
| Comments | Label | LatWGS84_DDM | LongWGS84_DDM |
| Robinson Creek Lof Dump | 3 | 46 48.682 | -115 56.670 |
| Grandad Campground | 5 | 46 49.278 | -115 54.797 |
| Benton Creek Log Dump | 6 | 46 49.939 | -115 51.999 |
| Milk Creek Lof Dump | 7 | 46 52.022 | -115 43.634 |

| NOT SHOWN ON MAP | | | |
|-----------------------|-------------------|-------------------|--------------------|
| Point Type | Label | Latitude | Longitude |
| Airstrip or Airport | | +46° 29.46429402' | -116° 16.33804692' |
| Camp | Headquarters Camp | +46° 37.80072159' | -115° 48.52494863' |
| Helibase | | +46° 29.54796065' | -116° 16.55043470' |
| Incident Command Post | | +46° 29.59593287' | -116° 15.82457835' |

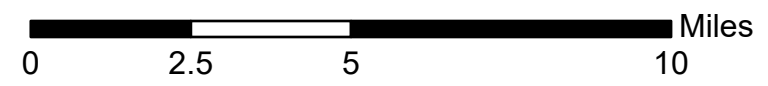
Air Operations and Hazards

July 18, 2021 Day

Cougar Rock Complex IDCTS-000623

4068.1 acres at 21:30, 07/16/2021

- Army Corps of Engineers MEDIVAC
- Aerial Hazard
- Airstrip or Airport
- Helispot
- Unimproved Landing Area
- Branch Break
- Drop Point
- Camp
- Value at Risk
- Repeater
- Water Source
- Temporary Flight Restriction
- Wildfire Daily Fire Perimeter



bhines 7/17/2021 2126
 North American 1983 Datum, Lat/Long Grid
 PCS: NAD 1983 UTM Zone 11N
 Reference Scale: 1:63,360