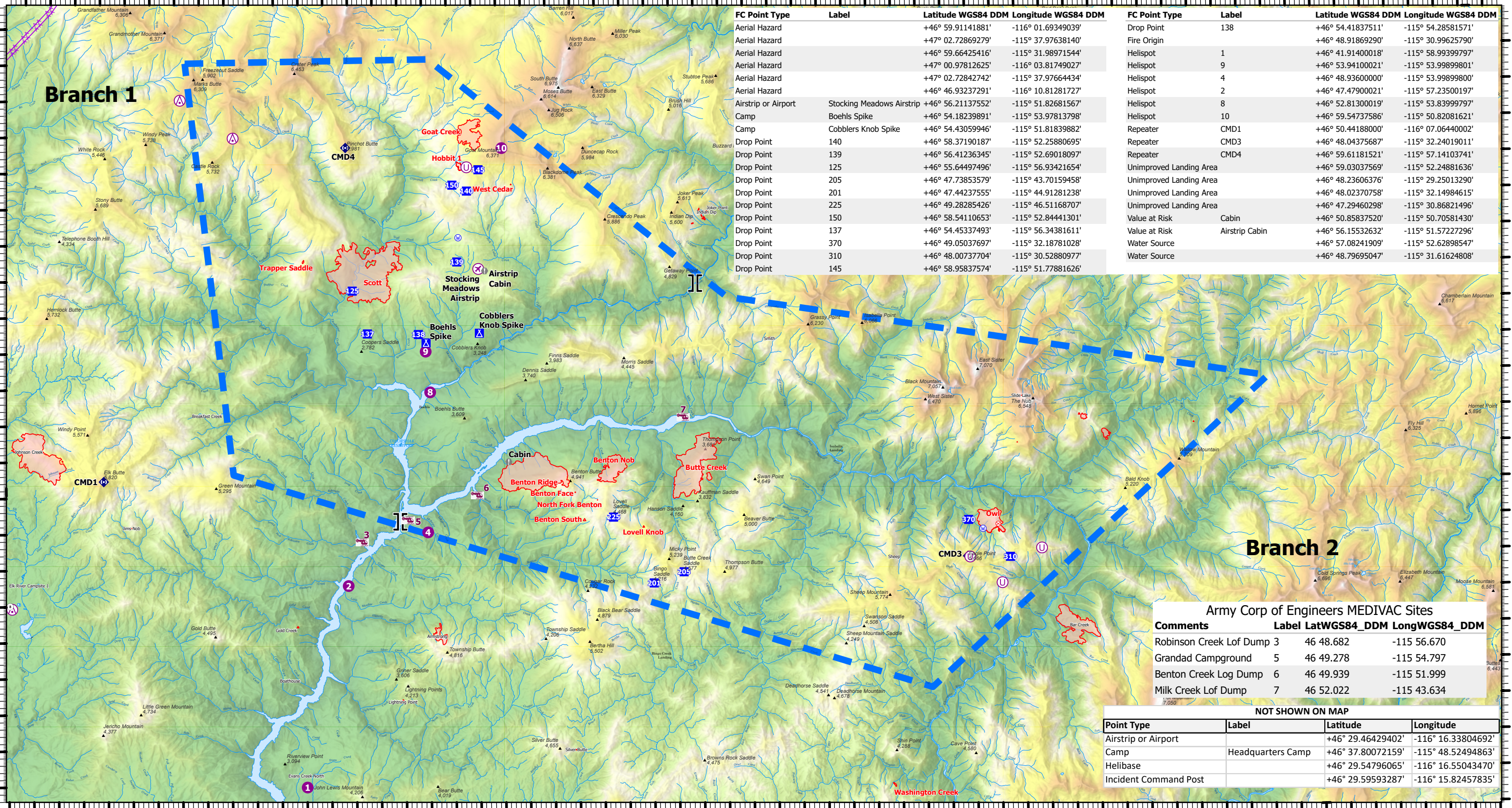


116°8'W 116°4'W 116°W 115°56'W 115°52'W 115°48'W 115°44'W 115°40'W 115°36.01'W 115°32'W 115°28'W 115°24'W 115°20'W 115°16'W 115°12'W

47°N  
46°56'N  
46°52'N  
46°48'N  
46°44'N

47°N  
46°56'N  
46°52'N  
46°48'N  
46°44'N



FC Point Type	Label	Latitude WGS84 DDM	Longitude WGS84 DDM	FC Point Type	Label	Latitude WGS84 DDM	Longitude WGS84 DDM
Aerial Hazard		+46° 59.91141881'	-116° 01.69349039'	Drop Point	138	+46° 54.41837511'	-115° 54.28581571'
Aerial Hazard		+47° 02.72869279'	-115° 37.97638140'	Fire Origin		+46° 48.91869290'	-115° 30.99625790'
Aerial Hazard		+46° 59.66425416'	-115° 31.98971544'	Helispot	1	+46° 41.91400018'	-115° 58.99399797'
Aerial Hazard		+47° 00.97812625'	-116° 03.81749027'	Helispot	9	+46° 53.94100021'	-115° 53.99899801'
Aerial Hazard		+47° 02.72842742'	-115° 37.97664434'	Helispot	4	+46° 48.93600000'	-115° 53.99899800'
Aerial Hazard		+46° 46.93237291'	-116° 10.81281727'	Helispot	2	+46° 47.47900021'	-115° 57.23500197'
Airstrip or Airport	Stocking Meadows Airstrip	+46° 56.21137552'	-115° 51.82681567'	Helispot	8	+46° 52.81300019'	-115° 53.83999797'
Camp	Boehls Spike	+46° 54.18239891'	-115° 53.97813798'	Helispot	10	+46° 59.54737568'	-115° 50.82081621'
Camp	Cobblers Knob Spike	+46° 54.43059946'	-115° 51.81839882'	Repeater	CMD1	+46° 50.44188000'	-116° 07.06440002'
Drop Point	140	+46° 58.37190187'	-115° 52.25880695'	Repeater	CMD3	+46° 48.04375687'	-115° 32.24019011'
Drop Point	139	+46° 56.41236345'	-115° 52.69018097'	Repeater	CMD4	+46° 59.61181521'	-115° 57.14103741'
Drop Point	125	+46° 55.64497496'	-115° 56.93421654'	Unimproved Landing Area		+46° 59.03037569'	-115° 52.24881636'
Drop Point	205	+46° 47.73853579'	-115° 43.70159458'	Unimproved Landing Area		+46° 48.23606376'	-115° 29.25013290'
Drop Point	201	+46° 47.44237555'	-115° 44.91281238'	Unimproved Landing Area		+46° 48.02370758'	-115° 32.14984615'
Drop Point	225	+46° 49.28285426'	-115° 46.51168707'	Unimproved Landing Area		+46° 47.29460298'	-115° 30.86821496'
Drop Point	150	+46° 58.54110653'	-115° 52.84441301'	Value at Risk	Cabin	+46° 50.85837520'	-115° 50.70581430'
Drop Point	137	+46° 54.45337493'	-115° 56.34381611'	Value at Risk	Airstrip Cabin	+46° 56.15532632'	-115° 51.57227296'
Drop Point	370	+46° 49.05037697'	-115° 32.18781028'	Water Source		+46° 57.08241909'	-115° 52.62898547'
Drop Point	310	+46° 48.00737704'	-115° 30.52880977'	Water Source		+46° 48.79695047'	-115° 31.61624808'
Drop Point	145	+46° 58.95837574'	-115° 51.77881626'				

Army Corp of Engineers MEDIVAC Sites

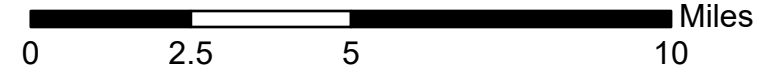
Comments	Label	LatWGS84_DDM	LongWGS84_DDM
Robinson Creek Lof Dump	3	46 48.682	-115 56.670
Grandad Campground	5	46 49.278	-115 54.797
Benton Creek Log Dump	6	46 49.939	-115 51.999
Milk Creek Lof Dump	7	46 52.022	-115 43.634

NOT SHOWN ON MAP

Point Type	Label	Latitude	Longitude
Airstrip or Airport		+46° 29.46429402'	-116° 16.33804692'
Camp	Headquarters Camp	+46° 37.80072159'	-115° 48.52494863'
Helibase		+46° 29.54796065'	-116° 16.55043470'
Incident Command Post		+46° 29.59593287'	-116° 15.82457835'

**Air Operations and Hazards**  
 July 21, 2021 Day  
 Cougar Rock Complex IDCTS-000623  
 4874.1 acres at 21:30, 07/19/2021

- Army Corps of Engineers MEDIVAC
- Aerial Hazard
- Airstrip or Airport
- Helispot
- Unimproved Landing Area
- Branch Break
- Drop Point
- Camp
- Fire Origin
- Value at Risk
- Repeater
- Water Source
- Aerial Hazard
- Temporary Flight Restriction
- Wildfire Daily Fire Perimeter



North Arrow

bhines 7/20/2021 2030  
 North American 1983 Datum, Lat/Long Grid  
 PCS: NAD 1983 UTM Zone 11N  
 Reference Scale: 1:63,360