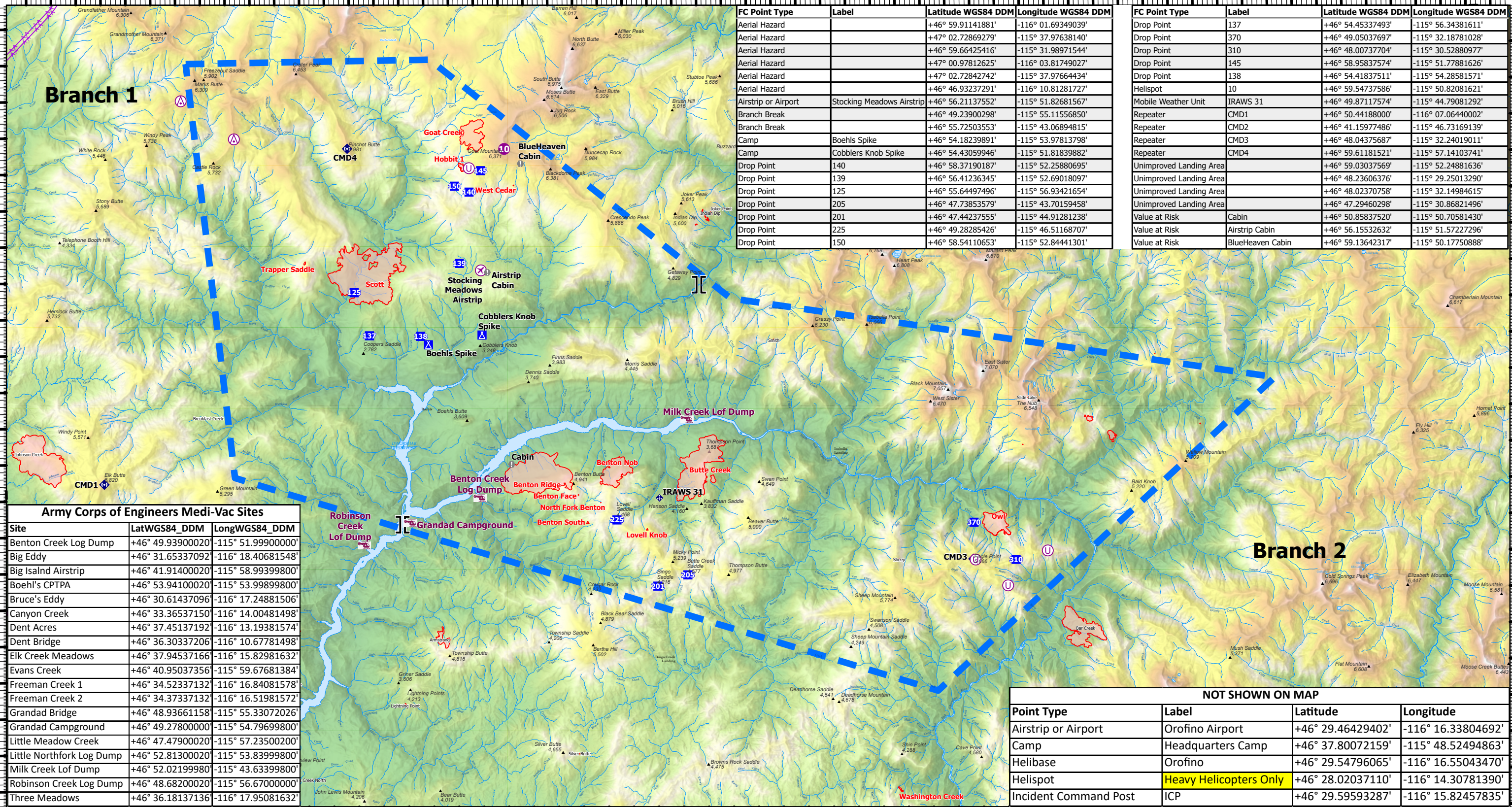


116°8'W 116°4'W 116°W 115°56'W 115°52'W 115°48'W 115°44'W 115°40'W 115°36.01'W 115°32'W 115°28'W 115°24'W 115°20'W 115°16'W 115°12'W

47°N
46°56'N
46°52'N
46°48'N
46°44'N

47°N
46°56'N
46°52'N
46°48'N
46°44'N



FC Point Type	Label	Latitude WGS84 DDM	Longitude WGS84 DDM
Aerial Hazard		+46° 59.91141881'	-116° 01.69349039'
Aerial Hazard		+47° 02.72869279'	-115° 37.97638140'
Aerial Hazard		+46° 59.66425416'	-115° 31.98971544'
Aerial Hazard		+47° 00.97812625'	-116° 03.81749027'
Aerial Hazard		+47° 02.72842742'	-115° 37.97664434'
Aerial Hazard		+46° 46.93237291'	-116° 10.81281727'
Airstrip or Airport	Stocking Meadows Airstrip	+46° 56.21137552'	-115° 51.82681567'
Branch Break		+46° 49.23900298'	-115° 55.11556850'
Branch Break		+46° 55.72503553'	-115° 43.06894815'
Camp	Boehls Spike	+46° 54.18239891'	-115° 53.97813798'
Camp	Cobblers Knob Spike	+46° 54.43059946'	-115° 51.81839882'
Drop Point	140	+46° 58.37190187'	-115° 52.25880695'
Drop Point	139	+46° 56.41236345'	-115° 52.69018097'
Drop Point	125	+46° 55.64497496'	-115° 56.93421654'
Drop Point	205	+46° 47.73853579'	-115° 43.70159458'
Drop Point	201	+46° 47.44237555'	-115° 44.91281238'
Drop Point	225	+46° 49.28285426'	-115° 46.51168707'
Drop Point	150	+46° 58.54110653'	-115° 52.84441301'

FC Point Type	Label	Latitude WGS84 DDM	Longitude WGS84 DDM
Drop Point	137	+46° 54.4537493'	-115° 56.34381611'
Drop Point	370	+46° 49.05037697'	-115° 32.18781028'
Drop Point	310	+46° 48.00737704'	-115° 30.52880977'
Drop Point	145	+46° 58.95837574'	-115° 51.77881626'
Drop Point	138	+46° 54.41837511'	-115° 54.28581571'
Helispot	10	+46° 59.54737586'	-115° 50.82081621'
Mobile Weather Unit	IRAWS 31	+46° 49.87117574'	-115° 44.79081292'
Repeater	CMD1	+46° 50.44188000'	-116° 07.06440002'
Repeater	CMD2	+46° 41.15977486'	-115° 46.73169139'
Repeater	CMD3	+46° 48.04375687'	-115° 32.24019011'
Repeater	CMD4	+46° 59.61181521'	-115° 57.14103741'
Unimproved Landing Area		+46° 59.03037569'	-115° 52.24881636'
Unimproved Landing Area		+46° 48.23606376'	-115° 29.25013290'
Unimproved Landing Area		+46° 48.02370758'	-115° 32.14984615'
Unimproved Landing Area		+46° 47.29460298'	-115° 30.86821496'
Value at Risk	Cabin	+46° 50.85837520'	-115° 50.70581430'
Value at Risk	Airstrip Cabin	+46° 56.15532632'	-115° 51.57227296'
Value at Risk	BlueHeaven Cabin	+46° 59.13642317'	-115° 50.17750888'

Army Corps of Engineers Medi-Vac Sites		
Site	LatWGS84_DDM	LongWGS84_DDM
Benton Creek Log Dump	+46° 49.93900020'	-115° 51.99900000'
Big Eddy	+46° 31.65337092'	-116° 18.40681548'
Big Isalnd Airstrip	+46° 41.91400020'	-115° 58.99399800'
Boehl's CPTA	+46° 53.94100020'	-115° 53.99899800'
Bruce's Eddy	+46° 30.61437096'	-116° 17.24881506'
Canyon Creek	+46° 33.36537150'	-116° 14.00481498'
Dent Acres	+46° 37.45137192'	-116° 13.19381574'
Dent Bridge	+46° 36.30337206'	-116° 10.67781498'
Elk Creek Meadows	+46° 37.94537166'	-116° 15.82981632'
Evans Creek	+46° 40.95037356'	-115° 59.67681384'
Freeman Creek 1	+46° 34.52337132'	-116° 16.84081578'
Freeman Creek 2	+46° 34.37337132'	-116° 16.51981572'
Grandad Bridge	+46° 48.93661158'	-115° 55.33072026'
Grandad Campground	+46° 49.27800000'	-115° 54.79699800'
Little Meadow Creek	+46° 47.47900020'	-115° 57.23500200'
Little Northfork Log Dump	+46° 52.81300020'	-115° 53.83999800'
Milk Creek Lof Dump	+46° 52.02199980'	-115° 43.63399800'
Robinson Creek Log Dump	+46° 48.68200020'	-115° 56.67000000'
Three Meadows	+46° 36.18137136'	-116° 17.95081632'

NOT SHOWN ON MAP			
Point Type	Label	Latitude	Longitude
Airstrip or Airport	Orofino Airport	+46° 29.46429402'	-116° 16.33804692'
Camp	Headquarters Camp	+46° 37.80072159'	-115° 48.52494863'
Helibase	Orofino	+46° 29.54796065'	-116° 16.55043470'
Helispot	Heavy Helicopters Only	+46° 28.02037110'	-116° 14.30781390'
Incident Command Post	ICP	+46° 29.59593287'	-116° 15.82457835'

116°8'W 116°4'W 116°W 115°56'W 115°52'W 115°48'W 115°44'W 115°40'W 115°36.01'W 115°32'W 115°28'W 115°24'W 115°20'W 115°16'W 115°12'W

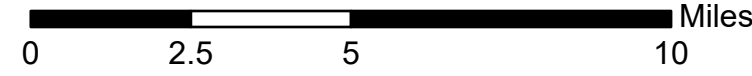
Air Operations and Hazards

July 23, 2021 Day

Cougar Rock Complex IDCTS-000623

5160 acres at 02:00, 07/22/2021

- Army Corps of Engineers MEDIVAC
- Aerial Hazard
- Airstrip or Airport
- Helispot
- Unimproved Landing Area
- Branch Break
- Drop Point
- Camp
- Value at Risk
- Mobile Weather Unit
- Repeater
- Aerial Hazard
- Temporary Flight Restriction
- Wildfire Daily Fire Perimeter



bhines 7/22/2021 2030
North American 1983 Datum, Lat/Long Grid
PCS: NAD 1983 UTM Zone 11N
Reference Scale: 1:63,360