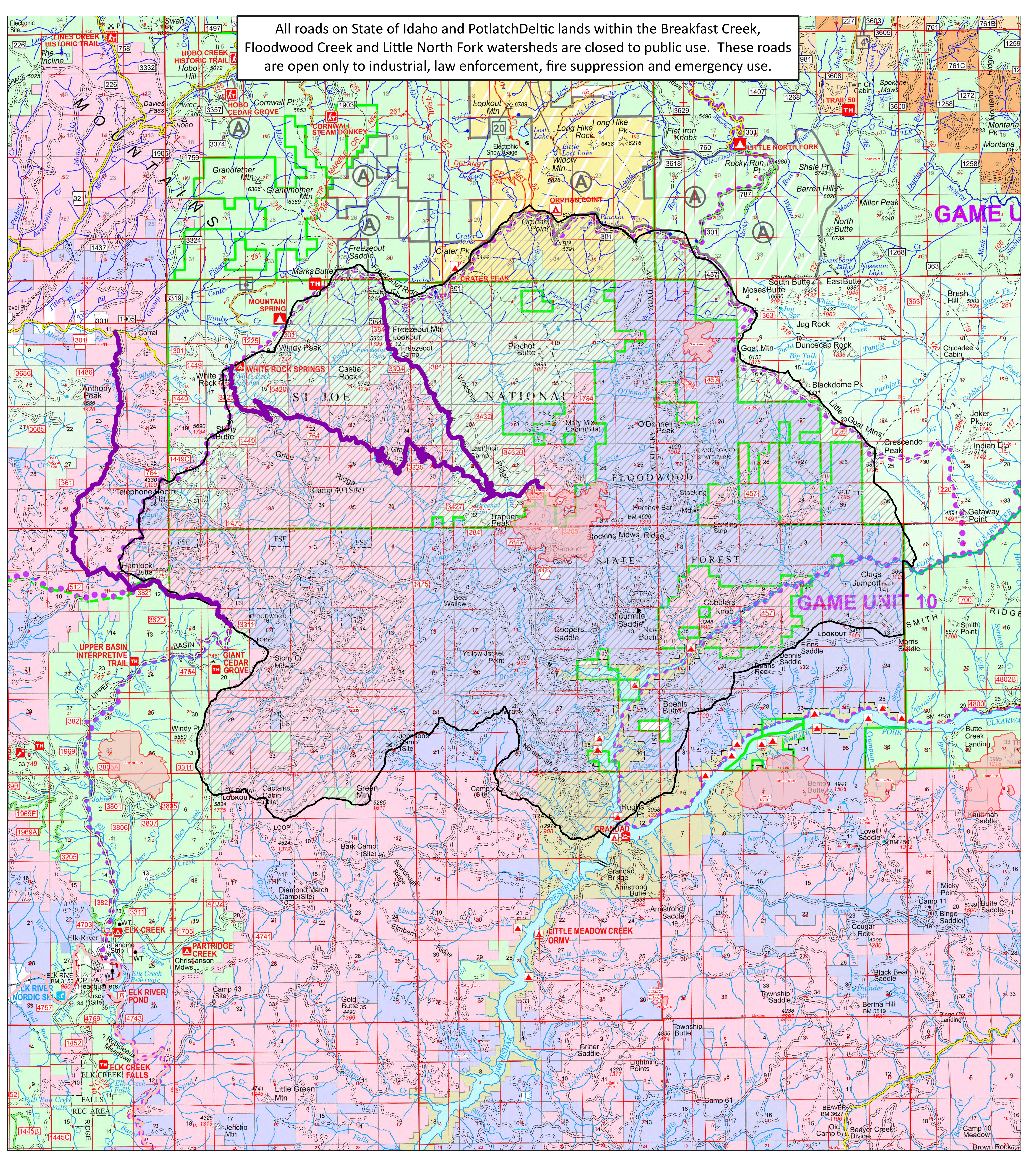


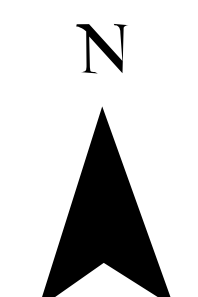
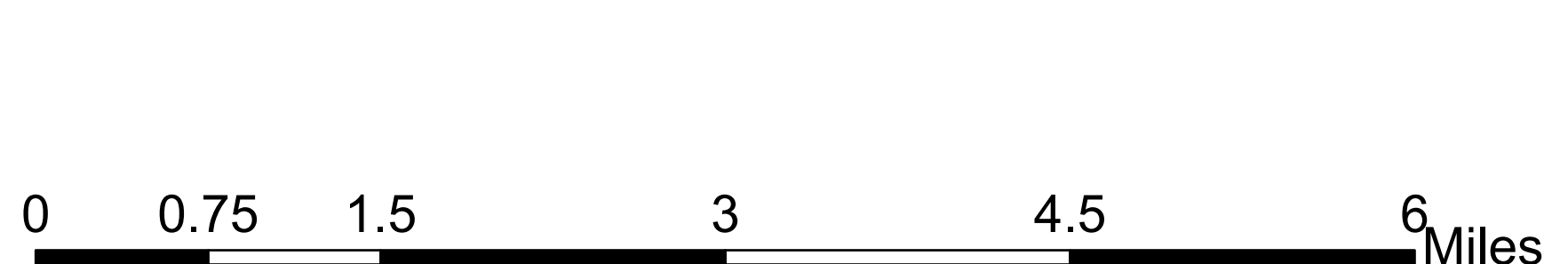
All roads on State of Idaho and PotlatchDeltic lands within the Breakfast Creek, Floodwood Creek and Little North Fork watersheds are closed to public use. These roads are open only to industrial, law enforcement, fire suppression and emergency use.



- Wildfire Daily Fire Perimeter
- State Road Closure
- USFS Closed Roads

Public Information Map

Cougar Rock Complex
IDCTS-000623
OP: 07/23/2021 Day



S. Tripp 7/23/2021 0905
North American 1983 Datum, Lat/Long Grid
PCS: NAD 1983 Idaho TM
Reference Scale: 1:0

