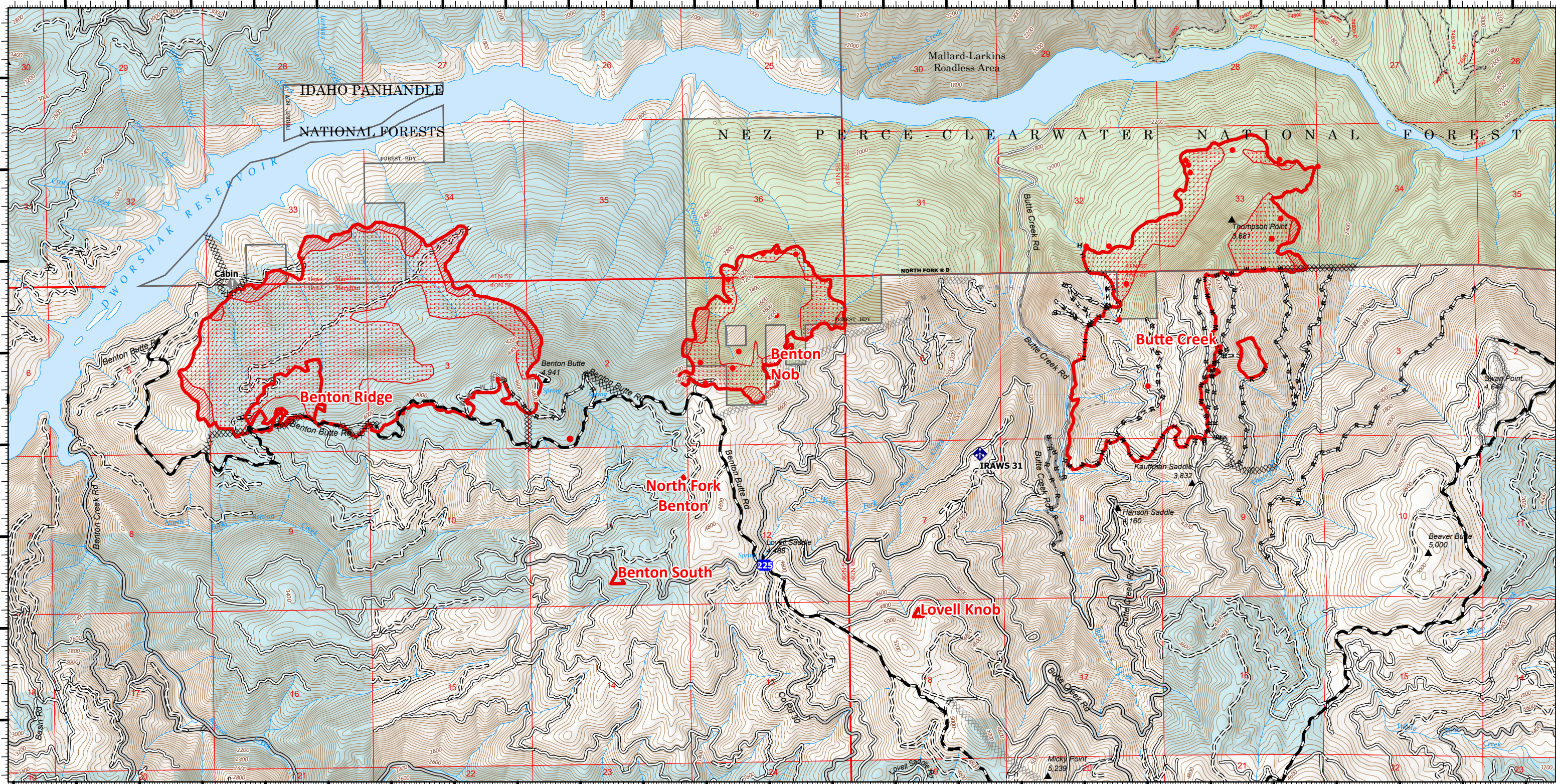


115°52'W 115°51.01'W 115°50'W 115°49'W 115°48'W 115°47'W 115°46'W 115°45'W 115°44'W 115°43'W 115°42'W 115°41'W

46°48.5'N 46°49'N 46°49.5'N 46°50'N 46°50.5'N 46°51'N 46°51.5'N 46°52'N

46°48.5'N 46°49'N 46°49.5'N 46°50'N 46°50.5'N 46°51'N 46°51.5'N 46°52'N

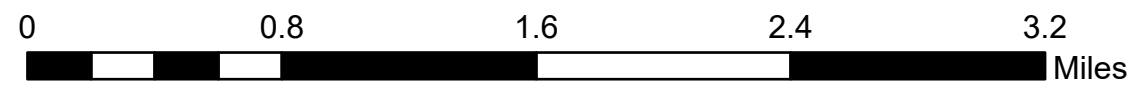


115°52'W 115°51.01'W 115°50'W 115°49'W 115°48'W 115°47'W 115°46'W 115°45'W 115°44'W 115°43'W 115°42'W 115°41'W

Benton Ridge Field Map

Cougar Rock Complex
 Branch 2
 IDCTS-000623
 OP: 07/23/2021

- | | | |
|-----------------------------------|---------------------------------|---|
| Drop Point | Planned Dozer Line | Primitive |
| Value at Risk | Planned Hand Line | Abandoned |
| Mobile Weather Unit | Planned Mixed Construction Line | Dirt (Not Paved) |
| Completed Dozer Line | Planned Road as Line | 20210722_0155_ButteCreek_IR_IntenseHeat |
| Completed Hand Line | Wildfire Daily Fire Perimeter | 20210722_0155_ButteCreek_IR_IsolatedHeat |
| Completed Mixed Construction Line | Primary | 20210722_0155_ButteCreek_IR_ScatteredHeat |
| Completed Road as Line | Secondary | |



S Tripp 7/23/2021 0522
 North American 1983 Datum, LatLong Grid
 PCS: NAD 1983 UTM Zone 11N
 Reference Scale: 1:24,000

