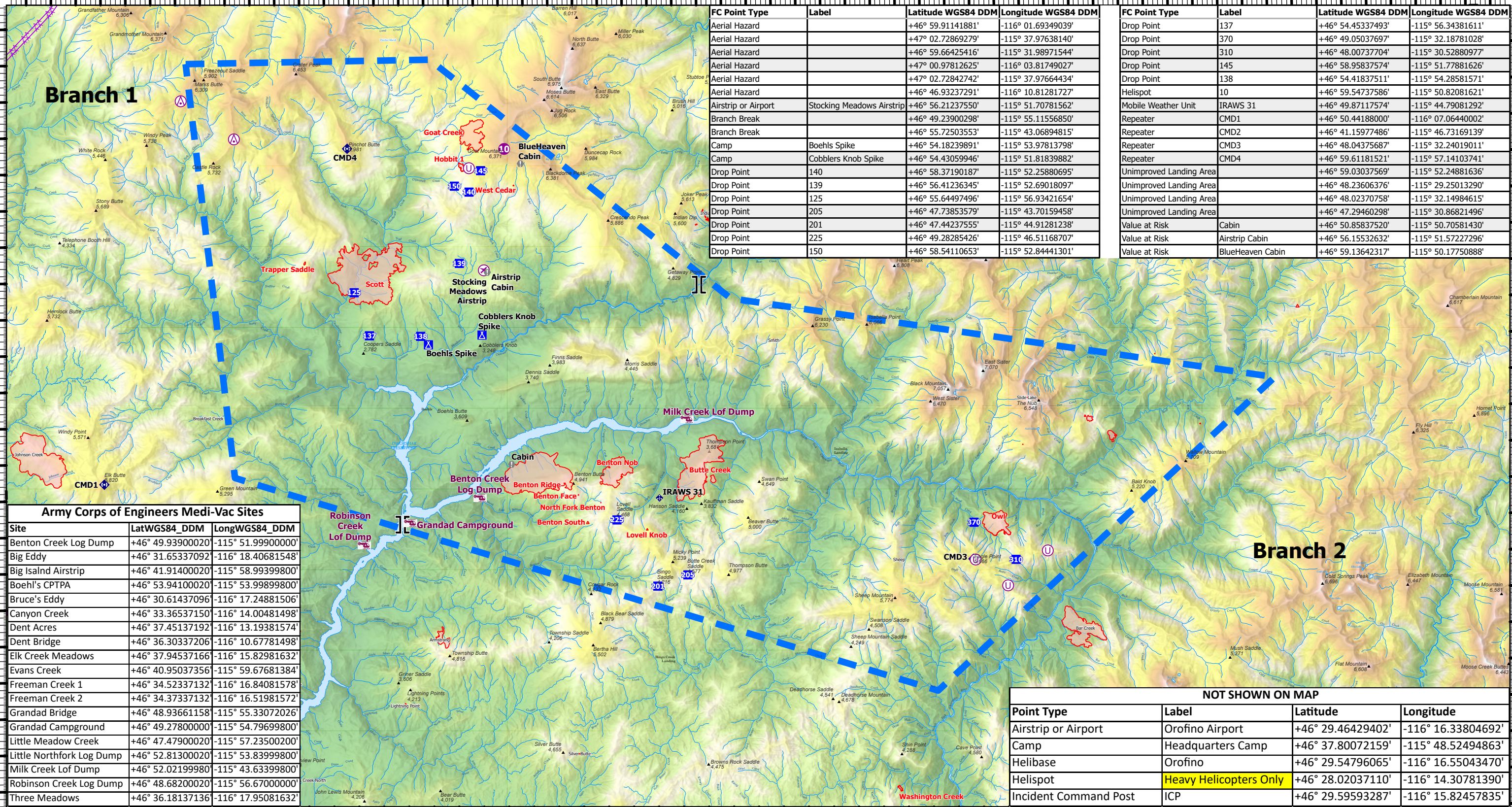


116°8'W 116°4'W 116°W 115°56'W 115°52'W 115°48'W 115°44'W 115°40'W 115°36.01'W 115°32'W 115°28'W 115°24'W 115°20'W 115°16'W 115°12'W

47°N  
46°56'N  
46°52'N  
46°48'N  
46°44'N

47°N  
46°56'N  
46°52'N  
46°48'N  
46°44'N



| FC Point Type       | Label                     | Latitude WGS84 DDM | Longitude WGS84 DDM |
|---------------------|---------------------------|--------------------|---------------------|
| Aerial Hazard       |                           | +46° 59.91141881'  | -116° 01.69349039'  |
| Aerial Hazard       |                           | +47° 02.72869279'  | -115° 37.97638140'  |
| Aerial Hazard       |                           | +46° 59.66425416'  | -115° 31.98971544'  |
| Aerial Hazard       |                           | +47° 00.97812625'  | -116° 03.81749027'  |
| Aerial Hazard       |                           | +47° 02.72842742'  | -115° 37.97664434'  |
| Aerial Hazard       |                           | +46° 46.93237291'  | -116° 10.81281727'  |
| Airstrip or Airport | Stocking Meadows Airstrip | +46° 56.21237550'  | -115° 51.70781562'  |
| Branch Break        |                           | +46° 49.23900298'  | -115° 55.11556850'  |
| Branch Break        |                           | +46° 55.72503553'  | -115° 43.06894815'  |
| Camp                | Boehls Spike              | +46° 54.18239891'  | -115° 53.97813798'  |
| Camp                | Cobblers Knob Spike       | +46° 54.43059946'  | -115° 51.81839882'  |
| Drop Point          | 140                       | +46° 58.37190187'  | -115° 52.25880695'  |
| Drop Point          | 139                       | +46° 56.41236345'  | -115° 52.69018097'  |
| Drop Point          | 125                       | +46° 55.64497496'  | -115° 56.93421654'  |
| Drop Point          | 205                       | +46° 47.73853579'  | -115° 43.70159458'  |
| Drop Point          | 201                       | +46° 47.44237555'  | -115° 44.91281238'  |
| Drop Point          | 225                       | +46° 49.28285426'  | -115° 46.51168707'  |
| Drop Point          | 150                       | +46° 58.54110653'  | -115° 52.84441301'  |

| FC Point Type           | Label             | Latitude WGS84 DDM | Longitude WGS84 DDM |
|-------------------------|-------------------|--------------------|---------------------|
| Drop Point              | 137               | +46° 54.45337493'  | -115° 56.34381611'  |
| Drop Point              | 370               | +46° 49.05037697'  | -115° 32.18781028'  |
| Drop Point              | 310               | +46° 48.00737704'  | -115° 30.52880977'  |
| Drop Point              | 145               | +46° 58.95837574'  | -115° 51.77881626'  |
| Drop Point              | 138               | +46° 54.41837511'  | -115° 54.28581571'  |
| Helispot                | 10                | +46° 59.54737586'  | -115° 50.82081621'  |
| Mobile Weather Unit     | IRAWS 31          | +46° 49.87117574'  | -115° 44.79081292'  |
| Repeater                | CMD1              | +46° 50.44188000'  | -116° 07.06440002'  |
| Repeater                | CMD2              | +46° 41.15977486'  | -115° 46.73169139'  |
| Repeater                | CMD3              | +46° 48.04375687'  | -115° 32.24019011'  |
| Repeater                | CMD4              | +46° 59.61181521'  | -115° 57.14103741'  |
| Unimproved Landing Area |                   | +46° 59.03037569'  | -115° 52.24881636'  |
| Unimproved Landing Area |                   | +46° 48.23606376'  | -115° 29.25013290'  |
| Unimproved Landing Area |                   | +46° 48.02370758'  | -115° 32.14984615'  |
| Unimproved Landing Area |                   | +46° 47.29460298'  | -115° 30.86821496'  |
| Value at Risk           | Cabin             | +46° 50.85837520'  | -115° 50.70581430'  |
| Value at Risk           | Airstrip Cabin    | +46° 56.15532632'  | -115° 51.57227296'  |
| Value at Risk           | Blue Heaven Cabin | +46° 59.13642317'  | -115° 50.17750888'  |

| Army Corps of Engineers Medi-Vac Sites |                   |                    |
|--|-------------------|--------------------|
| Site                                   | LatWGS84_DDM      | LongWGS84_DDM      |
| Benton Creek Log Dump                  | +46° 49.93900020' | -115° 51.99900000' |
| Big Eddy                               | +46° 31.65337092' | -116° 18.40681548' |
| Big Isalnd Airstrip                    | +46° 41.91400020' | -115° 58.99399800' |
| Boehl's CPTA                           | +46° 53.94100020' | -115° 53.99899800' |
| Bruce's Eddy                           | +46° 30.61437096' | -116° 17.24881506' |
| Canyon Creek                           | +46° 33.36537150' | -116° 14.00481498' |
| Dent Acres                             | +46° 37.45137192' | -116° 13.19381574' |
| Dent Bridge                            | +46° 36.30337206' | -116° 10.67781498' |
| Elk Creek Meadows                      | +46° 37.94537166' | -116° 15.82981632' |
| Evans Creek                            | +46° 40.95037356' | -115° 59.67681384' |
| Freeman Creek 1                        | +46° 34.52337132' | -116° 16.84081578' |
| Freeman Creek 2                        | +46° 34.37337132' | -116° 16.51981572' |
| Grandad Bridge                         | +46° 48.93661158' | -115° 55.33072026' |
| Grandad Campground                     | +46° 49.27800000' | -115° 54.79699800' |
| Little Meadow Creek                    | +46° 47.47900020' | -115° 57.23500200' |
| Little Northfork Log Dump              | +46° 52.81300020' | -115° 53.83999800' |
| Milk Creek Lof Dump                    | +46° 52.02199980' | -115° 43.63399800' |
| Robinson Creek Log Dump                | +46° 48.68200020' | -115° 56.67000000' |
| Three Meadows                          | +46° 36.18137136' | -116° 17.95081632' |

| NOT SHOWN ON MAP      |                        |                   |                    |
|-----------------------|------------------------|-------------------|--------------------|
| Point Type            | Label                  | Latitude          | Longitude          |
| Airstrip or Airport   | Orofino Airport        | +46° 29.46429402' | -116° 16.33804692' |
| Camp                  | Headquarters Camp      | +46° 37.80072159' | -115° 48.52494863' |
| Helibase              | Orofino                | +46° 29.54796065' | -116° 16.55043470' |
| Helispot              | Heavy Helicopters Only | +46° 28.02037110' | -116° 14.30781390' |
| Incident Command Post | ICP                    | +46° 29.59593287' | -116° 15.82457835' |

116°8'W 116°4'W 116°W 115°56'W 115°52'W 115°48'W 115°44'W 115°40'W 115°36.01'W 115°32'W 115°28'W 115°24'W 115°20'W 115°16'W 115°12'W

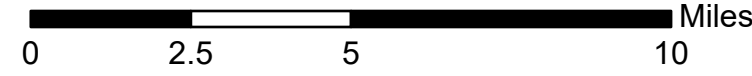
**Air Operations and Hazards**

July 24, 2021 Day

Cougar Rock Complex IDCTS-000623

5160 acres at 02:00, 07/22/2021

- Army Corps of Engineers MEDIVAC
- Aerial Hazard
- Airstrip or Airport
- Helispot
- Unimproved Landing Area
- Branch Break
- Drop Point
- Camp
- Value at Risk
- Mobile Weather Unit
- Repeater
- Aerial Hazard
- Temporary Flight Restriction
- Wildfire Daily Fire Perimeter



bhines 7/23/2021 1940  
North American 1983 Datum, Lat/Long Grid  
PCS: NAD 1983 UTM Zone 11N  
Reference Scale: 1:63,360