

**Ownership\_20210725**

**Type**

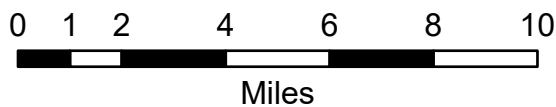
- BLM
- BOR
- COE
- IR
- LU\_DOI
- LU\_USDA
- MIL
- NPS
- NWR
- OTHER
- PRIVATE
- Private Industrial
- STATE
- STATEFG
- STATEOTH
- STATEPR
- USFS

Type	IncidentName	Acres	Fire Area Totals
STATE	Benton Face	0.22	
Private Industrial	Benton Nob	84.60	
STATE	Benton Nob	57.43	
USFS	Benton Nob	450.25	
COE	Benton Ridge	104.59	
PRIVATE	Benton Ridge	27.65	
STATE	Benton Ridge	1696.27	
STATE	Benton South	2.00	
STATE	North Fork Benton	0.10	
Total Benton			2423.11
Private Industrial	Butte Creek	536.26	
USFS	Butte Creek	574.37	
Total Butte Creek			1110.63
STATE	Goat Creek	401.59	
USFS	Goat Creek	1.21	
Total Goat Creek			402.79
STATE	Hobbit 1	28.04	
Private Industrial	Lovell Knob	1.00	
USFS	Lovell Knob	290.04	
Private Industrial	Scott	159.41	
STATE	Scott	1654.34	
USFS	Scott	181.14	
Total Scott			1994.89
USFS	Trapper Saddle	2.07	
USFS	Washington Creek	6.50	
STATE	West Cedar	0.30	
Total Fire Acres		6296.38	

IncidentName	Type				
	Private	State	USFS	COE	
Benton Ridge				104.59	
Benton Ridge	27.65				
Benton Nob	84.60				
Butte Creek	536.26				
Lovell knob	1.00				
Scott	159.41				
Benton Face		0.22			
Benton Nob		57.43			
Benton Ridge		1696.27			
Benton South		2.00			
North Fork Benton		0.10			
Goat Creek		401.59			
Hobbit 1		28.04			
Scott		1654.34			
West Cedar		0.30			
Benton Nob			450.25		
Butte Creek			574.37		
Goat Creek			1.21		
Owl			290.04		
Scott			181.14		
Trapper Saddle			2.07		
Washington Creek			6.50		
Total Fire Acres		808.92	3840.29	1505.584	104.59

**Total Acres by Ownership - Overview**

Cougar Rock Complex  
IDCTS-000623

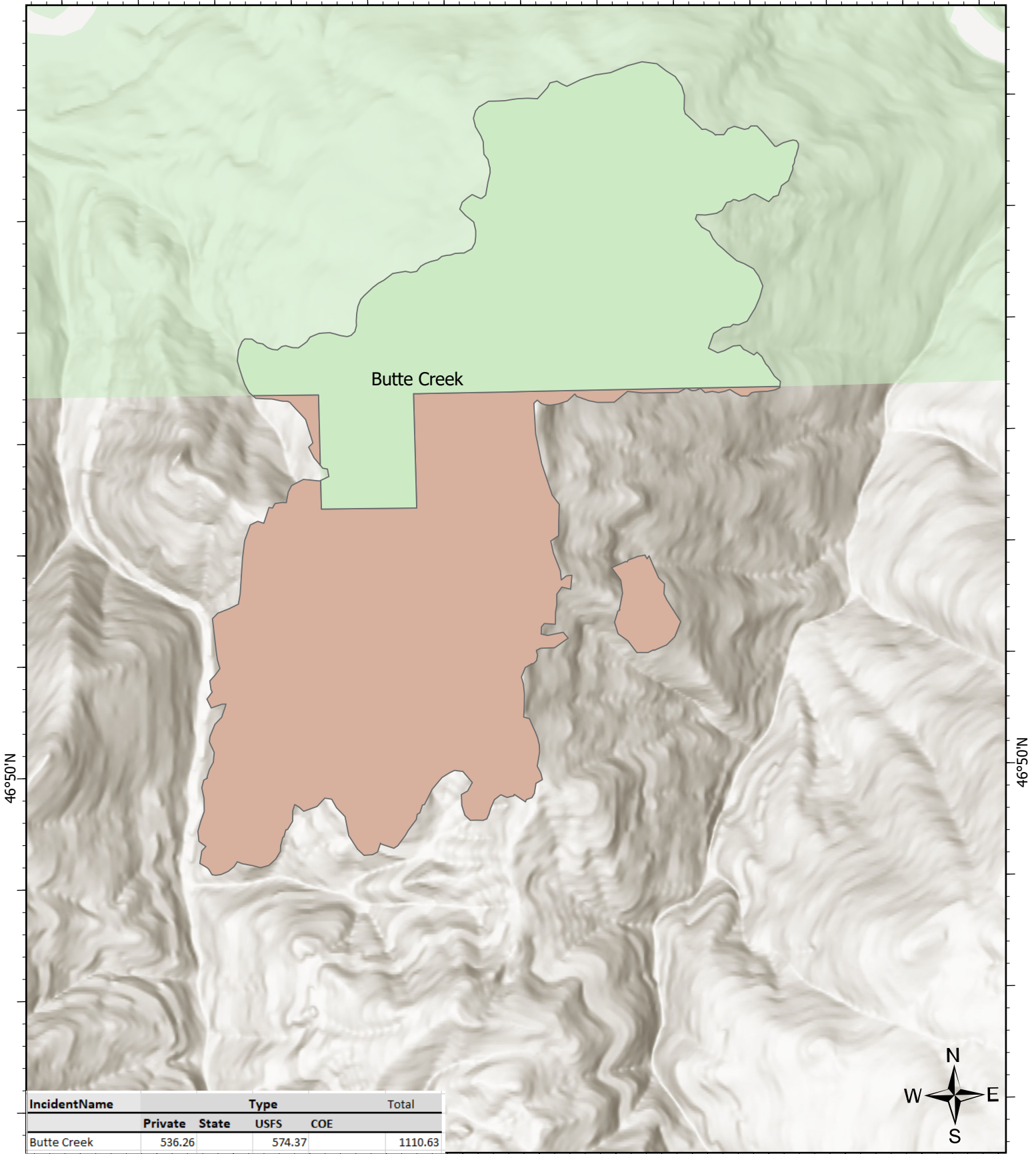


J Connelley 7/25/2021 0758  
North American 1983 Datum, LatLong Grid  
PCS: NAD 1983 Idaho TM  
Reference Scale: 1:0

Esri, NASA, NGA, USGS



115°42.5'W



IncidentName	Type			Total
	Private	State	USFS	
Butte Creek	536.26		574.37	1110.63



115°42.5'W

# Ownership

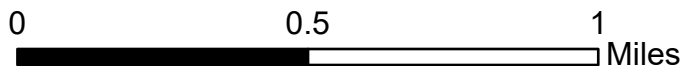
Cougar Rock Complex

IDCTS-000623

July 25, 2021

5972 acres at 0130, 07/24/2021

- Private Industrial
- USFS

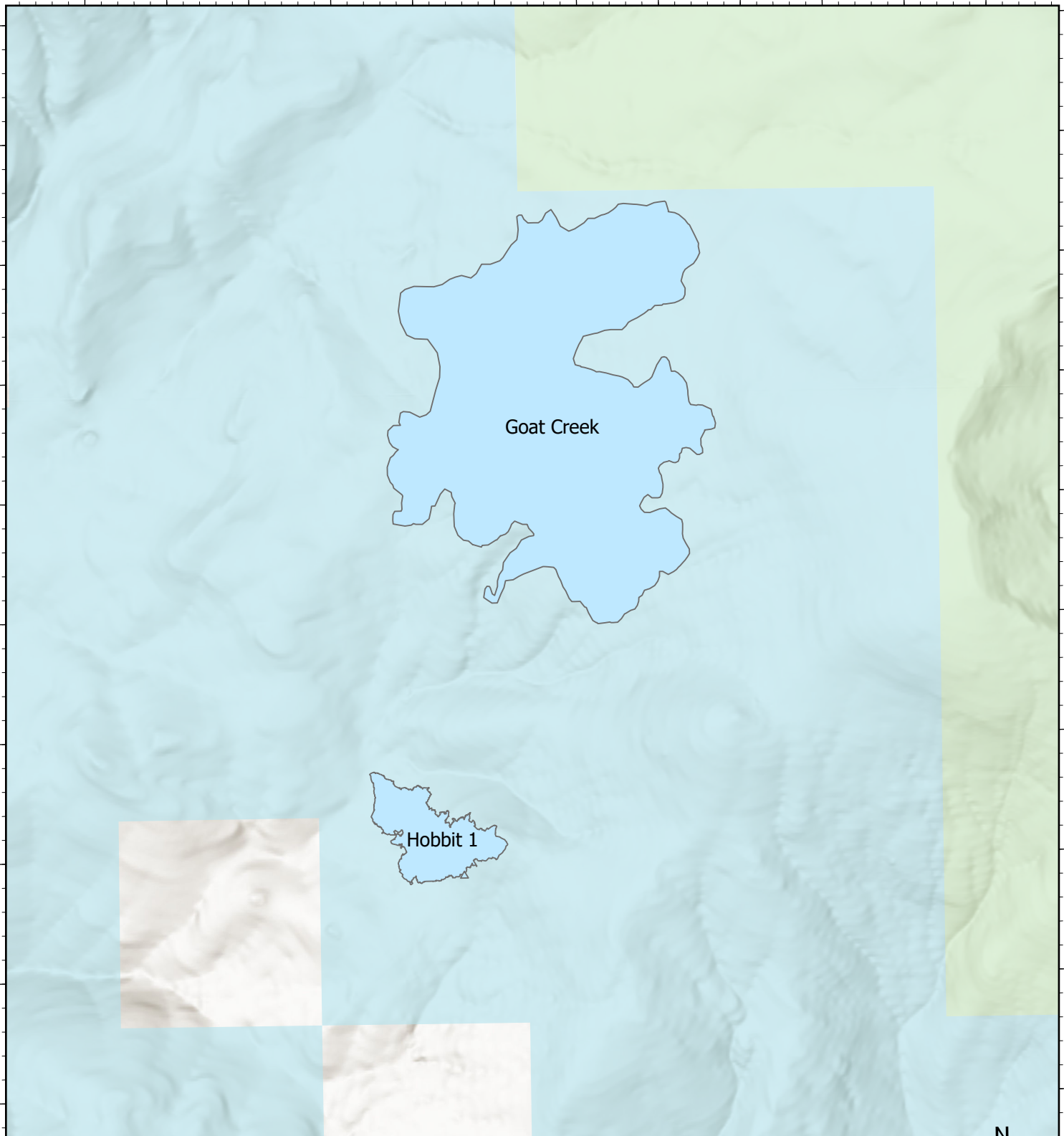


JConnelley  
 7/25/2021 0829  
 North American 1983 Datum

115°52.5'W

47°N

47°N



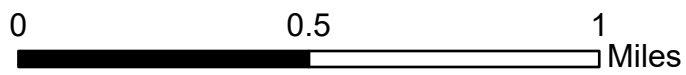
IncidentName	Type				Total
	Private	State	USFS	COE	
Goat Creek		401.59	1.21		402.79
Hobbit 1		28.04			28.04



115°52.5'W

**Ownership**  
 Cougar Rock Complex  
 IDCTS-000623  
 July 25, 2021  
 5972 acres at 0130, 07/24/2021

 STATE



JConnelley  
 7/25/2021 0832  
 North American 1983 Datum

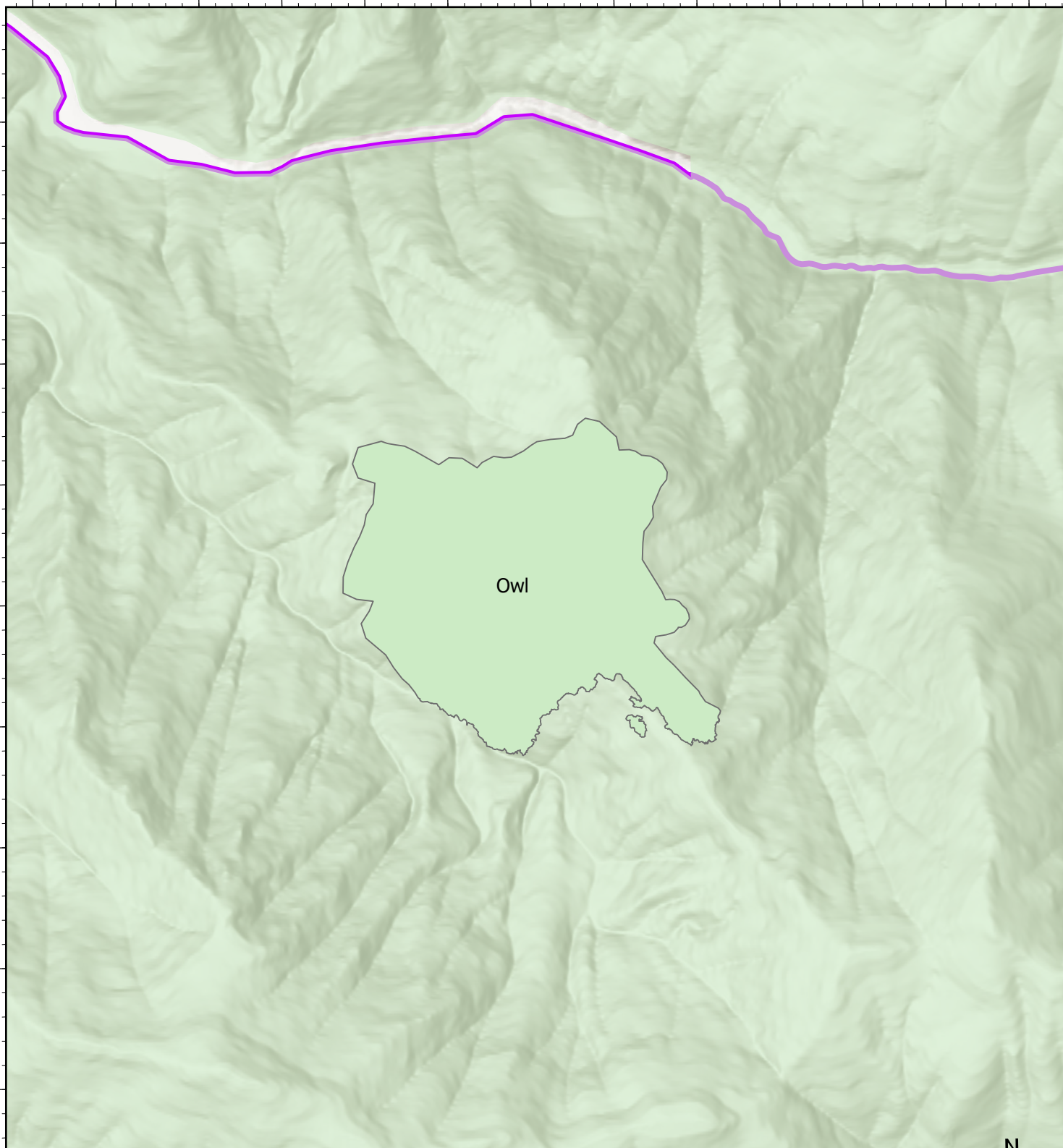


115°32.5'W

115°30'W

46°50'N

46°50'N



Owl

IncidentName	Type				Total
	Private	State	USFS	COE	
Owl			290.04		290.04



115°32.5'W

115°30'W

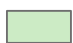
### Ownership

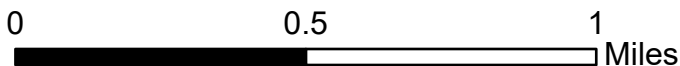
Cougar Rock Complex

IDCTS-000623

July 25, 2021

5972 acres at 0130, 07/24/2021

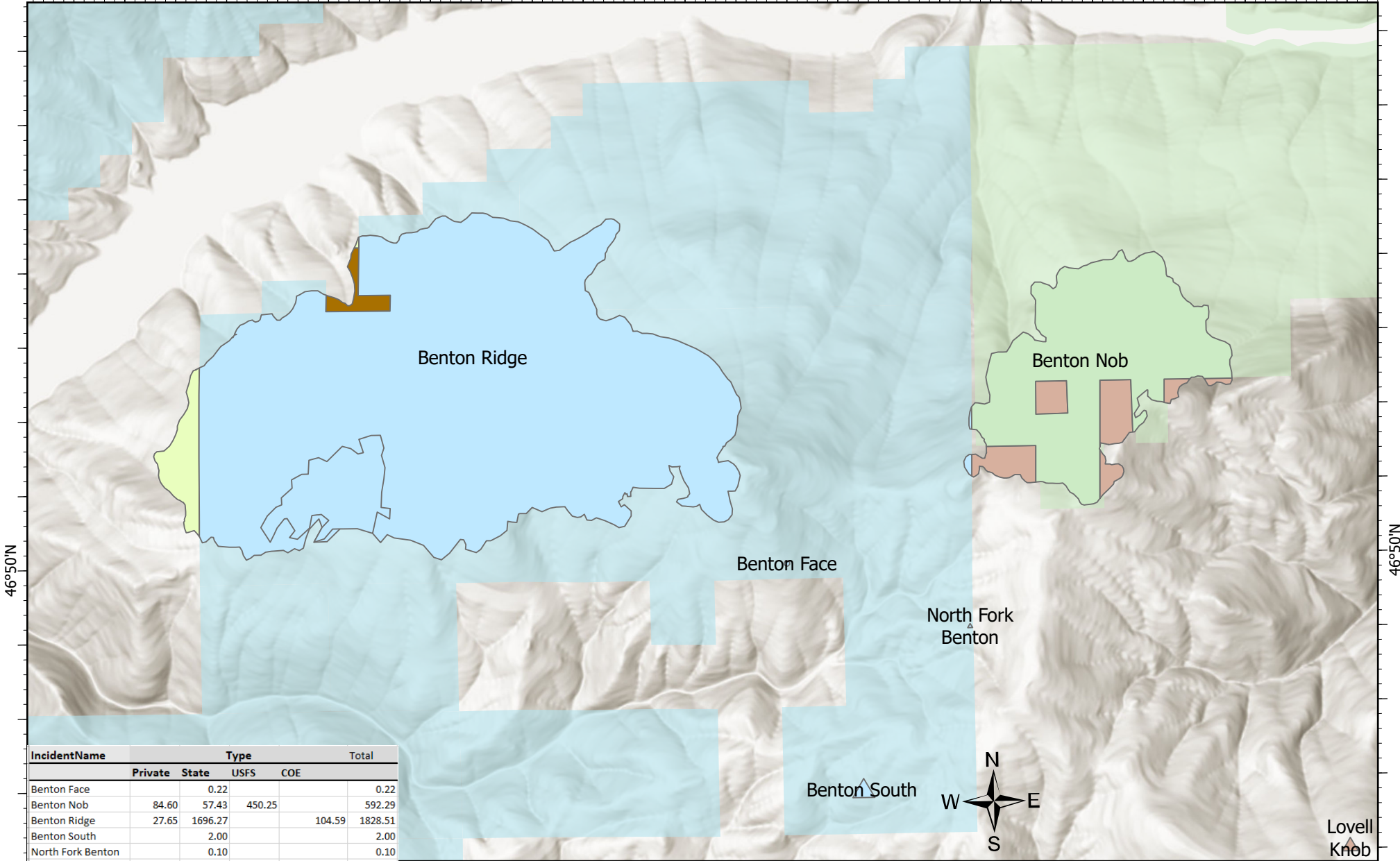
-  USFS IA
-  USFS



JConnelley  
7/25/2021 0835  
North American 1983 Datum

115°50'W

115°47.5'W



46°50'N

46°50'N

IncidentName	Type				Total
	Private	State	USFS	COE	
Benton Face		0.22			0.22
Benton Nob	84.60	57.43	450.25		592.29
Benton Ridge	27.65	1696.27		104.59	1828.51
Benton South		2.00			2.00
North Fork Benton		0.10			0.10



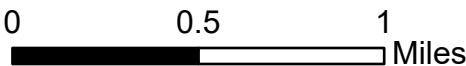
Lovell Knob

115°50'W

115°47.5'W

# Ownership

Cougar Rock Complex  
 IDCTS-000623  
 July 25, 2021  
 5972 acres at 0130, 07/24/2021



JConnelley  
 7/25/2021 0824  
 North American 1983 Datum

- COE
- PRIVATE
- Private Industrial
- STATE
- USFS



115°57.5'W

115°55'W

46°57.5'N

46°57.5'N

46°55'N

46°55'N

Trapper Saddle

Scott

IncidentName	Type				Total
	Private	State	USFS	COE	
Scott	159.41	1654.34	181.14		1994.89
Trapper Saddle			2.07		2.07



115°57.5'W

115°55'W



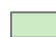
# Ownership

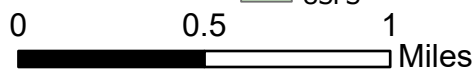
Cougar Rock Complex

IDCTS-000623

July 25, 2021

5972 acres at 0130, 07/24/2021

-  Private Industrial
-  STATE
-  USFS



JConnelley  
7/25/2021 0818  
North American 1983 Datum