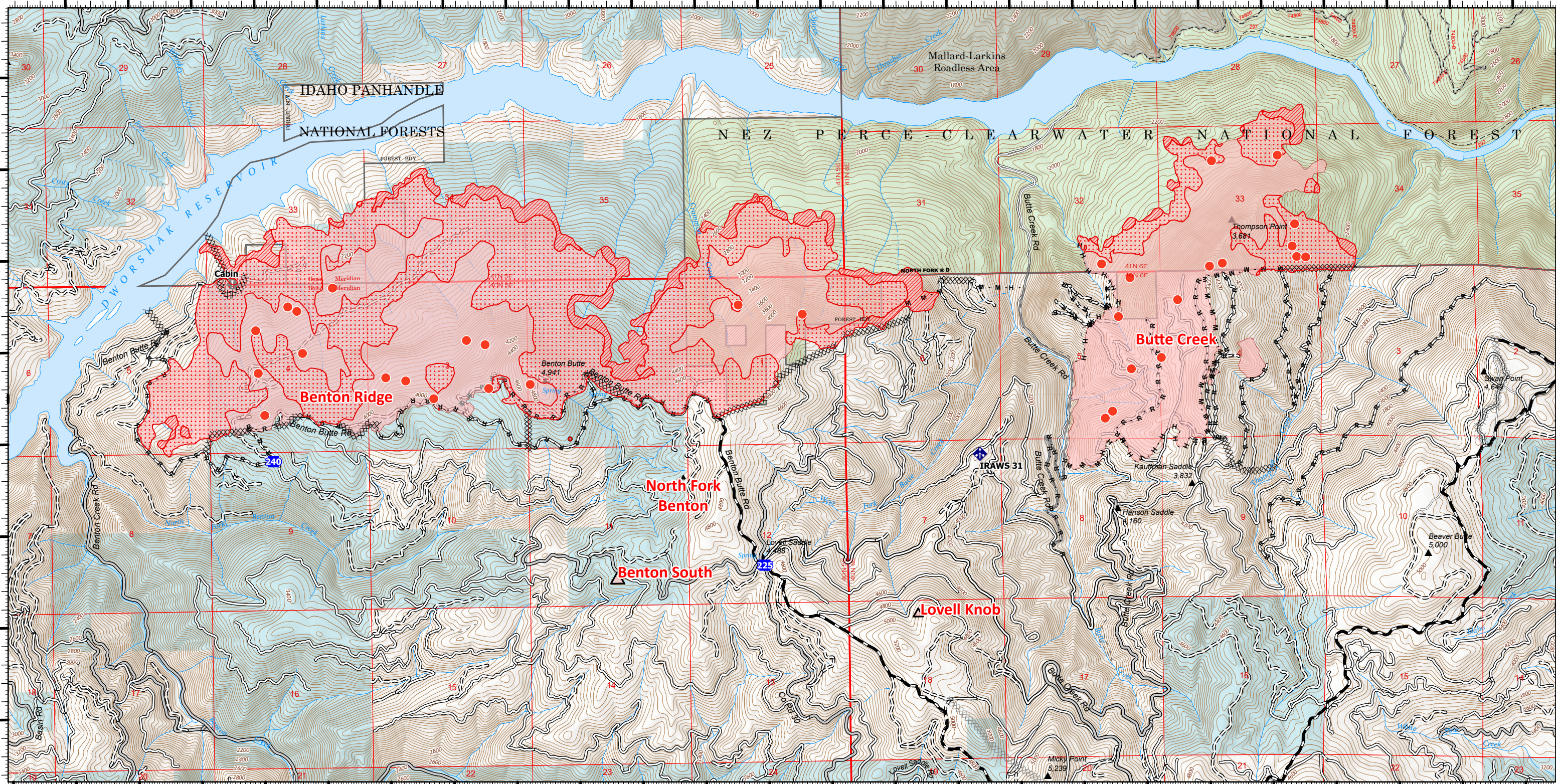


115°52'W 115°51.01'W 115°50'W 115°49'W 115°48'W 115°47'W 115°46'W 115°45'W 115°44'W 115°43'W 115°42'W 115°41'W

46°48.5'N 46°49'N 46°49.5'N 46°50'N 46°50.5'N 46°51'N 46°51.5'N 46°52'N

46°48.5'N 46°49'N 46°49.5'N 46°50'N 46°50.5'N 46°51'N 46°51.5'N 46°52'N



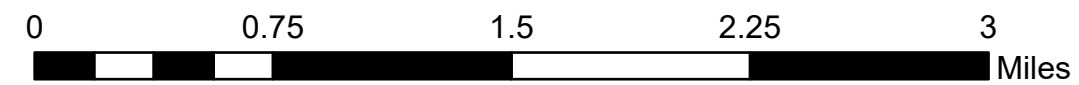
115°52'W 115°51.01'W 115°50'W 115°49'W 115°48'W 115°47'W 115°46'W 115°45'W 115°44'W 115°43'W 115°42'W 115°41'W

### Benton Ridge Field Map

Cougar Rock Complex  
 Branch 2  
 IDCTS-000623  
 OP: 07/27/2021  
 6741 acres at 0115, 07/27/2021

- Drop Point
- ⬇ Value at Risk
- ◆ Mobile Weather Unit
- XXXX Completed Dozer Line
- H - H Completed Hand Line
- M - M Completed Mixed Construction Line
- R - R Completed Road as Line
- XXXX Planned Dozer Line
- M - M Planned Mixed Construction Line
- Planned Road as Line
- Contained Line

- Wildfire Daily Fire Perimeter
- Primary
- Secondary
- Primitive
- Abandoned
- Dirt (Not Paved)
- 20210727\_0100\_CougarRockComplex\_Scott\_IR\_ScatteredHeat
- 20210727\_0115\_CougarRockComplex\_ButteCreek\_IR\_IntenseHeat
- 20210727\_0115\_CougarRockComplex\_ButteCreek\_IR\_IsolatedHeat
- 20210727\_0115\_CougarRockComplex\_ButteCreek\_IR\_ScatteredHeat



7/27/2021 0513  
 North American 1983 Datum, LatLong Grid  
 PCS: NAD 1983 UTM Zone 11N

