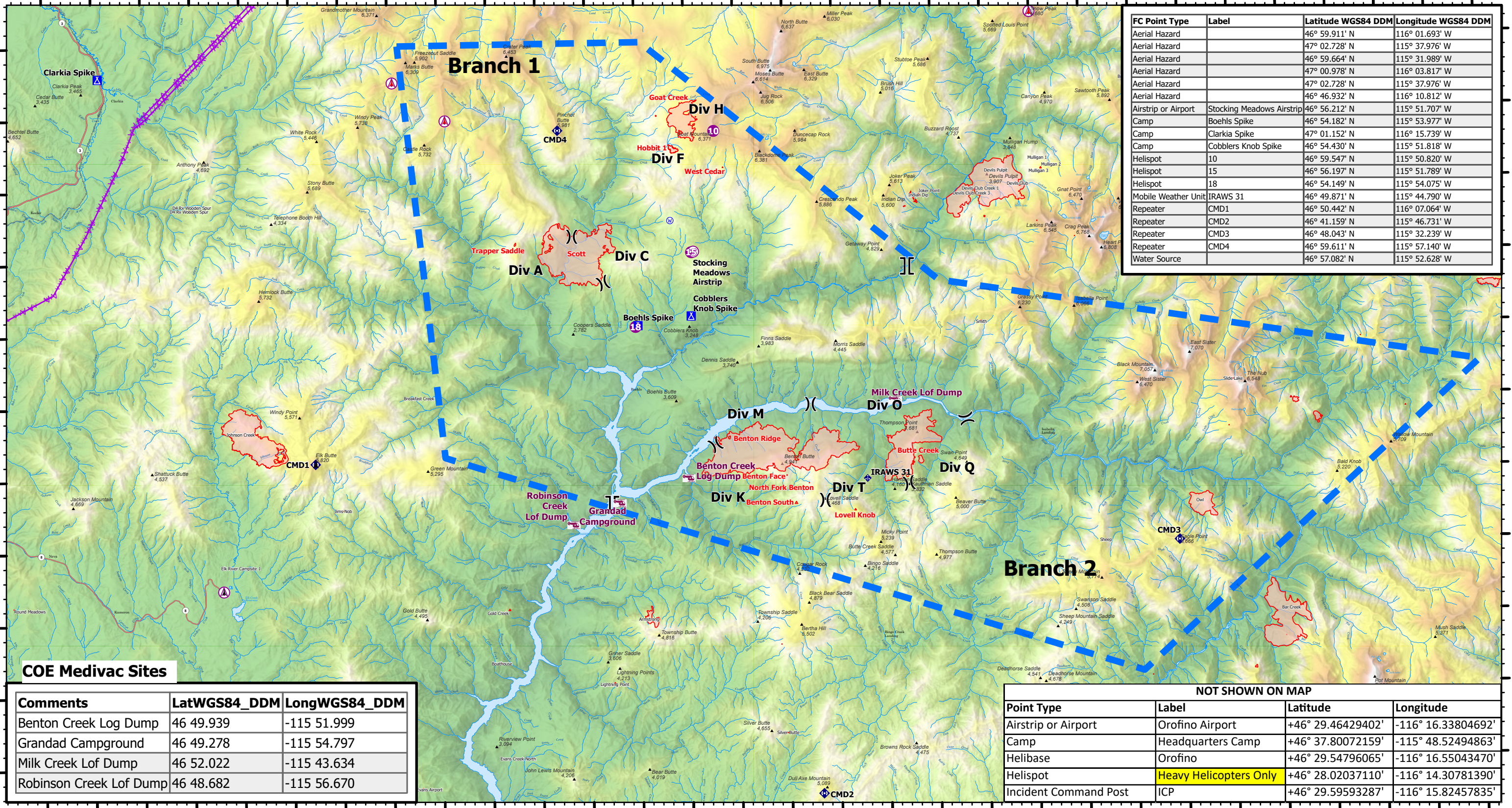


116°16'W 116°12'W 116°8'W 116°4'W 116°W 115°56'W 115°52'W 115°48'W 115°44'W 115°40'W 115°36.01'W 115°32'W 115°28'W 115°24'W 115°20'W

47°N
46°56'N
46°52'N
46°48'N
46°44'N

47°N
46°56'N
46°52'N
46°48'N
46°44'N



FC Point Type	Label	Latitude WGS84 DDM	Longitude WGS84 DDM
Aerial Hazard		46° 59.911' N	116° 01.693' W
Aerial Hazard		47° 02.728' N	115° 37.976' W
Aerial Hazard		46° 59.664' N	115° 31.989' W
Aerial Hazard		47° 00.978' N	116° 03.817' W
Aerial Hazard		47° 02.728' N	115° 37.976' W
Aerial Hazard		46° 46.932' N	116° 10.812' W
Airstrip or Airport	Stocking Meadows Airstrip	46° 56.212' N	115° 51.707' W
Camp	Boehls Spike	46° 54.182' N	115° 53.977' W
Camp	Clarkia Spike	47° 01.152' N	116° 15.739' W
Camp	Cobblers Knob Spike	46° 54.430' N	115° 51.818' W
Helispot	10	46° 59.547' N	115° 50.820' W
Helispot	15	46° 56.197' N	115° 51.789' W
Helispot	18	46° 54.149' N	115° 54.075' W
Mobile Weather Unit	IRAWS 31	46° 49.871' N	115° 44.790' W
Repeater	CMD1	46° 50.442' N	116° 07.064' W
Repeater	CMD2	46° 41.159' N	115° 46.731' W
Repeater	CMD3	46° 48.043' N	115° 32.239' W
Repeater	CMD4	46° 59.611' N	115° 57.140' W
Water Source		46° 57.082' N	115° 52.628' W

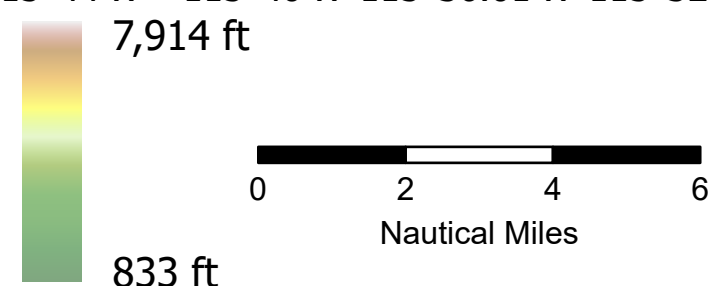
COE Medivac Sites

Comments	LatWGS84_DDM	LongWGS84_DDM
Benton Creek Log Dump	46 49.939	-115 51.999
Grandad Campground	46 49.278	-115 54.797
Milk Creek Lof Dump	46 52.022	-115 43.634
Robinson Creek Lof Dump	46 48.682	-115 56.670

NOT SHOWN ON MAP			
Point Type	Label	Latitude	Longitude
Airstrip or Airport	Orofino Airport	+46° 29.46429402'	-116° 16.33804692'
Camp	Headquarters Camp	+46° 37.80072159'	-115° 48.52494863'
Helibase	Orofino	+46° 29.54796065'	-116° 16.55043470'
Helispot	Heavy Helicopters Only	+46° 28.02037110'	-116° 14.30781390'
Incident Command Post	ICP	+46° 29.59593287'	-116° 15.82457835'

Air Operations and Hazards
7/29/2021
Cougar Rock Complex IDCTS-000623
6.739 acres at 0115, 07/27/2021

- Army Corps of Engineers MEDIVAC
- Aerial Hazard
- Airstrip or Airport
- Helispot
- Division Break
- Branch Break
- Camp
- Mobile Weather Unit
- Repeater
- Water Source
- Tower 30' - 200'
- Tower > 200'
- Towers of Unknown Height
- Aerial Hazard
- Temporary Flight Restriction
- PowerLines
- Wildfire Daily Fire Perimeter
- Stream/River; Artificial Path
- Stream/River Intermittent
- Lake / Pond
- Lake / Pond (Intermittent)
- Reservoir



NAD 1983 UTM Zone 11N
sdkovach
7/28/2021, 2214 hrs
AirOpsPilot_2021_IDCTS000623_CougarRockComplex_ArcPro_2_7