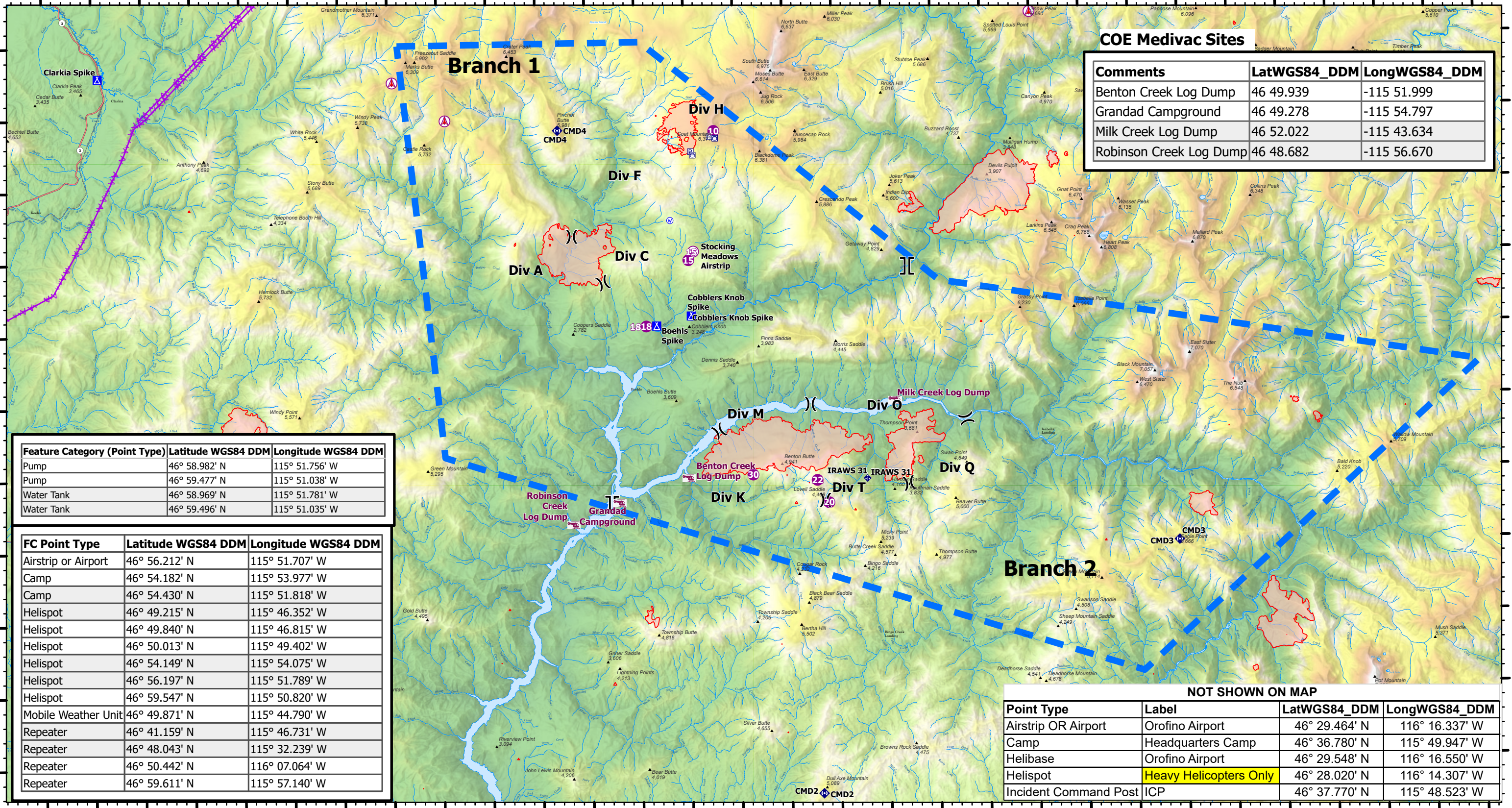


116°16'W 116°12'W 116°8'W 116°4'W 116°W 115°56'W 115°52'W 115°48'W 115°44'W 115°40'W 115°36.01'W 115°32'W 115°28'W 115°24'W 115°20'W

47°N
46°56'N
46°52'N
46°48'N
46°44'N

47°N
46°56'N
46°52'N
46°48'N
46°44'N



COE Medivac Sites		
Comments	LatWGS84_DDM	LongWGS84_DDM
Benton Creek Log Dump	46 49.939	-115 51.999
Granddad Campground	46 49.278	-115 54.797
Milk Creek Log Dump	46 52.022	-115 43.634
Robinson Creek Log Dump	46 48.682	-115 56.670

Feature Category (Point Type)	Latitude WGS84 DDM	Longitude WGS84 DDM
Pump	46° 58.982' N	115° 51.756' W
Pump	46° 59.477' N	115° 51.038' W
Water Tank	46° 58.969' N	115° 51.781' W
Water Tank	46° 59.496' N	115° 51.035' W

FC Point Type	Latitude WGS84 DDM	Longitude WGS84 DDM
Airstrip or Airport	46° 56.212' N	115° 51.707' W
Camp	46° 54.182' N	115° 53.977' W
Camp	46° 54.430' N	115° 51.818' W
Helispot	46° 49.215' N	115° 46.352' W
Helispot	46° 49.840' N	115° 46.815' W
Helispot	46° 50.013' N	115° 49.402' W
Helispot	46° 54.149' N	115° 54.075' W
Helispot	46° 56.197' N	115° 51.789' W
Helispot	46° 59.547' N	115° 50.820' W
Mobile Weather Unit	46° 49.871' N	115° 44.790' W
Repeater	46° 41.159' N	115° 46.731' W
Repeater	46° 48.043' N	115° 32.239' W
Repeater	46° 50.442' N	116° 07.064' W
Repeater	46° 59.611' N	115° 57.140' W

NOT SHOWN ON MAP			
Point Type	Label	LatWGS84_DDM	LongWGS84_DDM
Airstrip OR Airport	Orofino Airport	46° 29.464' N	116° 16.337' W
Camp	Headquarters Camp	46° 36.780' N	115° 49.947' W
Helibase	Orofino Airport	46° 29.548' N	116° 16.550' W
Helispot	Heavy Helicopters Only	46° 28.020' N	116° 14.307' W
Incident Command Post	ICP	46° 37.770' N	115° 48.523' W

Air Operations
Cougar Rock Complex
ID-CTS-000623
8/1/2021
8,079 acres
as of 8/1/2021, 0030 Hrs



- Army Corps of Engineers MEDIVAC
- Airstrip or Airport
- Helispot
- Camp
- Aerial Hazard
- Helispot
- Division Break
- Branch Break
- Camp
- Mobile Weather Unit
- Repeater
- Water Source
- Tower 30' - 200'
- Tower > 200'
- Towers of Unknown Height
- Aerial Hazard
- Temporary Flight Restriction
- PowerLines
- Wildfire Daily Fire Perimeter
- Stream/River
- Stream/River Intermittent
- Lake / Pond
- Lake / Pond (Intermittent)
- Reservoir

